

Installing:

ClientAce

Provides simple-to-use tools for developers wanting to build an OPC client application.

01. Start the installation

On the Products page, click the ClientAce “Install Now” link.

02. ‘Run’ or ‘Save’ the install set.

If an active content warning is displayed, click “Yes” to continue.

03. Saving the Kepware Setup files

The File Download Security Warning dialog box is displayed next. Click “Run” to continue. In addition, if the Internet Explorer Security Warning dialog box is displayed, click “Run” to continue.

04. Installation Welcome

When the Installation Welcome screen is displayed, click “Next” to continue.

05. License Agreement

Read the License Agreement and click “I accept the terms of the license agreement” to accept the terms and continue. Click “I do not accept the terms of the license agreement” if you do not accept the terms and wish to cancel the installation.

06. Choose Destination Folder

The default installation folder is displayed. You may change the default directory now or click the “Next” button to accept the default directory and continue.

07. Select Features

The features to be installed are displayed. Click “Next” to continue.

08. Select Program Folder

By default, the installation creates a Start Menu directory named Kepware Products. The installation also creates a ClientAce sub-directory located under Kepware Products. You may change these directory locations now or click "Next" to accept the default locations and continue.

09. Complete the installation

Click "Install."



10. Finish the setup

Click "Finish."

Licensing / Unlocking:

ClientAce

The following process is required for licensing and unlocking ClientAce.

01. Call Up the 'License ClientAce' Option

From the Windows desktop, select Start / Programs / Kepware Products / ClientAce / License ClientAce.

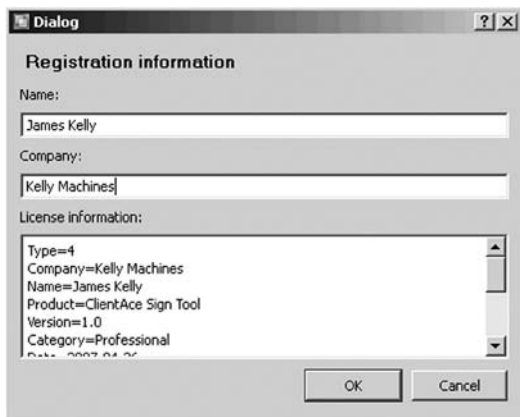
02. Acquire License

The Kepware ClientAce License dialog is displayed. Click the "Acquire License" button in the lower left corner.



03. Enter Registration Information

The Registration Information dialog is displayed. As you complete the Name and Company fields, the License Information field will be populated with the licensing information needed by Kepware Technologies. After filling in the Name and Company fields, click "OK" to continue (see diagram top of next page).



04. Send message to Kepware Technologies.

An email message window from your email client application will be displayed. Click "Send" to send the message to Kepware Technologies.

05. Post the licensing code into the ClientAce Licensing dialog.

Kepware Technologies will send you a reply. The body of the email message from Kepware will include licensing code. Copy the code into the Kepware ClientAce License dialog window, as shown below, then click "Register License."



A confirmation message will be displayed. You have licensed ClientAce and now have the ability to sign the custom client applications that you build with ClientAce.



1-888-KEPWARE
support@kepware.com
400 Congress Street
Portland, Maine 04101



Client Ace Installation Guide



At Keware, we specialize in OPC and device communication technologies for the industrial automation market. Our genuine OPC software products are known worldwide for their quality, reliability and ease of use

- making Keware the best choice for your industrial connectivity needs.