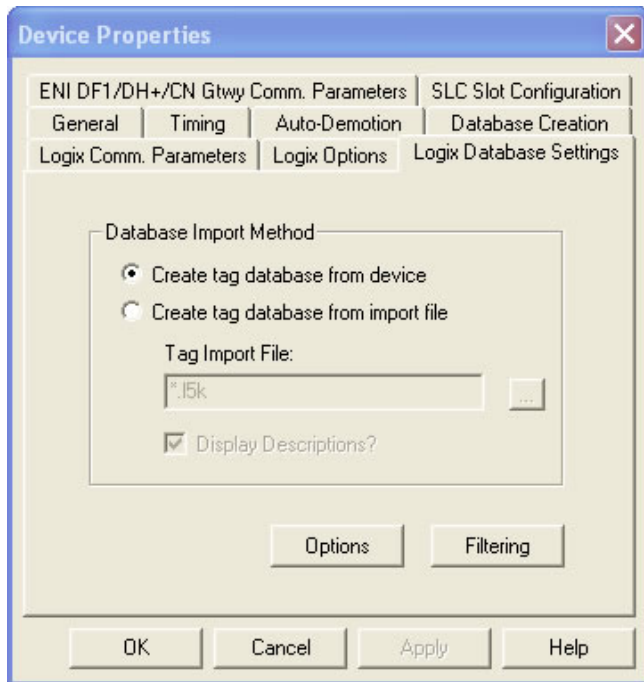




## Tag Database Creation

You can create your KEPServerEX ControlLogix tag database a couple of ways with our ControlLogix driver giving you flexibility and removing the need to manually create each tag during your project creation.



### **From the Device:**

The KEPServerEX ControlLogix driver can retrieve the tags directly from the controller over the same Ethernet connection used for data access. It will import I/O, pre-defined, user-defined, and add-on instruction tags allowing for a fast and comprehensive tag database to be created in your KEPServerEX project. Project download from the device will not import the description of the tags.

### **From L5K Import File:**

The second way to generate tags for your project is to import the RSLogix L5K file. This feature will retrieve the tags directly from an L5K file exported from RSLogix. This feature removes the need to have access to controller and provides the ability to work offline. Using the L5K file you will be able to import tag descriptions, however you will not be able to import I/O tags.

