

Fisher ROC Serial Driver Help

© 2011 Kepware Technologies

Table of Contents

Table of Contents	2
Fisher ROC Serial Driver Help	4
Overview	4
Device Setup	5
Tag Import Settings	5
More Tag Import Settings	6
Address Specification	6
Operator Identification	7
Time Synchronization	8
Data Types Description	9
Automatic Tag Database Generation	10
Address Descriptions	11
ROC Point Types	11
Logical / Point Number Details	14
User Defined Point Types	14
Bit Assignments	14
Error Descriptions	15
Address Validation	15
Address '<address>' is out of range for the specified device or register	15
Data Type '<type>' is not valid for device address '<address>'	16
Device address '<address>' contains a syntax error	16
Device address '<address>' is not supported by model '<model name>'	16
Device address '<address>' is Read Only	16
Missing address	16
Serial Communications	17
Communications error on '<channel name>' [<error mask>]	17
COMn does not exist	17
COMn is in use by another application	17
Error opening COMn	17
Unable to set comm parameters on COMn	18
Device '<device name>' is not responding	18
Device '<device>' responded with error. (Tag '<tag address>')-Details: '<error code>'	18
Failed to obtain data block for PointType = <point type>, Logical Address = <address>, Starting Parameter = <starting parameter>, Ending Parameter <ending parameter> for device '<device>'. Error = <ROC error code>	18
Failed to write data for PointType = '<point type>', Logical Address = '<address>', Parameter = '<parameter>' for device '<device>'. Error = '<error code>'	19
ROC initialization error: Unable to read general configuration	19
ROC initialization error: Unable to retrieve I/O map	19
The username or password supplied was not accepted. Error = 6	19

The username or password supplied was not accepted. Error = 63	20
Write request rejected on Read Only item reference '<channel name>' '<device name>' '<address>'	20
Error importing CSV tag record <record number>: Address '<Address>' is out of range for the specified device or register.	20
Unable to generate a tag database for device '<device>'. Reason: Auto tag generation failed. Device is not responding.	20
Unable to generate a tag database for device '<device>'. Reason: Failed to open recordset.	21
Unable to generate a tag database for device '<device>'. Reason: Input file is corrupt.	21
Unable to generate a tag database for device '<device>'. Reason: Input file not found.	21
Unable to generate a tag database for device '<device>'. Reason: Low memory resources.	21
ROC Error Codes	22
Index	24

Fisher ROC Serial Driver Help

Help version 1.027

CONTENTS

[Overview](#)

What is the Fisher ROC Serial Driver?

[Device Setup](#)

How do I configure a device for use with this driver?

[Data Types Description](#)

What data types does this driver support?

[Automatic Tag Database Generation](#)

How can tags be automatically created for this driver?

[Address Descriptions](#)

How do I address a data location on a Fisher ROC Serial device?

[Error Descriptions](#)

What error messages does the Fisher ROC Serial driver produce?

Overview

The Fisher ROC Serial Driver provides an easy and reliable way to connect Fisher ROC Serial controllers to OPC Client applications, including HMI, SCADA, Historian, MES, ERP and countless custom applications. This driver is intended for use with the following ROC protocol devices: FloBoss 100 Series, 407, 500 Series, the ROC 300 Series ROCPAC, FlashPAC and RegFlo.

Note: Refer to the ROC Protocol User Manual for more information on available Opcodes, Point Types, Parameters and Opcode 255 Error Codes.

Device Setup

Supported Devices

FloBoss 100 Series
FloBoss 407
FloBoss 500 Series
ROC 300 Series-ROCPAC
ROC 300 Series-FlashPAC
RegFlo

Supported Protocol

Remote Operation Controllers (ROC)

Ethernet Encapsulation

This driver supports Ethernet Encapsulation, which allows the driver to communicate with serial devices attached to an Ethernet network using a Serial-to-Ethernet server. Ethernet Encapsulation mode may be enabled through the Communications tab in Channel Properties. For more information, refer to "Ethernet Encapsulation" in the server's help documentation.

Maximum Number of Channels and Devices

The maximum number of supported channels is 100. The maximum number of devices per channel is 255.

Device Setup Dialogs

For more information on the Device Wizard's general dialogs, refer to the OPC server's help documentation. For more information on the specific Fisher ROC Serial driver dialogs, select a link from the list below.

[Tag Import Settings](#)

[More Tag Import Settings](#)

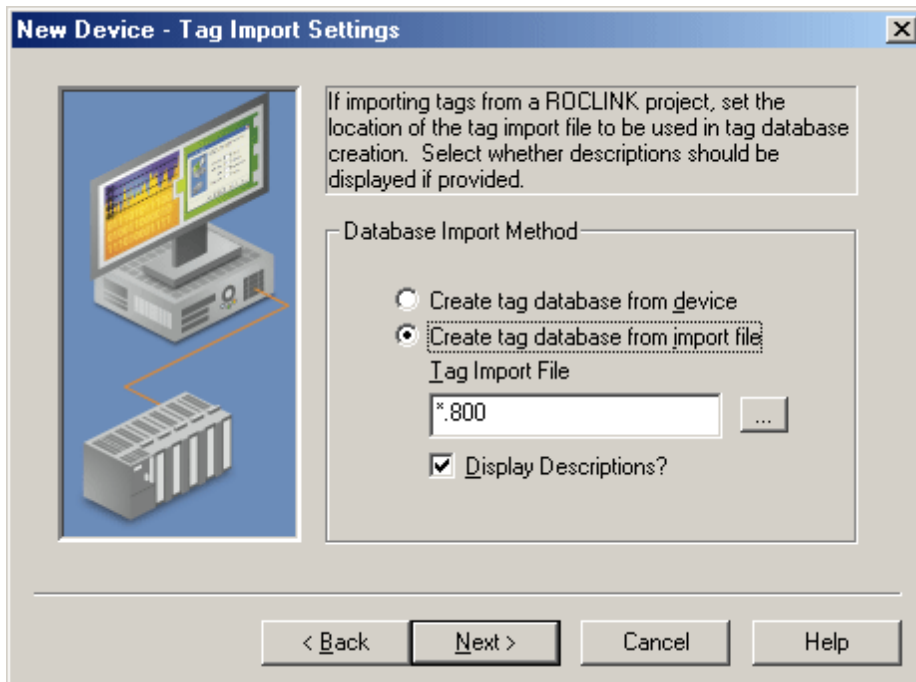
[Address Specification](#)

[Operator Identification](#)

[Time Synchronization](#)

Tag Import Settings

To view or change the Tag Import settings after the device has been added, right-click on the device and then select **Properties** | **Tag Import Settings**.



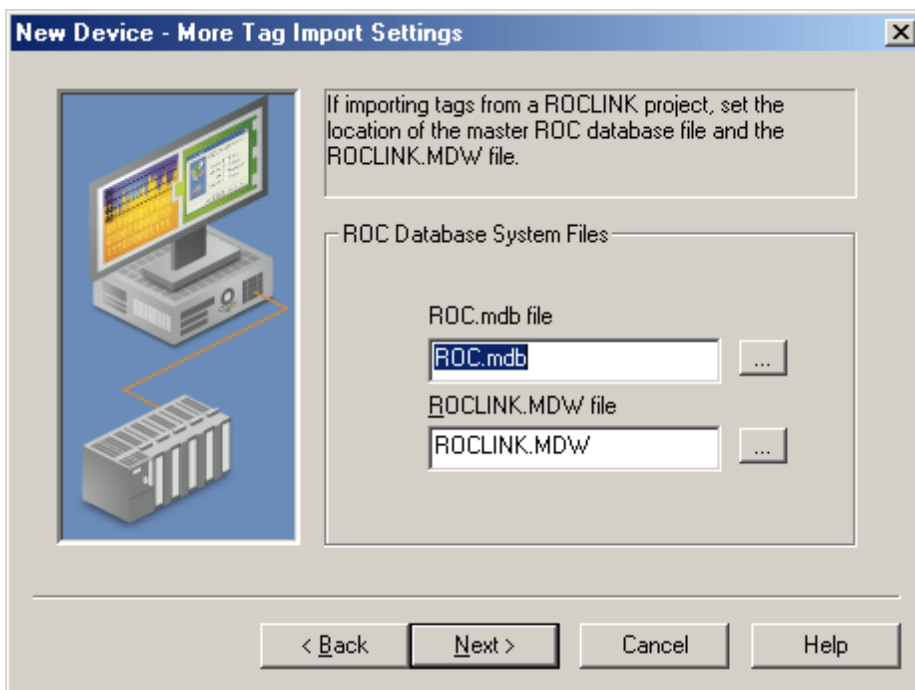
Users have the option to create the OPC tag database automatically, based on either the device's configuration file or the ROCLINK 800 project file. Descriptions of the parameters are as follows:

- **Create tag database from device:** This parameter specifies that the driver will automatically create a set of OPC tags based on the device's configuration file.
- **Create tag database from import file:** This parameter specifies that the driver will automatically create a set of OPC tags based on a project file created in ROCLINK 800. Use the browse button (...) to locate the file (*.800) to be imported.
- **Display Descriptions?:** When checked, this parameter specifies that tags will include descriptions from the ROCLINK 800 master database.

See Also: [More Tag Import Settings](#) and [Automatic Tag Generation](#).

More Tag Import Settings

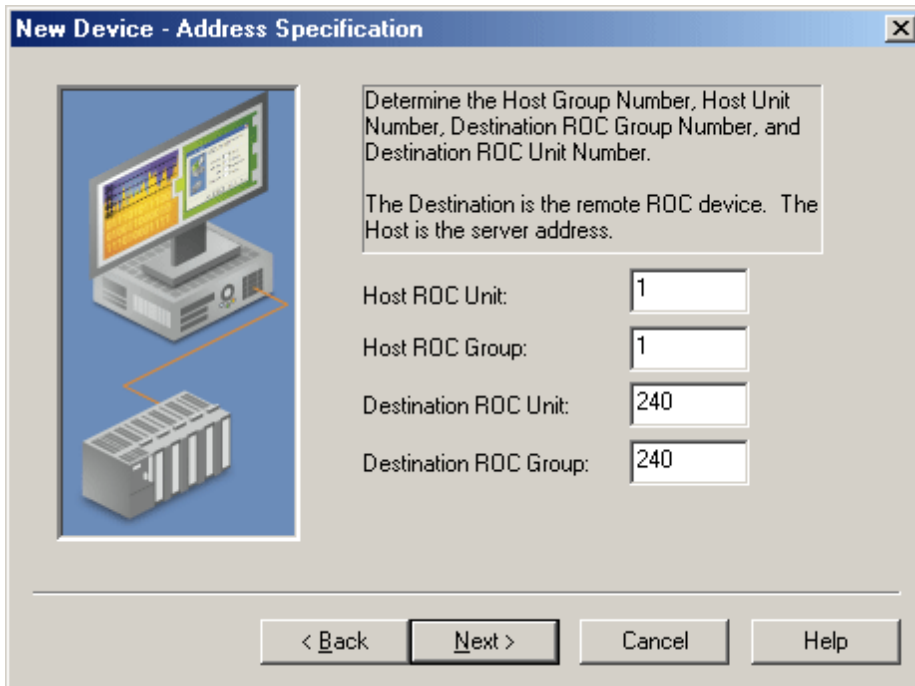
To view or change these settings after the device has been added, right-click on the device and then select **Properties** | **More Tag Import Settings**.



To create a tag database from an import file, use the browse button (...) to locate the ROC.mdb and ROCLINK.MDW files. These files are provided with the ROCLINK 800 application.

Address Specification

To view or change these settings after the device has been added, right-click on the device and then select **Properties** | **Address Specification**.



New Device - Address Specification

Determine the Host Group Number, Host Unit Number, Destination ROC Group Number, and Destination ROC Unit Number.

The Destination is the remote ROC device. The Host is the server address.

Host ROC Unit:

Host ROC Group:

Destination ROC Unit:

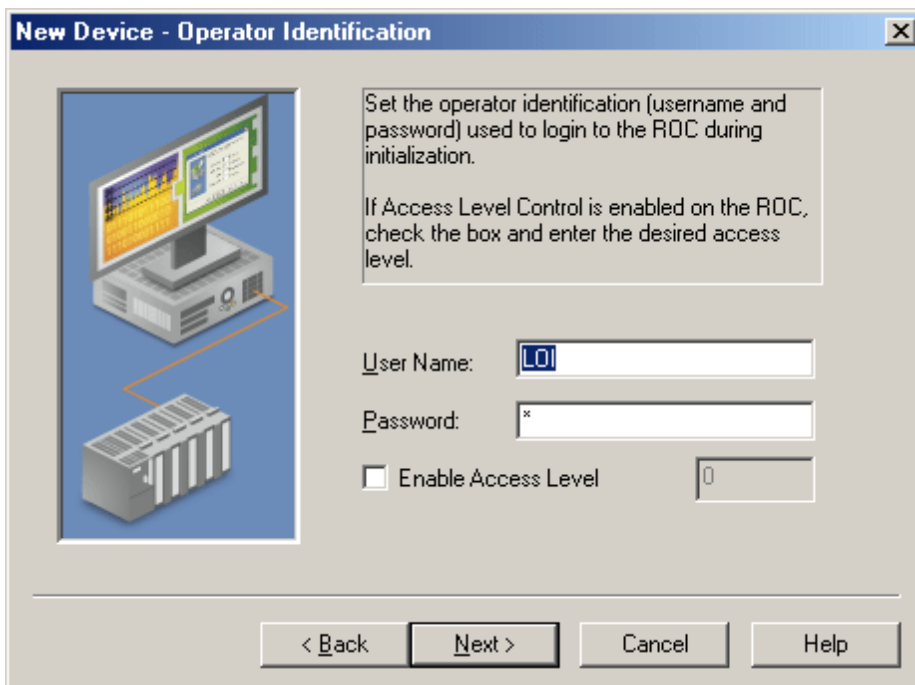
Destination ROC Group:

< Back Next > Cancel Help

Enter the **Host ROC Unit**, **Host ROC Group**, **Destination ROC Unit** and **Destination ROC Group** values. The valid range for these fields is 1 through 255.

Operator Identification

To view or change these settings after the device has been added, right-click on the device and then select **Properties | Operator Identification**.



New Device - Operator Identification

Set the operator identification (username and password) used to login to the ROC during initialization.

If Access Level Control is enabled on the ROC, check the box and enter the desired access level.

User Name:

Password:

Enable Access Level

< Back Next > Cancel Help

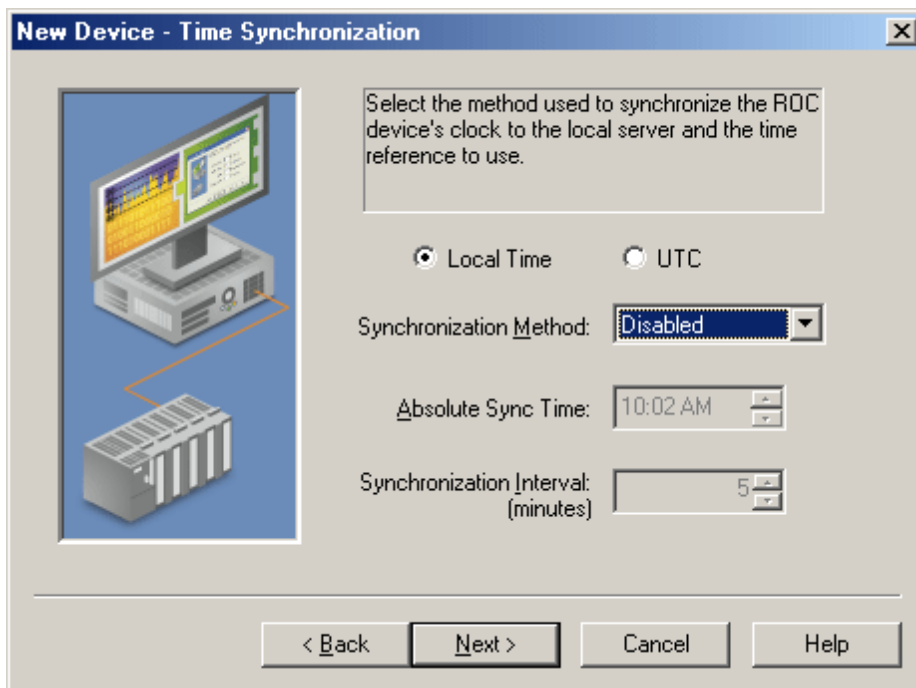
This dialog is used to specify the operator identification User Name and Password, which will be used when logging into the ROC device during initialization. Descriptions of the parameters are as follows:

- **User Name:** This parameter defines the User Name. Enter three characters as set in the device. Three characters are required.

- **Password:** This parameter defines the Operator Password. Enter four numeric characters between 0000 and 9999.
- **Enable Access Level:** When checked, this parameter specifies that the ROC device has defined access levels. Enter the access level (0 to 5).

Time Synchronization

To view or change these settings after the device has been added, right-click on the device and select **Properties** | **Time Synchronization**.



Descriptions of the parameters are as follows:

- **Local Time or UTC:** This parameter specifies Local time (local to the PC on which the OPC server is installed) or Universal time (UTC: Coordinated Universal Time).
- **Synchronization Method:** This parameter specifies the method of synchronization, which adjusts the ROC device clock. There are three methods: Disabled, Absolute or Interval.

When **Disabled** is selected, the driver will not perform time synchronization. When **Absolute** is selected, the driver will perform time synchronization once daily at the time specified in **Absolute Sync Time**. When **Interval** is selected, the driver will perform time synchronization every *x* minutes. The default setting is Disabled.

- **Absolute Sync Time:** This parameter specifies the time at which the driver will perform time synchronization each day.
- **Synchronization Interval:** This parameter specifies the synchronization interval in minutes. The valid range is from 5 to 1440 minutes.

Note: Absolute Synchronization Time is always done in local time.

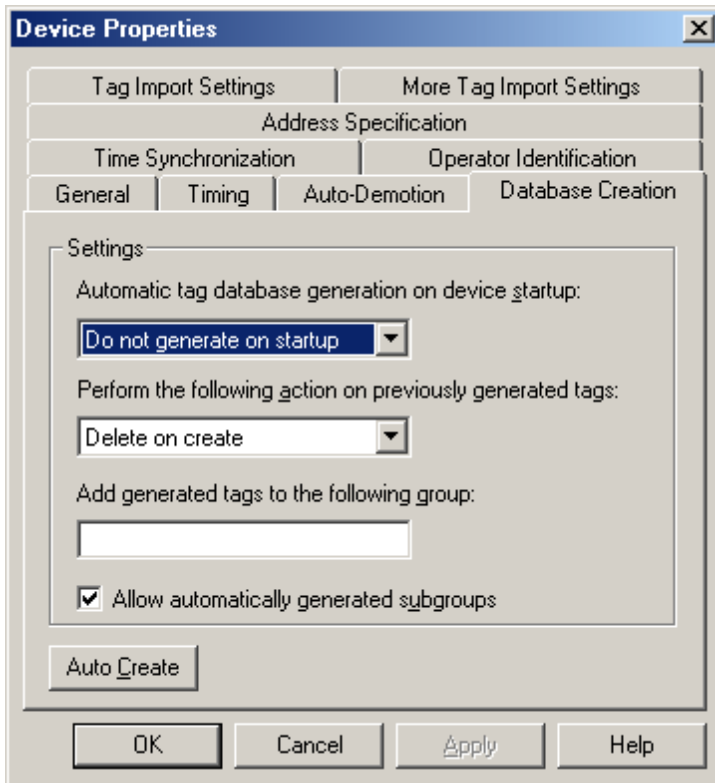
Data Types Description

Data Type	Description
Boolean	Single bit
Char	Signed 8 bit value bit 0 is the low bit bit 6 is the high bit bit 7 is the sign bit
Byte	Unsigned 8 bit value bit 0 is the low bit bit 7 is the high bit
Short	Signed 16 bit value bit 0 is the low bit bit 14 is the high bit bit 15 is the sign bit
Word	Unsigned 16 bit value bit 0 is the low bit bit 15 is the high bit
Long	Signed 32 bit value bit 0 is the low bit bit 30 is the high bit bit 31 is the sign bit
DWord	Unsigned 32 bit value bit 0 is the low bit bit 31 is the high bit
Float	32 bit floating point value bit 0 is the low bit bit 31 is the high bit
TLP	32 bit value Point Type: Logical or Point Number and Parameter Number uses three bytes. The top byte goes unused.
String	String padded with spaces
Date	64 bit floating point value
Date Example	Date format: YYYY-MM-DDTHH:MM:SS.000 2000-01-01T12:30:45.000

Automatic Tag Database Generation

This driver makes use of the OPC server's Automatic Tag Database Generation feature. When enabled, this feature will build a list of OPC tags within the OPC server that correspond to the device's data points. Extra tags may be generated that affect the quality of other generated tags. Automatic Tag Database Generation may be configured through the Database Creation tab in Device Properties.

Note: For more information on specific tabs in Database Creation, click **Help**.



Note: For information on importing tags from a ROCLINK project, refer to [Tag Import Settings](#) and [More Tag Import Settings](#).

Address Descriptions

ROC addresses are divided first by Point Type, then Logical Address and finally Parameter Index within the point type. Some parameters are further broken out into individual bits. The general format is as follows:

T-L.P

where "T" is the Point Type, "L" is the Logical Address and "P" is the Parameter Index.

Parameters that are further broken out into individual bits are addressed as follows:

T-L.P:B

where "B" is the bit offset.

For example, the address 1-50.3:2 indicates the following:

Additional Information

For more information on ROC addressing, select a link from the list below. For a detailed listing of all point type parameters, access, data type, length and description, refer to the ROC device's ROC Protocol User Manual.

[ROC Point Types](#)

[Logical / Point Number Details](#)

[User Defined Point Types](#)

[Bit Assignments](#)

ROC Point Types

The availability of point types varies by model and by how the particular unit is equipped. Points may be Physical I/O or Internal I/O.

Physical I/O Points

Physical I/O points are one of Discrete Inputs (type 1), Discrete Outputs (type 2), Analog Inputs (type 3), Analog Outputs (type 4) and Pulse Inputs (type 5). The logical address for physical I/O points is based on their position in the unit, known as **Rack** and **Slot**. There are 4 racks (A-D) of 16 slots each. A fifth Rack E provides 6 slots dedicated to System and Diagnostic points. The I/O field is not typically fully populated.

Logical addresses are calculated from Rack A, Slot 0 (0). For example, Rack B, Slot 0 = 16, C0 = 32 and D0 = 48. In this fashion, a Discrete Input in Rack B, Slot 3 would be logical address 19.

Note: Rack and Slot are ROC nomenclature; however, many ROC devices have no physical racks or slots.

Internal I/O Points

Internal I/O points consist of PID settings, system flags, communications parameters and other internal information. The internal I/O logical address begins at 0 for each point type. A ROC unit may have one or several of a given internal point type. Each point type has a specific set of parameters. ROC drivers have no array types.

Point Type Tables

[ROC Point Types for ROC300-Series](#)

[ROC Point Types for FloBoss 100-Series, FloBoss 407 and FloBoss 500-Series](#)

[ROC Point Types for RegFlo](#)

ROC Point Types for ROC300-Series

For a detailed listing of all point type parameters' access, data type, length and description, refer to the device's ROC Protocol User Manual.

Point Types	Description	ROC300-Series FlashPAC	ROC300-Series ROCPAC
0	Configurable Opcode	Yes	Yes
1	Discrete Inputs (DI)	Yes	Yes
2	Discrete Outputs (DO)	Yes	Yes
3	Analog Inputs (AI)	Yes	Yes
4	Analog Outputs (AO)	Yes	Yes

5	Pulse Inputs (PI)	Yes	Yes
6	Proportional, Integral and Derivative (PID) Control	Yes	Yes
7	American Gas Association (AGA) Flow Parameters	Yes	Yes
9	Local Display Panel	Yes	Yes
10	AGA Flow Values	Yes	Yes
11	Tank Parameters	No	Yes
12	ROC Clock	Yes	Yes
13 ROC Poi	System Flags	Yes	Yes
14	Communication Ports	Yes	Yes
15	System Variables (ROC Information)	Yes	Yes
16	Function Sequence Table (FST) Parameters	Yes	Yes
17	Soft Points	Yes	Yes
18	AI Calibration	No	Yes
19	Database Setup	Yes	Yes
20	ROC Tasks	Yes	Yes
21	Information for User Defined Points	Yes	Yes
22 31	User Defined Points	Yes	Yes
32	User Defined Typically Modem Config for COM1	Yes	Yes
33	User Defined Typically Modem Config for LOI and COM2	Yes	Yes
34	User Defined Typically Modbus Config for COM1	Yes	Yes

ROC Point Types for ROC300-Series (cont.)

Point Types	Description	ROC300-Series FlashPAC	ROC300-Series ROCPAC
35	User Defined Typically Function Config for COM1	Yes	Yes
36	User Defined Typically Host Config for COM1	Yes	Yes
37	User Defined Typically Modbus Config for LOI and COM2	Yes	Yes
38	User Defined Typically Function Config for LOI and COM2	Yes	Yes
39	User Defined Typically Host Config for COM1	Yes	Yes
40	Multi-Variable Sensor (MVS) Parameters	Yes*	No
41	AGA Run Parameters	Yes	No
42	Extra Run Parameters	Yes	No
44	Power Control	Yes	No
49	Upload to Disk	Yes	Yes
50	Download to ROC	Yes	Yes
56	AI Calibration	Yes	No
57	Keypad / Logon Security Parameters	Yes	No
59	Program Flash Control Parameters	Yes	No

*Added via a user program.

ROC Point Types for FloBoss 100-Series, FloBoss 407 and FloBoss 500-Series

Point Types	Description	FloBoss 100- Series	FloBoss 407- Series	FloBoss 500- Series
0	Configurable Opcode	Yes	Yes	Yes
1	Discrete Inputs	Yes	Yes	Yes
2	Discrete Outputs	Yes	Yes	Yes
3	Analog Inputs	Yes	Yes	Yes
4	Analog Outputs	Yes	Yes	Yes
5	Pulse Inputs	Yes	Yes	Yes
6	PID Control*	Yes	Yes	Yes
7	AGA Flow Parameters*	Yes	Yes	Yes
8	History Parameters	Yes	No	Yes
10	AGA Flow Values*	Yes	Yes	Yes
12	ROC Clock	Yes	Yes	Yes
13	System Flags	Yes	Yes	Yes

14	Communication Ports	Yes	Yes	Yes
15	System Variables (ROC Information)	Yes	Yes	Yes
16	FST Parameters	Yes	Yes	Yes
17	Soft Points	Yes	Yes	Yes
19	Database Setup	Yes	Yes	Yes
20	ROC Tasks	No	Yes	No
21	Information for User Defined Points	Yes	Yes	No
22–31	User Defined Points	Yes	Yes	No
32	User Defined – Typically Modem Config for COM1	Yes	Yes	No
33	User Defined – Typically Modem Config for LOI and COM2	Yes	Yes	No

*FloBoss 100-Series and FloBoss 500-Series Backward Compatibility.

ROC Point Types for FloBoss 100-Series, FloBoss 407 and FloBoss 500-Series (cont.)

Point Types	Description	FloBoss 100-Series	FloBoss 407	FloBoss 500-Series
34	User Defined – Typically Modbus Config for COM1	Yes	Yes	No
35	User Defined – Typically Function Config for COM1	Yes	Yes	No
36	User Defined – Typically Host Config for COM1	Yes	Yes	No
37	User Defined – Typically Modbus Config for LOI and COM2	Yes	Yes	No
38	User Defined: Typically Function Config for LOI and COM2	Yes	Yes	No
39	User Defined – Typically Host Config for COM1	Yes	Yes	No
40	Multi-Variable Sensor (MVS) Parameters		Yes	No
41	AGA Run Parameters*	Yes	Yes	Yes
42	Extra Run Parameters*	Yes	Yes	Yes
43	User Lists	Yes	Yes	Yes
44	Power Control	Yes	Yes	Yes
45	Meter Calibration and Sampler	Yes	No	Yes
46	Meter Configuration Parameters	Yes	No	Yes
47	Meter Flow Values	Yes	No	Yes
48	PID Control Parameters	Yes	No	Yes
49	Upload to Disk	Yes	Yes	Yes
50	Download to ROC	Yes	Yes	Yes
52	Battery Parameters	No	No	Yes
53	Modbus Configuration Parameters	Yes	No	Yes
54	Modbus Function Tables	Yes	No	Yes
55	Modbus Special Function Table	Yes	No	Yes
56	AI Calibration	Yes	Yes	Yes
57	Keypad / Logon Security Parameters	Yes	Yes	Yes
58	Revision Information	Yes	No	Yes
59	Program Flash Control Parameters	Yes	Yes	Yes
86	Extended History Parameters	Yes	No	No

*FloBoss 100-Series and FloBoss 500-Series Backward Compatibility.

ROC Point Types for RegFlo

Point Types	Description	Point Types	Description
0	Configurable Opcode	17	Soft Points.
1	Discrete Inputs	19	Database Setup.
2	Discrete Outputs	56	AI Calibration.
3	Analog Inputs	57	Keypad / Logon Parameters.
4	Analog Outputs	80	Regulator Parameters.
8	History Parameters	81	Logic Alarm Parameters.

13	System Flags	84	User Discrete Values.
14	Communication Ports	86	Extended History Parameters.
15	System Variables	NA.	NA.

Logical / Point Number Details

Within each point type, individual points are referenced by a Point Number or a Logical Number. The point numbers used by ROC protocol for point types 1 to 5 are based on a physical input or output (I/O) with a rack and module location. The point numbers for all other point types are logical and are simply numbered in sequence.

Physical Point Numbers 0 to 69

For point types 1 through 5, there are point numbers for the field I/O and for the diagnostic inputs. They are as follows:

- Point Numbers 0 to 63 are assigned to field I/O (built-in or modular, 64 maximum). For example, if there were ten I/O modules in a ROC364, they would be points 0 through 9. The ROC I/O point database would reference these points by rack and module location, such as A1 through A10.
- Point Numbers 64 to 69 are assigned to the diagnostic (system) I/O. For example, the five diagnostic points in a ROC364 would be 64 through 68. The ROC I/O point database would reference these points by rack and module; namely, E1 to E5.

Logical Point Numbers 0 to 127

For all other point types (0 and 6–59), the point number is 0 to x , where x is one less than the total number of points that exist for that point type. For example, the four MVS points in a FloBoss 407 would be logical numbers 0 through 3.

Note: All parameters are 0-based for each point type.

User Defined Point Types

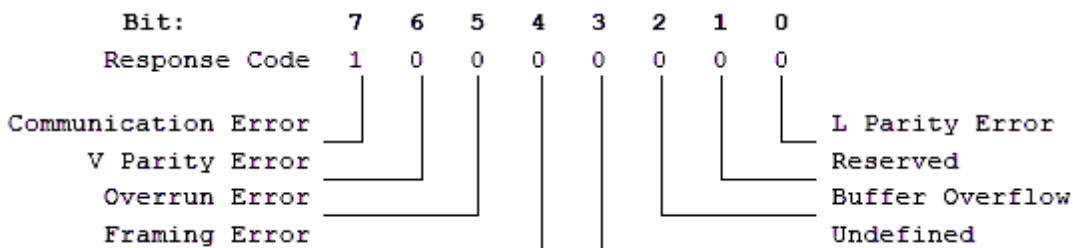
User Defined Point (UDP) Types are available in the ROC and FloBoss units. UDPs are used to make user program data available to ROCLINK, typically for configuration purposes.

- The Modbus program for the COM1 port reserves UDP 32, UDP 34, UDP 35 and UDP 36 for configuration data.
- The Modbus COM1 program for the FloBoss 100-series, FloBoss 500-series and RegFlo reserves UDP 53, UDP 54 and UDP 55 for configuration data.
- The Modbus program for COM2 and the Local Operator Interface (LOI) port reserves UDP 33, UDP 37, UDP 38 and UDP 39 for configuration data.

Note: The Modbus COM1 program is built into Firmware.

Bit Assignments

The graphic below shows a sample bit assignment. The bits in each byte are numbered 0 to 7, right to left, with Bit 7 shown the furthest to the left. A 1 in any bit indicates that it is active or enabled.



Error Descriptions

The following error/warning messages may be generated. The messages are listed here in alphabetical order.

Address Validation

[Address '<address>' is out of range for the specified device or register](#)
[Data Type '<type>' is not valid for device address '<address>'](#)
[Device address '<address>' contains a syntax error](#)
[Device address '<address>' is not supported by model '<model name>'](#)
[Device address '<address>' is Read Only](#)
[Missing address](#)

Serial Communications

[Communications error on '<channel name>' \[<error mask>\]](#)
[COMn does not exist](#)
[COMn is in use by another application](#)
[Error opening COMn](#)
[Unable to set comm parameters on COMn](#)

Device Status Messages

[Device '<device name>' is not responding](#)

Device Specific Messages

[Device '<device>' responded with error. \(Tag '<tag address>'\)-Details: '<error code>'](#)
[Failed to obtain data block for PointType = <point type>, Logical Address = <address>, Starting Parameter = <starting parameter>, Ending Parameter <ending parameter> for device '<device>'. Error = <ROC error code>](#)
[Failed to write data for PointType = '<point type>', Logical Address = '<address>', Parameter = '<parameter>' for device '<device>'. Error = '<error code>'](#)
[ROC initialization error: Unable to read general configuration](#)
[ROC initialization error: Unable to retrieve I/O map](#)
[The username or password supplied was not accepted. Error = 6](#)
[The username or password supplied was not accepted. Error = 63](#)
[Write request rejected on Read Only item reference '<channel name>' '<device name>' '<address>'](#)

Automatic Tag Database Generation Error Messages

[Error importing CSV tag record <record number>: Address '<Address>' is out of range for the specified device or register](#)
[Unable to generate a tag database for device '<device>'. Reason: Auto tag generation failed: device is not responding](#)
[Unable to generate a tag database for device '<device>'. Reason: Failed to open recordset](#)
[Unable to generate a tag database for device '<device>'. Reason: Input file is corrupt](#)
[Unable to generate a tag database for device '<device>'. Reason: Input file not found](#)
[Unable to generate a tag database for device '<device>'. Reason: Low memory resources](#)

See Also: [ROC Error Codes](#)

Address Validation

The following error/warning messages may be generated. The messages are listed here in alphabetical order.

Address Validation

[Address '<address>' is out of range for the specified device or register](#)
[Data Type '<type>' is not valid for device address '<address>'](#)
[Device address '<address>' contains a syntax error](#)
[Device address '<address>' is not supported by model '<model name>'](#)
[Device address '<address>' is Read Only](#)
[Missing address](#)

Address '<address>' is out of range for the specified device or register

Error Type:

Warning

Possible Cause:

A tag address that has been specified statically references a location that is beyond the range of supported locations for the device.

Solution:

Verify that the address is correct; if it is not, re-enter it in the client application.

Data Type '<type>' is not valid for device address '<address>'

Error Type:

Warning

Possible Cause:

A tag address that has been specified statically has been assigned an invalid data type.

Solution:

Modify the requested data type in the client application.

Device address '<address>' contains a syntax error

Error Type:

Warning

Possible Cause:

A tag address that has been specified statically contains one or more invalid characters.

Solution:

Re-enter the address in the client application.

Device address '<address>' is not supported by model '<model name>'

Error Type:

Warning

Possible Cause:

A tag address that has been specified statically references a location that is valid for the communications protocol but not supported by the target device.

Solution

1. Verify that the address is correct; if it is not, re-enter it in the client application.
2. Verify that the selected model name for the device is correct.

Device address '<address>' is Read Only

Error Type:

Warning

Possible Cause:

A tag address that has been specified statically has a requested access mode that is not compatible with what the device supports for that address.

Solution:

Change the access mode in the server application.

Missing address

Error Type:

Warning

Possible Cause:

A tag address that has been specified statically has no length.

Solution:

Re-enter the address in the server application.

Serial Communications

The following error/warning messages may be generated. The messages are listed here in alphabetical order.

Serial Communications

[Communications error on '<channel name>' \[<error mask>\]](#)

[COMn does not exist](#)

[COMn is in use by another application](#)

[Error opening COMn](#)

[Unable to set comm parameters on COMn](#)

Communications error on '<channel name>' [<error mask>]

Error Type:

Serious

Error Mask Definitions:

B = Hardware break detected.

F = Framing error.

E = I/O error.

O = Character buffer overrun.

R = RX buffer overrun.

P = Received byte parity error.

T = TX buffer full.

Possible Cause:

1. The serial connection between the device and the Host PC is bad.
2. The communication parameters for the serial connection are incorrect.

Solution:

1. Verify the cabling between the PC and the device.
2. Verify that the specified communication parameters match those of the device.

COMn does not exist

Error Type:

Fatal

Possible Cause:

The specified COM port is not present on the target computer.

Solution:

Verify that the proper COM port has been selected in the Channel Properties.

COMn is in use by another application

Error Type:

Fatal

Possible Cause:

The serial port assigned to a device is being used by another application.

Solution:

Verify that the correct port has been assigned to the channel.

Error opening COMn

Error Type:

Fatal

Possible Cause:

The specified COM port could not be opened due to an internal hardware or software problem on the target computer.

Solution:

Verify that the COM port is functional and may be accessed by other Windows applications.

Unable to set comm parameters on COMn

Error Type:

Fatal

Possible Cause:

The serial parameters for the specified COM port are not valid.

Solution:

Verify the serial parameters and make any necessary changes.

Device '<device name>' is not responding

Error Type:

Serious

Possible Cause:

1. The connection between the device and the Host PC is intermittent.
2. The communication parameters for the serial connection are incorrect.

Solution:

1. Verify the cabling between the PC and the device.
2. Verify that the specified communication parameters match those of the device.

Device '<device>' responded with error. (Tag '<tag address>')-Details: '<error code>'

Error Type:

Serious

Possible Cause:

1. The connection between the device and the Host PC is intermittent.
2. The communication parameters for the serial connection are incorrect.
3. Value written is out of range or write was performed while in an incorrect setup area.

Solution:

1. Check the cabling between the PC and the device.
2. Verify that the specified communication parameters match those of the device.

See Also:

[Device Setup](#)

Failed to obtain data block for PointType = <point type>, Logical Address = <address>, Starting Parameter = <starting parameter>, Ending Parameter <ending parameter> for device '<device>'. Error = <ROC error code>

Error Type:

Serious

Possible Cause:

1. Invalid tag address for point in block.
2. Device not responding.

Solution:

1. Verify the cabling between the PC and the device.
2. Confirm that all tags within this block exist on the device.

See Also:

[ROC Error Codes](#)

Failed to write data for PointType = '<point type>', Logical Address = '<address>', Parameter = '<parameter>' for device '<device>'. Error = '<error code>'

Error Type:

Serious

Possible Cause

1. The address is incorrect.
2. The unit does not support the particular address point.
3. The privileges for the logged-in user do not permit this operation.

Solution:

1. Consult the ROC error code reference for further information regarding <error code>.
2. Correct the address.
3. Confirm that the address is supported by the controller in use.
4. Supply an operator identification with sufficient privileges.

See Also:

[ROC Error Codes](#)

ROC initialization error: Unable to read general configuration

Error Type:

Fatal

Possible Cause:

The driver may not be receiving a response from the device.

Solution:

1. Make sure the device is physically connected and powered on.
2. Check that the COM port is working and configured properly at the channel level (in the OPC server).
3. Check the device-level Operator Identification and Address Specification settings and verify that they are correct.

See Also:

[Operator Identification](#)
[Address Specification](#)

ROC initialization error: Unable to retrieve I/O map

Error Type:

Fatal

Possible Cause:

Access to the I/O Map has been restricted for the current user.

Solution:

Check the Operator Identification settings (such as, username, password, access level) and verify that they are correct.

See Also:

[Operator Identification](#)

The username or password supplied was not accepted. Error = 6

Error Type:

Fatal

Possible Cause:

An access level has been enabled on the device but not in the driver.

Solution:

Check the Operator Identification settings and make sure the Enable Access Level checkbox is checked.

See Also:

[Operator Identification](#)

The username or password supplied was not accepted. Error = 63

Error Type:

Fatal

Possible Cause:

The access level that has been enabled on the device is lower than the operator's access level.

Solution:

Check the Operator Identification settings and make sure the operator's access level is less than or equal to the access level enabled in the device.

See Also:

[Operator Identification](#)

Write request rejected on Read Only item reference '<channel name>' '<device name>' '<address>'

Error Type:

Warning

Possible Cause:

The driver was attempting to write to a Read Only datum in the ROC controller.

Solution:

1. Do not attempt to write to Read Only points.
2. In some situations, the Automatic Tag Generation process will identify Read Only datum as Read/Write, based on the configuration that the driver retrieved from the ROC controller and the ROC specification. Nonetheless, the ROC controller itself is the final authority on whether a datum is writable. Consult the controller's documentation for further information.

Error importing CSV tag record <record number>: Address '<Address>' is out of range for the specified device or register

Error Type:

Warning

Possible Cause:

An imported tag address specifies a location that is beyond the range of supported locations for the device.

Solution:

Verify that the address is correct; if it is not, re-enter it in the file being imported.

Unable to generate a tag database for device '<device>'. Reason: Auto tag generation failed. Device is not responding

Error Type:

Serious

Possible Cause:

1. The connection between the device and the Host PC is intermittent.
2. The communication parameters for the serial connection are incorrect.

Solution:

1. Verify the cabling between the PC and the device.
2. Verify that the specified communication parameters match those of the device.

Unable to generate a tag database for device '<device>'. Reason: Failed to open recordset

Error Type:

Warning

Possible Cause:

1. The project file is corrupt or does not exist.
2. Locations for the ROC.MDB and/or ROCLINK.MDW files have been specified incorrectly.

Solution:

In the OPC server project, right-click on the device and then select Properties. Click on the Tag Import Settings and More Tag Import Settings tabs and then check the name of the project file that will be imported.

See Also:[Tag Import Settings](#)[More Tag Import Settings](#)[Automatic Tag Database Generation](#)

Unable to generate a tag database for device '<device>'. Reason: Input file is corrupt

Error Type:

Warning

Possible Cause:

The Automatic Tag Generation import file is corrupt.

Solution:

In the OPC server project, right-click on the device and select Properties from the context menu. In Device Properties, click on the Tag Import Settings and More Tag Import Settings tabs. Review the settings and check the import file. If necessary, re-export the project file from within ROCLINK800.

See Also:[Tag Import Settings](#)[More Tag Import Settings](#)[Automatic Tag Database Generation](#)

Unable to generate a tag database for device '<device>'. Reason: Input file not found

Error Type:

Warning

Possible Cause:

The Automatic Tag Generation import file cannot be found.

Solution:

In the OPC server project, right-click on the device and select Properties from the context menu. In Device Properties, click on the Tag Import Settings and More Tag Import Settings tabs and check the name of the project file that will be imported.

See Also:[Tag Import Settings](#)[More Tag Import Settings](#)[Automatic Tag Database Generation](#)

Unable to generate a tag database for device '<device>'. Reason: Low memory resources.

Error Type:

Warning

Possible Cause:

The memory required for Automatic Tag Generation could not be allocated. The process is aborted.

Solution:

Close unused applications and/or increase the amount of virtual memory and try again.

ROC Error Codes**Error Codes Returned by Opcode 255**

Opcode 255 is an error message indicator that returns an error code.

FlashPACs, FloBoss 500-Series, FloBoss 100-Series and RegFlo Models

Error Code	Description
1	Invalid Opcode request.
2	Invalid Parameter Number.
3	Invalid Logical Number / Point Number.
4	Invalid Point Type.
5	Received too many data bytes.
6	Received too few data bytes.
7	Did not receive 1 data byte.
8	Did not receive 2 data byte.
9	Did not receive 3 data byte.
10	Did not receive 4 data byte.
11	Did not receive 5 data byte.
12	Did not receive 16 data byte.
13	Outside valid address range.
14	Invalid history request.
15	Invalid FST request.
16	Invalid event entry.
17	Requested too many alarms.
18	Requested too many events.
19	Write to read only parameter.
20	Security error.
21	Invalid security logon.
22	Invalid store and forward path.
23	Flash programming error.
24	History configuration in progress.
63	Requested security level too high.
65535	Device not responding.

ROCPACs and FloBoss 407 Models**Read Errors**

Error Code	Description
8	More than 250 data bytes in response.
9	Invalid parameter.
90	One of the following conditions occurred: 1. Did not receive 4 data bytes. 2. Invalid Point Type.
91	Point does not exist.
92	Point does not exist.
93	Invalid range of parameters asked for.
94	Too many data bytes to send (more than 240).

Write Errors

Error Code	Description
------------	-------------

103	Received less than 4 data bytes.
104	Point type out of range (1-24 are valid).
105	Point does not exist, or invalid parameter.
106	Not enough data bytes received.
65535	Device not responding.

Index

A

Address '<address>' is out of range for the specified device or register.....	15
Address Descriptions.....	11
Address Specification.....	6
Address Validation.....	15
Automatic Tag Database Generation.....	10

B

Bit Assignments.....	14
----------------------	----

C

Communications error on '<channel name>' [<error mask>].....	17
COMn does not exist.....	17
COMn is in use by another application.....	17

D

Data Type '<type>' is not valid for device address '<address>'.....	16
Data Types Description.....	9
Device '<device>' responded with error. (Tag '<tag address>') - Details: '<error code>'.....	18
Device address '<address>' contains a syntax error.....	16
Device address '<address>' is not supported by model '<model name>'.....	16
Device address '<address>' is Read Only.....	16
Device name '<device name>' is not responding.....	18
Device Setup.....	5

E

Error Descriptions.....	15
Error importing CSV tag record <record number>: Address '<Address>' is out of range for the specified device or register.....	20
Error opening COMn.....	17

F

Failed to obtain data block for PointType = <point type>, Logical Address = <address>, Starting Parameter = <starting parameter>, Ending Parameter <ending parameter> for device '<device>'. Error = <ROC error code>.....	18
Failed to write data for PointType = '<point type>', Logical Address = '<address>', Parameter = '<parameter>' for device '<device>'. Error = '<error code>'.....	19

H

Help Contents.....	4
--------------------	---

M

Missing address	16
More Tag Import Settings	6

O

Operator Identification	7
Overview	4

P

Point Number Details	14
----------------------------	----

R

ROC Error Codes	22
ROC initialization error: Unable to read general configuration	19
ROC initialization error: Unable to retrieve I/O map	19
ROC Point Types	11

S

Serial Communications	17
-----------------------------	----

T

Tag Import Settings	5
The username or password supplied was not accepted. Error = 6	19
The username or password supplied was not accepted. Error = 63	20
Time Synchronization	8

U

Unable to generate a tag database for device '<device>'. Reason: Auto tag generation failed. 20 Device is not responding	20
Unable to generate a tag database for device '<device>'. Reason: Failed to open recordset ..	21
Unable to generate a tag database for device '<device>'. Reason: Input file is corrupt	21
Unable to generate a tag database for device '<device>'. Reason: Input file not found	21
Unable to generate a tag database for device '<device>'. Reason: Low memory resources....	21
Unable to set comm parameters on COMn	18
User Defined Point Types	14

W

Write request rejected on Read Only item reference '<channel name>' '<device name>' '<address>'	20
--	----