



# CONTROL Device Master Quick Guide

V4.0

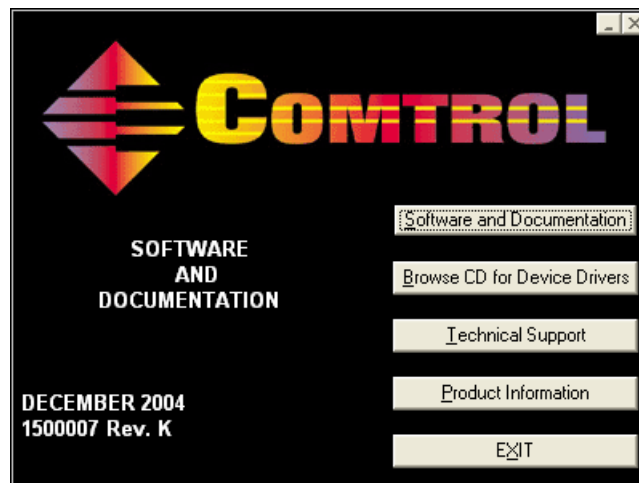
12/02/04 Document v1.01

## Overview

The purpose of this document is to guide you in configuring your Control DeviceMaster for use with KepserverEx. There are several ways to do this and all are described in the DeviceMaster Users Manual that is provided on the CD that ships with it. This document shows you the method that we think is the easiest and quickest one to use. This method is using the Control PortVision Utility.

## Installing PortVision

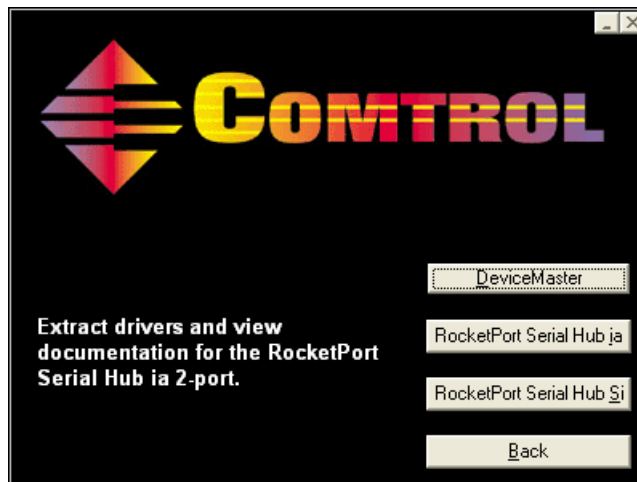
1. Place the Control Software and Documentation CD in your PC. If you have disabled Autorun on your PC you will have to manually start it by click on Startup.bat in the Root folder of the CD.
2. In the Startup dialog click on the Software and Documentation button



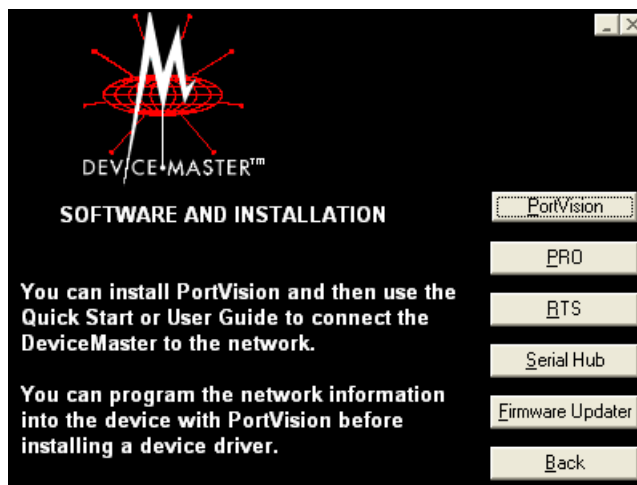
3. In the Software and Documentation dialog click on the Network Devices button.



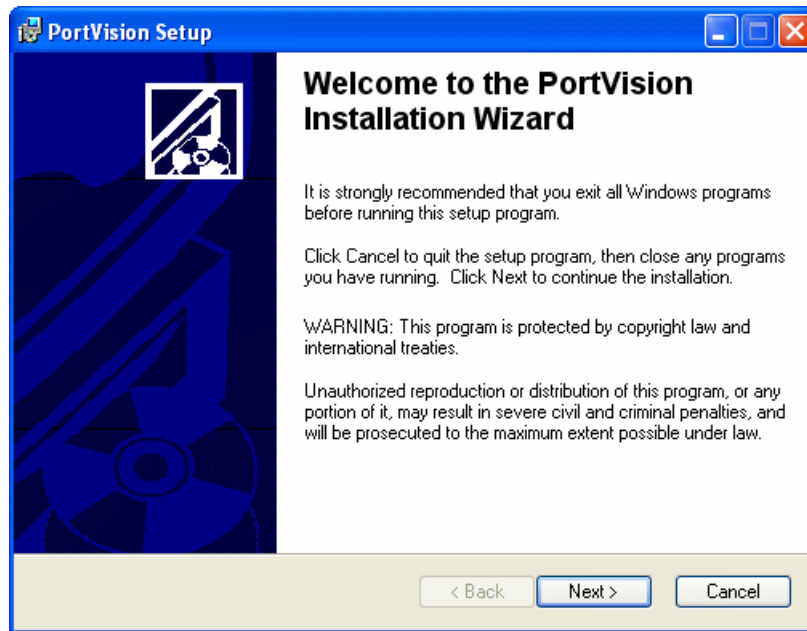
4. In the Network Devices dialog click the DeviceMaster button.



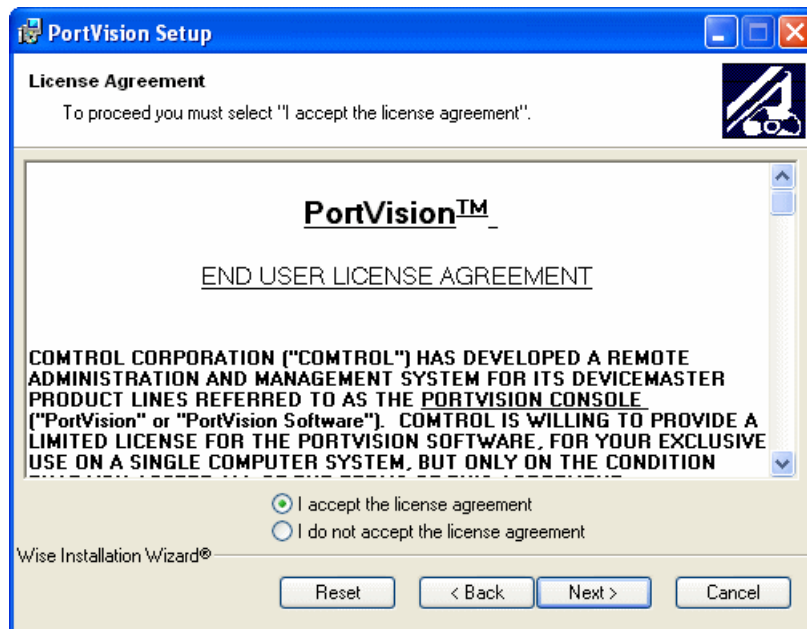
5. In the DeviceMaster dialog click the PortVision button to start installing the PortVision software utility.



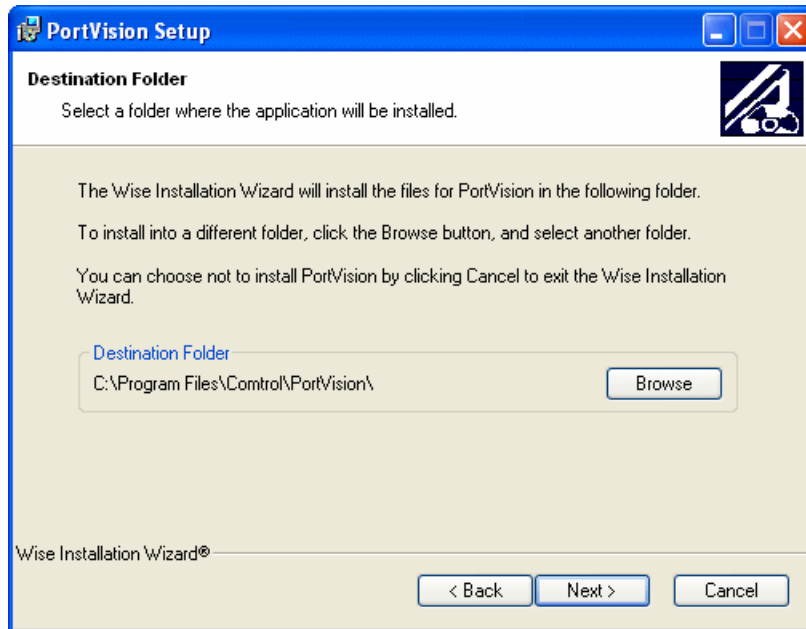
6. In the PortVision Setup wizard Start Page click the Next button to start the install process.



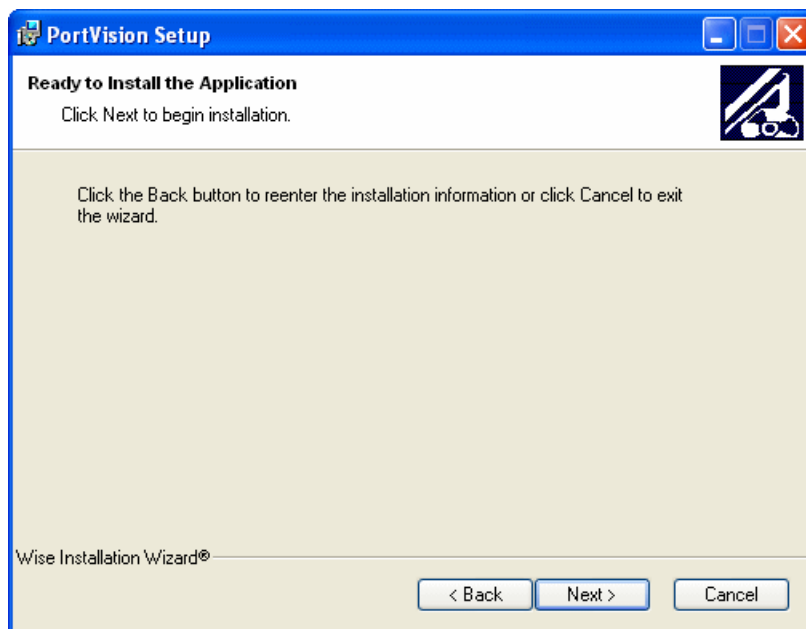
7. In the License Agreement Page read the PortVision License Agreement and if you accept the conditions click the "I Accept..." radio button and then click Next to continue. If you do not agree with the conditions of the agreement then cancel the install process.



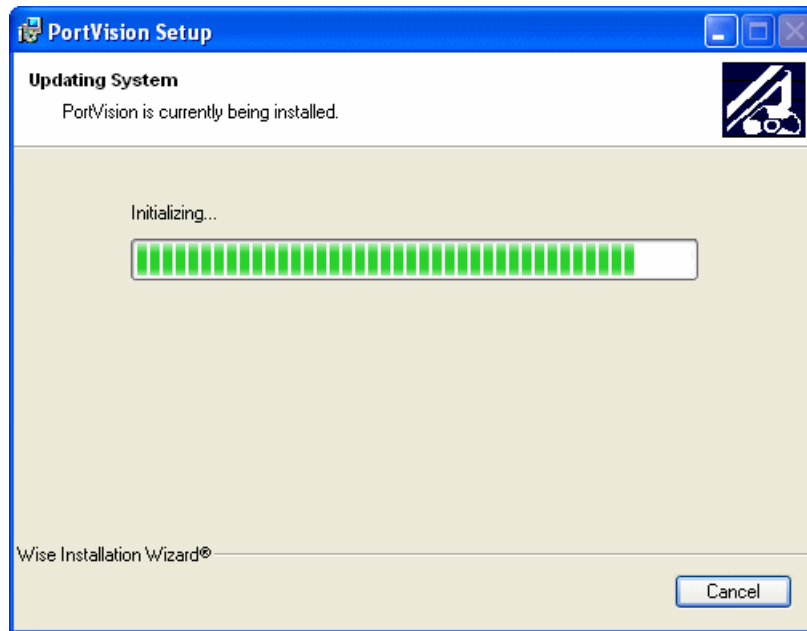
8. In the Destination Folder Page click the Next button of the target install directory is fine. If you would like to install to a different folder then click the browse button to assign a new install location then click the Next button to continue.



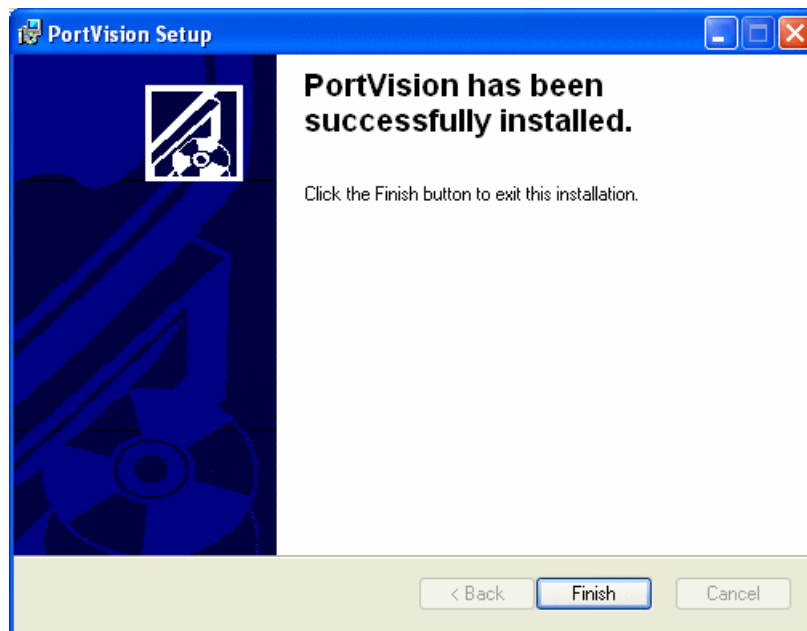
9. In the Ready to Install Page click the Next button to install PortVision.



10. You should see a status window indicating the status of the installation process.



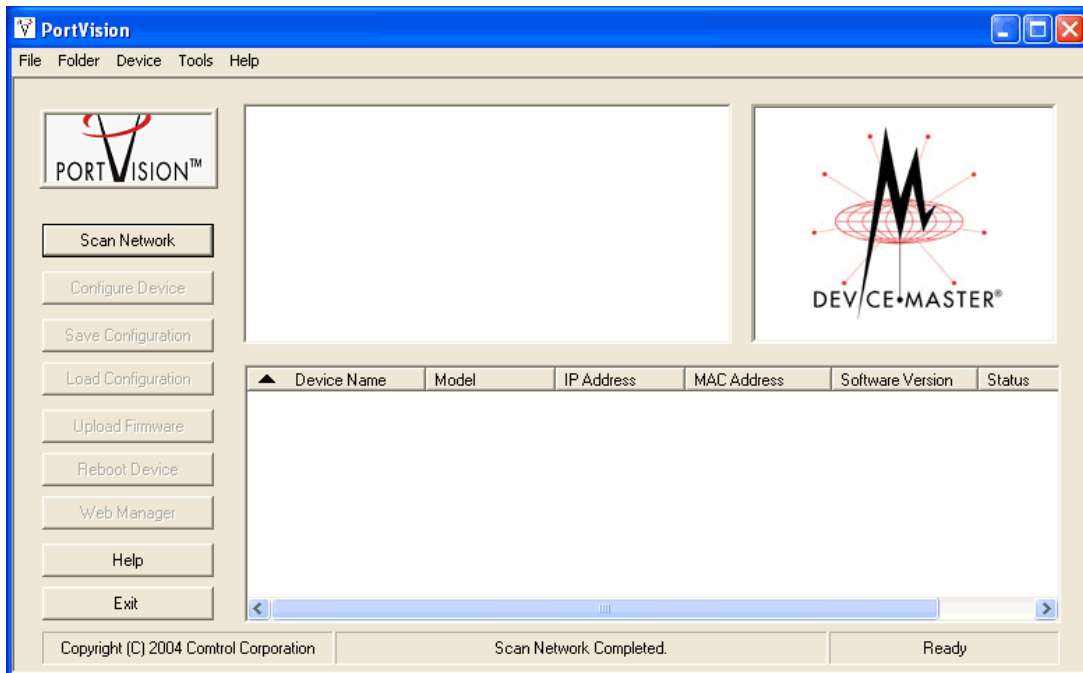
11. When the installation completes click on the Finish button on the Successful Installation page.



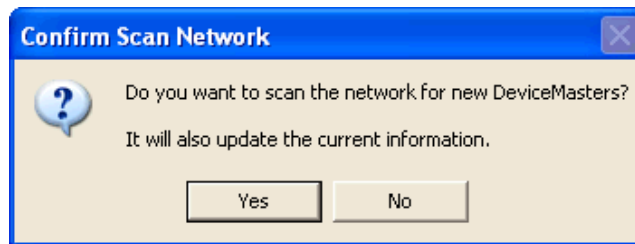
# Configuring the DeviceMaster

## Configuring a New DeviceMaster

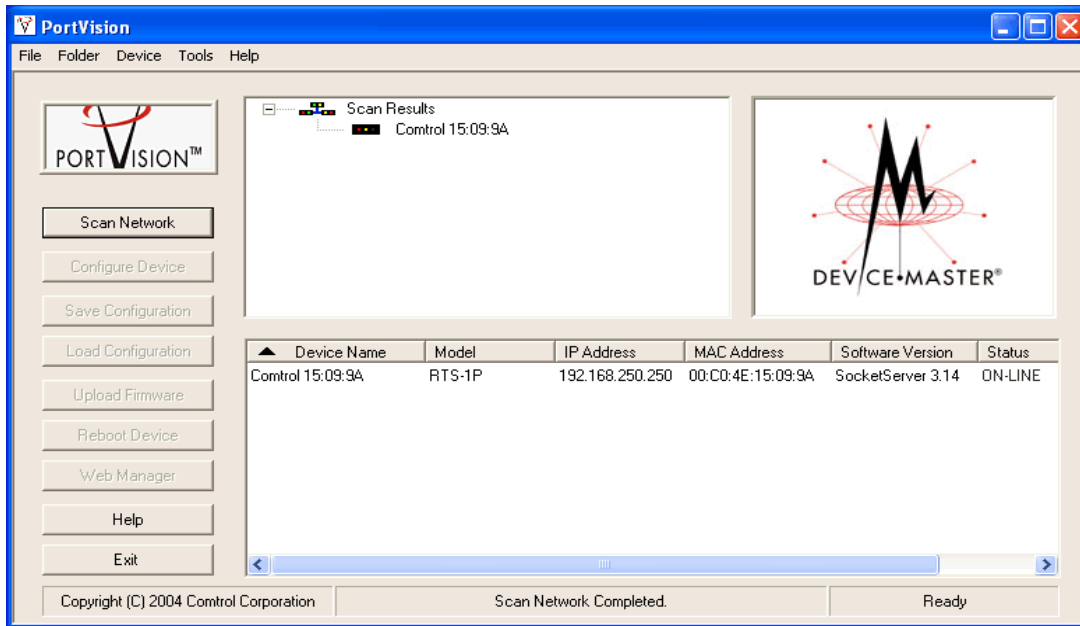
1. To configure the DeviceMaster start the Port Vision software from the shortcut in the Control Start Menu folder.



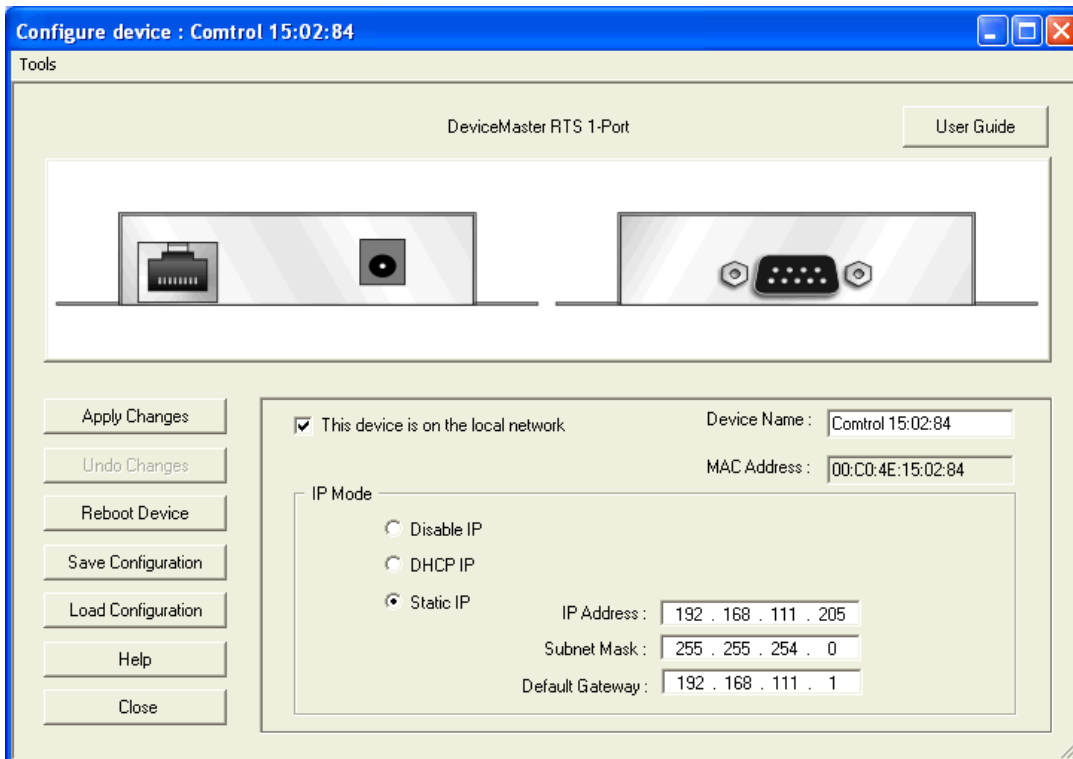
2. In PortVision click on the Scan Network button to scan the network for Control DeviceMaster devices.



3. Click yes in the confirmation window to scan the network.

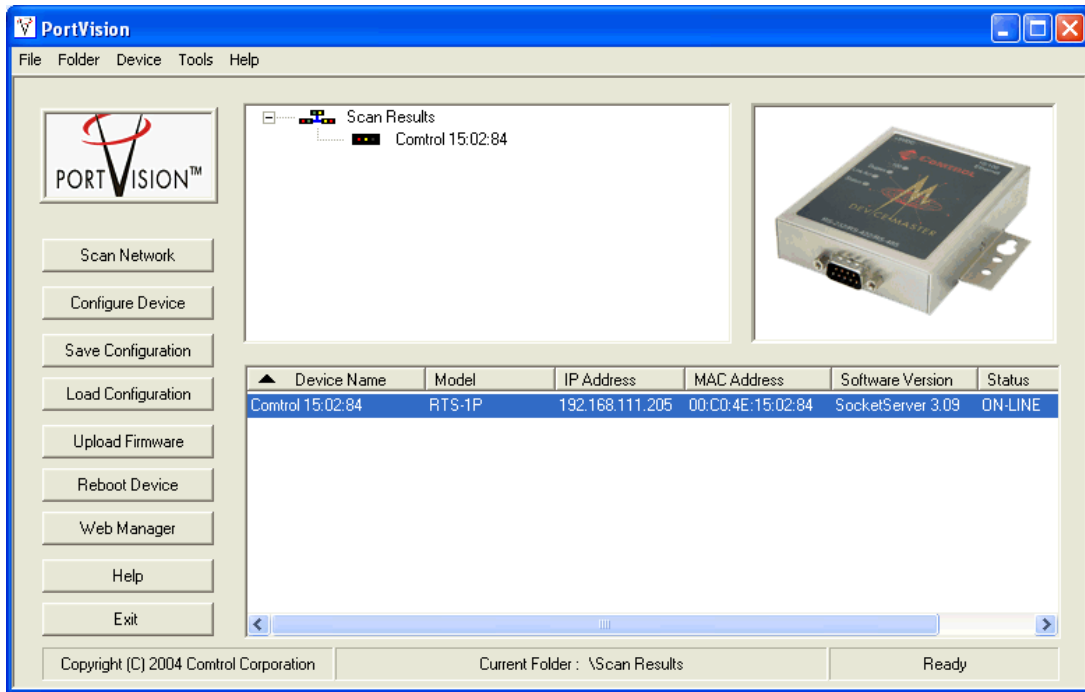


4. Select the device you wish to configure and click the Configure Device button to open the configure device dialog.
5. For drivers in KepserversEx to connect, you will need to select the Static IP mode and then enter the IP Address, Subnet Mask and Default Gateway that will be used by this device.
6. Click Load Configuration button to load the selected network configuration into the device.
7. Next, click the Reboot Device button to reboot the device.



## Reconfiguring a DeviceMaster or Setting the Port Parameters

- To set the comm. port parameters or to reconfigure the network settings of an existing device click on the Web Manager button with the device selected.



- The embedded web server in the Device Master will display the Server Configuration web page. The top portion of this page is for configuring the network parameters. Click the Configure Network link to open the Network Parameters page.



### Server Configuration

**Software:** SocketServer 3.09  
**IP Config:** Static  
**IP Address:** 192.168.111.205  
**IP Netmask:** 255.255.254.0  
**IP Gateway:** 192.168.111.1

[Configure Network](#)

[Configure Email Messages](#)

[Configure RFC1006 \(ISO over TCP\)](#)

- If you were reconfiguring a DeviceMaster you could do so here. Also of equal importance is the TCP Keepalive Timeout. This is the time you wish to keep the TCP port alive after a loss of connection. The default setting is 60 seconds.

11. Click Save to save any changes when you are done.

## Edit Network Configuration

---

**IP Configuration:**       Use DHCP  
                                  Disable IP networking  
                                  Use static configuration below:

**IP Address:**           

**Netmask:**             

**Gateway:**            

**TCP Keepalive Timeout:**

---

12. The bottom portion of the Configuration Page consists of the Port Parameters. Click on the Comm Port link that you wish to edit.

	<u>Port 1</u>
<b>Connection Status</b>	
<b>Enabled:</b>	Yes
<b>Local:</b>	0.0.0.0:0
<b>Remote:</b>	0.0.0.0:0
<b>Rx bytes:</b>	0
<b>Tx bytes:</b>	0
<b>Serial Status</b>	
<b>Mode:</b>	RS-232
<b>Baud:</b>	9600
<b>Parity:</b>	none
<b>Data Bits:</b>	8
<b>Stop Bits:</b>	1
<b>Flow:</b>	none
<b>DTR:</b>	off
<b>EOL:</b>	none
<b>Timeout:</b>	0
<b>Connection Configuration</b>	
<b>Listen:</b>	2101
<b>Connect To:</b>	0.0.0.0:0
<b>Connect On:</b>	never
<b>Disconn On:</b>	never
<b>Idle Timeout:</b>	-

13. We will start by setting the Serial Configuration you will set the communications parameters for the device that will be connected to.
14. First select the type or mode of the connection.
15. Once that is done set the Baud rate, Parity, Data bits, and Stop bits.
16. Then set the type of flow control that is needed.
17. Leave the remaining serial parameters at their defaults.

## Edit Port 1 Configuration

---

### Serial Configuration

**Mode:**

**Baud:**

**Parity:**

**Data Bits:**

**Stop Bits:**

**Flow:**

**DTR:**

**EOL:**    (hex)

**Input Timeout:**  ms

18. Next we will configure the Connection Configuration.
19. Check the Enable box to enable this port.
20. Check the Listen Port to Enable the specified TCP Port to listen for TCP connections.
21. The default Port number for a Control DeviceMaster is 8001 for the first comm. port in the terminal server. In this example we have change that number to 2001.
22. For solicited connections you may leave the rest of parameters at their defaults.

### Connection Configuration

**Enable:**

**Listen:**  Enable on Port:

**Connect To:**  Port:

**Connect On:**  Always,  Data,  DSR,  CD

**Disconnect On:**  Idle,  No DSR,  No CD

**Idle Timer:**

At this point you should be able to connect to a serial device with KepsServerEx through the device master.