



# Connecting to Toshiba T3 PLC's with a Tosline T20 Adapter

V4.01.124

07/01/01

## Introduction

This document is designed to give the user a basic understanding of how to connect to and read data from Toshiba PLC's on a Tosline network using the T20 adapter and the Kepware KEPServerEX server for Toshiba Computerlink communications protocol. For detailed information on Toshiba PLC's and supported communications protocols contact your Toshiba dealer or visit their US web page

## *Toshiba T3 and T20 Setup*

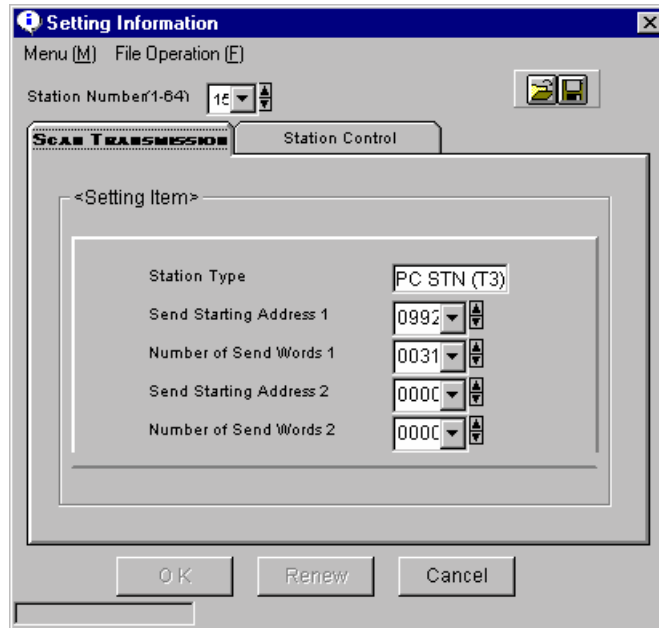
### Devices

T3/T3H

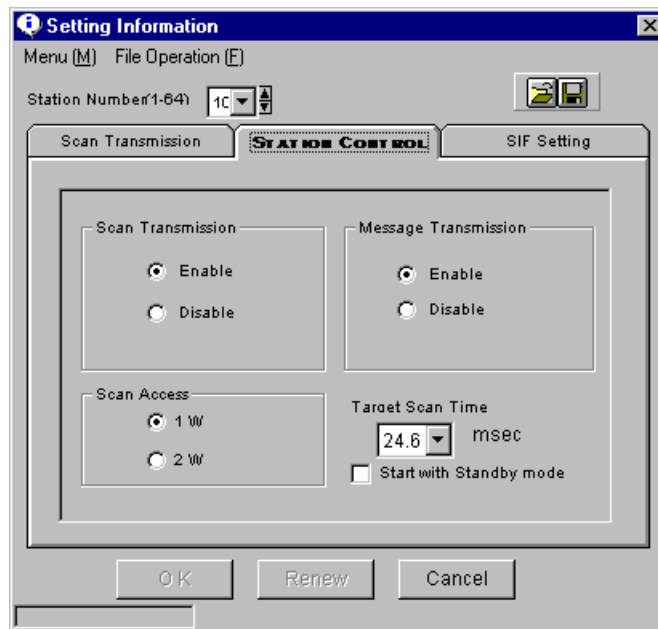
Tosline-S20 SIF(Serial Interface station)

### T3 Setup

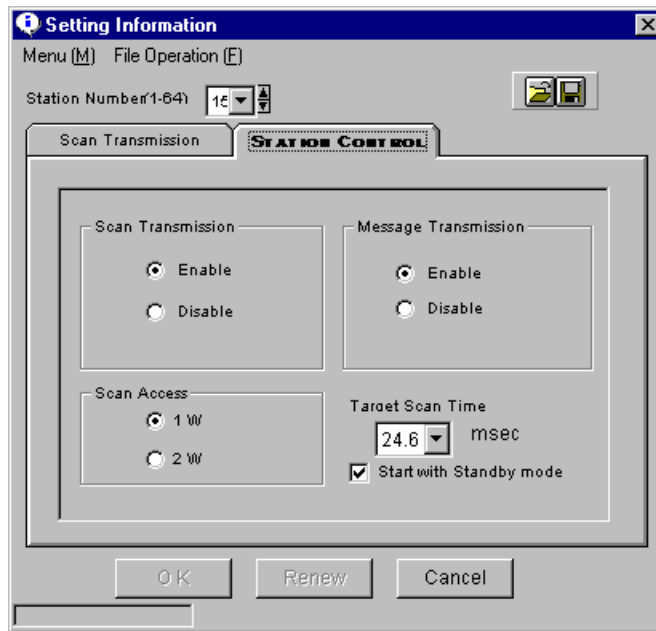
The T3 sets up just like the T2. We used the same programming cable and the same Computerlink cable that are used to make the connections to the T2. The converter is an RS422LPCOR with out power.



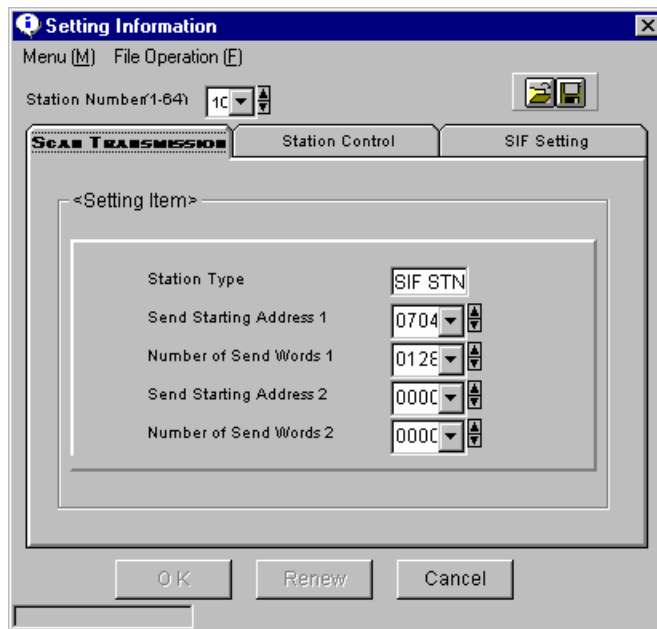
The T3 has an SN322A interface module installed. It is set up with the following settings by default:



The Scan Addresses are for Global Data Transfer. You actually have access to all the addresses in the PLC through the S20.



It is most important that you have message transmission enabled as the Computer link protocol will not work



with out it.

The station number can be from 1-64 and is set via rotary dials on the module. Each station must have a unique station number.

There are server different types of Tosline interface modules. This one has 2 sets of Fiber Optical ports. Others are BNC and BNC and Fiber. If your are connecting to only one layer of Tosline then you can connect to either set of ports. See the manual for connection restrictions when using multiple layers.

## S20 Setup

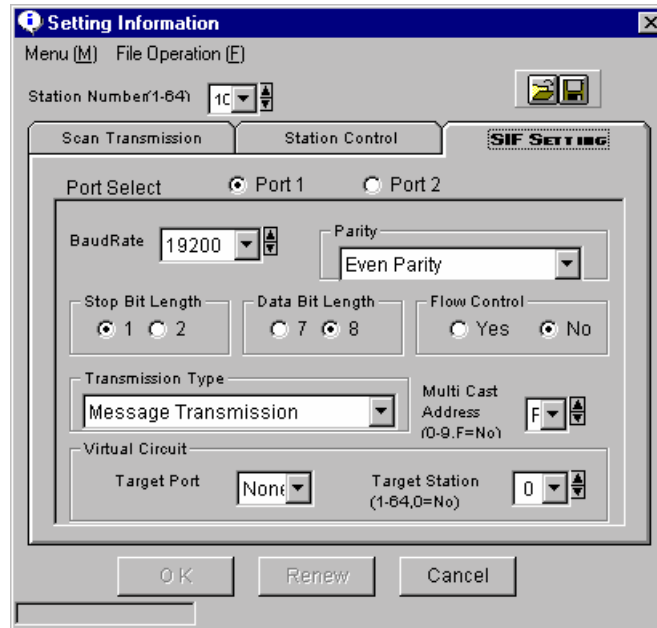
The S20 SIF has two ways to interface. The module has two Comm boards internally, one for RS232 connectivity and one for RS485 connectivity. See the Users manual for how to swap this out and for cable diagrams.

The S20 SIF can have a station number for 1-64 but it cannot be the same as any of the station modules or you will get no communications on the network at all.

The following are the S2 settings:

These address are for the Global link and are not essential to Computer Link Communications.

Just like the Modules you must have Message Transmission Enabled.



Select the Port that you are going to connect to on the S-20 SIF. Set the Comm Parameters and select Message Transmission as the Transmission Type. The rest of the options are disabled when Message Transmission is selected.

# Cabling

