



# Kepware Technologies

---

## KEPServerEX Client Connectivity Guide for GE's CIMPLICITY

April, 2010  
V. 1.000

©Kepware Technologies

# Table of Contents

- 1. Overview and Requirements ..... 1
- 2. Creating a New CIMPLICITY Project ..... 1
- 3. Checking the OPC Connection and Viewing Server Data ..... 6
- 4. Using Kepware’s OPC Quick Client ..... 8

# 1. Overview and Requirements

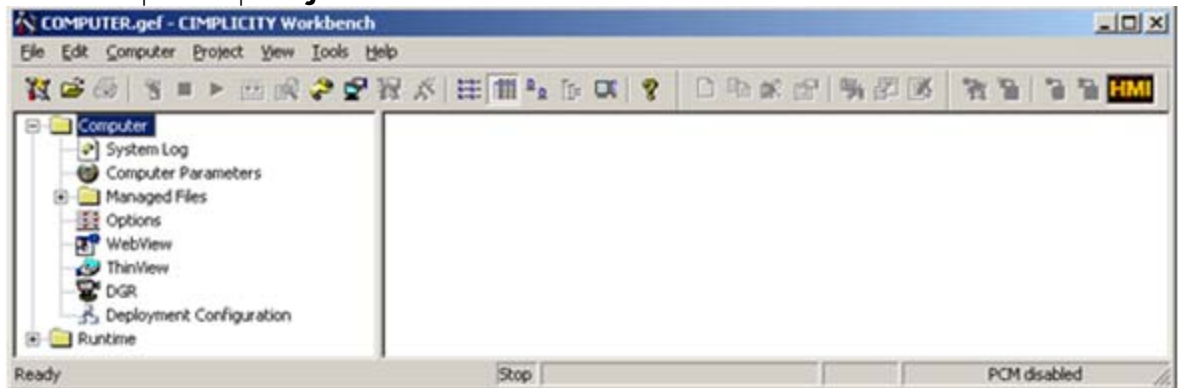
This guide will demonstrate how to establish a connection between the KEPServerEX OPC server and GE's CIMPLICITY. Users must complete the following before continuing with the tutorial:

- Configure a server project. Users may either select the appropriate driver and settings or run the **Simulation Driver Demo** that is included with KEPServerEX. The Simulation Driver Demo project will be used for all examples in the tutorial.
- Start KEPServerEX and load the Simulation Driver Demo project. Once the server project has been loaded, open the Runtime menu on the main menu bar and verify that the server project has been connected.

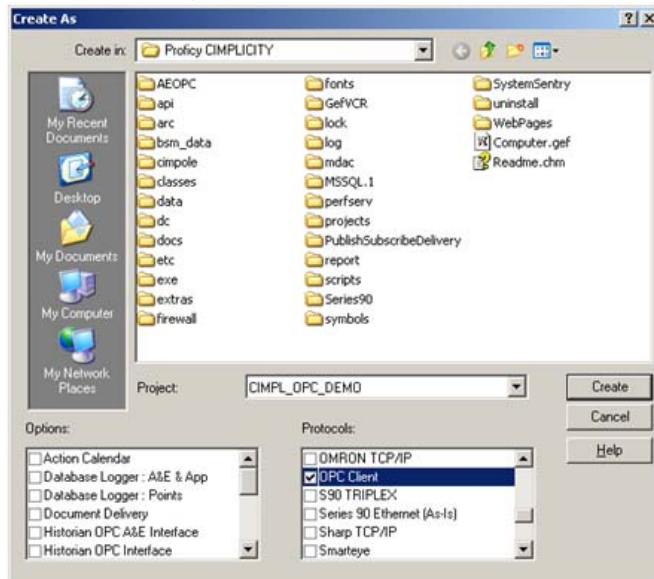
## 2. Creating a New CIMPLICITY Project

For this tutorial, GE's CIMPLICITY version 7.5 will be used.

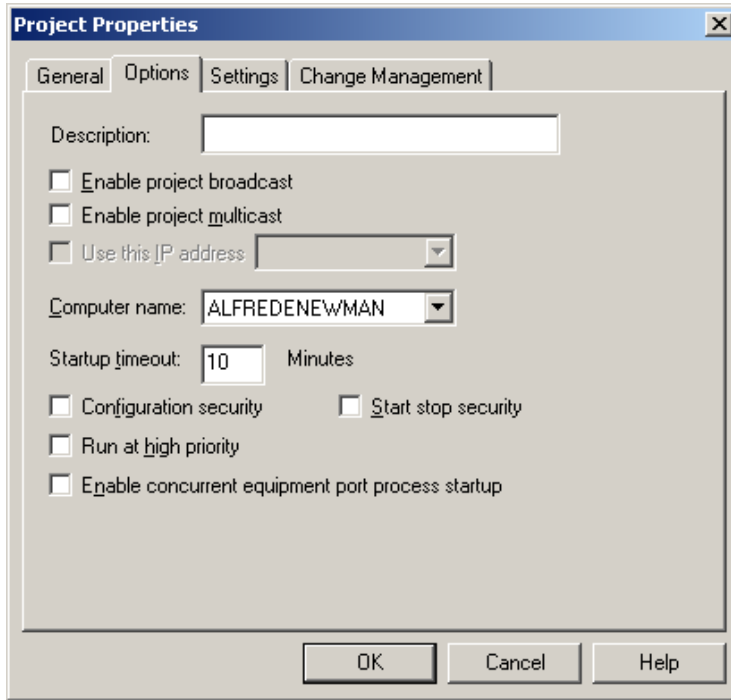
1. Start the **CIMPLICITY Workbench**, and then click **New Project**. Alternatively, click **File | New | Project**.



2. In **Create As**, enter a project name. For this tutorial, "CIMPL\_OPC\_DEMO" will be used. Leave all **Options** unselected, but select **OPC Client** under **Protocols**. Once finished, click **Create**.



3. If planning on providing information from the project to the rest of the network, check **Enable Project Broadcast**; otherwise, click **OK**.

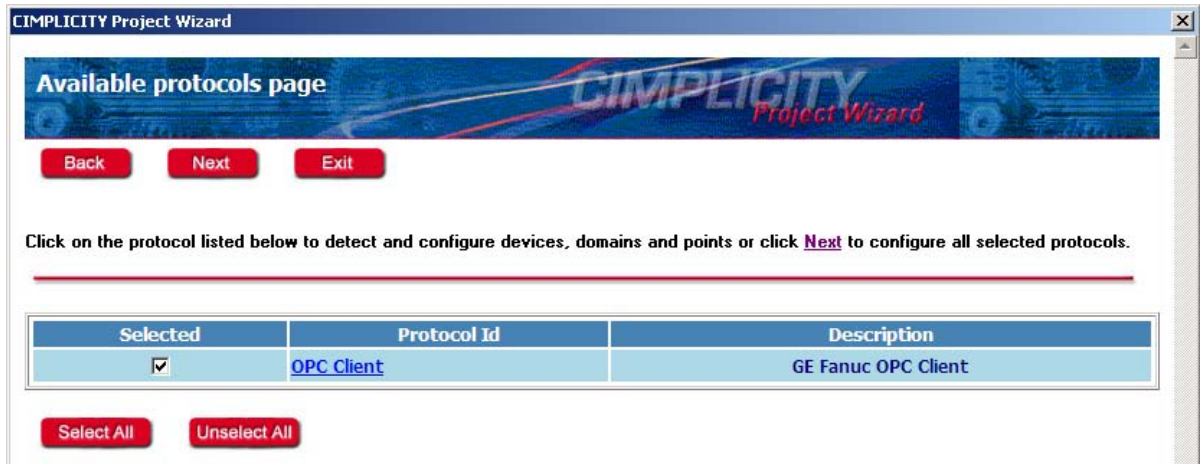


**Note:** CIMPLICITY's Project Wizard should start automatically. If it does not, click **Project | Project Wizard** to start it manually from the Workbench.

4. Click **Next**.



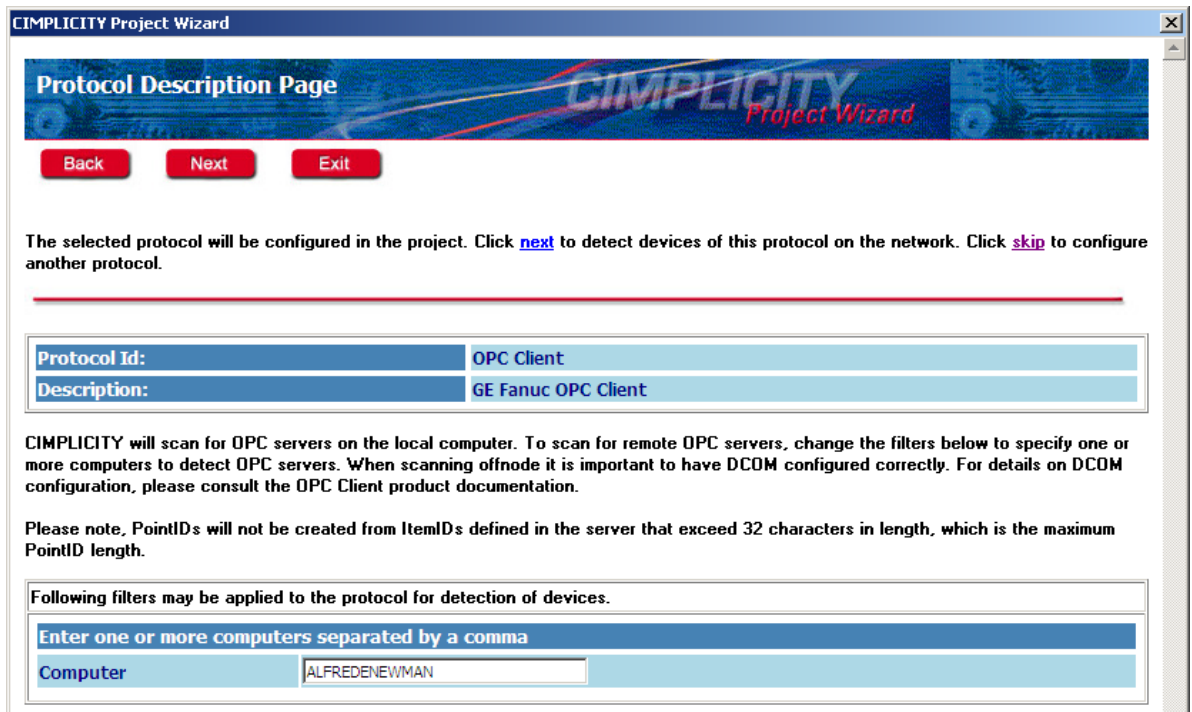
5. The **Available Protocols Page** will list all protocols included in the project. For this tutorial, only the OPC Client protocol will be visible. To configure the OPC Client protocol, check **Selected** and then click **Next**.



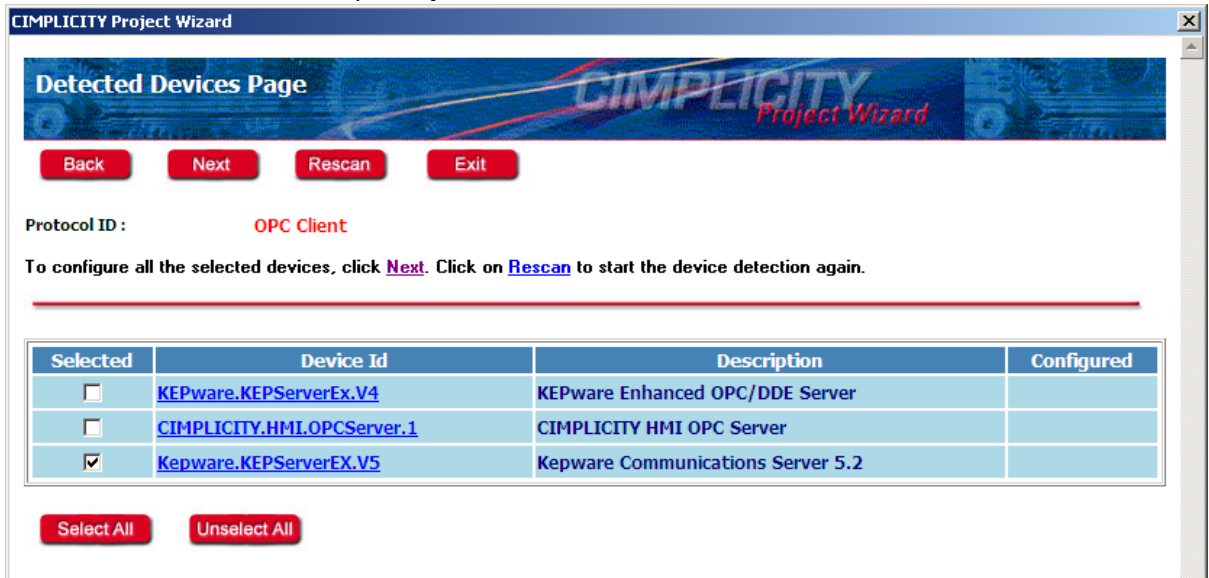
- In **Protocol Description Page**, verify that the computer name appears in the list that will be searched for valid devices. By default, the wizard sets its browse filter to look on the local PC for servers only. To look on another PC, replace the local PC's name with the remote PC's name.

**Note:** Users attempting a remote connection to the server will need to configure DCOM. For more information, refer to [DCOM Configuration for KEPServerEX](#).

- Once finished, click **Next**.



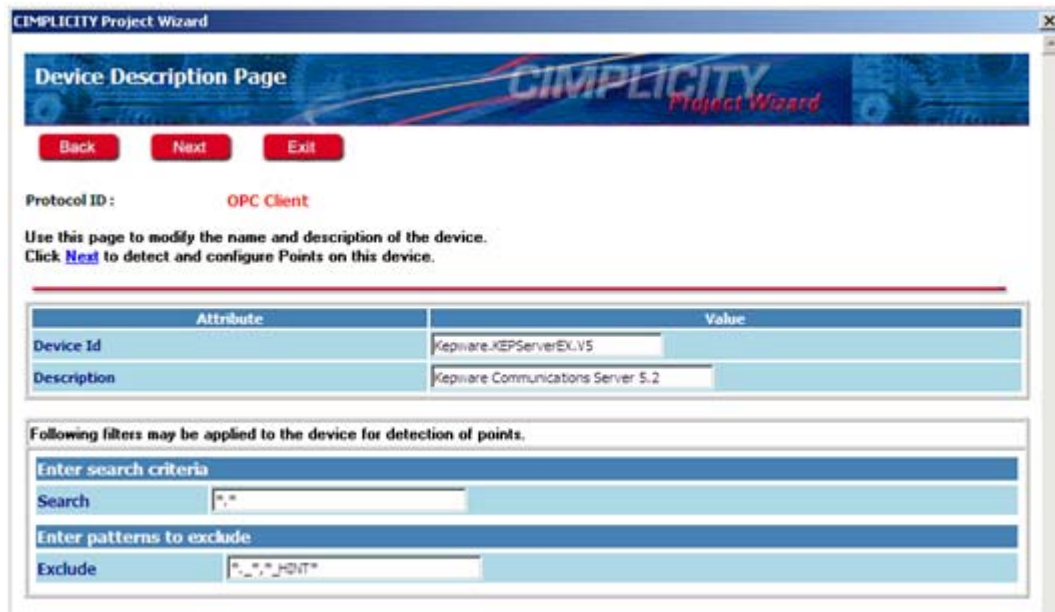
- The **Detected Devices Page** will display all installed and available OPC servers. Uncheck all servers except **KePware.KEPServerEX.V5** and then click **Next**.



- In **Device Description Page**, verify that the correct server has been selected. Users can then edit the point/tag search criteria, and exclude specific tags and groups of tags as desired.

**Note:** The Project Wizard excludes System Tags and Hints by default.

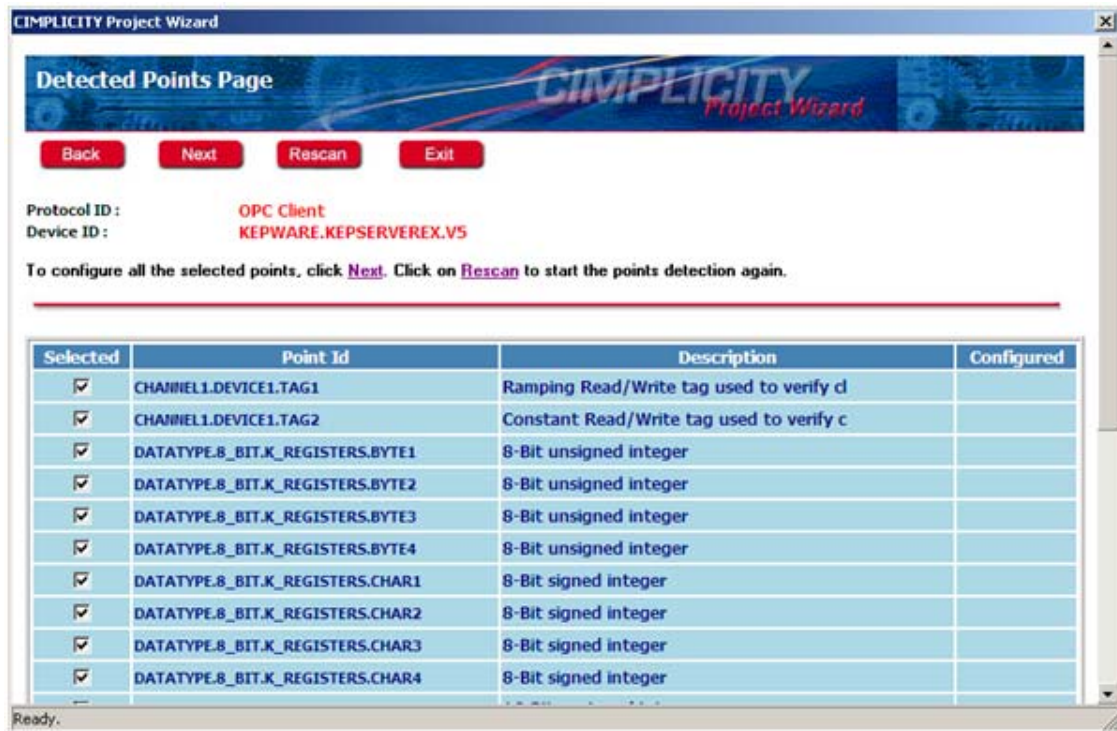
- Once finished, click **Next**.



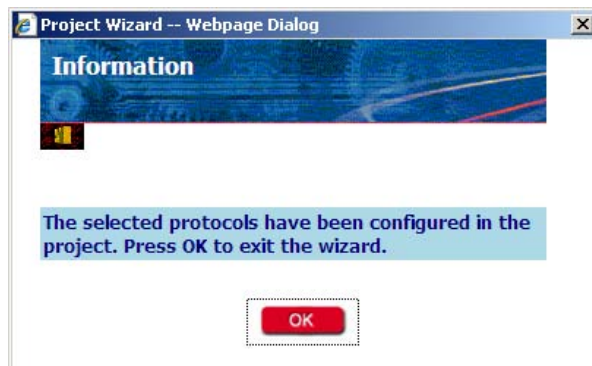
- The **Detected Points Page** will display all tags that satisfy the filter criteria. All points will be selected by default. At this time, unselect any unwanted tags.

**Note:** If all of the desired tags are not displayed, return to the previous step. Re-evaluate the search and exclusion criteria before browsing the server again. Any new tags added to the server require that the Project Wizard be restarted and the server rescanned.

13. Once finished, click **Next**.



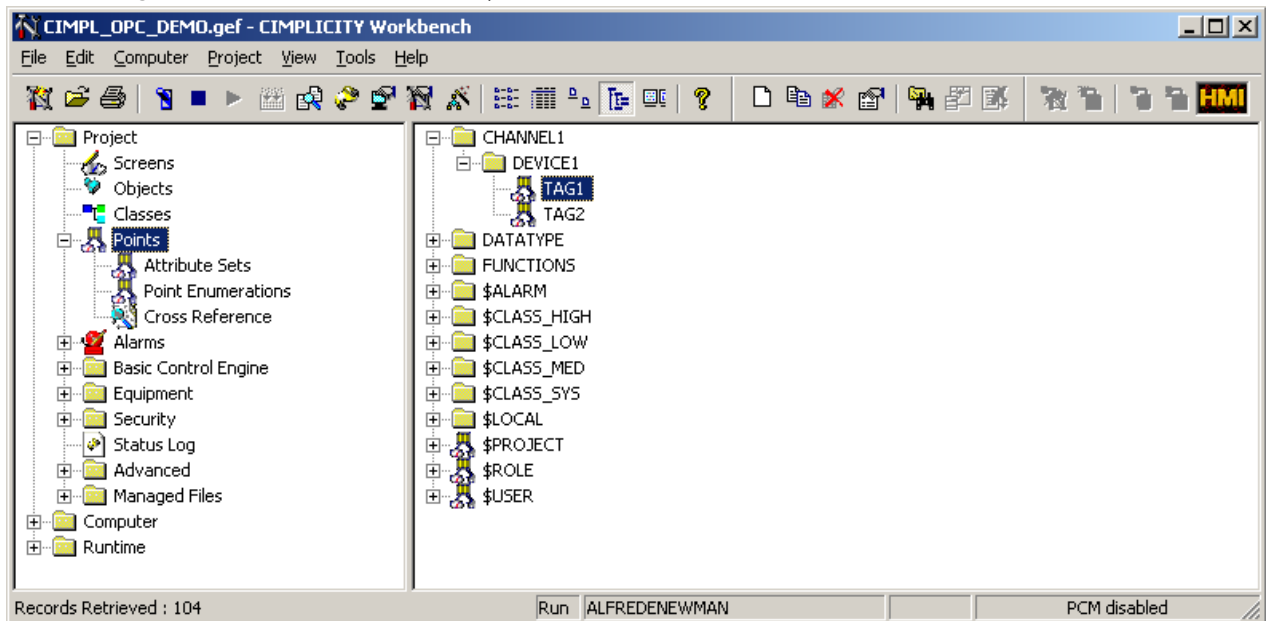
14. The **Information** dialog will be displayed once the Project Wizard has extracted the point data from the server and added it to the project. Click **OK** to exit the wizard.



15. Next, click **OK**.



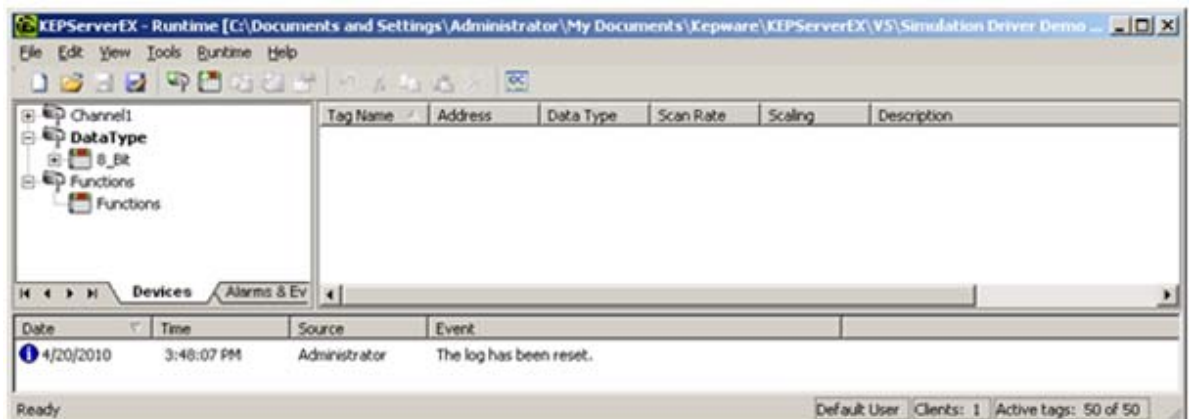
- In Workbench, select the **Points** icon. To display the newly added points, expand the folders in the right-hand pane under **Channel1 | Device1**. For a list view of tag information, click **View | Details**.



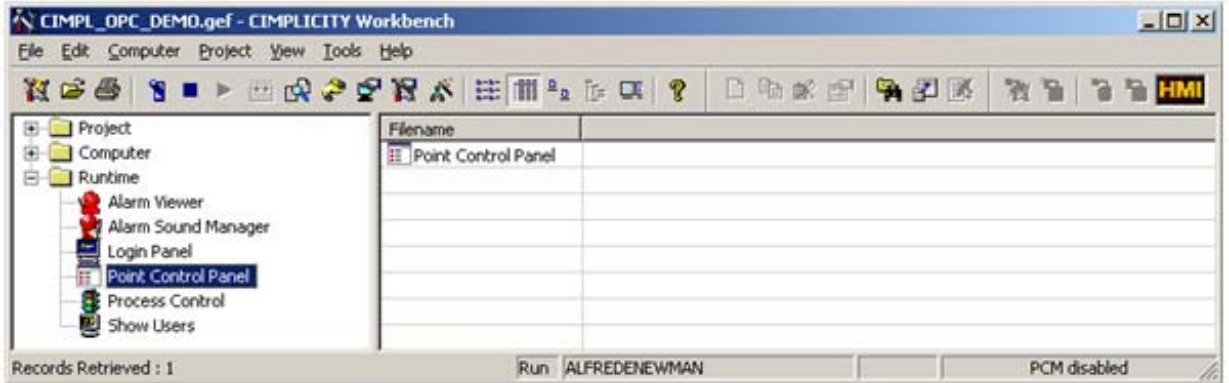
### 3. Checking the OPC Connection and Viewing Server Data

- In Workbench, start the CIMPLICITY project if it is not already running by clicking **Run**.
- Next, view KEPServerEX and then check the Connection Status bar (located at the bottom-right of the server interface). There should be at least one Client and 1 of 1 Active Tags. In this tutorial, there are 50 of 50 Active Tags because all available tags were selected.

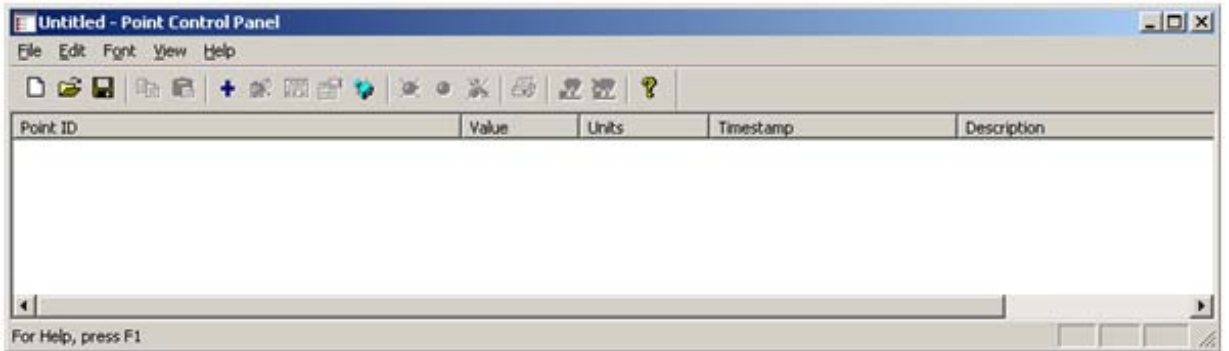
**Note:** If the Connection Status bar is blank, then CIMPLICITY is not connected to the server.



- Return to the Workbench. In the project tree, expand the **Runtime** folder and then double-click **Point Control Panel**.

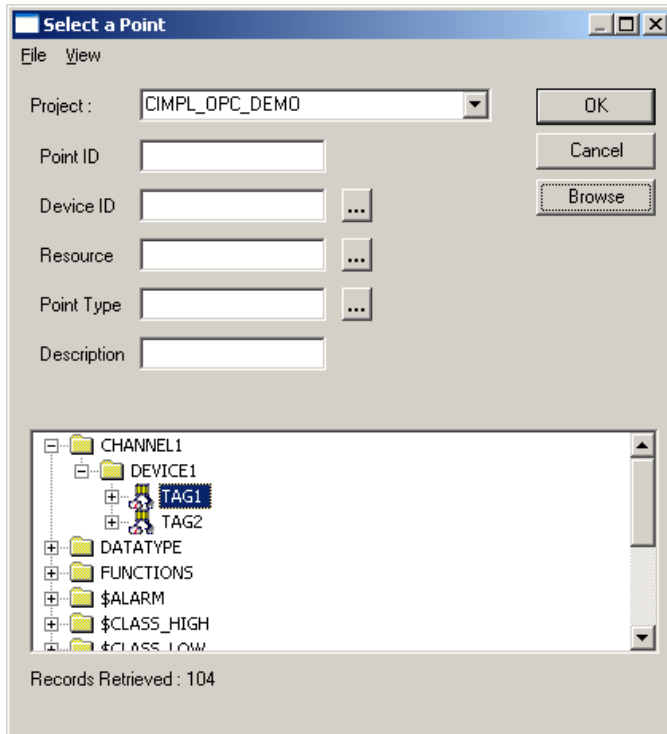


- In **Untitled-Point Control Panel**, select **Edit | Add Points**.

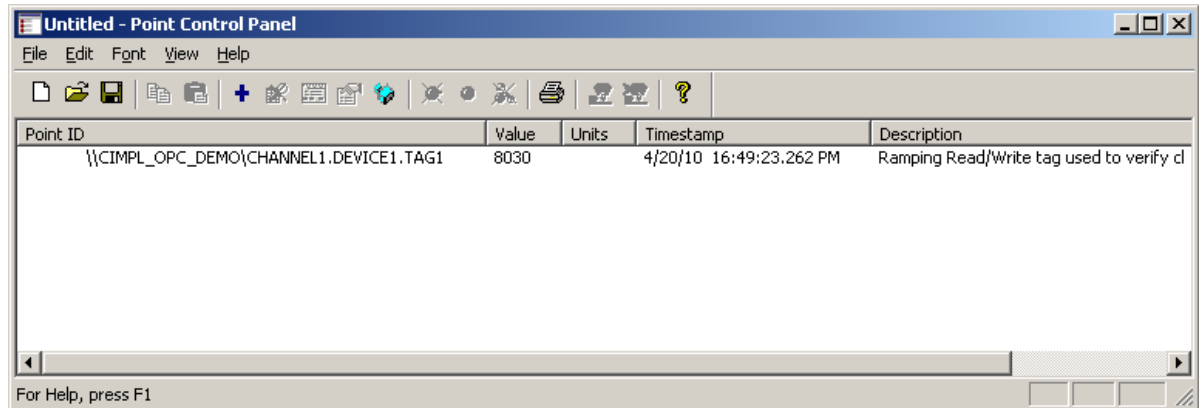


- In **Select a Point**, expand the branches of the tree and then select the desired points. Once finished, click **OK**.

**Note:** For this tutorial "TAG1" has been chosen.



**Note:** The selected point should now be displayed in **Untitled – Point Control Panel**. If Simulation Driver Demo was the server project used, "TAG1" should be exhibiting ramping data.



## 4. Using Kepware's OPC Quick Client

Kepware provides an OPC client application for testing purposes with each installation of KEPServerEX. For more information, refer to the OPC Quick Client's help documentation.