



Kepware Technologies

Client Connectivity Guide for Think & Do's Live!

March, 2011
Version 1.000

©Kepware Technologies

Table of Contents

- 1. Overview 1
 - 1.1 Connecting to KEPServerEX from Think & Do's Live! 1
 - 1.2 Configuring a Tag Link to the Server 5
 - 1.3 Creating a Display Window 5
- 2. Using Kepware's OPC Client 7

1. Overview

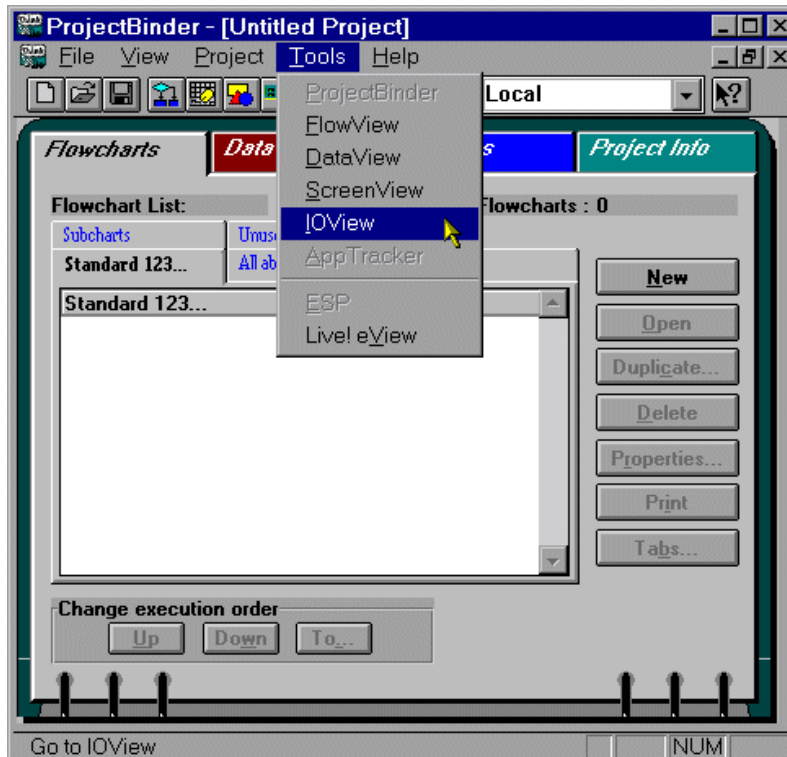
Think & Do uses a graphical flow chart approach to create connectivity and acquire data. This allows users to visualize the flow of information from server to data display object. This document intends to discuss how to use Think & Do's Live! to connect to KEPServerEX.

1.1 Connecting to KEPServerEX from Think & Do's Live!

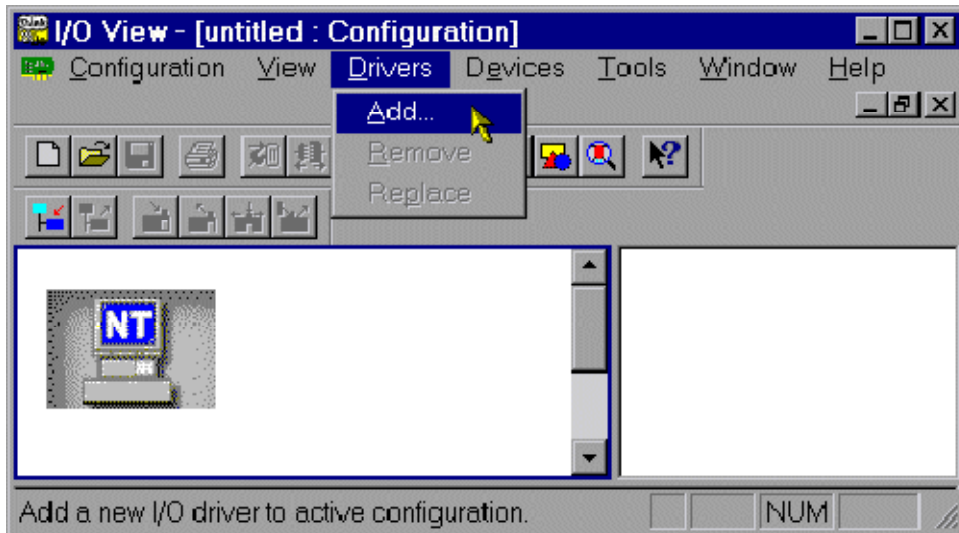
1. To start, launch **KEPServerEX**.
2. Next, click **File | Open**. Then, select the "simdemo.opf" project and click **OK**.
3. Open Think & Do's **Project Binder**, and then click **File | New**.



4. In **Runtime Target**, select the operating system in which the project will run. In this example, "Windows NT Certified PC" has been selected.
5. Once finished, click **OK**.
6. Next, click **Tools | IOView**.



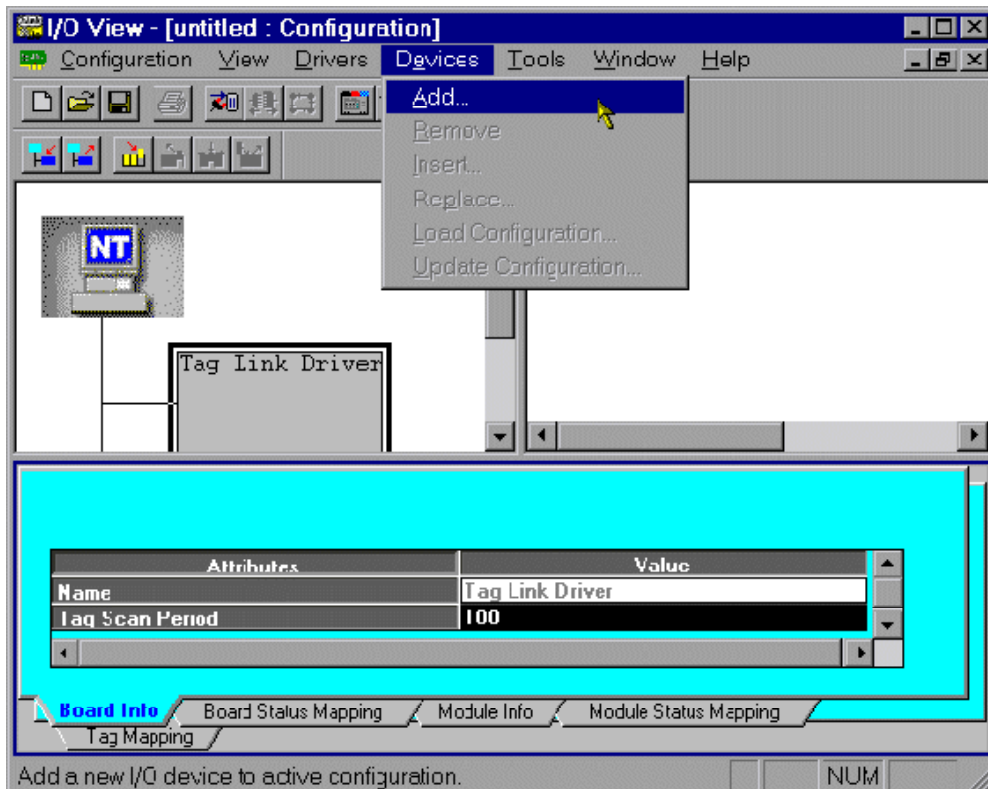
7. Next, click **Drivers** | **Add**.



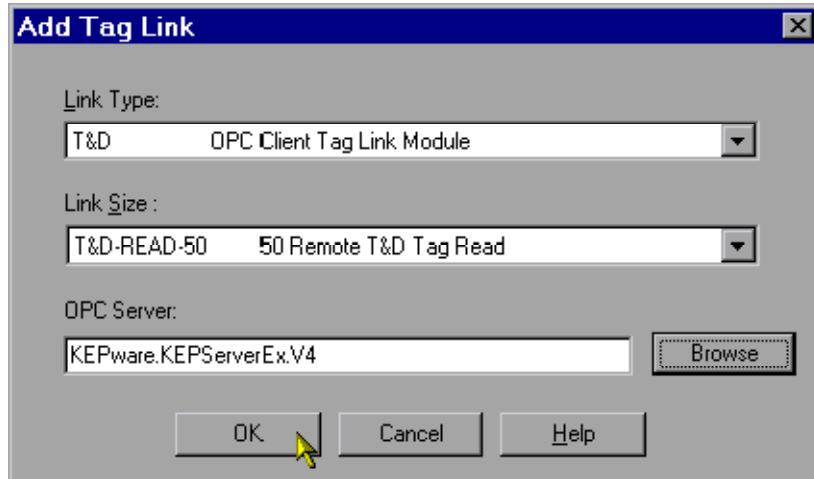
8. Beneath **Select I/O Driver**, select **Tag Link Server**. Then, click **OK**.



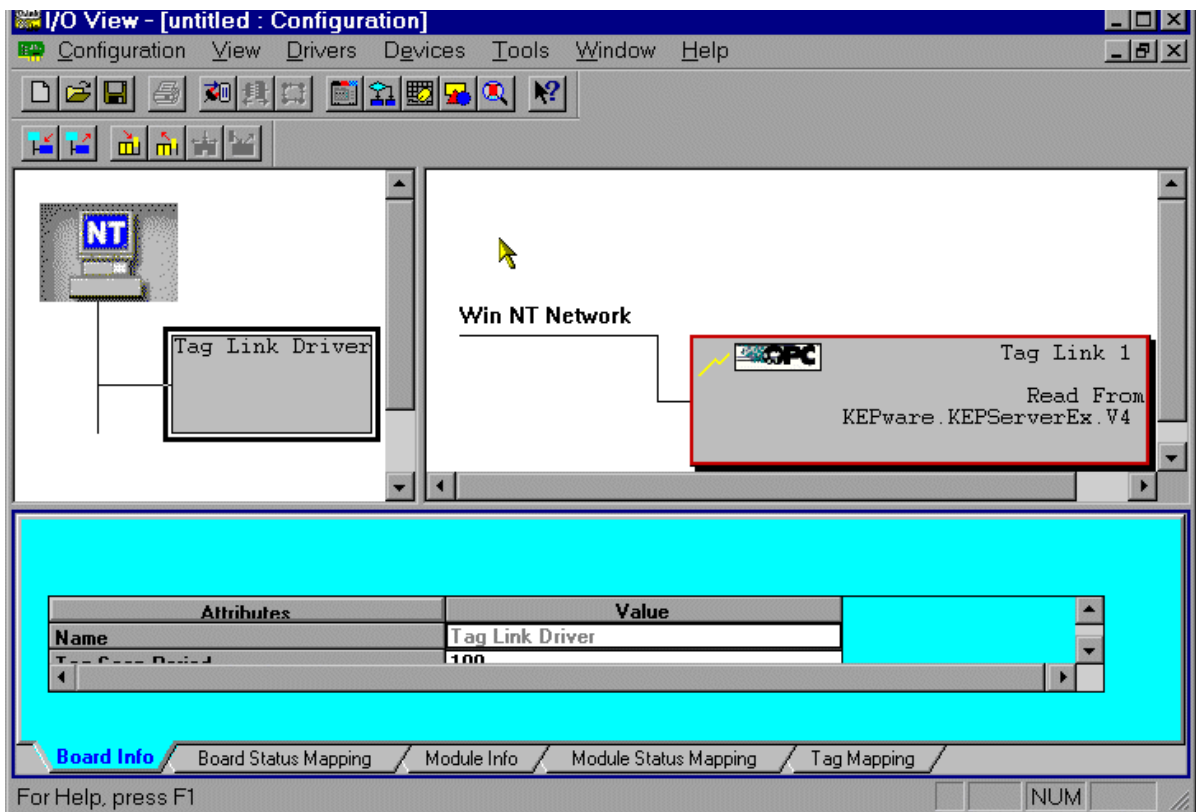
9. Next, click **Devices** | **Add**.



- In **Add Tag Link**, beneath **Link Type**, select **T&D OPC Client Tag Link Module**.



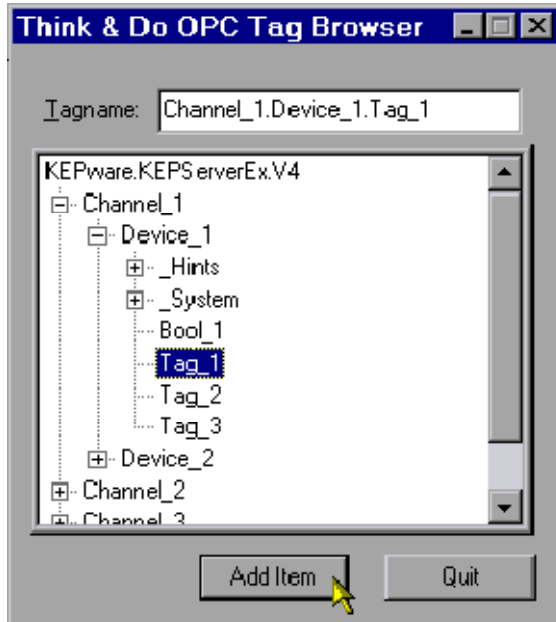
- Next, click **Browse** to locate and select "KEPServerEX.v4".
- Then, click **OK**.
- At the bottom of the **I/O View** window pane, select the **Tag Mapping** tab.



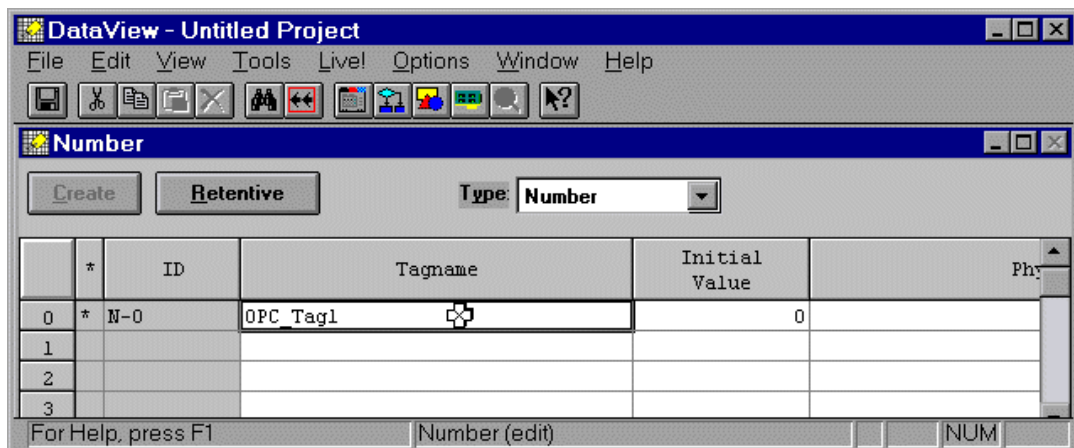
- Then, right-click on the first **Remote Tagname** field to browse for a tag in KEPServerEX.

	Local Type	Local ID	Local Tagname	Remote Tagname	Value	Remote Mapping Key
1	Number				N/A	Lnk1_Item0 KEPware.KEPServerEx.V4 \
2	Counter				N/A	Lnk1_Item1 KEPware.KEPServerEx.V4 \
3	Counter				N/A	Lnk1_Item2 KEPware.KEPServerEx.V4 \
4	Counter				N/A	Lnk1_Item3 KEPware.KEPServerEx.V4 \
5	Counter				N/A	Lnk1_Item4 KEPware.KEPServerEx.V4 \

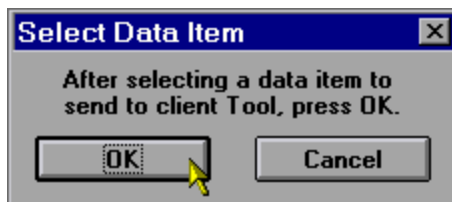
- In **Think & Do OPC Tag Browser**, locate and select the appropriate pre-defined tag item. Then, click **Add Item**.



- Next, click **Quit**.
- Return to the **Tag Mapping** tab. In the same row that the remote tag was added (beneath **Local Type**), locate and select a data type for the item. In this example, "Number" is used.
- Then, double-click on **Local Tagname**.



- In the **DataView** window, select the correct data type, and then enter the local tag's name. In this example, "OPC_Tag1" is used.
- In **Select Data Item**, click **OK**.



Note: The window should appear as shown below.

	Local Type	Local ID	Local Tagname	Remote Tagname	Value	Remote Mapping Ke
1	Number	N-0	OPC_Tag1	Channel_1.Device_1.Tag_1	N/A	Lnk1_Item0_KEPware.KEPSei
2	Counter				N/A	Lnk1_Item1_KEPware.KEPSei
3	Counter				N/A	Lnk1_Item2_KEPware.KEPSei

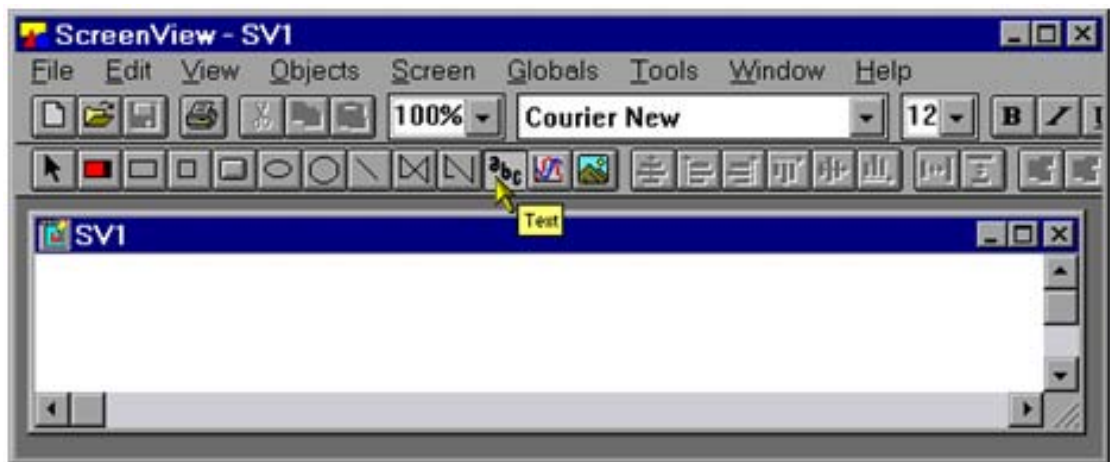
1.2 Configuring a Tag Link to the Server

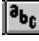
Once a tag has been linked, a connection can be made from the Tag Link Driver to the KEPServerEX "simdemo.opf" project. For more information, refer to the instructions below.

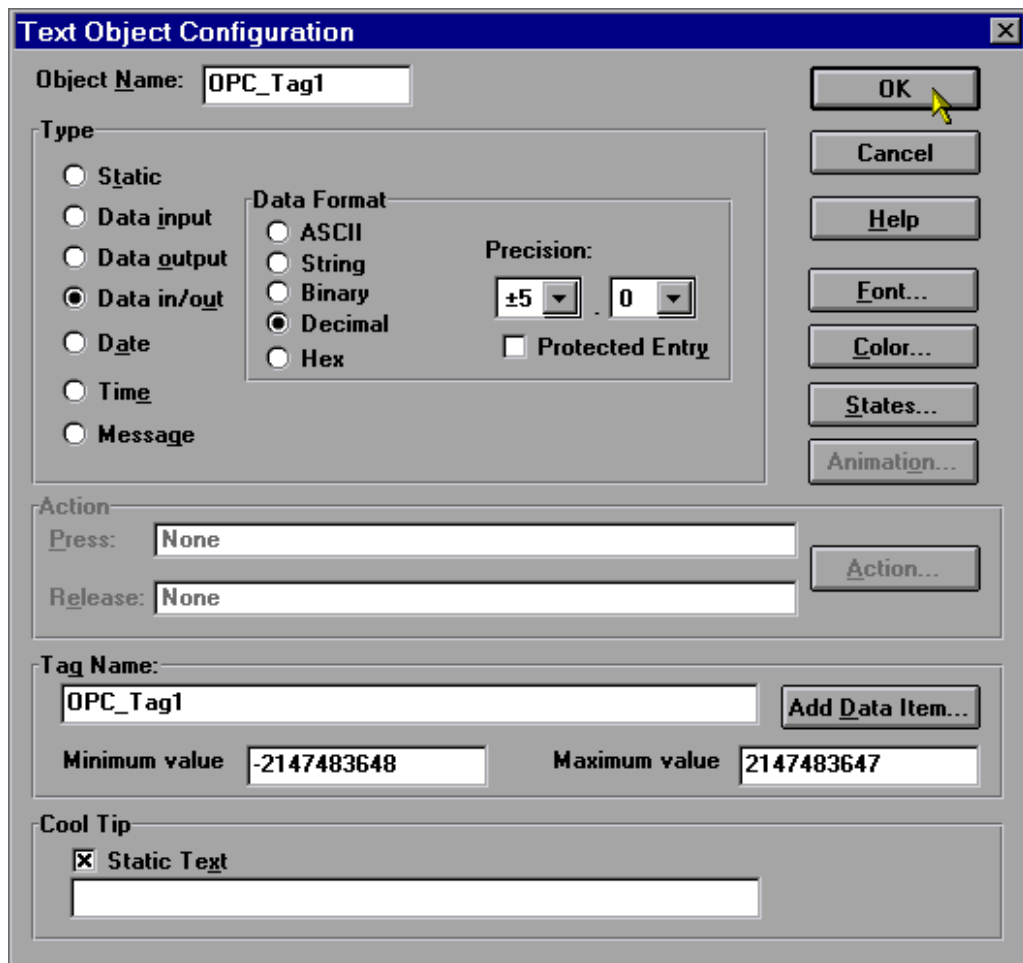
1. In the **I/O View** menu, select **Configuration**.
2. In the drop-down menu, select **Connect**. Then, select **Disconnect**.


1.3 Creating a Display Window

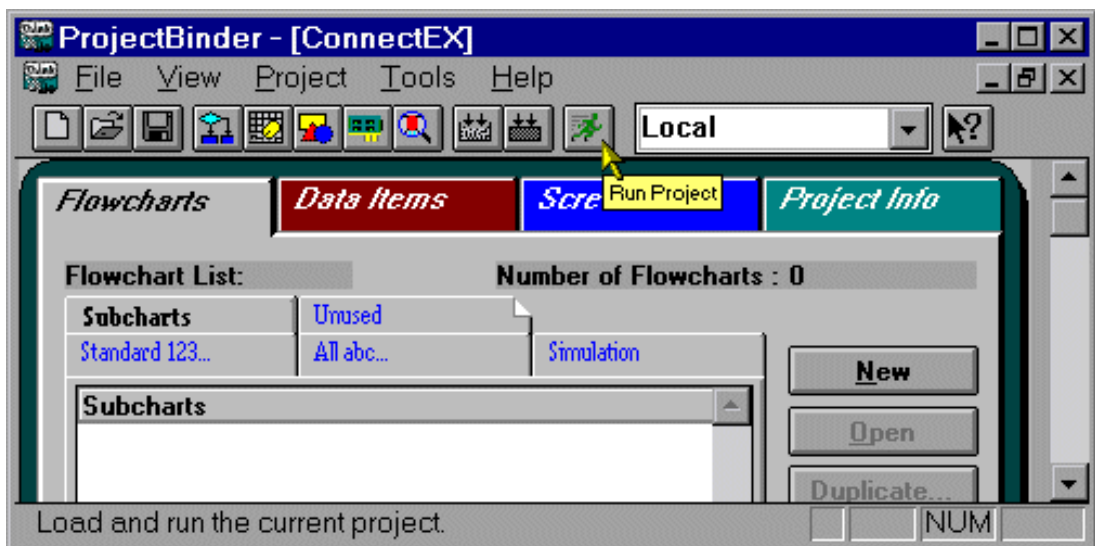
1. Next, click **Tools | ScreenView**. Then, click **File | New**.




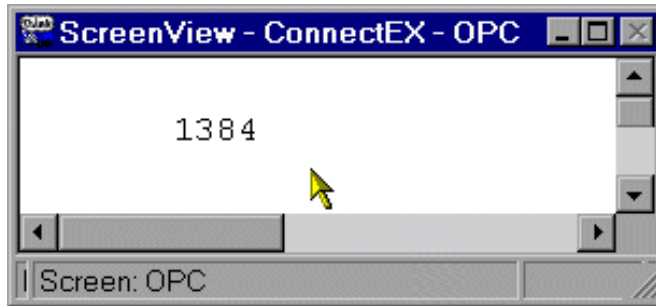
2. Locate and select the **Text** icon  from the toolbar. Place the cursor on the **View** screen, and then click the left mouse button. This will place the text object on the screen.
3. Next, double-click on the object. Then, select **Properties**.
4. In **Text Object Configuration**, do the following:
 - In **Object Name**, specify the desired name. In this example, "OPC_Tag1" is used.
 - In **Type**, select **Data in/out**.
 - In **Tag Name**, specify the local tag name. To do so, click **Add Data Item** and then browse for the local tag. In this example, "OPC_Tag1" is used.



5. Once finished, click **File | Save**.
6. In **ScreenView**, click **Tools | Project Binder**.
7. Next, open the **Screens** tab. To allow the newly created **View** screen to load while the project is executed, click the **Start Up** icon.
8. Once finished, return to **ProjectBinder**. Then, click **File | Save**.
9. To build a runtime version of the project, click the **Build** icon .



10. To run the project, click the **Run** icon .



2. Using Kepware's OPC Client

Kepware provides an OPC client application with each installation of KEPServerEX for testing purposes. For more information, refer to the OPC Quick Client help file.