

KEPServerEX® Version 6

Install Guide

Table of Contents

There are three different installation scenarios for KEPServerEX V6 based on the machine history.

Scenario One	2
Installing KEPServerEX V6 on a Clean Machine	
Scenario Two	3
Upgrading from Version 5 to Version 6	
Scenario Three	5
Installing KEPServerEX V6 on a Machine with Existing Licenses	
Licensing Resources	8
Technical Support	9

Scenario One Installing KEPServerEX V6 on a Clean Machine

This scenario is applicable for users that do not have KEPServerEX V5 installed and want to install KEPServerEX V6.

Note

You can change the language KEPServerEX is running in at any time following the install.

To do so, right-click on the **KEPServerEX** icon located in the System Tray and then select **Settings**. Open the **Administration** tab and then use the **Product Language Selection** drop-down menu.

Please note that user-defined channel, device, and tag names will not be translated in the event of a language change.

1. Launch the KEPServerEX V6 install wizard.
 2. Next, select your preferred language. Options include English, German, Japanese, and Chinese. Please see the Kepware Knowledge Base for more information on the drivers that have been localized into German, Japanese, and Chinese.
 3. In **End-User License Agreement**, read the license agreement and accept the terms to continue.
 4. In **Destination Folder**, accept or change the location of installation. By default, it will be installed into the following location:
C:\Program Files\Kepware\KEPServerEX 6\.
 5. In **Application Data Folder**, accept or change the location of installation. The Application Data folder contains project backup and supporting files. It must be accessible to all users and any user-specified path must be local to the PC. By default, it will be installed into the following location: C:\ProgramData\Kepware\KEPServerEX 6\.
 6. In **Shortcuts**, select whether to create a shortcut on the desktop for the KEPServerEX Configuration. When this is not selected, the Configuration will only be accessible through the Start Menu and the server's Administration Menu.
 7. Optional: In **Vertical Suite Selection**, select a vertical suite to pre-select associated drivers and advanced plug-ins for installation.
- Select **Typical** to install all drivers and advanced plug-ins. Select **Custom** to specify the drivers and advanced plug-ins you would like to install.
8. In **Select Features**, select the features to install. If no features are selected, no drivers, advanced plug-ins, or interfaces will be installed. Please note that when a main component is selected, all of its sub-components will also be installed. To select specific components:
 - Expand the **Communication Drivers** tree to view and select drivers for installation.
 - Expand the **Native Client Interfaces** tree to view and select custom client interfaces.
 - Expand the **Plug-Ins** tree to view and select server-level components.
 9. Setup can detect when selected features have external dependencies. Although you can proceed with the installation, you should verify that the dependencies have been met before attempting to use the features during Runtime. For more information, refer to the individual feature's help file.
 10. In **Default Application Settings**, specify whether to enable Dynamic Tag addressing by default and whether to allow anonymous login for UA Client Sessions. These settings may be changed later.
 11. Finish the installation.

Scenario Two Upgrading from Version 5 to Version 6

This scenario is applicable for users that are running an unlicensed version of KEPServerEX V5 and want to upgrade to KEPServerEX V6.

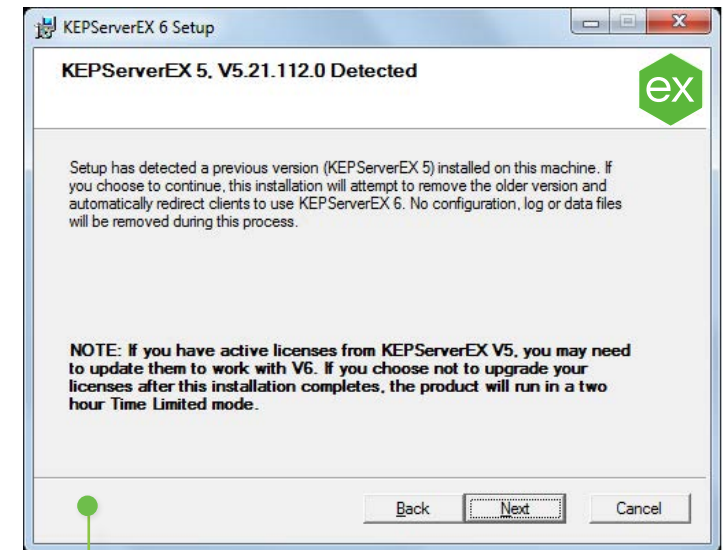
Note

You can change the language KEPServerEX is running in at any time following the install.

To do so, right-click on the **KEPServerEX** icon located in the System Tray and then select **Settings**. Open the **Administration** tab and then use the **Product Language Selection** drop-down menu.

Please note that user-defined channel, device, and tag names will not be translated in the event of a language change.

1. Launch the KEPServerEX V6 install wizard.
2. Next, select your preferred language. Options include English, German, Japanese, and Chinese. Please see the Kepware Knowledge Base for more information on the drivers that have been localized into German, Japanese, and Chinese.
3. In **End-User License Agreement**, read the license agreement and accept the terms to continue.
4. Setup can detect when a previous version of the server is installed. If you continue with the installation, the legacy server will be removed and automatically direct all clients to the new server. If you choose to continue, the product will run in time-limited mode (two-hour increments).
5. In **Destination Folder**, accept or change the location of installation. By default, it will be installed into the following location:
C:\Program Files\Kepware\KEPServerEX 5\.
6. In **Application Data Folder**, accept or change the location of installation. The Application Data folder must be accessible to all users, and any user-specified path must be local to the PC. By default, it will be installed into the following location: C:\ProgramData\.



Scenario Two Upgrading from Version 5 to Version 6

7. In **Shortcuts**, select whether to create a shortcut on the desktop for the KEPServerEX Configuration. When this is not selected, the Configuration will only be accessible through the Start Menu and the server's Administration Menu.
8. In **Select Features**, select the features to install. If no features are selected, no drivers, advanced plug-ins, or interfaces will be installed. Please note that when a main component is selected, all of its sub-components will also be installed. To select specific components:
 - Expand the **Communication Drivers** tree to view and select drivers for installation.
 - Expand the **Native Client Interfaces** tree to view and select custom client interfaces.
 - Expand the **Plug-Ins** tree to view and select server-level components.
9. Setup can detect when selected features have external dependencies. Although you can proceed with the installation, you should verify that the dependencies have been met before attempting to use the features during Runtime. For more information, refer to the individual feature's help file.
10. In **Default Application Settings**, specify whether to enable Dynamic Tag addressing by default and whether to allow anonymous login for UA Client Sessions. These settings may be changed later.
11. Finish the installation.

Scenario Three Installing Version 6 On a Machine with Existing Licenses

This scenario is applicable to users that have previously installed and licensed KEPServerEX Version 5 and may or may not have an active Support & Maintenance Agreement.

Note

You can change the language KEPServerEX is running in at any time following the install.

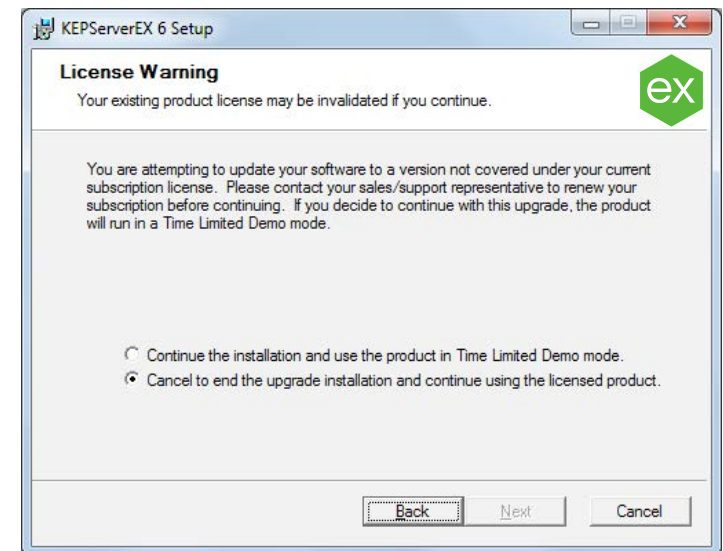
To do so, right-click on the **KEPServerEX** icon located in the System Tray and then select **Settings**. Open the **Administration** tab and then use the **Product Language Selection** drop-down menu.

Please note that user-defined channel, device, and tag names will not be translated in the event of a language change.

1. Launch the KEPServerEX V6 install wizard.
2. Next, select your preferred language. Options include English, German, Japanese, and Chinese. Please see the Kepware Knowledge Base for more information on the drivers that have been localized into German, Japanese, and Chinese.
3. Read the **License Warning**. If you have a valid KEPServerEX Version 5 license but do not have an active Support & Maintenance Agreement, you must contact Kepware's Support Sales team to renew your subscription before continuing with the installation. You can cancel the install to renew your subscription or continue using the KEPServerEX Version 5 product. If you choose to continue, the product will run in time-limited mode (two-hour increments).
4. In **End-User License Agreement**, read the license agreement and accept the terms to continue.

Support Sales Contact

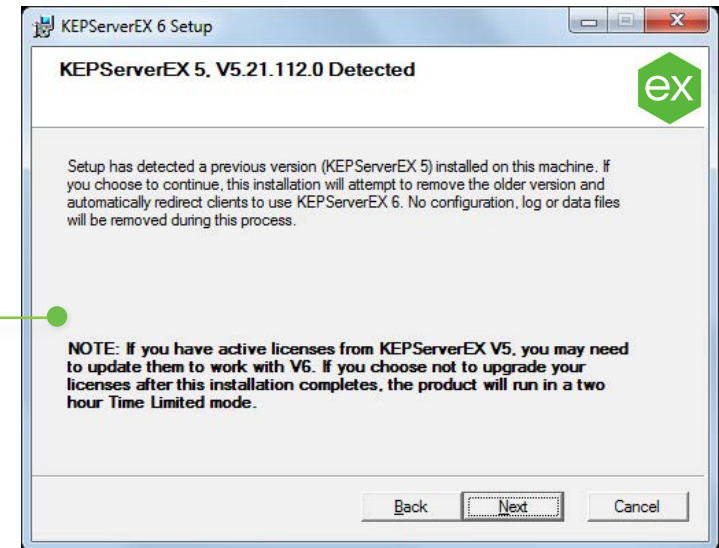
- SupportSales@Kepware.com
- +1 888-KEPWARE x208



5. Setup can detect when a previous version of the server is installed. If you continue with the installation, KEPServerEX V5 will be removed and all clients will be automatically directed to KEPServerEX V6. If you choose to continue, the product will run in time-limited mode (two-hour increments).
6. In **Destination Folder**, accept or change the location of installation. By default, it will be installed into the following location:
C:\Program Files\Kepware\KEPServerEX 5\.
7. In **Application Data Folder**, accept or change the location of installation. The Application Data folder must be accessible to all users, and any user-specified path must be local to the PC. By default, it will be installed into the following location: C:\ProgramData\.
8. In **Shortcuts**, select whether to create a shortcut on the desktop for the KEPServerEX Configuration. When this is not selected, the Configuration will only be accessible through the Start Menu and the server's Administration Menu.

Note

No configuration, log, or data files will be removed during this process.



Scenario Three Installing Version 6 On a Machine with Existing Licenses

9. In **Select Features**, select the features to install. If no features are selected, no drivers, advanced plug-ins, or interfaces will be installed. Please note that when a main component is selected, all of its sub-components will also be installed. To select specific components:
 - Expand the **Communication Drivers** tree to view and select drivers for installation.
 - Expand the **Native Client Interfaces** tree to view and select custom client interfaces.
 - Expand the **Plug-Ins** tree to view and select server-level components.
10. Setup can detect when selected features have external dependencies. Although you can proceed with the installation, you should verify that the dependencies have been met before attempting to use the features during Runtime. For more information, refer to the individual feature's help file.
11. In **Default Application Settings**, specify whether to enable Dynamic Tag addressing by default and whether to allow anonymous login for UA Client Sessions. These settings may be changed later.
12. Finish the installation.
13. The KEPServerEX Version 6 install will automatically launch a "Licensing KEPServerEX Version 6" document containing information on upgrading your Version 5 license to Version 6. The product will run in time-limited mode (two-hour increments) until upgraded.

Note

A feature must be installed before a license for it can be activated.

For detailed technical information and instructions on licensing KEPServerEX Version 6, please see the [License Utility product manual](#). To access additional licensing resources, visit <https://www.kepware.com/support/licensing/>.

Accessing the License Utility Product Manual Offline

The License Utility product manual can be accessed in several ways.

1. Through the KEPServerEX Configuration
 - Click **Help | Server Help**.
 - In the left-hand pane, locate and double-click **License Utility**.
2. Through the License Utility
 - Right-click on the **KEPServerEX** icon located in the **System Tray** and then select **License Utility**.
 - Click **Help**.
3. Through the Administration Menu
 - Right-click on the **KEPServerEX** icon located in the **System Tray** and then select **Help**.
 - In the left-hand pane, locate and double-click **License Utility**.

Have questions? Kepware's experienced Technical Support team provides high priority support to customers with an active Support & Maintenance Agreement. Please have product information and Activation IDs available.

Submit a ticket or check the status of an existing case:

<https://my.kepware.com/mykepware/>.

Pre-sales support with Kepware's Applications Engineers is also available upon request:

presales.support@kepware.com.

Kepware is a software development business of PTC Inc. located in Portland, Maine. Kepware provides a portfolio of software solutions to help businesses connect diverse automation devices and software applications and enable the Industrial Internet of Things. From plant floor to wellsite to windfarm, Kepware serves a wide range of customers in a variety of vertical markets including Manufacturing, Oil & Gas, Building Automation, Power & Utilities, and more. Established in 1995 and now distributed in more than 100 countries, Kepware's software solutions help thousands of businesses improve operations and decision making.

© 2017, PTC Inc. (PTC). All rights reserved. Information described herein is furnished for informational use only, is subject to change without notice, and should not be taken as a guarantee, commitment, or offer by PTC. PTC, the PTC logo, and all PTC product names and logos are trademarks or registered trademarks of PTC and/or its subsidiaries in the United States and other countries. All other product or company names are property of their respective owners. The timing of any product release, including any features or functionality, is subject to change at PTC's discretion.

Last updated 12/18/2017