

Fisher ROC Plus Ethernet Driver

© 2017 PTC Inc. All Rights Reserved.

Table of Contents

Fisher ROC Plus Ethernet Driver	1
Table of Contents	2
Fisher ROC Plus Ethernet Driver	6
Overview	7
Channel Setup	8
Channel Properties — General	12
Channel Properties — Ethernet Communications	12
Channel Properties — Write Optimizations	13
Channel Properties — Advanced	14
Channel Properties — Communication Serialization	14
Device Setup	16
Device Properties — General	18
Device Properties — Scan Mode	19
Device Properties — Timing	20
Device Properties — Auto-Demotion	21
Device Properties — Tag Generation	22
Device Properties — Time Synchronization	24
Device Properties - Communication Parameters	24
Device Properties - Tag Import Settings	25
Device Properties - Communication Specification	26
Device Properties - Operator Identification	27
Device Properties - EFM Meters	27
EFM Attribute Mapping	30
Device Properties — Redundancy	34
Data Types Description	36
TLP Data Type Conversion Process and Examples	38
Address Descriptions	39
ROC Plus Point Types	39
Logical / Location Details	41
User-Defined Point Types	41
User Table Points	42
Binary Field (BIN) Example	42
Statistics Items	42
Error Descriptions	45
Error Reasons	45

Address Validation	45
Address <address> is out of range for the specified device or register.	45
Data type <type> is not valid for device address <address>.	46
Device address <address> contains a syntax error.	46
Device address <address> is read only.	46
Missing address.	46
Automatic Tag Database Generation Messages	47
Error importing CSV tag record <record number>: Address <address> is out of range for the specified device or register.	47
Unable to generate a tag database for device <device>. Reason: <Error reason>.	47
Unable to generate a tag database for device <device>. Reason: Auto tag generation.	48
Unable to generate a tag database for device <device>. Reason: Error while reading from import file.	48
Unable to generate a tag database for device <device>. Reason: Error while reading from ROC system file.	48
Unable to generate a tag database for device <device>. Reason: Failed to open record set.	49
Unable to generate a tag database for device <device>. Reason: Import file <file name> not found.	49
Unable to generate a tag database for device <device>. Reason: Input file is corrupt.	49
Unable to generate a tag database for device <device>. Reason: Input file not found.	50
Unable to generate a tag database for device <device>. Reason: Low memory resources.	50
Unable to generate a tag database for device <device>. Reason: ROC system file <file name> not found.	50
Unable to generate a tag database for device <device>. Reason: System DB file <file name> not found.	50
Device-Specific Messages	51
<Device name> - Failed to read EFM pointer file. <Extended error>.	51
<Device name> - Failed to write EFM pointer file. <Extended error>.	52
Block read for point type <point type>, logical address <logical address>, parameter range <start parameter - end parameter> of device <device name> failed. <Error reason>.	52
Block read for point type <point type>, logical address <logical address>, parameter range <start parameter - end parameter> of device <device name> failed. Parameters are not in the loaded UDP configuration.	53
Device <device> responded with error. (Tag <tag address>) - Details: <error code>.	53
Failed to obtain data block for point type = <point type>, logical address = <address>, starting parameter = <starting parameter>, ending parameter <ending parameter> for device <device>. Error = <ROC error code>.	53
Failed to write data for point type = <point type>, logical address = <address>, parameter = <parameter> for device <device>. Error = <error code>.	54
Multiple batches completed since the previous batch history poll for meter <meter> on device <device>. The last uploaded batch ticket number is <last ticket number> and the current batch ticket number is <current ticket number>.	54

Operator identification failed for device <device name>. <Error reason>.	55
Read for point type <point type>, logical address <logical address>, parameter number <parameter number> of device <device name> failed. <Error reason>.	55
ROC initialization error: Unable to read general configuration.	55
ROC initialization error: Unable to retrieve I/O map.	56
Serialization of EFM data to temporary file <file name> failed. Reason: <file I/O error>.	56
The username or password supplied was not accepted. Error = 6.	56
The username or password supplied was not accepted. Error = 63.	56
Time synchronization with device <device name> failed. <Error reason>.	57
Write failed with error code <error code> for the following tag(s) in device <device name>:<tag list>.	57
Write for the following tags of device <device name> failed: <tag list>. <Error Reason>.	57
Write request rejected on read-only item reference <channel name> <device name> <address>.	58
Device Status Messages	58
<Device> may have incomplete history configured for meter <meter>.	58
Device <device name> is not responding.	58
EFM <type> upload for device <device name> meter <meter name> failed. Framing error.	59
Resetting the EFM cache for device <device>.	59
User Configurable Table Messages	59
Block read for user table <table number>, location range <start location> - <end location> of device <device name> failed. Device returned error code <error code>.	60
Block read for user table <table number>, location range <start location> - <end location> of device <device name> failed. Framing error.	60
Block read for user table <table number>, location range <start location> - <end location> of device <device name> failed. Locations are not configured in the user table.	60
Error parsing user table configuration on device <device name>. User table <table number> contains an invalid user-defined point type, location, or parameter in table location <location address>.	61
Error parsing user table configuration on device <device name>. User table <table number> contains an invalid point type, location, or parameter in table location <location address>.	61
Read for user table <table number>, location <location address> of device <device name> failed. Device returned error code <error code>.	61
Read for user table <table number>, location <location address> of device <device name> failed. Framing error.	62
Read for user table <table number>, location <location address> of device <device name> failed. Location is not configured in the user table.	62
User table configuration upload on device <device name> failed. Device not responding.	62
User table configuration upload on device <device name> failed. Device responded with error code <error code>.	62
User table configuration upload on device <device name> failed. Framing error.	63
User table configuration upload on device <device name> failed. Internal error.	63

User-Defined Point Messages63

Block read for point type <point type>, logical address <logical address>, parameter range <start parameter - end parameter> of device <device name> failed. Parameters are not in the loaded UDP configuration.64

Read for point type <point type>, logical address <logical address>, parameter number <parameter> of device <device name> failed. Parameter is not in the loaded UDP configuration.64

Unable to parse the user-defined point configuration information for point type <point type> on device <device name>.64

User-defined point configuration upload for point type <point type>, logical address <logical address>, parameter number <parameter> of device <device name> failed. <Error reason>.64

ROC Plus Error Codes65

Index67

Fisher ROC Plus Ethernet Driver

Help version 1.025

CONTENTS

[Overview](#)

What is the Fisher ROC Plus Ethernet Driver?

[Channel Setup](#)

How do I configure channels for use with this driver?

[Device Setup](#)

How do I configure a device for use with this driver?

[Data Types Description](#)

What data types does this driver support?

[Tag Generation](#)

How can tags be automatically created for this driver?

[Address Descriptions](#)

How do I address a data location on a Fisher ROC Plus Ethernet device?

[Error Descriptions](#)

What error messages does the Fisher ROC Plus Ethernet Driver produce?

Overview

The Fisher ROC Plus Ethernet Driver supports real-time read and write access and historical Electronic Flow Measurement (EFM) data access in ROC Plus Ethernet controllers. It is ideal for local and remote communications to RTUs, supporting the ability to serialize requests between multiple devices on remote serial networks. Like all EFM-enabled drivers, the Fisher ROC Plus Ethernet Driver also supports time synchronization and the interleaving of real-time and EFM data access. This ensures that no blackouts occur during EFM data collection.

Access real-time data in ROC Plus Ethernet controllers via OPC client applications, including HMI, SCADA, Historians, MES, ERP systems, and more. Export Gas and Liquid EFM data to Flow-Cal, PGAS, databases, and other custom formats. For more information on scheduling and exporting EFM data from ROC Plus Ethernet controllers, refer to the EFM Exporter Plug-In help documentation.

● **Note:** For more information on the Opcodes, Point Types, and Parameters available in the ROC Plus protocol, refer to the device's ROC Plus protocol user manual.

Supported Devices

ROC809
ROC827
ROC809L
ROC827L

● **Note:** The ROC809L and ROC827L models support both Gas and Liquid EFM. The ROC809 and ROC827 models only support Gas EFM.

Supported Protocol

[ROC Plus](#)

Liquid EFM Firmware Requirement

ROC800L (W68258) Firmware version 1.30 or later

User Program Requirements

Liquid Calcs version 1.03.00 (W68259) or later
Batching version 1.03.00 (W68260) or later

Maximum Number of Channels and Devices

The maximum number of supported channels is 1024. The maximum number of devices per channel is 255.

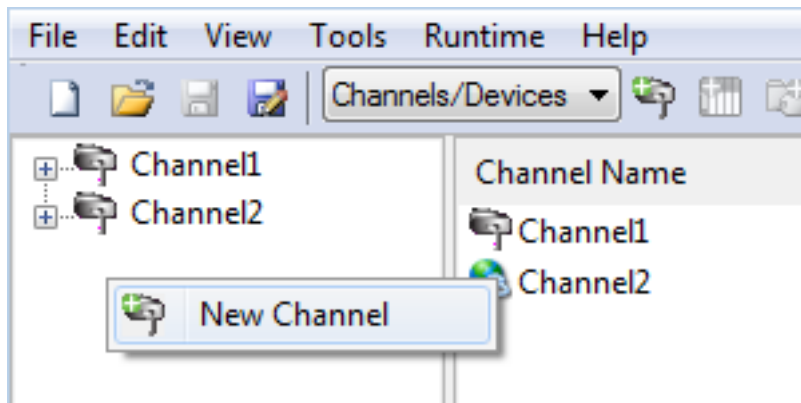
● **Note:** This driver does not support Report by Exception.

Channel Setup

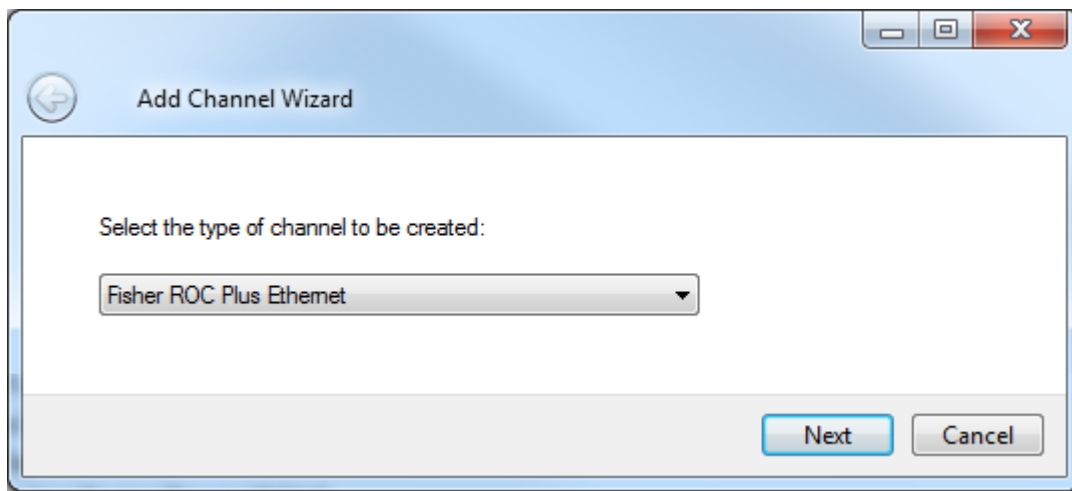
The Fisher ROC Plus Ethernet Driver supports Communication Serialization, which specifies whether data transmissions should be limited to one channel at a time. For more information, refer to "Channel Properties - Advanced" in the server help file. The maximum number of supported channels is 1024.

To create a new channel:

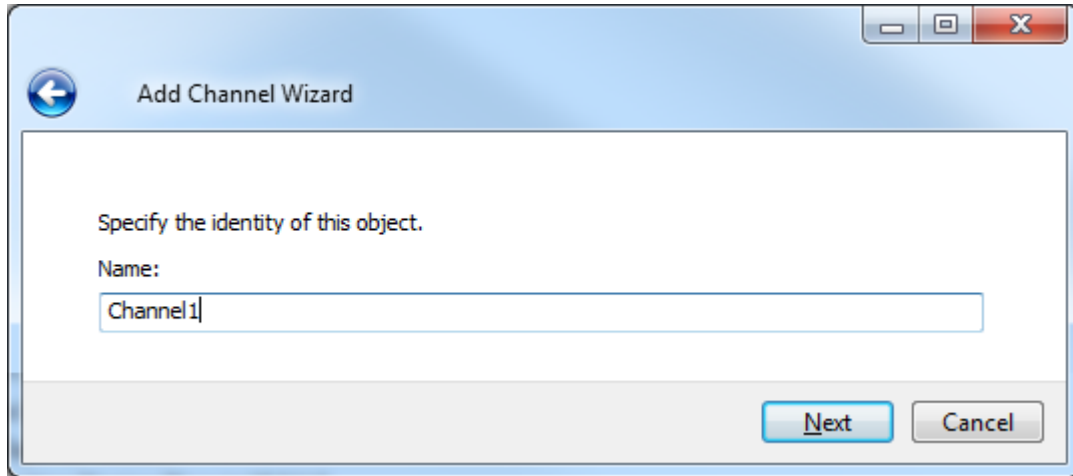
1. In the Project View, right-click and choose **New Channel**.



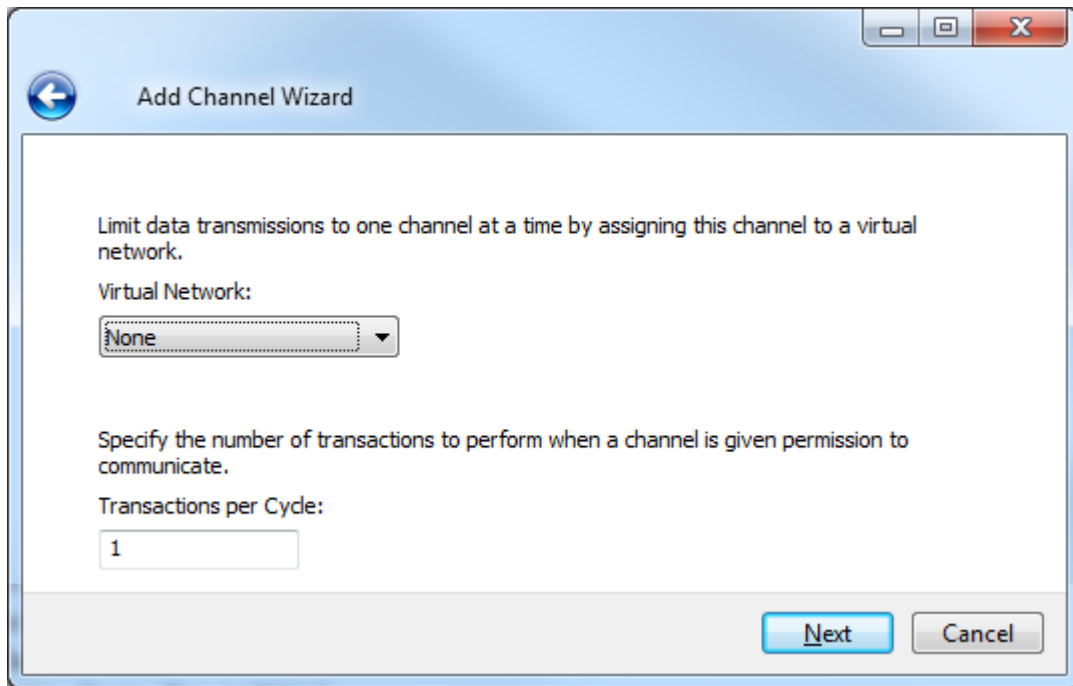
2. From the Device Driver drop-down, select Fisher ROC Plus Ethernet.



3. Click **Next** >.
4. Accept the default channel name or enter a name for the new channel.

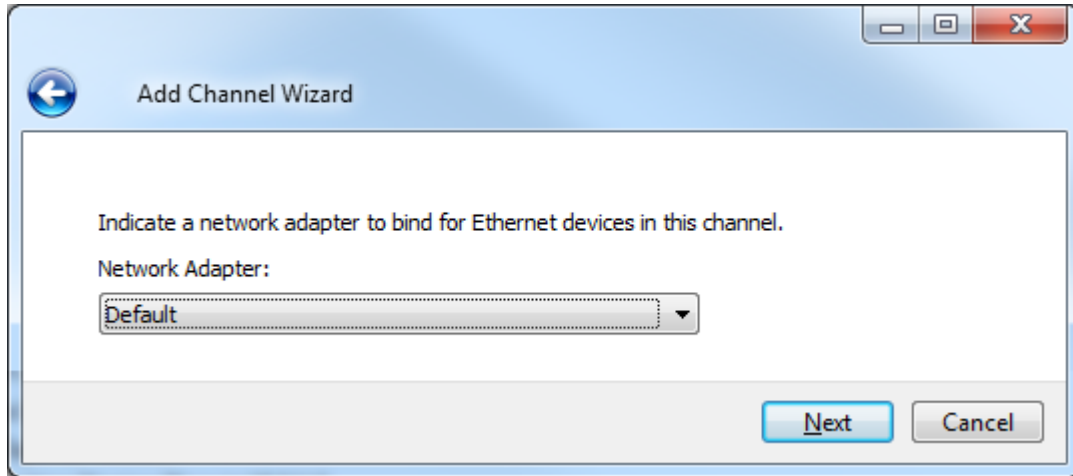


5. Click **Next** >.
6. Configure the channel communication properties.

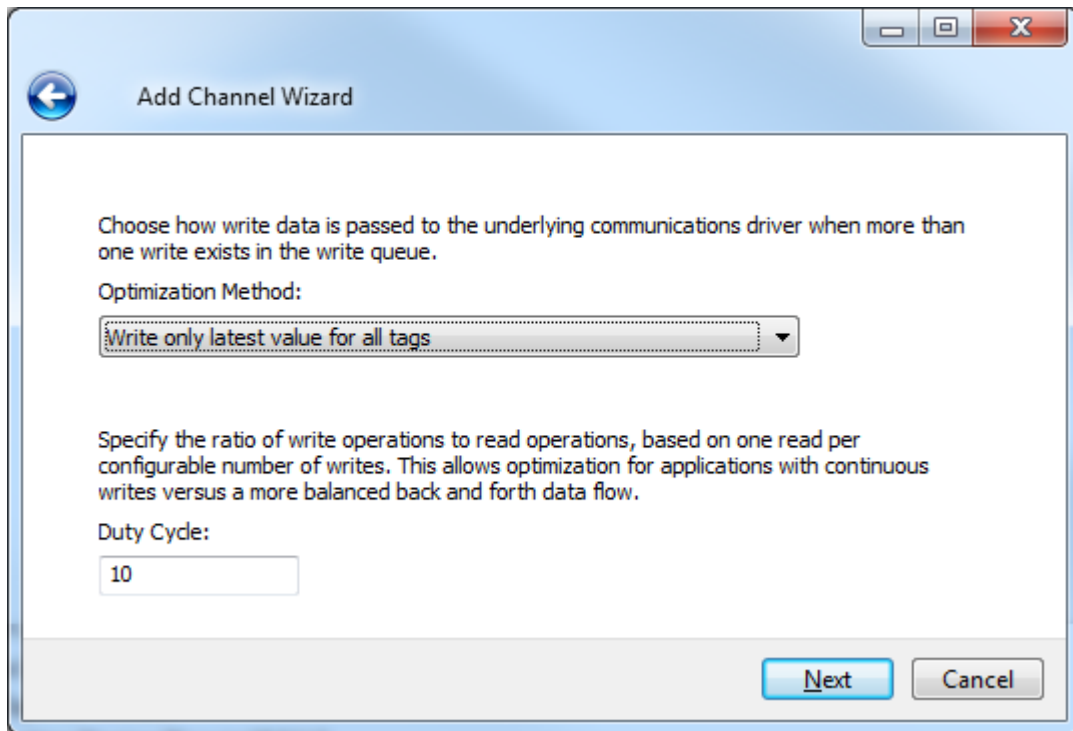


Virtual Network - Select the network name or the default, None
Transactions per cycle - Enter the target number or accept 1 (default).

7. Click **Next** >.
8. Select **Default** or **Intel Pro/1000** (list is based on the detected environment) network interface.



9. Click **Next** >.
10. Configure channel write optimization properties.



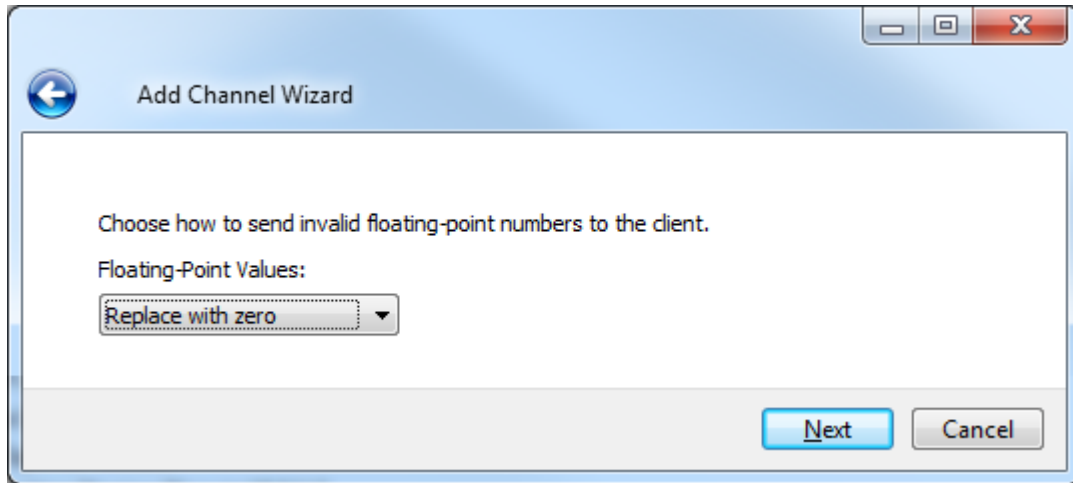
Optimization Method - Accept the default or change the selection by clicking in a radio button.

- Write all values for all tags (most data, most network traffic)
- Write only the latest value for non-Boolean tags (least data, least network traffic)
- Write only the latest value for all tags (key data, moderate network traffic)

Duty Cycle - Accept 10 (default) writes for every 1 read or adjust using the up/down arrows. The range is 1-10.

11. Click **Next** >.

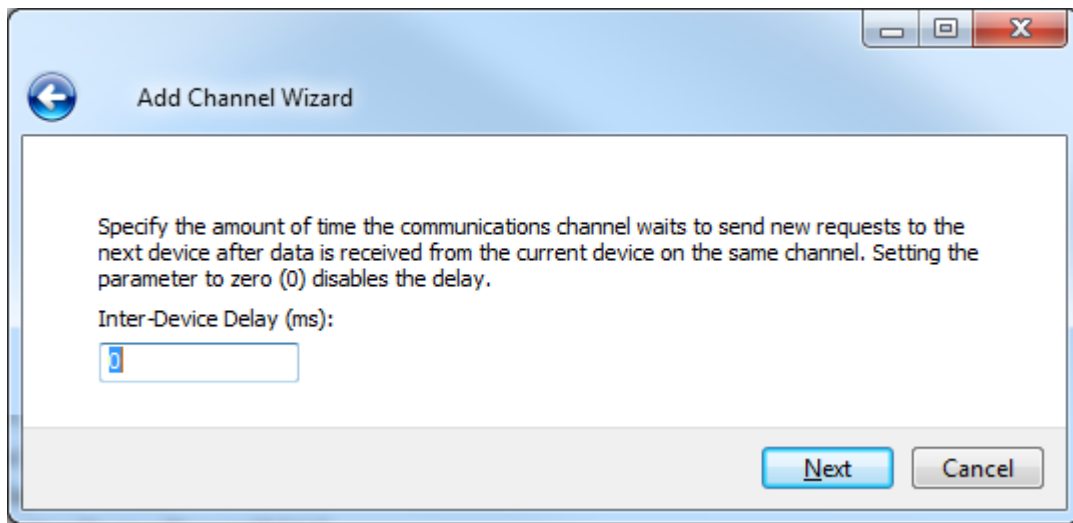
- Utilize the Non-Normalized Float Handling properties to configure how non-normalized values will be handled.



Replaced with zero recognizes invalid outliers and eliminates them by replacing the value with integer zero (default).

Unmodified allows values that are potentially invalid outliers into the data stream.

- Click **Next** >.
- Configure the time, in milliseconds, between requests to devices.



Delay Accept 0 milliseconds (default) or adjust using the up/down arrows. The range is 0-60000 ms.

- Click **Next** >.
- Review the configuration in the Summary wizard step.
- If necessary, use the < **Back** button to return to previous steps to make changes.
- Click **Finish** >.

Channel Properties — General

This server supports the use of simultaneous multiple communications drivers. Each protocol or driver used in a server project is called a channel. A server project may consist of many channels with the same communications driver or with unique communications drivers. A channel acts as the basic building block of an OPC link. This group is used to specify general channel properties, such as the identification attributes and operating mode.

<table border="1"> <tr><td>Property Groups</td></tr> <tr><td>General</td></tr> <tr><td>Write Optimizations</td></tr> <tr><td>Advanced</td></tr> </table>	Property Groups	General	Write Optimizations	Advanced	<table border="1"> <tr><td><input type="checkbox"/> Identification</td></tr> <tr><td>Name</td><td></td></tr> <tr><td>Description</td><td></td></tr> <tr><td>Driver</td><td></td></tr> <tr><td><input type="checkbox"/> Diagnostics</td></tr> <tr><td>Diagnostics Capture</td><td>Disable</td></tr> </table>	<input type="checkbox"/> Identification	Name		Description		Driver		<input type="checkbox"/> Diagnostics	Diagnostics Capture	Disable
Property Groups															
General															
Write Optimizations															
Advanced															
<input type="checkbox"/> Identification															
Name															
Description															
Driver															
<input type="checkbox"/> Diagnostics															
Diagnostics Capture	Disable														

Identification

Name: User-defined identity of this channel. In each server project, each channel name must be unique. Although names can be up to 256 characters, some client applications have a limited display window when browsing the OPC server's tag space. The channel name is part of the OPC browser information.

• For information on reserved characters, refer to "How To... Properly Name a Channel, Device, Tag, and Tag Group" in the server help.

Description: User-defined information about this channel.

• Many of these properties, including Description, have an associated system tag.

Driver: Selected protocol / driver for this channel. This property specifies the device driver that was selected during channel creation. It is a disabled setting in the channel properties.

• **Note:** With the server's online full-time operation, these properties can be changed at any time. This includes changing the channel name to prevent clients from registering data with the server. If a client has already acquired an item from the server before the channel name is changed, the items are unaffected. If, after the channel name has been changed, the client application releases the item and attempts to re-acquire using the old channel name, the item is not accepted. With this in mind, changes to the properties should not be made once a large client application has been developed. Utilize the User Manager to prevent operators from changing properties and restrict access rights to server features.

Diagnostics

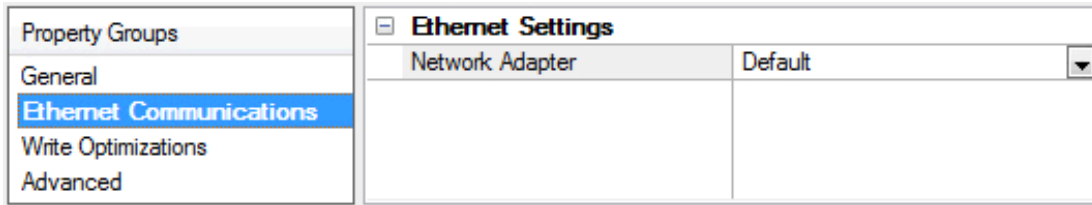
Diagnostics Capture: When enabled, this option makes the channel's diagnostic information available to OPC applications. Because the server's diagnostic features require a minimal amount of overhead processing, it is recommended that they be utilized when needed and disabled when not. The default is disabled.

• **Note:** This property is disabled if the driver does not support diagnostics.

• For more information, refer to "Communication Diagnostics" in the server help.

Channel Properties — Ethernet Communications

Ethernet Communication can be used to communicate with devices.

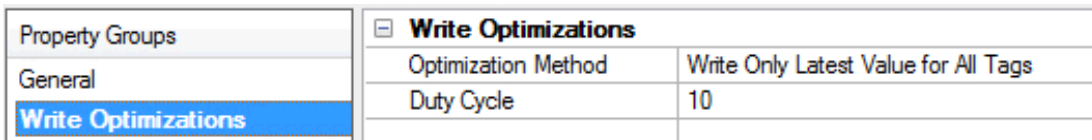


Ethernet Settings

Network Adapter: Specify the network adapter to bind. When Default is selected, the operating system selects the default adapter.

Channel Properties — Write Optimizations

As with any OPC server, writing data to the device may be the application's most important aspect. The server intends to ensure that the data written from the client application gets to the device on time. Given this goal, the server provides optimization properties that can be used to meet specific needs or improve application responsiveness.



Write Optimizations

Optimization Method: controls how write data is passed to the underlying communications driver. The options are:

- **Write All Values for All Tags:** This option forces the server to attempt to write every value to the controller. In this mode, the server continues to gather write requests and add them to the server's internal write queue. The server processes the write queue and attempts to empty it by writing data to the device as quickly as possible. This mode ensures that everything written from the client applications is sent to the target device. This mode should be selected if the write operation order or the write item's content must uniquely be seen at the target device.
- **Write Only Latest Value for Non-Boolean Tags:** Many consecutive writes to the same value can accumulate in the write queue due to the time required to actually send the data to the device. If the server updates a write value that has already been placed in the write queue, far fewer writes are needed to reach the same final output value. In this way, no extra writes accumulate in the server's queue. When the user stops moving the slide switch, the value in the device is at the correct value at virtually the same time. As the mode states, any value that is not a Boolean value is updated in the server's internal write queue and sent to the device at the next possible opportunity. This can greatly improve the application performance.
 - **Note:** This option does not attempt to optimize writes to Boolean values. It allows users to optimize the operation of HMI data without causing problems with Boolean operations, such as a momentary push button.
- **Write Only Latest Value for All Tags:** This option takes the theory behind the second optimization mode and applies it to all tags. It is especially useful if the application only needs to send the latest value to the device. This mode optimizes all writes by updating the tags currently in the write queue before they are sent. This is the default mode.

Duty Cycle: is used to control the ratio of write to read operations. The ratio is always based on one read for every one to ten writes. The duty cycle is set to ten by default, meaning that ten writes occur for each read operation. Although the application is performing a large number of continuous writes, it must be ensured that read data is still given time to process. A setting of one results in one read operation for every write operation. If there are no write operations to perform, reads are processed continuously. This allows optimization for applications with continuous writes versus a more balanced back and forth data flow.

● **Note:** It is recommended that the application be characterized for compatibility with the write optimization enhancements before being used in a production environment.

Channel Properties — Advanced

This group is used to specify advanced channel properties. Not all drivers support all properties; so the Advanced group does not appear for those devices.

Property Groups	<input type="checkbox"/> Non-Normalized Float Handling	
General	Floating-Point Values	Replace with Zero
Write Optimizations	<input type="checkbox"/> Inter-Device Delay	
Advanced	Inter-Device Delay (ms)	0

Non-Normalized Float Handling: Non-normalized float handling allows users to specify how a driver handles non-normalized IEEE-754 floating point data. A non-normalized value is defined as Infinity, Not-a-Number (NaN), or as a Denormalized Number. The default is Replace with Zero. Drivers that have native float handling may default to Unmodified. Descriptions of the options are as follows:

- **Replace with Zero:** This option allows a driver to replace non-normalized IEEE-754 floating point values with zero before being transferred to clients.
- **Unmodified:** This option allows a driver to transfer IEEE-754 denormalized, normalized, non-number, and infinity values to clients without any conversion or changes.

● **Note:** This property is disabled if the driver does not support floating point values or if it only supports the option that is displayed. According to the channel's float normalization setting, only real-time driver tags (such as values and arrays) are subject to float normalization. For example, EFM data is not affected by this setting.

● *For more information on the floating point values, refer to "How To ... Work with Non-Normalized Floating Point Values" in the server help.*

Inter-Device Delay: Specify the amount of time the communications channel waits to send new requests to the next device after data is received from the current device on the same channel. Zero (0) disables the delay.

● **Note:** This property is not available for all drivers, models, and dependent settings.

Channel Properties — Communication Serialization

The server's multi-threading architecture allows channels to communicate with devices in parallel. Although this is efficient, communication can be serialized in cases with physical network restrictions (such as Ethernet radios). Communication serialization limits communication to one channel at a time within a virtual network.

The term "virtual network" describes a collection of channels and associated devices that use the same pipeline for communications. For example, the pipeline of an Ethernet radio is the master radio. All channels using the same master radio associate with the same virtual network. Channels are allowed to communicate each in turn, in a "round-robin" manner. By default, a channel can process one transaction before handing communications off to another channel. A transaction can include one or more tags. If the controlling channel contains a device that is not responding to a request, the channel cannot release control until the transaction times out. This results in data update delays for the other channels in the virtual network.

Property Groups	<input type="checkbox"/> Channel-Level Settings	
General	Virtual Network	None
Serial Communications	Transactions per Cycle	1
Communication Serialization	<input type="checkbox"/> Global Settings	
	Network Mode	Load Balanced

Channel-Level Settings

Virtual Network This property specifies the channel's mode of communication serialization. Options include None and Network 1 - Network 50. The default is None. Descriptions of the options are as follows:

- **None:** This option disables communication serialization for the channel.
- **Network 1 - Network 50:** This option specifies the virtual network to which the channel is assigned.

Transactions per Cycle This property specifies the number of single blocked/non-blocked read/write transactions that can occur on the channel. When a channel is given the opportunity to communicate, this number of transactions attempted. The valid range is 1 to 99. The default is 1.

Global Settings

- **Network Mode:** This property is used to control how channel communication is delegated. In **Load Balanced** mode, each channel is given the opportunity to communicate in turn, one at a time. In **Priority** mode, channels are given the opportunity to communicate according to the following rules (highest to lowest priority):
 - Channels with pending writes have the highest priority.
 - Channels with pending explicit reads (through internal plug-ins or external client interfaces) are prioritized based on the read's priority.
 - Scanned reads and other periodic events (driver specific).

The default is Load Balanced and affects *all* virtual networks and channels.

🔦 Devices that rely on unsolicited responses should not be placed in a virtual network. In situations where communications must be serialized, it is recommended that Auto-Demotion be enabled.

Due to differences in the way that drivers read and write data (such as in single, blocked, or non-blocked transactions); the application's Transactions per cycle property may need to be adjusted. When doing so, consider the following factors:

- How many tags must be read from each channel?
- How often is data written to each channel?
- Is the channel using a serial or Ethernet driver?

- Does the driver read tags in separate requests, or are multiple tags read in a block?
- Have the device's Timing properties (such as Request timeout and Fail after x successive timeouts) been optimized for the virtual network's communication medium?

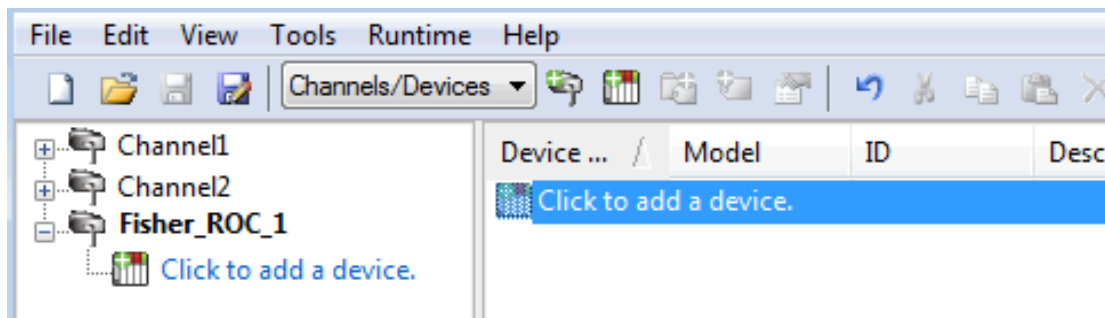
Device Setup

Once at least one [channel is configured](#), devices using the Remote Operation Controllers (ROC) protocol can be added for data collection and monitoring. The maximum number of devices supported on any one channel is 255. Devices should be added to channels organized based on the channel configuration.

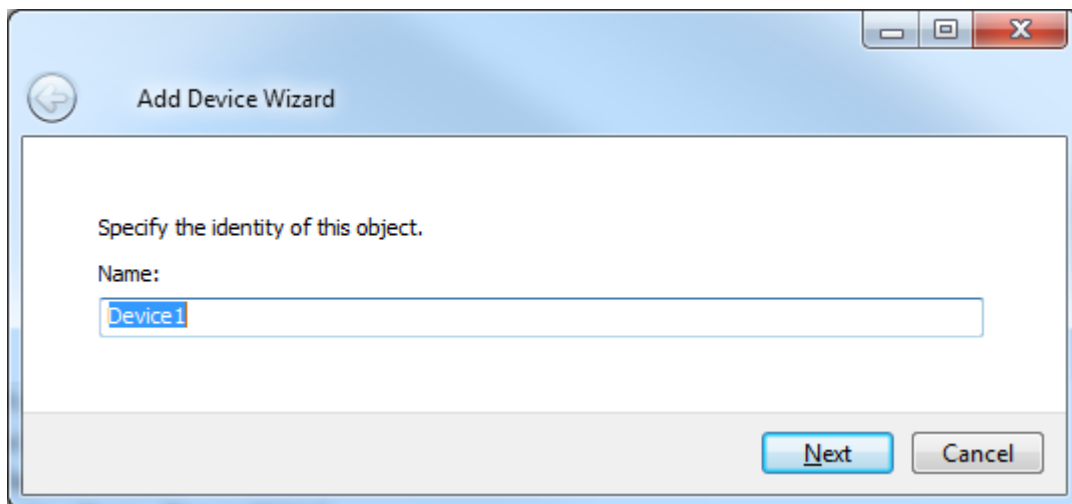
Adding a Device

To add a new device to a channel:

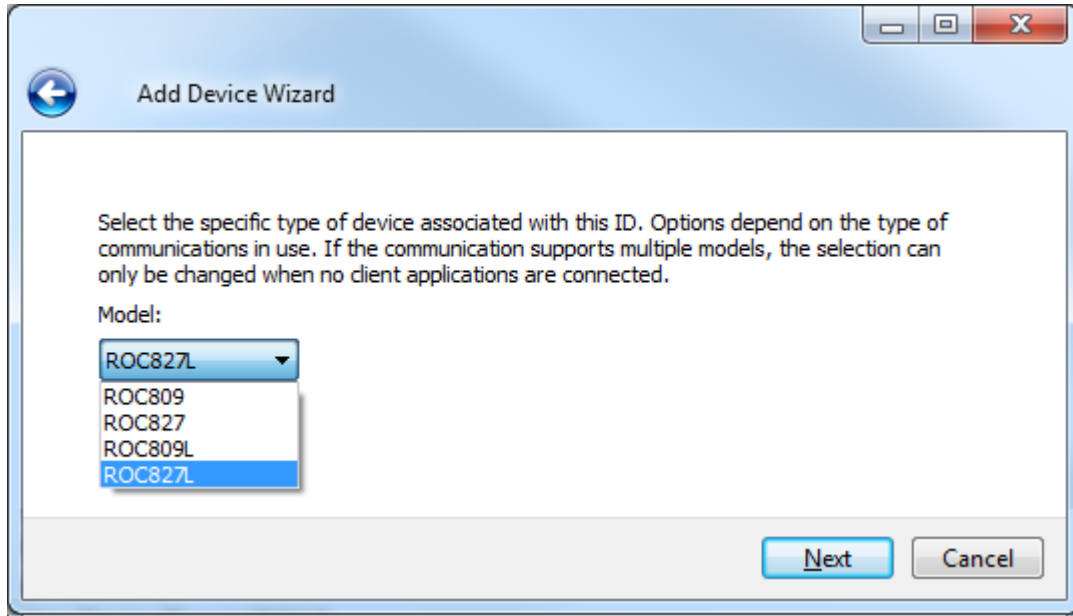
1. In the Project View, select the channel to contain the new device.
2. Select **Click to add a device** or right-click and choose **New Device**.



3. Accept the default channel name or enter a name for the new device.



4. Click **Next** >.
5. Select the correct model for the device.



6. Click **Next** >.
7. Configure the [Scan Mode](#).
8. Click **Next** >.
9. Configure the [Timeouts and Timing](#).
10. Click **Next** >.
11. Configure how communication failure is handled.
12. Click **Next** >.
13. Configure [Tag Generation](#).
14. Click **Next** >.
15. Configure timezone, DST, and synchronization (*see server help*).
16. Click **Next** >.
17. Configure the [Communications Parameters](#).
18. Click **Next** >.
19. Identify and locate existing files to be included (*see [Tag Import Settings](#)*)
20. Click **Next** >.
21. Identify the source and destination addresses (*see [Communication Specification](#)*).
22. Click **Next** >.
23. Configure the authorized user (*see [Operator Identification](#)*) and access control.
24. Click **Next** >.
25. Review the configuration.

26. If necessary, use the < **Back** button to return to previous steps to make changes.
27. Click **Finish** >.

Device Properties — General

A device represents a single target on a communications channel. If the driver supports multiple controllers, users must enter a device ID for each controller.

Property Groups	Identification	
General	Name	
Scan Mode	Description	
Auto-Demotion	Channel Assignment	
Redundancy	Driver	
	Model	
	ID Format	Decimal
	ID	2
	Operating Mode	
	Data Collection	Enable
	Simulated	No

Identification

Name: This property specifies the name of the device. It is a logical user-defined name that can be up to 256 characters long, and may be used on multiple channels.

Note: Although descriptive names are generally a good idea, some OPC client applications may have a limited display window when browsing the OPC server's tag space. The device name and channel name become part of the browse tree information as well. Within an OPC client, the combination of channel name and device name would appear as "ChannelName.DeviceName".

For more information, refer to "How To... Properly Name a Channel, Device, Tag, and Tag Group" in server help.

Description: User-defined information about this device.

Many of these properties, including Description, have an associated system tag.

Channel Assignment: User-defined name of the channel to which this device currently belongs.

Driver: Selected protocol driver for this device. This property specifies the driver selected during channel creation. It is disabled in the channel properties.

Model: This property specifies the specific type of device that is associated with this ID. The contents of the drop-down menu depends on the type of communications driver being used. Models that are not supported by a driver are disabled. If the communications driver supports multiple device models, the model selection can only be changed when there are no client applications connected to the device.

Note: If the communication driver supports multiple models, users should try to match the model selection to the physical device. If the device is not represented in the drop-down menu, select a model that conforms closest to the target device. Some drivers support a model selection called "Open," which allows users to communicate without knowing the specific details of the target device. For more information, refer to the driver help documentation.

ID: This property specifies the device's station / node / identity / address. The type of ID entered depends on the communications driver being used. For many drivers, the ID is a numeric value. Drivers that support a Numeric ID provide users with the option to enter a numeric value whose format can be changed to suit the needs of the application or the characteristics of the selected communications driver. The ID format can be Decimal, Octal, and Hexadecimal. If the driver is Ethernet-based or supports an unconventional station or node name, the device's TCP/IP address may be used as the device ID. TCP/IP addresses consist of four values that are separated by periods, with each value in the range of 0 to 255. Some device IDs are string based. There may be additional properties to configure within the ID field, depending on the driver.

Operating Mode

Data Collection: This property controls the device's active state. Although device communications are enabled by default, this property can be used to disable a physical device. Communications are not attempted when a device is disabled. From a client standpoint, the data is marked as invalid and write operations are not accepted. This property can be changed at any time through this property or the device system tags.

Simulated: This option places the device into Simulation Mode. In this mode, the driver does not attempt to communicate with the physical device, but the server continues to return valid OPC data. Simulated stops physical communications with the device, but allows OPC data to be returned to the OPC client as valid data. While in Simulation Mode, the server treats all device data as reflective: whatever is written to the simulated device is read back and each OPC item is treated individually. The item's memory map is based on the group Update Rate. The data is not saved if the server removes the item (such as when the server is reinitialized). The default is No.

● **Notes:**

1. This System tag (_Simulated) is read only and cannot be written to for runtime protection. The System tag allows this property to be monitored from the client.
2. In Simulation mode, the item's memory map is based on client update rate(s) (Group Update Rate for OPC clients or Scan Rate for native and DDE interfaces). This means that two clients that reference the same item with different update rates return different data.

● Simulation Mode is for test and simulation purposes only. It should never be used in a production environment.

Device Properties — Scan Mode

The Scan Mode specifies the subscribed-client requested scan rate for tags that require device communications. Synchronous and asynchronous device reads and writes are processed as soon as possible; unaffected by the Scan Mode properties.

Property Groups	☐ Scan Mode	
General	Scan Mode	Respect Client-Specified Scan Rate ▼
Scan Mode	Initial Updates from Cache	Disable

Scan Mode: specifies how tags in the device are scanned for updates sent to subscribed clients. Descriptions of the options are:

- **Respect Client-Specified Scan Rate:** This mode uses the scan rate requested by the client.
- **Request Data No Faster than Scan Rate:** This mode specifies the maximum scan rate to be used. The valid range is 10 to 99999990 milliseconds. The default is 1000 milliseconds.
 - **Note:** When the server has an active client and items for the device and the scan rate value is increased, the changes take effect immediately. When the scan rate value is decreased, the changes do not take effect until all client applications have been disconnected.
- **Request All Data at Scan Rate:** This mode forces tags to be scanned at the specified rate for subscribed clients. The valid range is 10 to 99999990 milliseconds. The default is 1000 milliseconds.
- **Do Not Scan, Demand Poll Only:** This mode does not periodically poll tags that belong to the device nor perform a read to get an item's initial value once it becomes active. It is the client's responsibility to poll for updates, either by writing to the `_DemandPoll` tag or by issuing explicit device reads for individual items. *For more information, refer to "Device Demand Poll" in server help.*
- **Respect Tag-Specified Scan Rate:** This mode forces static tags to be scanned at the rate specified in their static configuration tag properties. Dynamic tags are scanned at the client-specified scan rate.

Initial Updates from Cache: When enabled, this option allows the server to provide the first updates for newly activated tag references from stored (cached) data. Cache updates can only be provided when the new item reference shares the same address, scan rate, data type, client access, and scaling properties. A device read is used for the initial update for the first client reference only. The default is disabled; any time a client activates a tag reference the server attempts to read the initial value from the device.

Device Properties — Timing

The device Timing properties allow the driver's response to error conditions to be tailored to fit the application's needs. In many cases, the environment requires changes to these properties for optimum performance. Factors such as electrically generated noise, modem delays, and poor physical connections can influence how many errors or timeouts a communications driver encounters. Timing properties are specific to each configured device.

Property Groups	<input checked="" type="checkbox"/> Communication Timeouts	
General	Connect Timeout (s)	3
Scan Mode	Request Timeout (ms)	5000
Timing	Retry Attempts	3
Auto-Demotion	<input checked="" type="checkbox"/> Timing	
	Inter-Request Delay (ms)	0

Communications Timeouts

Connect Timeout: This property (which is used primarily by Ethernet based drivers) controls the amount of time required to establish a socket connection to a remote device. The device's connection time often takes longer than normal communications requests to that same device. The valid range is 1 to 30 seconds. The default is typically 3 seconds, but can vary depending on the driver's specific nature. If this setting is not supported by the driver, it is disabled.

● **Note:** Due to the nature of UDP connections, the connection timeout setting is not applicable when communicating via UDP.

Request Timeout: This property specifies an interval used by all drivers to determine how long the driver waits for a response from the target device to complete. The valid range is 50 to 9,999,999 milliseconds (167.6667 minutes). The default is usually 1000 milliseconds, but can vary depending on the driver. The

default timeout for most serial drivers is based on a baud rate of 9600 baud or better. When using a driver at lower baud rates, increase the timeout to compensate for the increased time required to acquire data.

Retry Attempts: This property specifies how many times the driver retries a communications request before considering the request to have failed and the device to be in error. The valid range is 1 to 10. The default is typically 3, but can vary depending on the driver's specific nature. The number of retries configured for an application depends largely on the communications environment. This property applies to both connection attempts and request attempts.

Timing

Inter-Request Delay: This property specifies how long the driver waits before sending the next request to the target device. It overrides the normal polling frequency of tags associated with the device, as well as one-time reads and writes. This delay can be useful when dealing with devices with slow turnaround times and in cases where network load is a concern. Configuring a delay for a device affects communications with all other devices on the channel. It is recommended that users separate any device that requires an inter-request delay to a separate channel if possible. Other communications properties (such as communication serialization) can extend this delay. The valid range is 0 to 300,000 milliseconds; however, some drivers may limit the maximum value due to a function of their particular design. The default is 0, which indicates no delay between requests with the target device.

● **Note:** Not all drivers support Inter-Request Delay. This setting does not appear if it is not available.

Device Properties — Auto-Demotion

The Auto-Demotion properties can temporarily place a device off-scan in the event that a device is not responding. By placing a non-responsive device offline for a specific time period, the driver can continue to optimize its communications with other devices on the same channel. After the time period has been reached, the driver re-attempts to communicate with the non-responsive device. If the device is responsive, the device is placed on-scan; otherwise, it restarts its off-scan time period.

Property Groups	Auto-Demotion	
General	Demote on Failure	Enable
Scan Mode	Timeouts to Demote	3
Timing	Demotion Period (ms)	10000
Auto-Demotion	Discard Requests when Demoted	Disable

Demote on Failure: When enabled, the device is automatically taken off-scan until it is responding again.

● **Tip:** Determine when a device is off-scan by monitoring its demoted state using the `_AutoDemoted` system tag.

Timeouts to Demote: Specify how many successive cycles of request timeouts and retries occur before the device is placed off-scan. The valid range is 1 to 30 successive failures. The default is 3.

Demotion Period: Indicate how long the device should be placed off-scan when the timeouts value is reached. During this period, no read requests are sent to the device and all data associated with the read requests are set to bad quality. When this period expires, the driver places the device on-scan and allows for another attempt at communications. The valid range is 100 to 3600000 milliseconds. The default is 10000 milliseconds.

Discard Requests when Demoted: Select whether or not write requests should be attempted during the off-scan period. Disable to always send write requests regardless of the demotion period. Enable to discard writes; the server automatically fails any write request received from a client and does not post a message to the Event Log.

Device Properties — Tag Generation

The automatic tag database generation features make setting up an application a plug-and-play operation. Select communications drivers can be configured to automatically build a list of tags that correspond to device-specific data. These automatically generated tags (which depend on the nature of the supporting driver) can be browsed from the clients.

If the target device supports its own local tag database, the driver reads the device's tag information and uses the data to generate tags within the server. If the device does not natively support named tags, the driver creates a list of tags based on driver-specific information. An example of these two conditions is as follows:

1. If a data acquisition system supports its own local tag database, the communications driver uses the tag names found in the device to build the server's tags.
2. If an Ethernet I/O system supports detection of its own available I/O module types, the communications driver automatically generates tags in the server that are based on the types of I/O modules plugged into the Ethernet I/O rack.

Note: Automatic tag database generation's mode of operation is completely configurable. For more information, refer to the property descriptions below.

Property Groups	Tag Generation	
General	On Property Change	Yes
Scan Mode	On Device Startup	Do Not Generate on Startup
Timing	On Duplicate Tag	Delete on Create
Auto-Demotion	Parent Group	
Tag Generation	Allow Automatically Generated Subgroups	Enable
Tag Import	Create	Create tags
Redundancy		

On Property Change: If the device supports automatic tag generation when certain properties change, the **On Property Change** option is shown. It is set to **Yes** by default, but it can be set to **No** to control over when tag generation is performed. In this case, the **Create tags** action must be manually invoked to perform tag generation.

On Device Startup: This property specifies when OPC tags are automatically generated. Descriptions of the options are as follows:

- **Do Not Generate on Startup:** This option prevents the driver from adding any OPC tags to the tag space of the server. This is the default setting.
- **Always Generate on Startup:** This option causes the driver to evaluate the device for tag information. It also adds tags to the tag space of the server every time the server is launched.
- **Generate on First Startup:** This option causes the driver to evaluate the target device for tag information the first time the project is run. It also adds any OPC tags to the server tag space as needed.

● **Note:** When the option to automatically generate OPC tags is selected, any tags that are added to the server's tag space must be saved with the project. Users can configure the project to automatically save from the **Tools | Options** menu.

On Duplicate Tag: When automatic tag database generation is enabled, the server needs to know what to do with the tags that it may have previously added or with tags that have been added or modified after the communications driver since their original creation. This setting controls how the server handles OPC tags that were automatically generated and currently exist in the project. It also prevents automatically generated tags from accumulating in the server.

For example, if a user changes the I/O modules in the rack with the server configured to **Always Generate on Startup**, new tags would be added to the server every time the communications driver detected a new I/O module. If the old tags were not removed, many unused tags could accumulate in the server's tag space. The options are:

- **Delete on Create:** This option deletes any tags that were previously added to the tag space before any new tags are added. This is the default setting.
- **Overwrite as Necessary:** This option instructs the server to only remove the tags that the communications driver is replacing with new tags. Any tags that are not being overwritten remain in the server's tag space.
- **Do not Overwrite:** This option prevents the server from removing any tags that were previously generated or already existed in the server. The communications driver can only add tags that are completely new.
- **Do not Overwrite, Log Error:** This option has the same effect as the prior option, and also posts an error message to the server's Event Log when a tag overwrite would have occurred.

● **Note:** Removing OPC tags affects tags that have been automatically generated by the communications driver as well as any tags that have been added using names that match generated tags. Users should avoid adding tags to the server using names that may match tags that are automatically generated by the driver.

Parent Group: This property keeps automatically generated tags from mixing with tags that have been entered manually by specifying a group to be used for automatically generated tags. The name of the group can be up to 256 characters. This parent group provides a root branch to which all automatically generated tags are added.

Allow Automatically Generated Subgroups: This property controls whether the server automatically creates subgroups for the automatically generated tags. This is the default setting. If disabled, the server generates the device's tags in a flat list without any grouping. In the server project, the resulting tags are named with the address value. For example, the tag names are not retained during the generation process.

● **Note:** If, as the server is generating tags, a tag is assigned the same name as an existing tag, the system automatically increments to the next highest number so that the tag name is not duplicated. For example, if the generation process creates a tag named "AI22" that already exists, it creates the tag as "AI23" instead.

Create: Initiates the creation of automatically generated OPC tags. If the device's configuration has been modified, **Create tags** forces the driver to reevaluate the device for possible tag changes. Its ability to be accessed from the System tags allows a client application to initiate tag database creation.

● **Note:** **Create tags** is disabled if the Configuration edits a project offline.

Device Properties — Time Synchronization

This group is used to specify the device's time zone and time synchronization properties. It primarily applies to time stamped data or information from battery-powered devices at remote locations where the device time may deviate (causing issues with the time-stamped data). To prevent this problem from occurring, users can specify that the server synchronize the device time.

Property Groups	<input type="checkbox"/> Time Zone	
General	Time Zone	(UTC-05:00) Eastern Time (US & Canada)
Scan Mode	Respect Daylight Saving Time	No
Timing	<input type="checkbox"/> Synchronization	
Auto-Demotion	Time Sync Method	Absolute
Time Synchronization	Sync Absolute	12:00:00 AM

● **Note:** Not all drivers and models support all options.

Time Zone: This property specifies the device's time zone. To ignore the time zone, select one of the first four options in the list (which do not have an offset). The default is the time zone of the local system.

● **Note:** The driver uses this property both when synching the device time and when converting EFM timestamps from the device to UTC time.

Respect Daylight Saving Time: Select Yes to follow Daylight Saving Time offset when synching the device time. Select No to ignore Daylight Saving Time. Only time zones that observe Daylight Saving Time will be affected. The default is No (disabled).

● **Note:** When enabled, the time of the device is adjusted by +1 hour for Daylight Saving Time (in the spring), and adjusted by -1 hour after Daylight Saving Time (in the fall).

Method: This property specifies the method of synchronization. Options include Disabled, Absolute, and Interval. The default is Disabled. Descriptions of the options are as follows:

- **Disabled:** No synchronization.
- **Absolute:** Synchronizes to an absolute time of day specified through the Time property (appears only when Absolute is selected).
- **Interval:** Synchronizes on startup and every number of minutes specified through the Sync Interval property (appears only when Interval is selected). The default is 60 minutes.
- **OnPoll:** Synchronizes when poll is completed (applicable only to EFM devices).

Device Properties - Communication Parameters

Communications Parameters are defined as a device is configured through the New Device wizard and can also be modified after the device has been added.

Property Groups	<input type="checkbox"/> Communications Parameters	
General	Device Address	192.168.1.1
Scan Mode	Port	4000
Timing	Close Idle Connection	Yes
Time Synchronization	Idle Time Before Close	15
Communications Parameters		

Descriptions of the parameters are as follows:

- **Device address** specifies the IP address or host name for communication with the device.
- **Port** specifies the destination endpoint number for communication with the device. The default is port 4000. The range is 0-65535.
- **Close idle connection** enables (Yes) / disables (No) the ability to terminate a connection that is no longer active. The default is Yes.
- **Idle time before close (sec)** defines the delay, in seconds, between a connection becoming idle and being terminated. The default is 15 seconds. The range is 0-99 seconds.

Device Properties - Tag Import Settings

A tag database can be created based on the device's configuration file or a ROCLINK 800 project file by bringing those tags into the project with an import. Tag Import settings are defined as a device is added and configured through the New Device wizard and can also be modified after the device has been added. To define the Tag Import settings for a new device, follow the steps for [Adding a Device](#). To modify settings on a defined device; select the device, right-click, select **Properties**, and select the **Tag Import Settings** group.

<table border="1"> <tr><td>Property Groups</td></tr> <tr><td>General</td></tr> <tr><td>Time Synchronization</td></tr> <tr><td>Communications Parameters</td></tr> <tr><td>Tag Import Settings</td></tr> <tr><td>Communication Specification</td></tr> <tr><td>Operator Identification</td></tr> <tr><td>EFM Meters</td></tr> </table>	Property Groups	General	Time Synchronization	Communications Parameters	Tag Import Settings	Communication Specification	Operator Identification	EFM Meters	<table border="1"> <tr><td colspan="2">Tag Import Settings</td></tr> <tr><td>Import Method</td><td>Offline - from Import File</td></tr> <tr><td>Use Legacy Tag Names</td><td>Yes</td></tr> <tr><td colspan="2">Offline Settings</td></tr> <tr><td>Tag Import File</td><td></td></tr> <tr><td>ROC System File</td><td></td></tr> <tr><td>System DB File</td><td></td></tr> <tr><td>Display Descriptions</td><td>No</td></tr> </table>	Tag Import Settings		Import Method	Offline - from Import File	Use Legacy Tag Names	Yes	Offline Settings		Tag Import File		ROC System File		System DB File		Display Descriptions	No
Property Groups																									
General																									
Time Synchronization																									
Communications Parameters																									
Tag Import Settings																									
Communication Specification																									
Operator Identification																									
EFM Meters																									
Tag Import Settings																									
Import Method	Offline - from Import File																								
Use Legacy Tag Names	Yes																								
Offline Settings																									
Tag Import File																									
ROC System File																									
System DB File																									
Display Descriptions	No																								

Descriptions of the parameters are as follows:

- **Import method:** This option specifies the import method. Options include Online - from Device and Offline - from Import File. The default setting is Online - from Device. Descriptions of the options are as follows:
 - **Online - from Device:** This method automatically creates tags by polling the device for its configuration and I/O data.
 - **Offline - from Import File:** This method automatically creates tags from a project file created in ROCLINK 800.
- **Use legacy tag names:** When set to Yes, Automatic Tag Database Generation creates tags with names consistent with the tags created in prior versions of the server. When unchecked, Automatic Tag Database Generation creates tags with names consistent with the current version of the server. The default setting is Yes.
 - **Note:** For more information, refer to "Legacy vs. Non-Legacy Tag Names" below.
- **Tag import file:** When pressed, this button invokes a dialog for locating the *.800 file that was created using the ROCLINK800 software. The file path may also be entered manually in the space provided.
- **ROC system file:** When pressed, this button invokes a dialog for locating the *.mdb file. This file is usually named "ROC.mdb," and resides in the same folder where the ROCLINK 800 software is installed. The file path may also be entered manually in the space provided.

- **System DB file:** When pressed, this button invokes a dialog for locating the *.mdw file. This file is usually named "ROCLINK.mdw," and resides in the same folder where the ROCLINK 800 software is installed. The file path may also be entered manually in the space provided.
- **Display Descriptions:** When set to Yes, this option includes the tag descriptions from the ROCLINK 800 master database.

Legacy vs. Non-Legacy Tag Names

For information on how legacy and non-legacy tag names are automatically generated based on the "Use legacy tag names" option, refer to the table below.

Tag Type	Mode	Tag Name	Tag Address
Non-Boolean	Legacy	IPAddress_137_0	137-0.1
	Non-Legacy	IP Address-137 (T137,L0,P1)	137-0.1
Boolean (.Bit)	Legacy	HighAlarm_41_0	41-0.16:2
	Non-Legacy	High Alarm-41 (T41,L0,P16) Bit 2	41-0.16:2

• See Also: [Tag Generation](#)

Device Properties - Communication Specification

Communication Specification settings are defined as a device is added and configured through the New Device wizard and can also be modified after the device has been added. To define the Communication Specification settings for a new device, follow the steps for [Adding a Device](#). To modify settings on a defined device; select the device, right-click, select **Properties**, and select the **Communication Specification** group.

Property Groups	<input type="checkbox"/> Destination	
General	Device Address	240
Scan Mode	Device Group	240
Timing	<input type="checkbox"/> Source	
Auto-Demotion	Host Address	1
Tag Generation	Host Group	1
Time Synchronization	<input type="checkbox"/> Read Optimization	
Communications Parameters	Use OpCode 180 For Read Requests	No
Tag Import Settings		
Communication Specificat...		
Operator Identification		

Descriptions of the parameters are as follows:

- **Device address:** Specify the device number of the remote ROC device. The valid range is 1 to 255. The default setting is 240.
- **Device group:** Specify the group number of the remote ROC device. The valid range is 1 to 255. The default setting is 240.
- **Host address:** Specify the ROC unit number of the server. The valid range is 1 to 255. The default setting is 1.
- **Host group:** Specify the ROC group number of the server. The valid range is 1 to 255. The default setting is 1.

- **Use Opcode 180 for read requests:** This option should be used if few parameters from each point type and logical address are typically used, as it yields more efficient communication. If set to No, the driver uses Opcode 167 to read entire point type logical addresses in one transaction. The default is No.

Device Properties - Operator Identification

This dialog is used to specify the operator identification values to be used when logging into the ROC Plus device during initialization. To view or change the operator identification settings after the device has been added, right-click on the device and select **Properties | Operator Identification** group.

Property Groups	[-] Operator Identification	
Tag Import Settings	Username	LOI
Communication Specification	Password	*****
Operator Identification	Enable Access Level	No

Descriptions of the parameters are as follows:

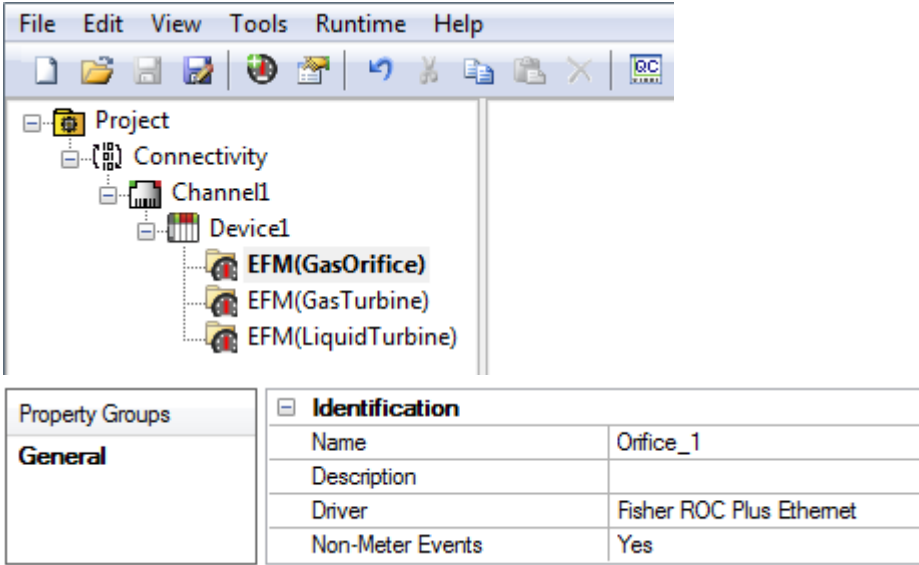
- **Username:** Specify the authorized account identity. Three characters (as set in the device) are required.
- **Password:** Specify the operator password. Four numeric characters can be entered. The valid range is 0000 to 9999.
- **Enable Access Level:** When set to Yes, this parameter specifies that the ROC Plus device has defined access levels. The valid range is 0 to 5. The default setting is No.
- **Access Level:** Specify access level to use. The valid range is 0 to 5. This parameter is not available unless the Enable Access Level parameter is set to yes.

Device Properties - EFM Meters

EFM Meter settings can be added to a device. The Fisher ROC Plus Ethernet driver supports Gas Orifice, Gas Turbine, and Liquid Turbine meters. Meter groups for the three meter types are automatically created with the device. Meters may be created for each meter group type once the device has been configured. To define the EFM Meter settings for a new device, click the + symbol beside the device to expand the listing of meter groups. Right-click the meter group and select **New Meter**. A new meter is added below the selected meter group. The total number of meters for the Gas groups is 12 combined (any combination of Orifice and Turbine). The total number of Liquid Turbine meters supported is 6. To edit the meter; right-click the meter and select **Properties**.

Important:

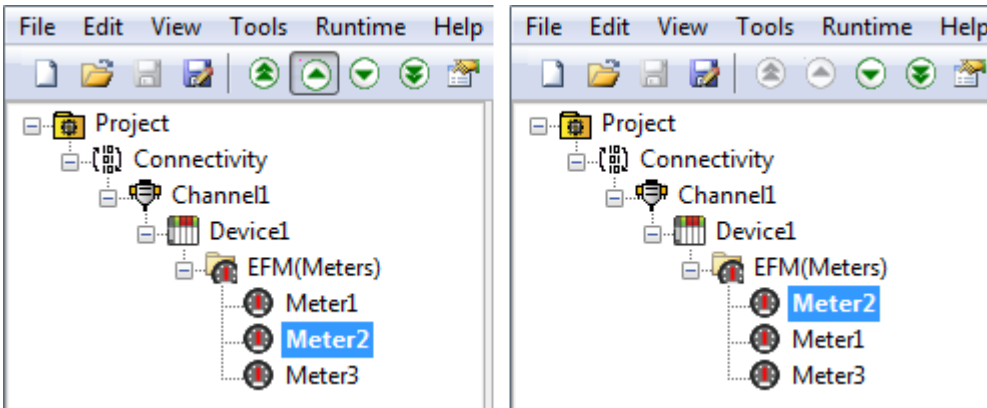
The meter order in the EFM Meter List should match the order of the meters in ROCLINK 800.



Descriptions of the parameters are as follows:

- **Name:** Specify the meter name. Each meter must be assigned a unique name. The default setting is Meter_1.
- **Description:** This parameter can be used to provide a short description of the meter.
- **Driver:** This parameter indicates the current driver (Fisher ROC Plus Ethernet). It cannot be modified.
- **Non-Meter Events:** Specify whether non-meter EFM events are provided to EFM Exporters. The default setting is Yes.

To modify the meter order, select a meter from the project view and use the arrow icons in the toolbar accordingly.

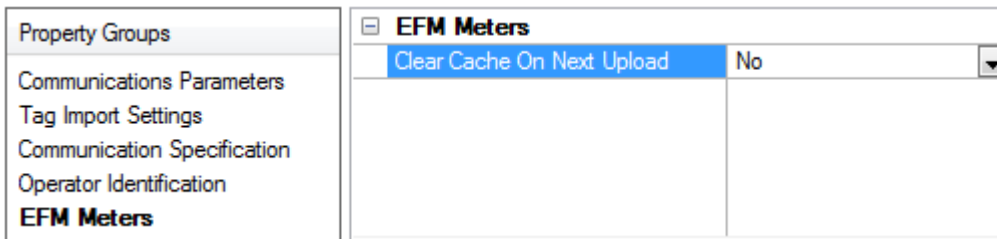


Note:

The Identification parameters of the meter group cannot be edited and are provided for informational purposes only.

Clear Cache on Next Upload

Users have the option to clear any cached EFM data from the device during the next upload. This feature also removes pointer files, which are used to track EFM uploads to prevent uploading the same records twice. All EFM data is re-uploaded. Once the cache is cleared, this parameter is automatically disabled. To enable this option, open **Device Properties | EFM Meters** and select Yes for the **Clear cache on next upload** property. The default setting is No.



Liquid Meter Record Timestamp Tolerance

Some ROC+ Liquid EFM meter configurations store station and meter data in separate history segments. The Fisher ROC Plus Ethernet Driver uploads the data from both segments and merges it into a single historical record based on timestamp.

Important:

Data from each segment is not merged if the timestamps from each record are more than two seconds apart. Data from each segment is included in different records; however, these records are most likely incomplete.

See Also:

[ROC and ROC+ Gas EFM Configuration Mapping](#)

EFM Attribute Mapping

The tables below describe the mapping of TLPs to attributes used by the EFM Exporter Plug-in. This mapping is not user-configurable and provided for reference only.

Gas Configuration Mapping

n = orifice run number or turbine run number

s = station number

h = history segment number

EFM Config Attribute	ROC+ Orifice TLP	ROC+ Turbine TLP
meter_id	113-n.0	115-n.0
pressure_base	112-s.13	
temp_base	112-s.14	112-s.14
live_analysis	112-s.24	112-s.24
calculation_method	112-s.1	112-s.1
pipe_diameter	113-n.12	
pipe_ref_temp	113-n.13	
static_pressure_tap	113-n.3	
unit	112-s.4	
orifice_plate_size	113-n.15	
orifice_ref_temp	113-n.16	
dp_low_flow_cutoff	113-n.20	115-n.22
atmospheric_pressure	112-s.16	112-s.16
btu	112-s.22	112-s.22
specific_gravity	112-s.23	112-s.23
viscosity	113-n.18	
specific_heats	113-n.19	
pipe_material	113-n.14	
orifice_material	113-n.17	
btu_base	112-n.21	112-n.21
compressibility_calc	112-n.3	
static_pressure_type	113-n.2	115-n.2
static_pressure_taps	113-n.3	
k_factor		115-n.11
fixed_factor	113-n.34	115-n.21
co2	112-s.27	112-s.27
n2	112-s.26	112-s.26
c1	112-s.28	112-s.28
c2	112-s.29	112-s.29
c3	112-s.30	112-s.30

EFM Config Attribute	ROC+ Orifice TLP	ROC+ Turbine TLP
isoc4	112-s.32	112-s.32
nc4	112-s.31	112-s.31
isoc5	112-s.34	112-s.34
c5	112-s.33	112-s.33
c6	112-s.35	112-s.35
c7	112-s.36	112-s.36
c8	112-s.37	112-s.37
c9	112-s.38	112-s.38
c10	112-s.39	112-s.39
o2	112-s.43	112-s.43
h2o	112-s.41	112-s.41
h2s	112-s.40	112-s.40
he	112-s.42	112-s.42
h2	112-s.45	112-s.45
co	112-s.44	112-s.44
ar	112-s.62	112-s.62
contract_hour	124-h.8	124-h.8

Gas History Mapping

n = meter number

EFM Attribute	Orifice TLP	Turbine TLP
flow_time	114-n.28	116-n.21
avg_diff_pressure	113-n.26	113-n.26
avg_pressure	113-n.28	115-n.16
avg_temp	113-n.30	115-n.18
avg_extension	114-n.4	114-n.4
c_prime	114-n.12	114-n.12
pulses	116-n.9	116-n.9
raw_volume	116-n.31	116-n.31
flowing_condition_factor	116-n.8	116-n.8
total_volume (accumulated)	114-n.23	116-n.16
total_volume (daily)	114-n.0	116-n.0
total_volume (hourly)	114-n.2	116-n.2
total_energy (accumulated)	114-n.33	116-n.26
total_energy (daily)	114-n.1	116-n.1
total_energy (hourly)	114-n.3	116-n.3
avg_btu	112-n.22	112-n.22

EFM Attribute	Orifice TLP	Turbine TLP
avg_specific_gravity	112-n.23	112-n.23
avg_co2	112-n.27	112-n.27
avg_n2	112-n.26	112-n.26
avg_c1	112-n.28	112-n.28
avg_c2	112-n.29	112-n.29
avg_c3	112-n.30	112-n.30
avg_isoc4	112-n.32	112-n.32
avg_nc4	112-n.31	112-n.31
avg_isoc5	112-n.34	112-n.34
avg_neoc5	112-n.33	112-n.33
avg_c6	112-n.35	112-n.35
avg_c7	112-n.36	112-n.36
avg_o2	112-n.43	112-n.43
avg_h2o	112-n.41	112-n.41
avg_h2s	112-n.42	112-n.42
specific_heat_ratio	113-n.19	113-n.19
viscosity	113-n.18	113-n.18

Liquid Mapping

n = meter number

l = logical number is dependent on input TLP

EFM Attribute	TLP
meter_id	204-n.0
meter_serial_number	204-n.3
liquid_calculation_method	204-n.7
liquid_product_name	201-n.0
liquid_density_meter_factor	202-n.9
temp_low_alarm_setpoint (Analog Input)	103-l.24
temp_high_alarm_setpoint (Analog Input)	103-l.25
temp_calibrated_range_low (Analog Input)	103-l.13
temp_calibrated_range_high (Analog Input)	103-l.17
temp_low_alarm_setpoint (RTD Input)	106-l.25
temp_high_alarm_setpoint (RTD Input)	106-l.26
temp_calibrated_range_low (RTD Input)	106-l.14
temp_calibrated_range_high (RTD Input)	106-l.18
temp_high_alarm_setpoint (Thermocouple Input)	107-l.11
temp_calibrated_range_low (Thermocouple Input)	107-l.13

EFM Attribute	TLP
temp_high_alarm_setpoint (MVS Input)	103-l.25
temp_calibrated_range_low (MVS Input)	103-l.13
low_flow_cutoff_set_point	204-n.36
atmospheric_pressure	200-0.16
liquid_totalizer_digits	91-0.56
static_pressure_units	200-0.4
temp_units	200-0.5
density_units	200-0.6
volume_units	200-0.10
mass_units	200-0.11
meter_mf_kf_curve_type	204-n.76
linear_meter_factor	204-n.75
linear_meter_k_factor	204-n.74
contract_hour	200-0.89

Liquid History Mapping

n = meter number

EFM Attribute	TLP
flow_time	204-n.245
liquid_observed_density	204-n.22
liquid_density_temperature	202-n.6
liquid_density_pressure	202-n.8
liquid_uncorrected_density	202-n.3
liquid_meter_flow_density	204-n.21
liquid_meter_temperature	204-n.34
liquid_meter_pressure	204-n.33
liquid_indicated_volume	204-n.145
liquid_iv_index_end	204-n.145
liquid_gross_volume	204-n.146
liquid_gv_index_end	204-n.146
liquid_gross_standard_volume	204-n.147
liquid_gsv_index_end	204-n.147
liquid_mass	204-n.150
liquid_mass_index_end	204-n.150
liquid_net_standard_volume	204-n.148
liquid_nsv_index_end	204-n.148

EFM Attribute	TLP
liquid_sw_volume	204-n.149
liquid_sw_index_end	204-n.149
liquid_sw_percent	204-n.35
liquid_sw_correction	204-n.40
liquid_pulses	204-n.184
liquid_pulse_index_end	204-n.184
liquid_densitometer_factor	202-n.9
meter_factor	204-n.75
k_factor	204-n.74
liquid_equilibrium_vapor_pressure	204-n.243
ctl	204-n.44
cpl	204-n.45
ctpl	204-n.46
ccf	204-n.39
co2	201-n.119
n2	201-n.117
c1	201-n.105
c2	201-n.106
c3	201-n.107
ic4	201-n.109
nc4	201-n.108
ic5	201-n.111
nc5	201-n.110
neoc5	201-n.104
c6	201-n.112
c7	201-n.113
c8	201-n.124
c9	201-n.125
c10	201-n.126
ethylene	201-n.114
propylene	201-n.115
o2	201-n.118
h2o	201-n.128
h2s	201-n.120
he	201-n.127

Device Properties — Redundancy

Property Groups	<input type="checkbox"/> Redundancy	
General	Secondary Path	...
Scan Mode	Operating Mode	Switch On Failure
Timing	Monitor Item	
Redundancy	Monitor Interval (s)	300
	Return to Primary ASAP	Yes

Redundancy is available with the Media-Level Redundancy Plug-In.

• *Consult the website, a sales representative, or the user manual for more information.*

Data Types Description

Data Types	Description
Boolean	Single bit
Byte	Unsigned 8-bit value bit 0 is the low bit bit 7 is the high bit
Char	Signed 8-bit value bit 0 is the low bit bit 6 is the high bit bit 7 is the sign bit
Date	The number of seconds since Jan 1 1970 @ 00:00:00 Example Date format:YYYY-MM-DDTHH:MM:SS.000 2000-01-01T12:30:45.000
DWord	Unsigned 32-bit value bit 0 is the low bit bit 31 is the high
DWord TLP	32-bit value: Point 'T'ype, 'L'ogical (or point number), and 'P'arameter number* Three bytes are used, but the top byte is not. <ul style="list-style-type: none"> • The type refers to the point type number.** • The location/logical number refers to individual points. • The parameter is a number assigned to each piece of data contained in a given point type. Example 557158: BIN = 00001000 10000000 01100110. 01100110 = Point Type 102, 10000000 = Location 128, 00001000 = Parameter 8. The resulting TLP is 102-128.8
Float	32-bit floating point value bit 0 is the low bit bit 31 is the high bit
LongLong	Signed 64-bit value Bit 0 is the low bit Bit 62 is the high bit Bit 63 is the sign bit
QWord	Unsigned 64-bit value Bit 0 is the low bit Bit 63 is the high bit
Short	Signed 16-bit value bit 0 is the low bit bit 14 is the high bit bit 15 is the sign
String	A linear group of ASCII characters with preserved white space (1 byte per character)

Data Types	Description
Word	Unsigned 16-bit value bit 0 is the low bit bit 15 is the high bit
Word HOURMINUTE	Point Type 100, parameters 3-5 are HOURMINUTE. This driver represents this data type as Word. Length: 2 Bytes. Time is listed as a decimal based number. The first two digits represent the hour and the last two digits represent the minute. Range: 9999, 0-23 for 2 MS Digits; 0-59 for 2 LS Digits Special Meanings: 9999 = Disabled

*For more information, refer to [Logical/Location Details](#).

**For more information, refer to [ROC Plus Point Types](#).

See Also:

[TLP Data Type Conversion Process and Examples](#)

TLP Data Type Conversion Process and Examples

The Fisher ROC / ROC Plus TLP data type is represented by the driver as a DWord. TLP values can be written and read from device tags; however some data conversion must be applied for the value to be correct when received by the device. The TLP data type is used frequently throughout the various point type parameters and primarily used within Point Type 99. The following examples are useful for converting a decimal tag value communicated with the device.

DWord TLP Example:

- Decimal Tag Value = 557158
- Binary tag value = 0000 1000 1000 0000 0110 0110

TLP Value Equivalent:

- 0110 0110 = Point Type 102
- 1000 0000 = Logical/Location 128
- 0000 1000 = Parameter 8

DWord TLP Example:

- Decimal Tag Value = 2162786
- Binary tag value = 0010 0001 0000 0000 0110 0010

TLP Value Equivalent:

- 0110 0010 = Point Type 98
- 0000 0000 = Logical/Location 0
- 0010 0001 = Parameter 33

DWord TLP Example:

- Decimal Tag Value = 264905
- Binary tag value = 0000 0100 0000 1010 1100 1001

TLP Value Equivalent:

- 1100 1001 = Point Type 201
- 0000 1010 = Logical/Location 10
- 0000 0100 = Parameter 4

[Data Type Descriptions](#)

[ROC Plus Point Types](#)

[Logical Location Details](#)

[User-Defined Point Types](#)

[Binary Field \(BIN\) Example](#)

Address Descriptions

ROC addresses are divided first by point type, logical address, and then by parameter index within the point type. The general format is *T-L.P*, where:

- **T:** The Point Type
- **L:** The Logical Address
- **P:** The Parameter Index

Parameters are blocked together on point type and logical address to a size up to 230 bytes. Some parameters are broken down into individual bits. Those parameters are addressed as *T-L.P:B*, where:

- **B:** The Bit Offset

For example, the address 1-50.3:2 indicates the following:

- **Point Type:** 1
- **Logical Address:** 50
- **Parameter:** 3
- **Bit Offset:** 2

Note: For a detailed listing of all point types' access, data type, length, and description, refer to the device's ROC Plus protocol user manual. For more information on ROC addressing, select a link from the list below.

[Logical / Location Details](#)

[ROC Plus Point Types](#)

[User-Defined Point Types](#)

[Binary Field \(BIN\) Example](#)

[TLP Data Type Conversion Process and Examples](#)

ROC Plus Point Types

For a detailed listing of all point types' parameters, access, data type, length, and description; refer to the device's ROC Plus protocol user manual.

Point Type	Description
82	Virtual Discrete Outputs
85	HART
91	System Variables
92	Login Parameters
93	License Key Information
94	User C++ Configuration
95	Communication Ports
96	FST Parameters
97	FST Register Tags
98	Soft Point Parameters
99	Configurable Opcode Table
100	Power Control Parameters

Point Type	Description
101	Discrete Inputs
102	Discrete Outputs
103	Analog Inputs
104	Analog Outputs
105	Pulse Inputs
106	RTD
107	Thermocouple
108	Multi-Variable Sensor
109	System Analog Inputs
110	PID Control Parameters
111	Sampler/Odorizer Parameters
112	Station Parameters
113	Orifice Meter Run Configuration
114	Orifice Meter Run Values
115	Turbine Meter Run Configuration
116	Turbine Meter Run Values
117	Modbus Configuration Parameters
118	Modbus Register to TLP Mapping
119	Modbus Event, Alarm and History Table
120	Modbus Master Modem Configuration
121	Modbus Master Table
122	DS800 Configuration
123	Security -- Group Configuration
124	History Segment Configuration
125	History Segment 0 Point Configuration
126	History Segment 1 Point Configuration
127	History Segment 2 Point Configuration
128	History Segment 3 Point Configuration
129	History Segment 4 Point Configuration
130	History Segment 5 Point Configuration
131	History Segment 6 Point Configuration
132	History Segment 7 Point Configuration
133	History Segment 8 Point Configuration
134	History Segment 9 Point Configuration
135	History Segment 10 Point Configuration
136	ROC Clock
137	Internet Configuration Parameters
138	User C++ Host Parameters
139	Smart I/O Module Information

Point Type	Description
140	Alternating Current Input / Output
141	Advanced Pulse Module
142	History Segment 11
143	History Segment 12
144	Transactional History Configuration
145	Transactional History Point Configuration
177	IEC62591 Commissioned List

Logical / Location Details

Within each point type, individual points are referenced by a logical number or a location. The location used by the ROC Plus protocol for point types 101 to 109 is based on a physical input or output (I/O) module and point location. All other point types use a logical number and are numbered in sequence.

● **Note:** The "L" in "TLP" references the logical / location scheme.

Physical Point Numbers 1 to 160

Point types 101 through 109 have location numbers for the field I/O. For diagnostic inputs, the scheme is as follows:

- Location numbers 16 to 160 are assigned to field I/O. For example, if there was an I/O module in slot 1 with 4 points on it, they would be points 16 through 19.
- Location numbers 0 to 15 are assigned to the system I/O. For example, the five diagnostic points in a ROC800-Series would be 0 through 4.

Logical Point Numbers 0 to 127

For all other point types (except 101-109), the logical number is 0 to x , where x is one less than the total number of points that exist for that point type. For example, the 16 PIDs would be logical numbers 0 through 15.

● **Note:** For a detailed listing of all point types' access, data type, length, and description, refer to the device's ROC Plus protocol user manual.

User-Defined Point Types

User-Defined Points (UDP) make user program data available to ROCLINK and OPC clients. They are generally used for configuration purposes. When creating a UDP in the server, the server Configuration always sets the data type to its default. The data type is later read live from the device.

● **Important:** Users must reinitialize the server after upgrading the user program on a device; otherwise, the server cannot access the new points available in the upgraded user program.

Supported Device Models

All ROC800 Series devices.

Supported User-Defined Point Range

60 to 78

196 to 254

Troubleshooting

To avoid potential issues, users should do the following:

- Verify that the point type is within the supported UDP range.
- If a client attempts to write to a UDP type when no UDP type tags have been read since the server started, the write may fail with a Type Mismatch error. Always complete a read on UDP type tags before a write is attempted.
- Verify that the point type exists in one of the user programs installed on the device.
- Check the Event Log for the following error message, which occurs if the server fails to parse the UDP configuration: **Unable to parse the user-defined point configuration information for point type <point type> on device <device name>.**

User Table Points

User tables, also called Opcode tables, provide the ability to map any Point Type parameters to tables in the device. This driver has the ability to read and write data points in the user tables using Opcodes 10 and 11. The syntax for user table tags is:

user_table-n.m where *n* is the user table number and *m* is the data point or location within that table.

The user table number and location number are zero-based.

For example, the first location in the first user table is: user_table-0.0.

Important: Users must increment the version number of the user table when making changes to the table configuration. Failure to do so when making changes to the table while the server is actively reading user table tags results in bad quality tags or erroneous data.

Supported User Table Point Range

user_table-0.0 to user_table-15.43

Binary Field (BIN) Example

The table below shows an example alarm code from an Analog Input Point Type. This is used to demonstrate how a binary parameter is returned. A "1" in any bit indicates that it is active or enabled.

	Response Code	Bit
Low Alarm	0	0
Low Low Alarm	0	1
High Alarm	0	2
High High Alarm	0	3
Rate Alarm	0	4
Not Used	0	5
Point Fail Alarm	0	6
Scanning Disabled Alarm	1	7

Statistics Items

Statistical items use data collected through additional diagnostics information, which is not collected by default. To use statistical items, Communication Diagnostics must be enabled. To enable Communication

Diagnostics, right-click on the channel in the Project View and click **Properties | Enable Diagnostics**. Alternatively, double-click on the channel and select **Enable Diagnostics**.

Channel-Level Statistics Items

The syntax for channel-level statistics items is `<channel>._Statistics`.

Note: Statistics at the channel level are the sum of those same items at the device level.

Item	Data Type	Access	Description
_CommFailures	DWord	Read/Write	The total number of times communication has failed (or has run out of retries).
_ErrorResponses	DWord	Read/Write	The total number of valid error responses received.
_ExpectedResponses	DWord	Read/Write	The total number of expected responses received.
_LastResponseTime	String	Read Only	The time at which the last valid response was received.
_LateData	DWord	Read/Write	The total number of times that a driver tag's data update occurred later than expected (based on the specified scan rate).
_MsgResent	DWord	Read/Write	The total number of messages sent as a retry.
_MsgSent	DWord	Read/Write	The total number of messages sent initially.
_MsgTotal	DWord	Read Only	The total number of messages sent (both _MsgSent + _MsgResent).
_PercentReturn	Float	Read Only	The proportion of expected responses (Received) to initial sends (Sent) as a percentage.
_PercentValid	Float	Read Only	The proportion of total valid responses received (_TotalResponses) to total requests sent (_MsgTotal) as a percentage.
_Reset	Bool	Read/Write	Resets all diagnostic counters. Writing to the _Reset Tag causes all diagnostic counters to be reset at this level.
_RespBadChecksum	DWord	Read/Write	The total number of responses with checksum errors.
_RespTimeouts	DWord	Read/Write	The total number of messages that failed to receive any kind of response.
_RespTruncated	DWord	Read/Write	The total number of messages that received only a partial response.
_TotalResponses	DWord	Read Only	The total number of valid responses received (_ErrorResponses + _ExpectedResponses).

Statistical items are not updated in simulation mode (see *device general properties*).

Device-Level Statistics Items

The syntax for device-level statistics items is `<channel>.<device>._Statistics`.

Item	Data Type	Access	Description
_CommFailures	DWord	Read/Write	The total number of times communication has failed (or has

Item	Data Type	Access	Description
			run out of retries).
_ErrorResponses	DWord	Read/Write	The total number of valid error responses received.
_ExpectedResponses	DWord	Read/Write	The total number of expected responses received.
_LastResponseTime	String	Read Only	The time at which the last valid response was received.
_LateData	DWord	Read/Write	The total number of times that a driver tag's data update occurred later than expected (based on the specified scan rate).
_MsgResent	DWord	Read/Write	The total number of messages sent as a retry.
_MsgSent	DWord	Read/Write	The total number of messages sent initially.
_MsgTotal	DWord	Read Only	The total number of messages sent (both _MsgSent + _MsgResent).
_PercentReturn	Float	Read Only	The proportion of expected responses (Received) to initial sends (Sent) as a percentage.
_PercentValid	Float	Read Only	The proportion of total valid responses received (_TotalResponses) to total requests sent (_MsgTotal) as a percentage.
_Reset	Bool	Read/Write	Resets all diagnostic counters. Writing to the _Reset Tag causes all diagnostic counters to be reset at this level.
_RespBadChecksum	DWord	Read/Write	The total number of responses with checksum errors.
_RespTimeouts	DWord	Read/Write	The total number of messages that failed to receive any kind of response.
_RespTruncated	DWord	Read/Write	The total number of messages that received only a partial response.
_TotalResponses	DWord	Read Only	The total number of valid responses received (_ErrorResponses + _ExpectedResponses).

Statistical items are not updated in simulation mode (*see device general properties*).

Error Descriptions

The following categories of messages may be generated. Click on a link for a list of related messages.

[Address Validation](#)

[Automatic Tag Database Generation Messages](#)

[Device-Specific Messages](#)

[Device Status Messages](#)

[User Configurable Table Messages](#)

[User-Defined Point Messages](#)

See Also:

[ROC Plus Error Codes](#)

[Error Reasons](#)

Error Reasons

Error Reason	Possible Cause	Solution
Device not responding	<i>For more information, see Device <device name> is not responding.</i>	<i>For more information, see Device <device name> is not responding.</i>
Device responded with error code	The ROC Plus device responded with an error code.	<i>For more information, see ROC Plus Error Codes.</i>
Framing error	The response packet from the ROC device has data fields that are not as per the protocol.	This error is very rare. If encountered, users should check with the manufacturer to ensure that the ROC Plus device is consistent with the protocol.
Operator identification error	The operator identification login (with user ID and password) failed.	Refer to the Event Log message that corresponds to the operator identification failure.

Address Validation

The following messages may be generated. Click on the link for a description of the message.

[Address <address> is out of range for the specified device or register.](#)

[Data type <type> is not valid for device address <address>.](#)

[Device address <address> contains a syntax error.](#)

[Device address <address> is read only.](#)

[Missing address.](#)

Address <address> is out of range for the specified device or register.

Error Type:

Warning

Possible Cause:

A tag address that has been specified statically references a location that is beyond the range of supported locations for the device.

Solution:

Verify that the address is correct; if it is not, re-enter it in the client application.

Data type <type> is not valid for device address <address>.

Error Type:

Warning

Possible Cause:

A tag address that has been specified statically has been assigned an invalid data type.

Solution:

Modify the requested data type in the client application.

Device address <address> contains a syntax error.

Error Type:

Warning

Possible Cause:

A tag address that has been specified statically contains one or more invalid characters.

Solution:

Re-enter the address in the client application.

Device address <address> is read only.

Error Type:

Warning

Possible Cause:

A tag address that has been specified statically has a requested access mode that is not compatible with what the device supports for that address.

Solution:

Change the access mode in the server application.

Missing address.

Error Type:

Warning

Possible Cause:

A tag address that has been specified statically has no length.

Solution:

Re-enter the address in the server application.

Automatic Tag Database Generation Messages

The following messages may be generated. Click on a link for a description of that message.

[Error importing CSV tag record <record number>: Address <address> is out of range for the specified device or register.](#)

[Unable to generate a tag database for device <device>. Reason: <Error reason>.](#)

[Unable to generate a tag database for device <device>. Reason: Auto tag generation.](#)

[Unable to generate a tag database for device <device>. Reason: Error while reading from import file.](#)

[Unable to generate a tag database for device <device>. Reason: Error while reading from ROC system file.](#)

[Unable to generate a tag database for device <device>. Reason: Failed to open record set.](#)

[Unable to generate a tag database for device <device>. Reason: Import file <file name> not found.](#)

[Unable to generate a tag database for device <device>. Reason: Input file is corrupt.](#)

[Unable to generate a tag database for device <device>. Reason: Input file not found.](#)

[Unable to generate a tag database for device <device>. Reason: Low memory resources.](#)

[Unable to generate a tag database for device <device>. Reason: ROC system file <file name> not found.](#)

[Unable to generate a tag database for device <device>. Reason: System DB file <file name> not found.](#)

Error importing CSV tag record <record number>: Address <address> is out of range for the specified device or register.

Error Type:

Warning

Possible Cause:

An imported tag address specifies a location that is beyond the range of supported locations for the device.

Solution:

Verify that the address is correct; if it is not, re-enter it in the file being imported.

Unable to generate a tag database for device <device>. Reason: <Error reason>.

Error Type:

Warning

Possible Cause:

The error occurred due to the specified error reason.

Solution:

The solution depends on the specified error reason.

See Also:[Error Reasons](#)

Unable to generate a tag database for device <device>. Reason: Auto tag generation.

Error Type:

Serious

Possible Cause:

1. The connection between the device and the host PC is intermittent.
2. The communication parameters for the connection are incorrect.

Solution:

1. Verify the cabling between the PC and the device.
2. Verify that the specified communication parameters match those of the device.

Unable to generate a tag database for device <device>. Reason: Error while reading from import file.

Error Type:

Warning

Possible Cause:

1. The tag import file (*.800) is corrupt.
2. The specified file was not created using the ROCLINK 800 software.

Solution:

1. Ensure that the project is pointing to the correct import file.
2. Re-create the import file using the ROCLINK 800 software and then re-try the import.

Unable to generate a tag database for device <device>. Reason: Error while reading from ROC system file.

Error Type:

Warning

Possible Cause:

1. The ROC system file (*.mdb) is corrupt.
2. The specified file was not created using the ROCLINK 800 software.

Solution:

1. Ensure that the project is pointing to the correct ROC system file.
2. Re-install the ROCLINK 800 software to re-install the system file. Then re-try the import.

Unable to generate a tag database for device <device>. Reason: Failed to open record set.

Error Type:

Warning

Possible Cause:

1. The project file is corrupt or does not exist.
2. The location of the ROC.MDB and/or ROCLINK.MDW files have been specified incorrectly.

Solution:

In the server project, right-click on the device and select **Properties**. Open the **Tag Import Settings** tab to check the name of the project file to import.

• See Also: [Tag Generation](#) and [Tag Import Settings](#)

Unable to generate a tag database for device <device>. Reason: Import file <file name> not found.

Error Type:

Warning

Possible Cause:

The import file cannot be found.

Solution:

Ensure that the tag import file (*.800) is present in the location specified in the Tag Import Settings tab of device properties. In the server project, right-click on the device and select **Properties**. Open the **Tag Import Settings** tab to review the settings and check the import file. This file must be accessible to the server's runtime.

Unable to generate a tag database for device <device>. Reason: Input file is corrupt.

Error Type:

Warning

Possible Cause:

The import file is corrupt.

Solution:

In the server project, right-click on the device and select **Properties**. Open the **Tag Import Settings** tab to review the settings and check the import file. If necessary, re-export the project file from within ROCLINK800.

• See Also: [Tag Generation](#) and [Tag Import Settings](#)

Unable to generate a tag database for device <device>. Reason: Input file not found.

Error Type:

Warning

Possible Cause:

The import file cannot be located.

Solution:

In the server project, right-click on the device and select **Properties**. Open the **Tag Import Settings** tab to review the name of the project file to import.

• *See Also:* [Tag Generation](#) and [Tag Import Settings](#)

Unable to generate a tag database for device <device>. Reason: Low memory resources.

Error Type:

Warning

Possible Cause:

The memory required for Automatic Tag Generation could not be allocated. The process is aborted.

Solution:

Close any unused applications and/or increase the amount of virtual memory. Try again.

Unable to generate a tag database for device <device>. Reason: ROC system file <file name> not found.

Error Type:

Warning

Possible Cause:

The ROC system file cannot be found.

Solution:

Ensure that the ROC system file (*.mdb) is present in the location specified in the Tag Import Settings tab of device properties. In the server project, right-click on the device and select **Properties**. Open the **Tag Import Settings** tab to review the settings and check the import file.

Unable to generate a tag database for device <device>. Reason: System DB file <file name> not found.

Error Type:

Warning

Possible Cause:

The system database file cannot be found.

Solution:

Ensure that the system database file (*.mdw) is present in the location specified in the Tag Import Settings tab of device properties. This file must be accessible to the server's runtime. In the server project, right-click on the device and select **Properties**. Open the **Tag Import Settings** tab to review the settings and check the import file.

Device-Specific Messages

The following messages may be generated. Click on the link for a description of the message.

[<Device name> - Failed to read EFM pointer file. <Extended error>.](#)

[<Device name> - Failed to write EFM pointer file. <Extended error>.](#)

[Block read for point type <point type>, logical address <logical address>, parameter range <start parameter - end parameter> of device <device name> failed. <Error reason>.](#)

[Device <device> responded with error. \(Tag <tag address>\)-Details: <error code>.](#)

[Failed to obtain data block for point type = <point type>, logical address = <address>, starting parameter = <starting parameter>, ending parameter <ending parameter> for device <device>. Error = <ROC error code>.](#)

[Failed to write data for point type = <point type>, logical address = <address>, parameter = <parameter> for device <device>. Error = <error code>.](#)

[Multiple batches completed since the previous batch history poll for meter <meter> on device <device>. The last uploaded batch ticket number is <last ticket number> and the current batch ticket number is <current ticket number>.](#)

[Operator identification failed for device <device name>. <Error reason>.](#)

[Read for point type <point type>, logical address <logical address>, parameter number <parameter number> of device <device name> failed. <Error reason>.](#)

[ROC initialization error: Unable to read general configuration.](#)

[ROC initialization error: Unable to retrieve I/O map.](#)

[Serialization of EFM data to temporary file <file name> failed. Reason: <file I/O error>.](#)

[Time synchronization with device <device name> failed. <Error reason>.](#)

[The username or password supplied was not accepted. Error = 6.](#)

[The username or password supplied was not accepted. Error = 63.](#)

[Write request rejected on read-only item reference <channel name> <device name> <address>.](#)

[Write failed with error code <error code> for the following tag\(s\) in device <device name>:<tag list>.](#)

[Write for the following tags of device <device name> failed: <tag list>. <Error reason>.](#)

<Device name> - Failed to read EFM pointer file. <Extended error>.

Error Type:

Warning

Extended Error:

When supplied by the operating system, this describes the file error that occurred.

Possible Cause:

1. A permission error was encountered when the EFM pointer cache was read.
2. The EFM pointer cache file is corrupt.

Solution:

The driver automatically generates a new EFM pointer file; however, the server re-polls (uploading all EFM data) during the next EFM poll for meters in the device.

Note:

For more information, refer to the extended error.

<Device name> - Failed to write EFM pointer file. <Extended error>.

Error Type:

Warning

Extended Error:

When supplied by the operating system, this describes the file error that occurred.

Possible Cause:

1. The disk is full.
2. A permission error was encountered when the EFM pointer cache was written.

Solution:

The server attempts to update the EFM pointer file periodically, in addition to when the server is shutdown. If the pointer file cannot be written, the server re-polls (uploading all EFM data) during the next EFM poll for meters in the device.

Note:

For more information, refer to the extended error.

Block read for point type <point type>, logical address <logical address>, parameter range <start parameter - end parameter> of device <device name> failed. <Error reason>.

Error Type:

Serious

Possible Cause:

The error occurred due to the specified error reason.

Solution:

The solution depends on the specified error reason.

See Also:

[Error Reasons](#)

Block read for point type <point type>, logical address <logical address>, parameter range <start parameter - end parameter> of device <device name> failed. Parameters are not in the loaded UDP configuration.

Error Type:

Serious

Possible Cause:

The user program that is associated with the specified parameters has been upgraded to a newer version.

Solution:

Reinitialize the server to access the new parameters available in the upgraded user program.

Device <device> responded with error. (Tag <tag address>) - Details: <error code>.

Error Type:

Serious

Possible Cause:

1. The connection between the device and the host PC is intermittent.
2. The communication parameters for the connection are incorrect.
3. The value written is out of range.
4. The write was performed while in an incorrect setup area.

Solution:

1. Check the cabling between the PC and the device.
2. Verify that the specified communication parameters match those of the device.

See Also:

[Device Setup](#)

Failed to obtain data block for point type = <point type>, logical address = <address>, starting parameter = <starting parameter>, ending parameter <ending parameter> for device <device>. Error = <ROC error code>.

Error Type:

Serious

Possible Cause:

1. An invalid tag address is used for the point in block.
2. The device is not responding.

Solution:

1. Consult the ROC error code reference for further information regarding the error code.
2. Verify the cabling between the PC and the device.
3. Confirm that all tags within this block exist on the device.

See Also:

[ROC Plus Error Codes](#)

Failed to write data for point type = <point type>, logical address = <address>, parameter = <parameter> for device <device>. Error = <error code>.

Error Type:

Serious

Possible Cause:

1. The address is incorrect.
2. The unit does not support the particular address point.
3. The privileges for the logged-in user do not permit this operation.

Solution:

1. Consult the ROC error code reference for further information regarding the error code.
2. Correct the address.
3. Confirm that the address is supported by the controller in use.
4. Supply an operator identification with sufficient privileges.

See Also:

[ROC Plus Error Codes](#)

Multiple batches completed since the previous batch history poll for meter <meter> on device <device>. The last uploaded batch ticket number is <last ticket number> and the current batch ticket number is <current ticket number>.

Error Type:

Warning

Possible Cause:

Multiple batches have completed since the last time EFM batch data was polled for the specified meter.

Solution:

Fisher ROC+ devices only store the latest complete batch and current batch data. The meter should be polled at a rate such that there is only a single batch completed between polls.

Operator identification failed for device <device name>. <Error reason>.

Error Type:

Serious

Possible Cause:

The error occurred due to the specified error reason.

Solution:

The solution depends on the specified error reason.

See Also:

[Error Reasons](#)

[Operator Identification](#)

Read for point type <point type>, logical address <logical address>, parameter number <parameter number> of device <device name> failed. <Error reason>.

Error Type:

Serious

Possible Cause:

The error occurred due to the specified error reason.

Solution:

The solution depends on the specified error reason.

See Also:

[Error Reasons](#)

ROC initialization error: Unable to read general configuration.

Error Type:

Serious

Possible Cause:

The driver may not be receiving a response from the device.

Solution:

1. Ensure the device is physically connected and powered on.
2. Check that the COM port is working and configured properly at the channel level (in the server).
3. Check the device-level operator identification and address specification settings and verify that they are correct.

See Also:

[Operator Identification](#)

[Communication Specification](#)

ROC initialization error: Unable to retrieve I/O map.

Error Type:

Serious

Possible Cause:

Access to the I/O map has been restricted for the current user.

Solution:

Check the operator identification settings (such as username, password, and access level) and verify that they are correct.

See Also:

[Operator Identification](#)

Serialization of EFM data to temporary file <file name> failed. Reason: <file I/O error>.

Error Type:

Warning

Possible Cause:

1. The driver was unable to create the specified file directory.
2. The driver was unable to access the specified file.

Solution:

1. Verify that the disk has sufficient disk space.
2. Verify user permissions for the specified file directory.

The username or password supplied was not accepted. Error = 6.

Error Type:

Serious

Possible Cause:

An access level has been enabled on the device but not in the driver.

Solution:

Check the operator identification settings and ensure that the Enable Access Level checkbox is checked.

See Also:

[Operator Identification](#)

The username or password supplied was not accepted. Error = 63.

Error Type:

Serious

Possible Cause:

The access level that has been enabled on the device is lower than the operator's access level.

Solution:

Check the operator identification settings and ensure that the operator's access level is less than or equal to the access level enabled in the device.

See Also:

[Operator Identification](#)

Time synchronization with device <device name> failed. <Error reason>.

Error Type:

Serious

Possible Cause:

The error occurred due to the specified error reason.

Solution:

The solution depends on the specified error reason.

See Also:

[Error Reasons](#)

Write failed with error code <error code> for the following tag(s) in device <device name>:<tag list>.

Error Type:

Serious

Possible Cause:

The ROC device responded with an error code.

Solution:

Consult the ROC Plus error code reference for further information regarding the error code.

See Also:

[ROC Plus Error Codes](#)

Write for the following tags of device <device name> failed: <tag list>. <Error Reason>.

Error Type:

Serious

Possible Cause:

The error occurred due to the specified error Reason.

Solution:

The solution depends on the specified error Reason.

• **See Also:**

[Error Reasons](#)

**Write request rejected on read-only item reference <channel name>
<device name> <address>.**

Error Type:

Warning

Possible Cause:

The driver attempted to write to read-only data in the ROC controller.

Solution:

Do not attempt to write to read-only points.

• **Note:**

In some situations, the Automatic Tag Generation process identifies read-only data as read/write, based on the configuration that the driver retrieved from the ROC controller and the ROC specification. Nonetheless, the ROC controller itself is the final authority on whether data is writable. *For more information, refer to the controller's documentation.*

Device Status Messages

The following messages may be generated. Click on the link for a description of the message.

[<Device> may have incomplete history configured for meter <meter>.](#)

[Device <device name> is not responding.](#)

[EFM <type> upload for device <device name> meter <meter name> failed. Framing error.](#)

[Resetting the EFM cache for device <device>.](#)

<Device> may have incomplete history configured for meter <meter>.

Error Type:

Warning

Possible Cause:

The EFM History that was uploaded for the meter is missing one or more fields of data.

Solution:

Check the EFM output for missing data. If necessary, configure the RTU's EFM History using ROCLINK 800.

Device <device name> is not responding.

Error Type:

Serious

Possible Cause:

1. The connection between the device and the host PC is intermittent.
2. The communication parameters for the Ethernet connection are incorrect.
3. The response from the device took longer to receive than the amount of time specified in the "Request Timeout" device setting.

Solution:

1. Verify the cabling between the PC and the device.
2. Verify that the specified communication parameters match those of the device.
3. Increase the Request Timeout setting so that the entire response can be handled.

EFM <type> upload for device <device name> meter <meter name> failed. Framing error.

Error Type:

Warning

Possible Cause:

An EFM upload of the specified type could not be completed due to the specified reason.

Solution:

Resolve the issue. Then, re-attempt the EFM upload.

Resetting the EFM cache for device <device>.

Error Type:

Informational

Possible Cause:

The EFM cache was successfully cleared for the specified device.

Solution:

N/A

User Configurable Table Messages

The following messages may be generated. The messages are listed here in alphabetical order.

Block read for user table <table number>, location range <start location> - <end location> of device <device name> failed. Framing error.

Block read for user table <table number>, location range <start location> - <end location> of device <device name> failed. Locations are not configured in the user table.

Block read for user table <table number>, location range <start location> - <end location> of device <device name> failed. Device returned error code <error code>.

Error parsing user table configuration on device <device name>. User table <table number> contains an invalid point type, location, or parameter in table location <location address>.

Error parsing user table configuration on device <device name>. User table <table number> contains an invalid user-defined point type, location, or parameter in table location <location address>.

Read for user table <table number>, location <location address> of device <device name> failed. Device returned error code <error code>.

Read for user table <table number>, location <location address>, of device <device name> failed. Framing error.

Read for user table <table number>, location <location address>, of device <device name> failed. Location is not configured in the user table.

User table configuration upload on device <device name> failed. Device not responding.

User table configuration upload on device <device name> failed. Device responded with error code <error code>.

User table configuration upload on device <device name> failed. Framing error.

User table configuration upload on device <device name> failed. Internal error.

Block read for user table <table number>, location range <start location> - <end location> of device <device name> failed. Device returned error code <error code>.

Error Type:

Serious

Possible Cause:

The error occurred for the reason specified by the error code.

Solution:

The solution depends on the specified error code.

See Also:

[ROC Plus Error Codes](#)

Block read for user table <table number>, location range <start location> - <end location> of device <device name> failed. Framing error.

Error Type:

Serious

Possible Cause:

There may be an error in the device configuration or the server received a malformed packet.

Solution:

Troubleshoot the device configuration.

Block read for user table <table number>, location range <start location> - <end location> of device <device name> failed. Locations are not configured in the user table.

Error Type:

Serious

Possible Cause:

There is an error in the device configuration. At least one location in the specified range is undefined.

Solution:

Define missing location(s) in the specified user table.

Error parsing user table configuration on device <device name>. User table <table number> contains an invalid user-defined point type, location, or parameter in table location <location address>.

Error Type:

Serious

Possible Cause:

There is an error in the device configuration. The specified user table is configured with at least one invalid user-defined point.

Solution:

Configure the specified user table with valid TLP and/or UDP entries.

Error parsing user table configuration on device <device name>. User table <table number> contains an invalid point type, location, or parameter in table location <location address>.

Error Type:

Serious

Possible Cause:

There is an error in the device configuration. The specified user table is configured with at least one invalid TLP.

Solution:

Configure the specified user table with valid TLP entries.

Read for user table <table number>, location <location address> of device <device name> failed. Device returned error code <error code>.

Error Type:

Serious

Possible Cause:

The error occurred for the reason specified by the error code.

Solution:

The solution depends on the specified error code.

See Also:

[ROC Plus Error Codes](#)

Read for user table <table number>, location <location address> of device <device name> failed. Framing error.

Error Type:

Serious

Possible Cause:

There may be an error in the device configuration or the server received a malformed packet.

Solution:

Troubleshoot the device configuration.

Read for user table <table number>, location <location address> of device <device name> failed. Location is not configured in the user table.

Error Type:

Serious

Possible Cause:

There is an error in the device configuration. The specified user table location is undefined.

Solution:

Define the missing table location in the device.

User table configuration upload on device <device name> failed. Device not responding.

Error Type:

Serious

Possible Cause:

1. The connection between the device and the host PC is intermittent.
2. The communication parameters for the Ethernet connection are incorrect.
3. The response from the device took longer to receive than the amount of time specified in the Request Timeout device setting.

Solution:

1. Verify the network between the PC and the device.
2. Verify that the specified communication parameters match those of the device.
3. Increase the Request Timeout setting so that the entire response can be handled.

User table configuration upload on device <device name> failed. Device responded with error code <error code>.

Error Type:

Serious

Possible Cause:

The error occurred for the reason specified by the error code.

Solution:

The solution depends on the specified error code.

See Also:

[ROC Plus Error Codes](#)

User table configuration upload on device <device name> failed. Framing error.

Error Type:

Serious

Possible Cause:

There may be an error in the device configuration or the server received a malformed packet.

Solution:

Troubleshoot the device configuration.

User table configuration upload on device <device name> failed. Internal error.

Error Type:

Serious

Possible Cause:

Inadequate system resources.

Solution:

Free system resources and reinitialize the server. If trouble persists, please contact Technical Support.

User-Defined Point Messages

The following messages may be generated. Click on a link for a description of that message.

[Block read for point type <point type>, logical address <logical address>, parameter range <start parameter - end parameter> of device <device name> failed. Parameters are not in the loaded UDP configuration.](#)

[Read for point type <point type>, logical address <logical address>, parameter number <parameter> of device <device name> failed. Parameter is not in the loaded UDP configuration.](#)

[Unable to parse the user-defined point configuration information for point type <point type> on device <device name>.](#)

[User-defined point configuration upload for point type <point type>, logical address <logical address>, parameter number <parameter> of device <device name> failed. <Error reason>.](#)

Block read for point type <point type>, logical address <logical address>, parameter range <start parameter - end parameter> of device <device name> failed. Parameters are not in the loaded UDP configuration.

Error Type:

Serious

Possible Cause:

The user program that is associated with the specified parameters has been upgraded to a newer version.

Solution:

Reinitialize the server to access the new parameters available in the upgraded user program.

Read for point type <point type>, logical address <logical address>, parameter number <parameter> of device <device name> failed. Parameter is not in the loaded UDP configuration.

Error Type:

Serious

Possible Cause

The user program that is associated with this parameter has been upgraded to a newer version.

Solution:

Reinitialize the server to access the new parameters available in the upgraded user program.

Unable to parse the user-defined point configuration information for point type <point type> on device <device name>.

Error Type:

Serious

Possible Cause

There was unexpected data in the UDP configuration read from the device.

Solution:

This error requires further troubleshooting. Please contact Technical Support.

User-defined point configuration upload for point type <point type>, logical address <logical address>, parameter number <parameter> of device <device name> failed. <Error reason>.

Error Type:

Serious

Possible Cause

The error occurred due to the specified reason.

Solution:

The solution depends on the specified error reason.

Note:

There is a possibility that the specified error reason may return more than one error code. Each of those possible codes generally means that the UDP point type does not exist in one of the installed user programs. In these cases, users must verify that the point type exists in one of the user programs installed on the device. For more information, refer to [User-Defined Point Types](#).

See Also:

[Error Reasons](#)

ROC Plus Error Codes

Note: Opcode 255 is an error message indicator that returns an error code.

Error Code	Description
1	Invalid Opcode request
2	Invalid parameter number
3	Invalid logical number
4	Invalid point type
5	Received too many data bytes
6	Received too few data bytes
12	Obsolete (reserved, but not used)
13	Outside valid address range
14	Invalid history request
16	Invalid event entry
17	Requested too many alarms
18	Requested too many events
19	Write to read-only parameter*
20	Security error
21	Invalid security login
22	Invalid store and forward path
24	History configuration in progress
25	Invalid parameter range
29	Invalid 1 day history index request
30	Invalid history point
31	Invalid min./max. request
32	Invalid TLP
33	Invalid time
34	Illegal Modbus range
63	Requested access level too high

*Exception for Opcode 166, which can have multiple parameters. Some parameters may be read only.

Index

A

- Absolute 24
- Access Level 27
- Address <address> is out of range for the specified device or register. 45
- Address Descriptions 39
- Address Validation 45
- Advanced Channel Properties 14
- Allow Sub Groups 23
- Automatic Tag Database Generation Messages 47

B

- BIN 42
- Binary Field Example 42
- Block read for point type <point type>, logical address <logical address>, parameter range <start parameter - end parameter> of device <device name> failed. <Error reason>. 52
- Block read for point type <point type>, logical address <logical address>, parameter range <start parameter - end parameter> of device <device name> failed. Parameters are not in the loaded UDP configuration. 53, 64
- Block read for user table <table number>, location range <start location> - <end location> of device <device name> failed. Device returned error code <error code>. 60
- Block read for user table <table number>, location range <start location> - <end location> of device <device name> failed. Framing error. 60
- Block read for user table <table number>, location range <start location> - <end location> of device <device name> failed. Locations are not configured in the user table. 60
- Boolean 36
- Byte 36

C

- Channel Assignment 18
- Channel Properties - General 12
- Channel Properties — Ethernet Communications 12
- Channel Properties — Write Optimizations 13
- Channel Setup 8
- Char 36

Communication Parameters 24
Communication Serialization 14
Communication Specification 26
Communications Timeouts 20-21
Connect Timeout 20
Create 23

D

Data Collection 19
Data type <type> is not valid for device address <address>. 46
Data Types Description 36
Date 36
Daylight Saving Time 24
Delete 23
Demote on Failure 21
Demotion Period 21
Description 18
Device-Specific Messages 51
Device <device name> is not responding. 58
Device <device> responded with error. (Tag <tag address>) - Details: <error code>. 53
Device address <address> contains a syntax error. 46
Device address <address> is read only. 46
Device may have incomplete history configured for meter <meter>. 58
Device name - Failed to read EFM pointer file. <Extended error>. 51
Device name - Failed to write EFM pointer file. <Extended error>. 52
Device Properties - EFM Meters 27
Device Properties — Auto-Demotion 21
Device Properties — General 18
Device Properties — Tag Generation 22
Device Setup 16
Device Status Messages 58
Diagnostics 12
Discard Requests when Demoted 22
Do Not Scan, Demand Poll Only 20
Driver 12, 18
Duty Cycle 14
DWord 36
DWord TLP 36

E

- EFM <type> upload for device <device name> meter <meter name> failed. Framing error. 59
- EFM Attribute Mapping 30
- Error Descriptions 45
- Error importing CSV tag record <record number>: Address <address> is out of range for the specified device or register. 47
- Error parsing user table configuration on device <device name>. User table <table number> contains an invalid point type, location, or parameter in table location <location address>. 61
- Error parsing user table configuration on device <device name>. User table <table number> contains an invalid user-defined point type, location, or parameter in table location <location address>. 61
- Error Reasons 45

F

- Failed to obtain data block for point type = <point type>, logical address = <address>, starting parameter = <starting parameter>, ending parameter <ending parameter> for device <device>. Error = <ROC error code>. 53
- Failed to write data for point type = <point type>, logical address = <address>, parameter = <parameter> for device <device>. Error = <error code>. 54
- Float 36

G

- Generate 22
- Global Settings 15

H

- Help Contents 6

I

- ID 19
- IEEE-754 floating point 14
- Initial Updates from Cache 20
- Inter-Request Delay 21
- Interval 24

L

Load Balanced 15
Location Details 41
Logical Details 41
Logical/Location Details 41
LongLong 36

M

Method 24
Missing address. 46
Model 18
Multiple batches completed since the previous batch history poll for meter <meter> on device <device>. The last uploaded batch ticket number is <last ticket number> and the current batch ticket number is <current ticket number>. 54

N

Name 18
Network Adapter 13
Network Mode 15
Non-Normalized Float Handling 14

O

On Device Startup 22
On Duplicate Tag 23
On Property Change 22
OnPoll 24
Operator Identification 27
Operator identification failed for device <device name>. <Error reason>. 55
Optimization Method 13
Overview 7
Overwrite 23

P

Parent Group 23

Priority 15

Q

QWord 36

R

Read for point type <point type>, logical address <logical address>, parameter number <parameter number> of device <device name> failed. <Error reason>. 55

Read for point type <point type>, logical address <logical address>, parameter number <parameter> of device <device name> failed. Parameter is not in the loaded UDP configuration. 64

Read for user table <table number>, location <location address> of device <device name> failed. Device returned error code <error code>. 61

Read for user table <table number>, location <location address> of device <device name> failed. Framing error. 62

Read for user table <table number>, location <location address> of device <device name> failed. Location is not configured in the user table. 62

Redundancy 34

Request All Data at Scan Rate 20

Request Data No Faster than Scan Rate 20

Request Timeout 20

Resetting the EFM cache for device <device>. 59

Respect Client-Specified Scan Rate 20

Respect Tag-Specified Scan Rate 20

Retry Attempts 21

ROC initialization error: Unable to read general configuration. 55

ROC initialization error: Unable to retrieve I/O map. 56

ROC Plus Error Codes 65

ROC Plus Point Types 39

S

Scan Mode 19

Serialization of EFM data to temporary file <file name> failed. Reason: <file I/O error>. 56

Short 36
Simulated 19
Statistics Items 42
String 36

T

Tag Generation 22
Tag Import Settings 25
The username or password supplied was not accepted. Error = 6. 56
The username or password supplied was not accepted. Error = 63. 56
Time Synchronization 24
Time synchronization with device <device name> failed. <Error reason>. 57
Time Zone 24
Timeouts to Demote 21
TLP Data Type Conversion Process and Examples 38
Transactions 15

U

Unable to generate a tag database for device <device>. Reason: <Error reason>. 47
Unable to generate a tag database for device <device>. Reason: Auto tag generation. 48
Unable to generate a tag database for device <device>. Reason: Error while reading from import file. 48
Unable to generate a tag database for device <device>. Reason: Error while reading from ROC system file. 48
Unable to generate a tag database for device <device>. Reason: Failed to open recordset. 49
Unable to generate a tag database for device <device>. Reason: Import file <file name> not found. 49
Unable to generate a tag database for device <device>. Reason: Input file is corrupt. 49
Unable to generate a tag database for device <device>. Reason: Input file not found. 50
Unable to generate a tag database for device <device>. Reason: Low memory resources. 50
Unable to generate a tag database for device <device>. Reason: ROC system file <file name> not found. 50
Unable to generate a tag database for device <device>. Reason: System DB file <file name> not found. 50
Unable to parse the user-defined point configuration information for point type <point type> on device <device name>. 64
User-defined point configuration upload for point type <point type>, logical address <logical address>, parameter number <parameter> of device <device name> failed. <Error reason>. 64
User-Defined Point Error Messages 63

User-Defined Point Types 41

User Configurable Table Messages 59

User table configuration upload on device <device name> failed. Device not responding. 62

User table configuration upload on device <device name> failed. Device responded with error code <error code>. 62

User table configuration upload on device <device name> failed. Framing error. 63

User table configuration upload on device <device name> failed. Internal error. 63

User Table Points 42

V

Virtual Network 15

W

Word 37

Word HOURMINUT 37

Write All Values for All Tags 13

Write failed with error code <error code> for the following tag(s) in device <device name>:<tag list>. 57

Write for the following tags of device <device name> failed: <tag list>. <Error Reason>. 57

Write Only Latest Value for All Tags 13

Write Only Latest Value for Non-Boolean Tags 13

Write Optimizations 13

Write request rejected on read-only item reference <channel name> <device name>. 58