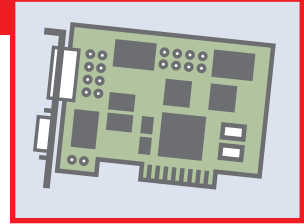


CIF – Communication Interface



PC cards as fieldbus interface

- All PC card formats can be supplied
- Unified drivers for all fieldbus systems and all hardware platforms
- One configuration software
- OPC Server available

■ Fieldbus integration for PC-based systems

Whether as Master or Slave, fieldbus systems have been proven themselves excellently in PC-based automation. For more than 10 years, the CIF cards from the Hilscher Company are used successfully in the most varied areas of application and are now a standard in the market.

■ PC cards in all formats

With the CIF communication interface, the user will have a unified standard for all the fieldbus systems on different hardware platforms.

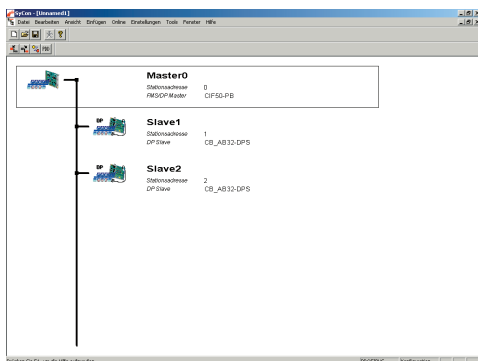
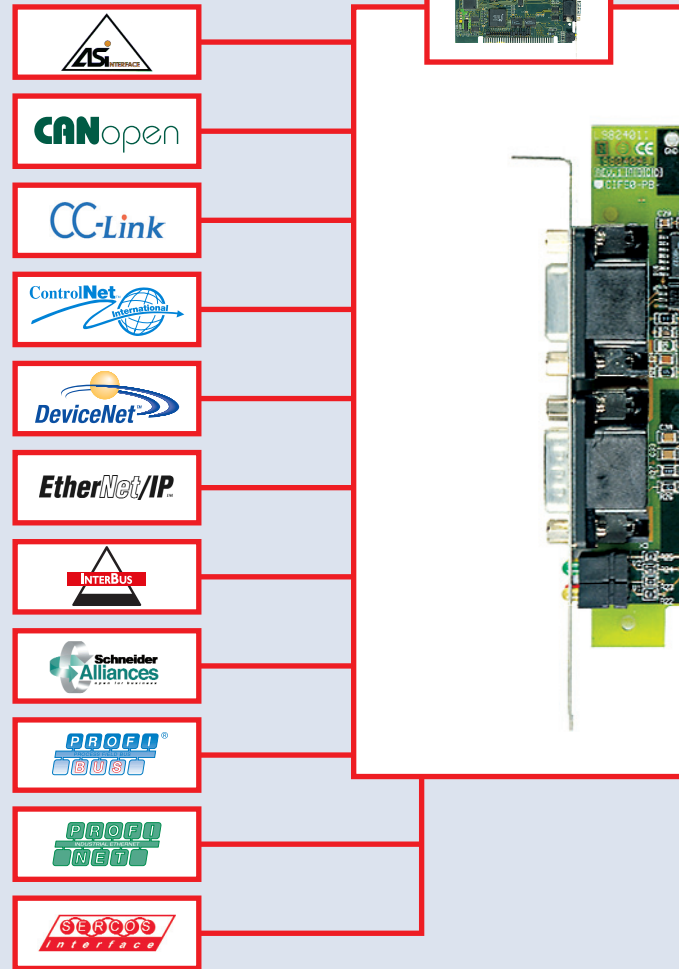
We supply our PC communication cards with ISA or PCI busses in standard, compact or PC/104 and PC/104+ format and as PCMCIA card for all leading fieldbus systems.

CIF – Communication Interface

Communication for PC based Automation

Fieldbus systems made easy

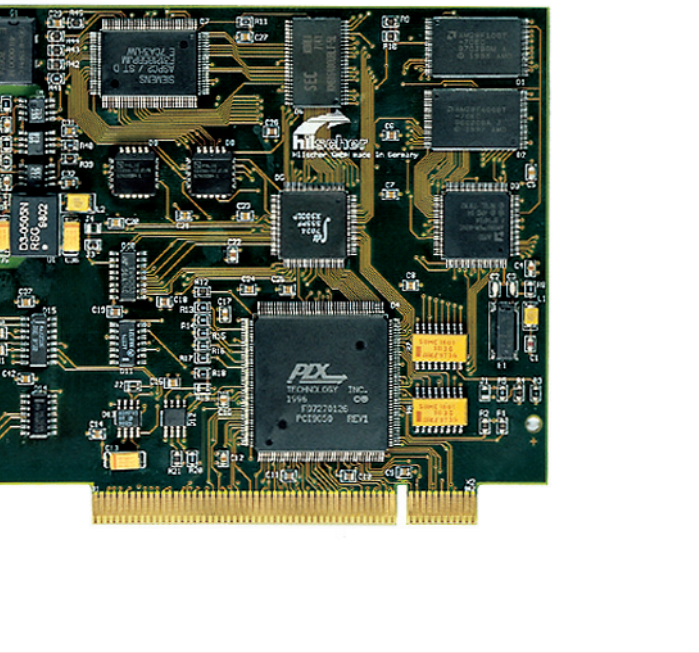
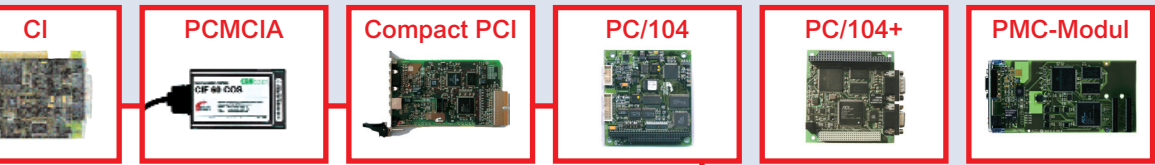
With a fieldbus card as a fieldbus Master, one always has the current process image of all configured Slave devices. With a CIF card for fieldbus Slave communication, the Dual Port memory of the card serves as a process image which can be accessed from both sides at the same time. In both variants the user program need not concern itself with the actual fieldbus communication as this task is automatically undertaken by the CIF card, thanks to its own communication processor.



One configuration for all fieldbusses

The SyCon system configurator allows the uniform configuration of the communication relationship between fieldbus Slave devices and the Master. The configuration of the communication relationship to the individual Slave devices and the respective fieldbus Master are stored permanently down in the configuration memory of the CIF card.





All card formats

Whether Soft programmable control system, CNC control, Industry terminal, decentralized I/O module or intelligent drive, every application based on a PC standard can be equipped with a CIF card for industrial communication.

Diagnostic Interface

Serial RS 232 Interface for configuration and online diagnostic.

LED status displays

The operational condition of the CIF card and the communication activities on the fieldbus interface are displayed.



Drivers

The universal CIF Device Driver and the function library DRV-TKIT present the basis for the execution of the fieldbus integration on the application level independently of the selected hardware platform. An integration once developed can then be used with every available fieldbus system. Drivers for many Soft PLC's are available.



The CIF OPC-Server is available for every fieldbus standard and all Windows-based operating systems. There are finished drivers available for many visualizing systems and with these the CIF cards can be accessed directly.

CIF Technical Data

Special Developments

Do you need a special card with a special protocol?
We are in a position to meet your special needs. Challenge us ...

Product overview

Fieldbus	ISA	Slave	Master
AS-Interface	CIF 30		-ASM
CANopen	CIF 30	-COS	-COM
ControlNet	CIF 30	-CNS	-CNM
DeviceNet	CIF 30	-DNS	-DNM
InterBus	CIF 30	-IBS	-IBM
Modbus Plus	CIF 30-MBP		
PROFIBUS	CIF 30	-DPS	-PB

Fieldbus	PCI	Slave	Master
AS-Interface	CIF 50		-ASM
CANopen	CIF 50	-COS	-COM
CC-Link	CIF 50	-CCS	
ControlNet	CIF 50	-CNS	-CNM
DeviceNet	CIF 50	-DNS	-DNM
Ethernet	CIF 50-EN		
InterBus	CIF 50	-IBS	-IBM
Modbus Plus	CIF 50-MBP		
PROFIBUS	CIF 50	-DPS	-PB
SERCOS	CIF 50-SCM		
SERCOS	CIF 50-SCEB passiv		

Fieldbus	PCMCIA	Slave	Master
CANopen	CIF 60	-COS	-COM
DeviceNet	CIF 60	-DNS	-DNM
InterBus	CIF 60	-IBM	
PROFIBUS	CIF 60	-DPS	-PB
SERCOS	CIF 60-SCEB passiv		

Fieldbus	Compact PCI	Slave	Master
CANopen	CIF 80	-COS	-COM
DeviceNet	CIF 80	-DNS	-DNM
PROFIBUS	CIF 80	-DPS	-PB

Fieldbus	PC/104	Slave	Master
AS-Interface	CIF 104		-ASM
CANopen	CIF 104	-COS	-COM
CC-Link	CIF 104	-CCS	
ControlNet	CIF 104	-CNS	-CNM
DeviceNet	CIF 104	-DNS	-DNM
InterBus	CIF 104	-IBS	-IBM
Ethernet	CIF 104-EN		
Modbus Plus	CIF 104-MBP		
PROFIBUS	CIF 104	-DPS	-PB
SERCOS	CIF 104-SCEB passiv		

Fieldbus	PC/104+	Slave	Master
CANopen	PC/104+		-COM
DeviceNet	PC/104+	-DNS	-DNM
PROFIBUS	PC/104+		-PB

Fieldbus	Mezzanine Card	Slave	Master
CANopen	PMC	-COS	-COM
DeviceNet	PMC	-DNS	-DNM
PROFIBUS	PMC	-DPS	-PB

Technical Data

AS-Interface	Master
	2 channels
	62 Slaves
	248 Inputs/186 Outputs

CANopen	Slave	Master
	510 Byte I/O data	7 KByte I/O data
	32 Rx-/32 Tx-PDOs	unlimited PDOs
	Min.Boot up	Min.Boot up
	COB ID Distribution default/via SDO	COB ID Distribution default/via SDO
	Emergency Message	Emergency Message
	Life Guarding, Heartbeat	Node, Life Guarding, Heartbeat
	Event trigger	Event trigger
	Remote request	Cyclic, Acyclic
		CiA DS-401, -402, -406

CC-Link	Slave
	max. 4 stations each with
	64 Bit I/O data
	8 Words I/O data
	Polling

ControlNet	Slave	Master
	480 Words I/O data	7 KByte I/O data
	CIP, Peer-to-Peer	CIP, Peer-to-Peer
	Network Access Port	Network Access Port

DeviceNet	Slave	Master
	510 Byte I/O data	63 Slaves
	Explicit, Polling	7 KByte I/O data
	Bit-strobe, Cyclic, Change of State	Explicit, Polling, Bit-strobe, Cyclic, Change of State

Ethernet	7 KByte E/A-Daten
	BOOTP, DHCP, FTP, SMTP, SNMP, TCP/IP, UDP, Open Modbus, Ethernet/IP

InterBus	Slave	Master
	20 Words I/O data	128 Slaves
	PCP channel	1024 Byte I/O data
		PCP channel
		InterBus-Loop Generation 4

PROFIBUS-DP	Slave	Master
	368 Byte I/O data	125 Slaves
	DPV1-Extension	7 KByte I/O data
		DPV1-Extension class 2 services
		MPI-functions

SERCOS	Passiv	Master
	SERCON 816	8 drive

Diagnostic interface
RS232C, non isolated

Operating voltages/ temperature	
5 V/max. 500 mA – 650 mA	
± 12 V/max. 50 mA	CIF 30/CIF 50
5 V ± 5%/650 mA	CIF 60
3,3 V ± 5% / 500 mA	CIF 80
5 V ± 5%/650 mA	CIF 104
3,3 V ± 5%/400 mA	CIF 104P, PMC
5 V ± 5%/250 mA	CIF xx-SCEB
5 V ± 5%/400 mA	CIF xx-SCM
0 °C – 55 °C	

Headquarter

Deutschland
Hilscher Ges. für
Systemautomation mbH
Rheinstr. 15
D-65795 Hattersheim
Tel. +49 (0) 6190 9907-0
Fax +49 (0) 6190 9907-50
E-Mail: info@hilscher.com
web: www.hilscher.com

Subsidiary

France
Hilscher France
FR-69500 Bron
Tel. +33 (0) 472379840
Fax +33 (0) 478268327
E-Mail: info@hilscher.fr
web: www.hilscher.com

Italy
Hilscher Italia S.r.L.
IT 20090 MI, Vimodrone
Tel. +39 (0) 225007068
Fax +39 (0) 225029973
E-Mail: info@hilscher.it
web: www.hilscher.com

Schweiz
Hilscher Swiss GmbH
CH 4500 Solothurn
Tel. +41 (0) 32 6236 633
Fax +41 (0) 32 6236 632
E-Mail: info@hilscher.ch
web: www.hilscher.com

USA
Hilscher North America Inc.
US 60555 Warrenville
Tel. +1 (0) 630 836 8677
Fax +1 (0) 630 836 8010
E-Mail: info@hilscher.us
web: www.hilscher.com

Distributors

Australia
Fieldbus Specialists
www.fieldbus.com.au
Austria
Elektronik-Systeme Lauer GmbH
www.elektronik-systeme.psoft.at

Belgium
TelereX N.V.S.A.
www.telereX-europe.com

Brazil
Soft Brasil Automacao Ltda.
www.softbrasil.com.br

China
Shanghai CIT Control
www.citect.com-cn

Finland
Novotek Finland Oy
www.dosesoft.fi

Japan
Euro-Far-East Co. Ltd.
www.euro-fareast.co.jp

Korea
CREVIS Co.,LTD
www.CREVIS.co.kr

Netherlands
TelereX Nederland B.V.
www.telereX-europe.com

Norway
AD Elektronik AS
www.ade.no

Portugal
MVA Electrotecnia
www.mva.pt

Russia
ProSoft Ltd.
www.prosoft.ru

Singapore
Vector Info Tech
www.vectorinfotech.com

South Africa
Innomatic
www.innomatic.co.za

Spain
Sistel Control SL
www.sistelcontrol.com

Sweden
Novotek Sverige AB
www.novotek.se

Tschechien
ZPA-Industry a.s.
www.zpaindustry.cz

UK
Miles Industrial Electronics Ltd
www.milesie.co.uk

