

Toyopuc PC3/PC2 Ethernet Driver Help

© 2015 Kepware, Inc.

Table of Contents

Table of Contents	2
Toyopuc PC3/PC2 Ethernet Driver Help	3
Overview	3
Device Setup	4
Diagnostics Tags	5
Multi-Point Read Support	6
Configuration Ladder for EN-I/F Ethernet Module	8
Configuring the FL/ET-T-V2 Ethernet Module	9
Configuring the PC10G-CPU for Ethernet Communications	14
Data Type Description	19
Address Descriptions	20
PC2/PC2 Interchange Mode Address Descriptions	20
PC3 Address Descriptions	21
PC10G Address Descriptions	25
Error Descriptions	29
Address Validation	29
Missing address.	29
Device address <address> contains a syntax error.	29
Address <address> is out of range for the specified device or register	29
Data Type <type> is not valid for device address <address>.	29
Device address <address> is read only.	30
Array size is out of range for address <address>.	30
Array support is not available for the specified address: <address>.	30
Device Status Messages	30
Device <device name> is not responding.	30
Unable to write to <address> on device <device name>.	31
Device Error Codes	32
Error Response Data: Error Code Table	32
Index	33

Toyopuc PC3/PC2 Ethernet Driver Help

Help version 1.040

CONTENTS

[Overview](#)

What is the Toyopuc PC3/PC2 Ethernet Driver?

[Device Setup](#)

How do I configure a device for use with this driver?

[Data Types Description](#)

What data types does this driver support?

[Address Descriptions](#)

How do I address a data location on a Toyopuc PC3/PC2 Ethernet device?

[Error Descriptions](#)

What error messages does the Toyopuc PC3/PC2 Ethernet driver produce?

Overview

The Toyopuc PC3/PC2 Ethernet Driver provides an easy and reliable way to connect Toyopuc PC3/PC2 Ethernet devices to OPC Client applications, including HMI, SCADA, Historian, MES, ERP, and countless custom applications. It is intended for use with Toyopuc PC3, PC2 and PC10G series PLCs using the Ethernet communications interface. The Toyopuc PC3/PC2 Ethernet driver supports extensive diagnostics tags and the Toyopuc PC3/PC2's multi-point read features. For more information, refer to [Diagnostics Tags](#) and [Multi-Point Read Support](#) .

Device Setup

Supported Devices

Toyopuc PC3, PC2 and PC10G series
 The PC2 model selection can be used with PC3 > PLCs operating in the PC2 Interchange mode.

Note: This driver is limited to 1024 devices.

Communication Protocol

Toyopuc PC3/PC2 Ethernet Computer Link Protocol

Connection Timeout

This parameter specifies the time that the driver will wait for a connection to be made with a device. Depending on network load, the connect time may vary with each connection attempt. The default setting is 5 seconds. The valid range is 1 to 30 seconds.

Note: Making a connection with a device can be very time consuming. When connecting with multiple devices located at different IP addresses or port numbers, define an additional Toyopuc Ethernet channel in the OPC Server project for this unique device. Connecting to multiple devices using the Relay Command through a single IP and port number will not cause a new connection to be opened and will not incur a connection delay.

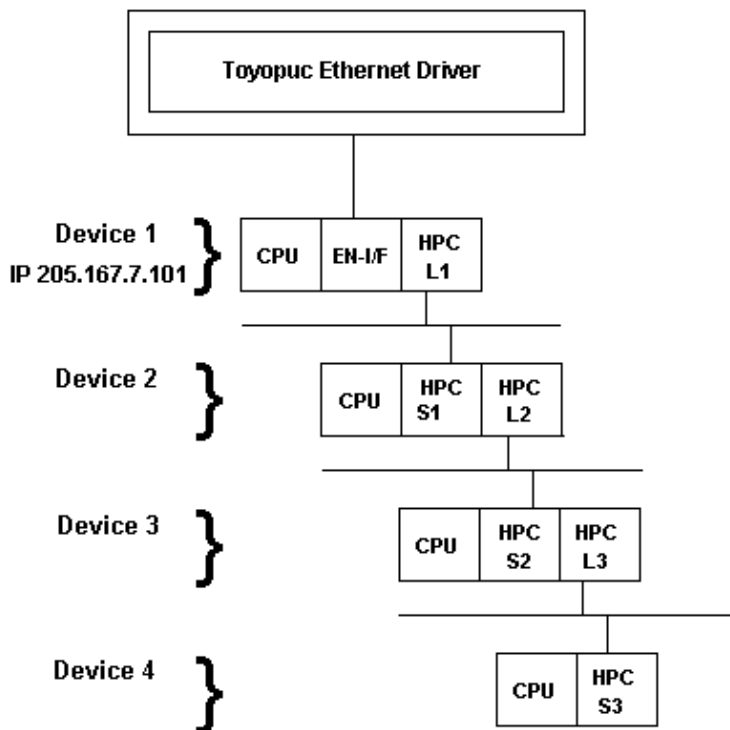
Port Number

This parameter specifies the port number that will be used to connect to the Toyopuc PLC. The Toyopuc EN-I/F Ethernet PC3/PC2 module supports eight ports for communications. Each port must be dedicated to a single connection. When specifying a port number, ensure that no other Ethernet node will attempt to use this port number on the target Toyopuc PLC. The same port number can be used when communicating with multiple Toyopuc PLCs.

Device IDs

The Device ID, specified as YYY.YYY.YYY.YYY[P1,L1, S1, L2, S2, P3, L3, S3], is used to specify the Device IP address along with Relay Command Link/Exchange information on the Ethernet network. YYY designates the Device IP address: each YYY byte should be in the range of 0 to 255.

Note: A request can be relayed through one device to another device configured with the same link module, such as HPC-Link or FL-net. This relay connection is established by appending a link/exchange path to the device IP address. The following image illustrates the use of the routing path between HPC-linked devices:



A routing command can only be issued through a maximum of four devices. Routing allows the Ethernet driver to request data from non-Ethernet devices. To request data from Device 3, the driver can route a command through Device 1 onto Device 2 then to Device 3.

Examples

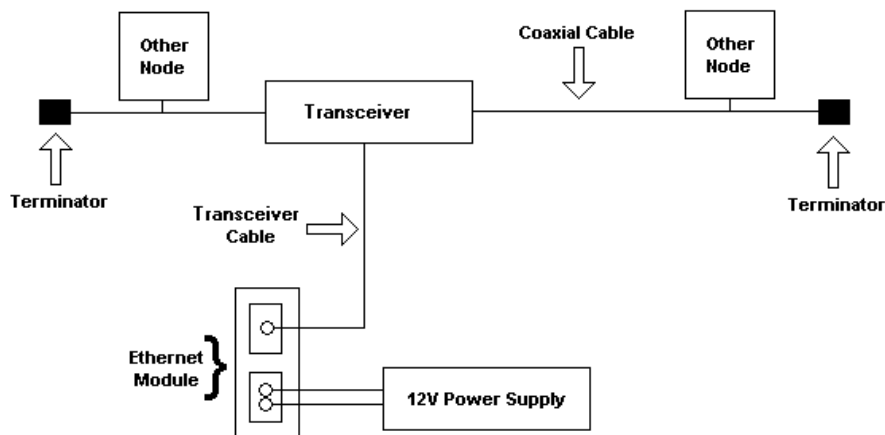
1. Defining a Device ID to request data from Device 1. Device ID: 205.167.7.101.
2. Defining a Device ID to request data from Device 3. Device ID: 205.167.7.101[L1,S1,L2,S2].

Note: Lx and Sx represent the Link/Station numbers assigned to a device. Consult the Toyopuc PC2 EN-I/F manual, HPC Link manual, or FL/ET-T-V2H manual for more information on link/station numbers. The L and S must be included as part of the Relay routing information when specifying a Device ID. The Px represents the program number for PC3J systems. The Px value should precede the link variable on each layer of the route.

Example

Device ID: 205.167.7.101[P2,L1,S1,P1,L2,S2].

Cable Connections



Diagnostics Tags

Diagnostics Tags provide information on how the Toyopuc PC3/PC2 Ethernet driver is performing at both the channel level and device level. At the channel level, diagnostics tags provide information that covers all operations performed by the driver when communicating with any PLC on the network. At the device level, diagnostics tags provide information that pertains only to the device under which the diagnostic tags have been requested.

Channel-Level Diagnostics Tags

Tag Name	Functional Description
ChannelReadTime	Contains the amount of time in milliseconds required to read all currently active data for all devices on this channel. This value is a signed long.
ChannelHighTime	Contains the amount of time in milliseconds of longest read cycle. This value is a signed long.
ChannelLowTime	Contains the amount of time in milliseconds of shortest read cycle. This value is a signed long.
ChannelReadsPerformed	Contains a count of the reads performed on this channel for all devices. This is a signed long and will roll over.
ChannelWritesPerformed	Contains a count of the writes performed on this channel for all devices. This is a signed long and will roll over.
ChannelTimeouts	Contains a count of the number of timeout/message failures that have occurred for all devices. The <code>_ChannelTimeouts</code> count is for any error that may occur on a message attempt. The value does not necessarily indicate how many messages failed to be sent altogether. It should be used to diagnose possible communication issues with specific devices. This is a signed long and will roll over.

Device-Level Diagnostics Tags

Tag Name	Functional Description
DeviceReadTime	Contains the amount of time in milliseconds required to read a block of data from the specified device. This value is a signed long.
DeviceHighTime	Contains the longest amount of time in milliseconds required to read a block of data from the specified device. This value is a signed long.
DeviceLowTime	Contains the shortest amount of time in milliseconds required to read a block of data from the specified device. This value is a signed long.
DeviceReadsPerformed	Contains a count of the reads performed on this device. This is a signed long and will roll over.
DeviceWritesPerformed	Contains a count of the writes performed on this device. This is a signed long and will roll over.
DeviceTimeouts	Contains a count of the number of timeout/message failures that have occurred on the specified device. The <code>_ DeviceTimeouts</code> count is for any error that may occur on a message attempt. The value does not necessarily indicate how many messages failed to be sent altogether. It should be used to diagnose possible communication issues with this specific device. This is a signed long and will roll over.
DeviceMultiPointReads	Contains a count of the number of multi-point read requests that are currently being used to acquire all data that is marked for multi-point operation. This tag can be used to tune multi-point read operation. The goal of course being to limit the number of multi-point reads being done to the lowest count possible, preferably 1. This is a signed long and will roll over.

Note: All diagnostics tags are Read/Write. The only value that can be written to the tags is zero (which will clear or reset them).

Multi-Point Read Support

The Toyopuc PLC supports the ability to read data spread randomly throughout the PLC using a single command. By using this command, users can read crucial data items quickly and efficiently. The Toyopuc PC3/PC2 Ethernet driver automatically attempts to make the use of the multi-point command both easy and efficient. Any memory type that can be acquired by the Toyopuc PC3/PC2 Ethernet driver can be part of a multi-point read command. To mark a particular data item to be part of a multi-point request, place the '#' character in front of any current address. The table below is shown with the addition of the '#' character to each address. For information on the maximum data that can be read with a multi-point command, refer to [Multi-Point Limitations](#).

There are some things that should be considered when using the multi-point read functions. The multi-point command can increase the speed of the data acquisition but if overused, it will need to make multiple multi-point commands to read all the requested data. When this occurs, the overall performance of the driver will be reduced. The key is to use the multi-point command wisely.

The driver will automatically group data from memory types like bit memory into 16 bit values. For example, for the PC3 model, if P1-X1, P1-X3, P1-X4, P1-X6, P1-X9, P1-XA, P1-XB are marked as part of a multi-point read using the '#', users would enter an address of #P1-X1, #P1-X3, #P1-X4, #P1-X6, #P1-X9, #P1-XA, #P1-XB. These seven items would be placed into a single 16 bit value; therefore, users would use only one of the 128 16 bit values available in a single multi-point read command. The 7 items were grouped together because the address of each bit fell within a single 16 bit word value of X memory. If 7 items like #P1-X1, #P1-X20, #P1-X55, #P1-X77, #P1-X99, #P1-XAA, #P1-XBB are entered as part of a multi-point read, each bit in this case would require an entire 16 bit value in the multi-point read command to receive the data. Plan the data usage in the controller. If possible, make sure that the bits being read are grouped closely. This prudent planning applies primarily to the bit memory types. Register memory requires a single 16 bit value (two 16 bit values in the case of DWords) for each register that is added to the multi-point read.

By using this information, users can plan the multi-point reads. The Toyopuc PC3/PC2 Ethernet driver can perform as many multi-point reads as are needed to acquire all the data that has been marked for multi-point operation. Remember, however, that the driver will run slower when there are many read being run. To determine how many multi-point read requests the Toyopuc Ethernet PC3PC2 driver is using to acquire all currently defined multi-point data, use the special diagnostic tag "`_DeviceMultiPointReads`". For more information on this tag, refer to [Diagnostics](#).

The multi-point read operation can be combined with the normal data reads of the Toyopuc PC3/PC2 Ethernet driver. For example, if a block of 50 D registers consecutively ordered is being read, it may be more efficient to read the 50 D registers as part of a normal block read and save the space in the multi-point read function for data that is spread more randomly throughout the PLC memory. Use the diagnostics tags to help determine the most efficient way of acquiring the data for the application.

Multi-Point Limitations

For tags belonging to device models PC3 Device and PC10G Device, the maximum data requested for the data types are as follows:

Boolean: 1024*
 Byte: 128
 Word: 64
 DWord: 32

*If contiguous Booleans are requested, the request will be done in one multi-point read.

Combination of any of the above data types in a single multi request has to be within the following limit:
 $(\text{No. of Booleans}/16) + (\text{No. of Bytes}/2) + \text{No. of Words} + (\text{No. of DWords} * 2) \leq 64$

For tags belonging to device model PC2/PC2 Interchange, the maximum data requested for the data types are as follows:

Boolean: 2048*
 Byte: 256
 Word: 128
 DWord: 64

*If contiguous booleans are requested, the request will be done in one multi-point read.

Combination of any of the above data types in a single multi request has to be within the following limit:
 $(\text{No. of Booleans}/16) + (\text{No. of Bytes}/2) + \text{No. of Words} + (\text{No. of DWords} * 2) \leq 128$

Memory Types Shown with the Multi-Point Marker

Memory Type	Syntax	Data Types	Access
Edge Relay (P)	#P0000-#P01FF #P000-#P01F #P000-#P01E	Boolean Byte, Word, Short, BCD DWord, Long, LBCD	Read/Write
Keeping Relay (K)	#K0000-#K02FF #K000-#K02F #K000-#K02E	Boolean Byte, Word, Short, BCD DWord, Long, LBCD	Read/Write
Specific Relay (V)	#V0000-#V00FF #V000-#V0F #V000-#V0E	Boolean Byte, Word, Short, BCD DWord, Long, LBCD	Read/Write
Timer Bits (T)	#T0000-#T01FF #T000-#T01F #T000-#T01E	Boolean Byte, Word, Short, BCD DWord, Long, LBCD	Read/Write
Count Bits (C)	#C0000-#C01FF #C000-#C01F #C000-#C01E	Boolean Byte, Word, Short, BCD DWord, Long, LBCD	Read/Write
Link Relay (L)	#L0000-#L07FF #L000-#L07F #L000-#L07E	Boolean Byte, Word, Short, BCD DWord, Long, LBCD	Read/Write
I/O Relay (X)	#X0000-#X07FF #X000-#X07F #X000-#X07E	Boolean Byte, Word, Short, BCD DWord, Long, LBCD	Read/Write
I/O Relay (Y)	#Y0000-#Y07FF #Y000-#Y07F #Y000-#Y07E	Boolean Byte, Word, Short, BCD DWord, Long, LBCD	Read/Write
Internal Relay (M)	#M0000-#M07FF #M000-#M07F #M000-#M07E	Boolean Byte, Word, Short, BCD DWord, Long, LBCD	Read/Write
Specific Register (S)	#S0000-#S03FF #S0000-#S03FE	Byte, Word , Short, BCD DWord, Long, LBCD	Read/Write
Timer/Present Value Register (N)	#N0000-#N01FF #N0000-#N01FE	Byte, Word , Short, BCD DWord, Long, LBCD	Read/Write
Link Register (R)	#R0000-#R07FF #R0000-#R07FE	Byte, Word , Short, BCD DWord, Long, LBCD	Read/Write
Data Register (D)	#D0000-#D2FFF #D0000-#D2FFE	Byte, Word , Short, BCD DWord, Long, LBCD	Read/Write

File Register (B)	#B0000-#B1FFF #B0000-#B1FFE	Byte, Word , Short, BCD DWord, Long, LBCD	Read/Write
Extended I/O Relay (EX)	#EX0000- #EX07FF #EX000-#EX07F #EX000-#EX07E	Boolean Byte, Word, Short, BCD DWord, Long, LBCD	Read/Write
Extended I/O Relay (EY)	#Y0000-#Y07FF #Y000-#Y07F #Y000-#Y07E	Boolean Byte, Word, Short, BCD DWord, Long, LBCD	Read/Write
Extended Internal Relay (EM)	#EM0000- #EM1FFF #EM000-#EM1FF #EM000-#EM1FE	Boolean Byte, Word, Short, BCD DWord, Long, LBCD	Read/Write
Extended Keep Relay (EK)	#EK0000- #EK0FFF #EK000-#EK0FF #EK000-#EK0FE	Boolean Byte, Word, Short, BCD DWord, Long, LBCD	Read/Write
Extended Special Relay (EV)	#EV0000- #EV0FFF #EV000-#EV0FF #EV000-#EV0FE	Boolean Byte, Word, Short, BCD DWord, Long, LBCD	Read/Write
Extended Timer Bits (ET)	#ET0000- #ET07FF #ET000-#ET07F #ET000-#ET07E	Boolean Byte, Word, Short, BCD DWord, Long, LBCD	Read/Write
Extended Counter Bits (EC)	#EC0000- #EC07FF #EC000-#EC07F #EC000-#EC07E	Boolean Byte, Word, Short, BCD DWord, Long, LBCD	Read/Write
Extended Link Relay (EL)	#EL0000-#EL1FFF #EL000-#EL1FF #EL000-#EL1FE	Boolean Byte, Word, Short, BCD DWord, Long, LBCD	Read/Write
Extended Edge Direction (EP)	#EP0000-#EP0FFF #EP000-#EP0FF #EP000-#EP0FE	Boolean Byte, Word, Short, BCD DWord, Long, LBCD	Read/Write
Extended Data Register (U)	#U0000-#U7FFF #U0000-#U7FFE	Byte, Word , Short, BCD DWord, Long, LBCD	Read/Write
Extended Timer/Counter Value (EN)	#EN0000- #EN07FF #EN0000- #EN07FE	Byte, Word , Short, BCD DWord, Long, LBCD	Read/Write
Extended Setup Value Register (H)	#H0000-#H07FF #H0000-#H07FE	Byte, Word , Short, BCD DWord, Long, LBCD	Read/Write
Extended Special Register	#ES0000- #ES07FF #ES0000- #ES07FE	Byte, Word , Short, BCD DWord, Long, LBCD	Read/Write

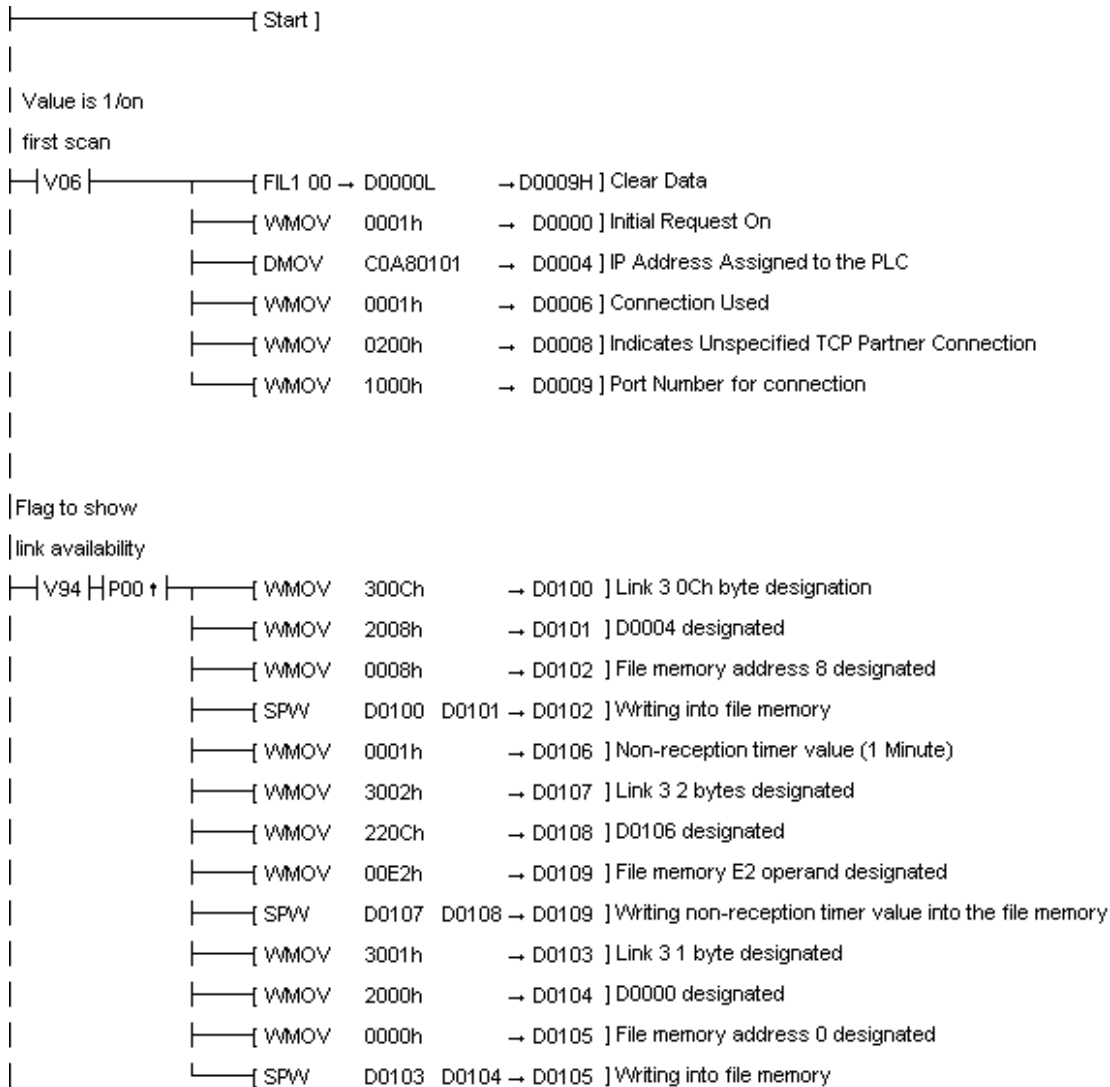
Configuration Ladder for EN-I/F Ethernet Module

To make multiple connections to the Toyopuc PLC PC2/PC3, users must connect with different Port IDs in each client connection. To do this, the ports in the ladder program must be initialized. The example below shows how to initialize the Ethernet card for one connection port. The following parameters are assumed:

1. The Ethernet module link number is 3.
2. The PC IP address is being set to 192.168.1.1 (C0,A8,01,01).
3. The module allows 8 connections. This example specifies 1.
4. The port will be opened as "TCP," "passive partner unspecified."
5. The port number for the first connection is 1000h (4096).

6. The file memory 0th operand corresponds with data register D000.
7. Data Registers D0100–D0105 are used for writing file memory.

Ladder for Initializing the Ethernet Card

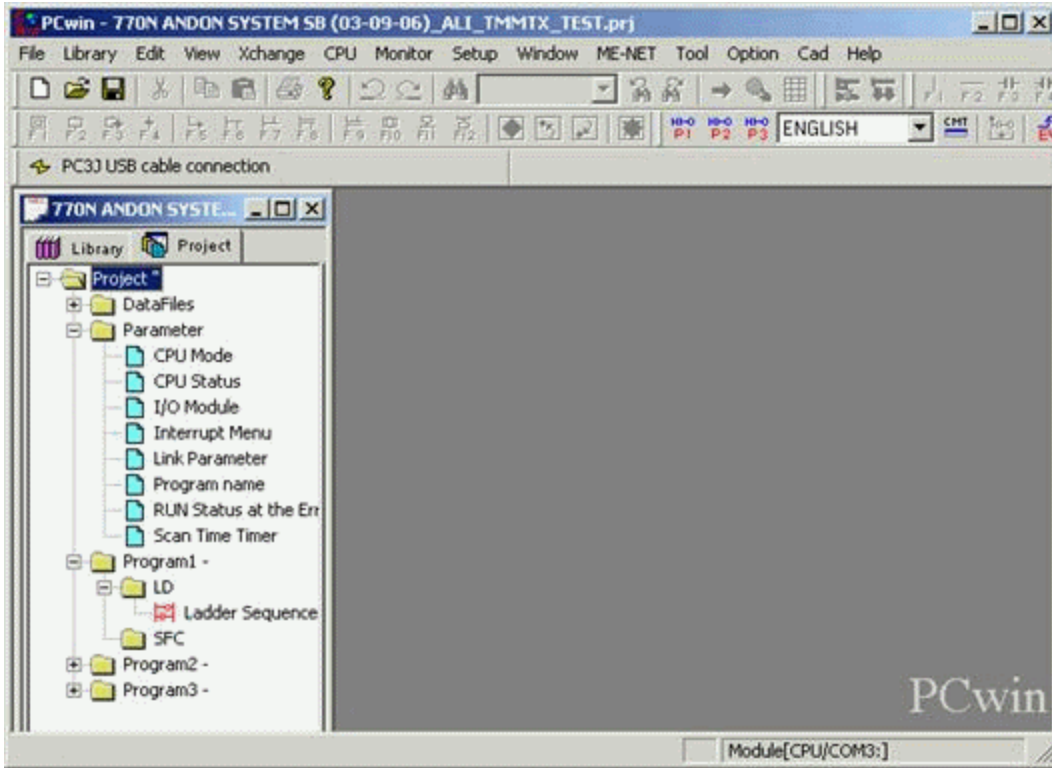


For more information, refer to the *Toyopuc PC2 or PC3 EN-1/F Users Manual*.

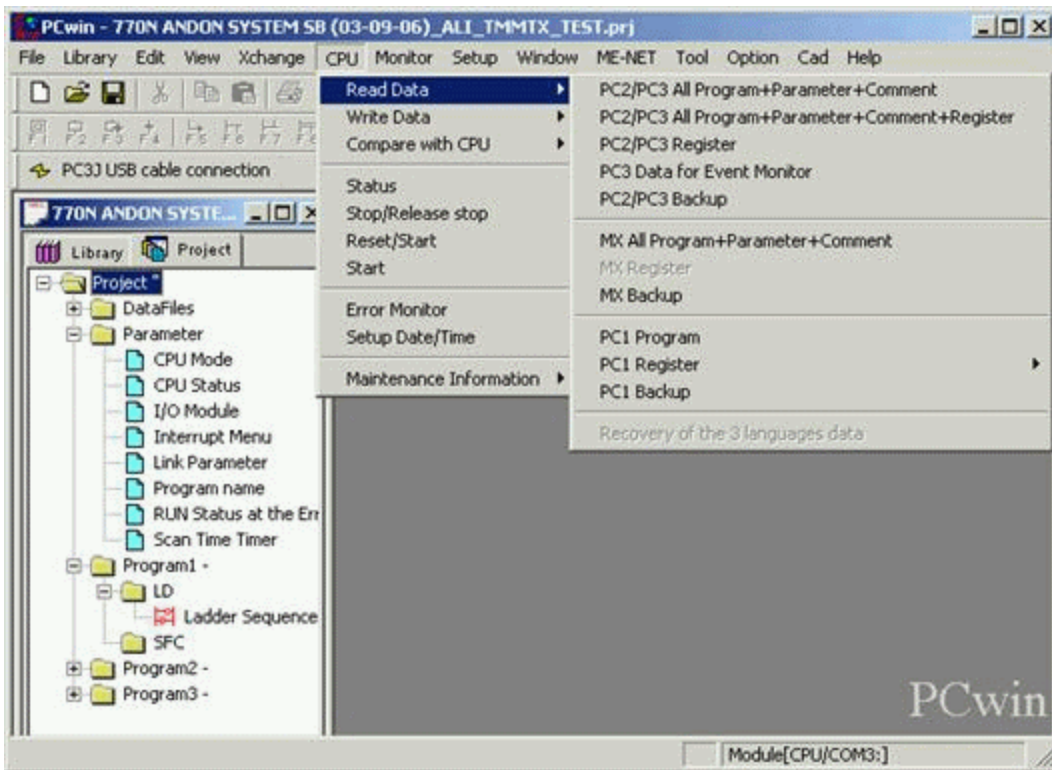
Configuring the FL/ET-T-V2 Ethernet Module

Before the FL/ET-T-V2 card can be used for communications, it needs to be configured to use PCWIN. At this point, users should know how to configure PCWIN to connect to the PLC. For more information, refer to the *Toyopuc FL/ET-T-V2 Ethernet Module Users Manual*.

1. To start, open PCWIN.

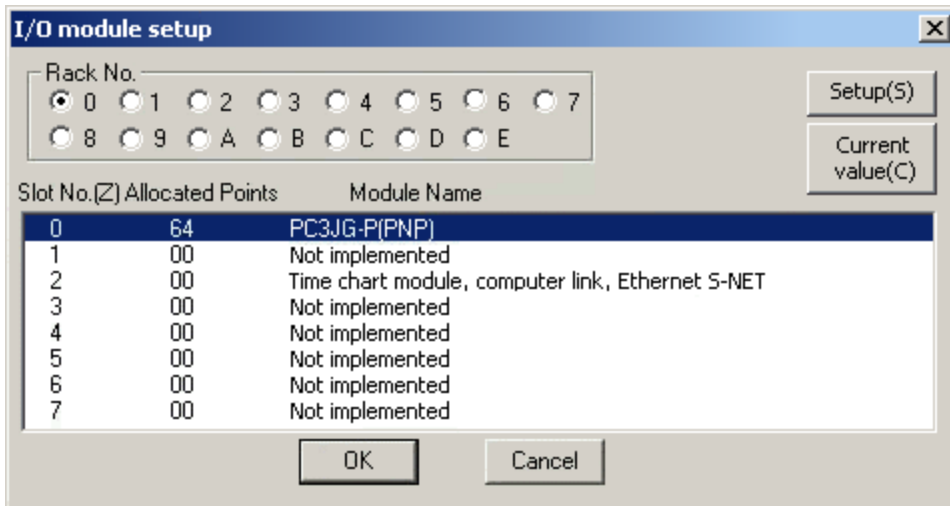


2. Read the existing program and parameters from the PLC by clicking on **CPU | Read Data**. Select the proper option.



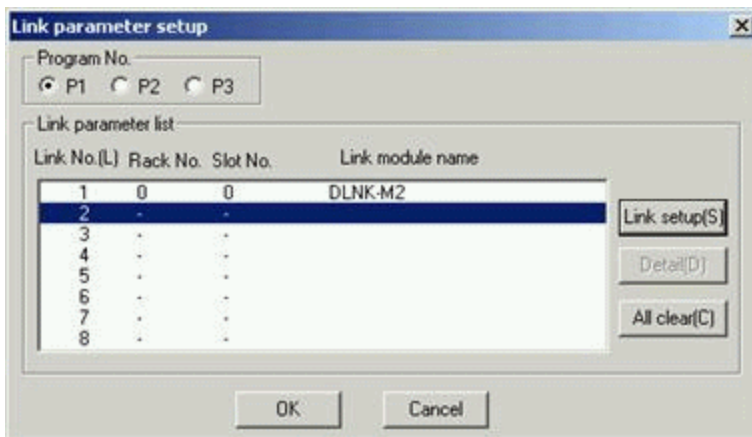
3. Once the ladder is loaded, click on **Project | Parameter** and then select **I/O Module**.

4. Verify that the Ethernet Card is configured in the PLC.

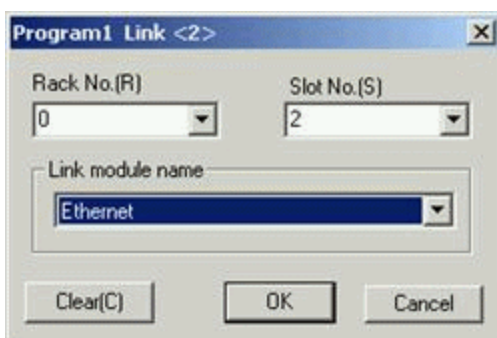


5. Click **OK** to close.

6. Click **Project | Parameter** and then double-click on **Link Parameter**.



7. In the **Program No.** field, select the program that the configuration will be placed in. Click **Link Setup**.

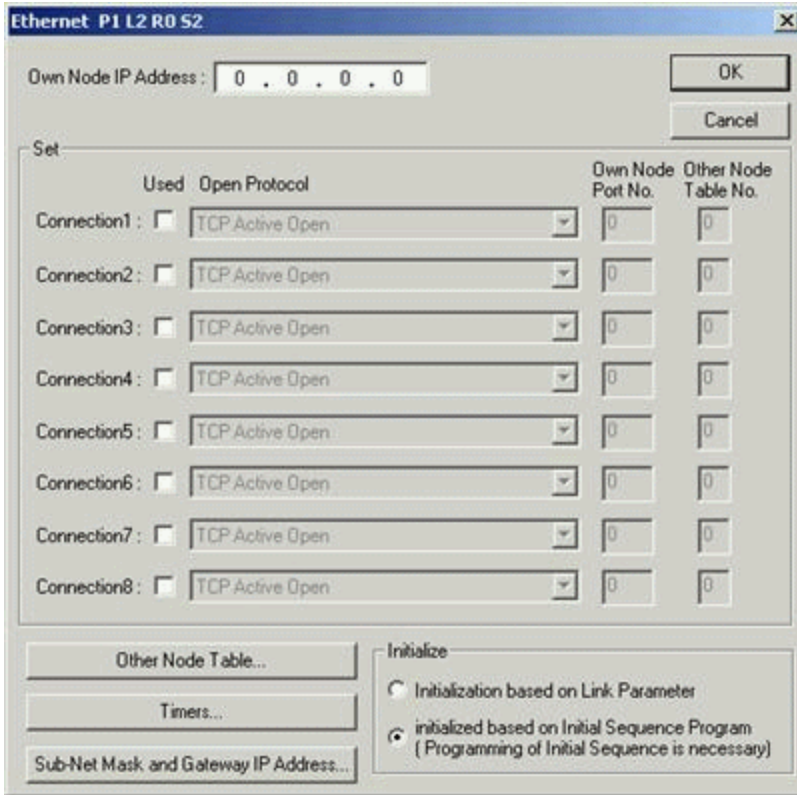


8. In the **ProgramName Link** dialog, select the **Rack No.** and **Slot No.** where the module is located.

9. In the **Link** module name field, select **Ethernet** from the drop-down list. Click **OK**.

10. In the **Link Parameter Setup** dialog, select the new link. Next, click the **Detail** button.

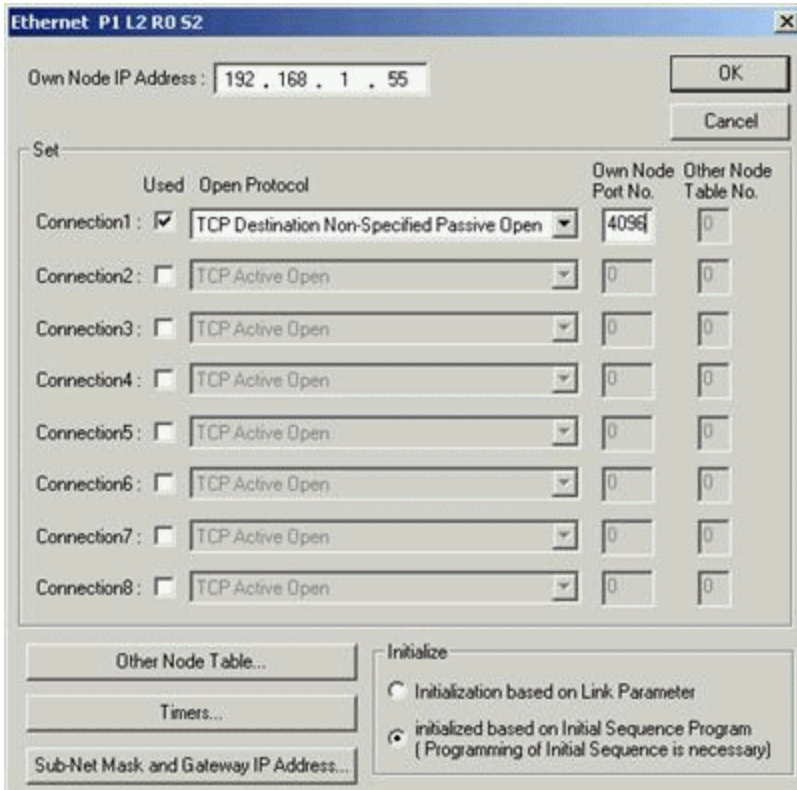
11. Enter the card's IP address in the **Own Node IP Address** field.



12. Check the **Used** checkbox for Connection1. Up to 8 connections can be configured.

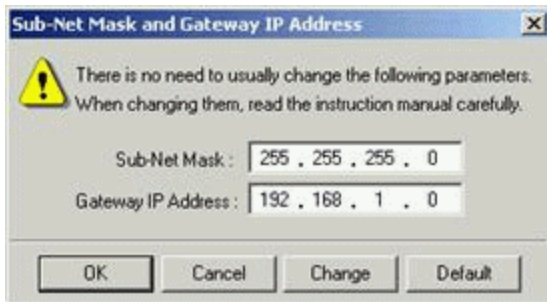
13. In the **Open Protocol** field, select **TCP Destination Non-Specified Passive Open** from the drop-down list.

14. Enter the appropriate value in the **Own Node Port No.** field. In the example shown below, the number 4096 has been entered.

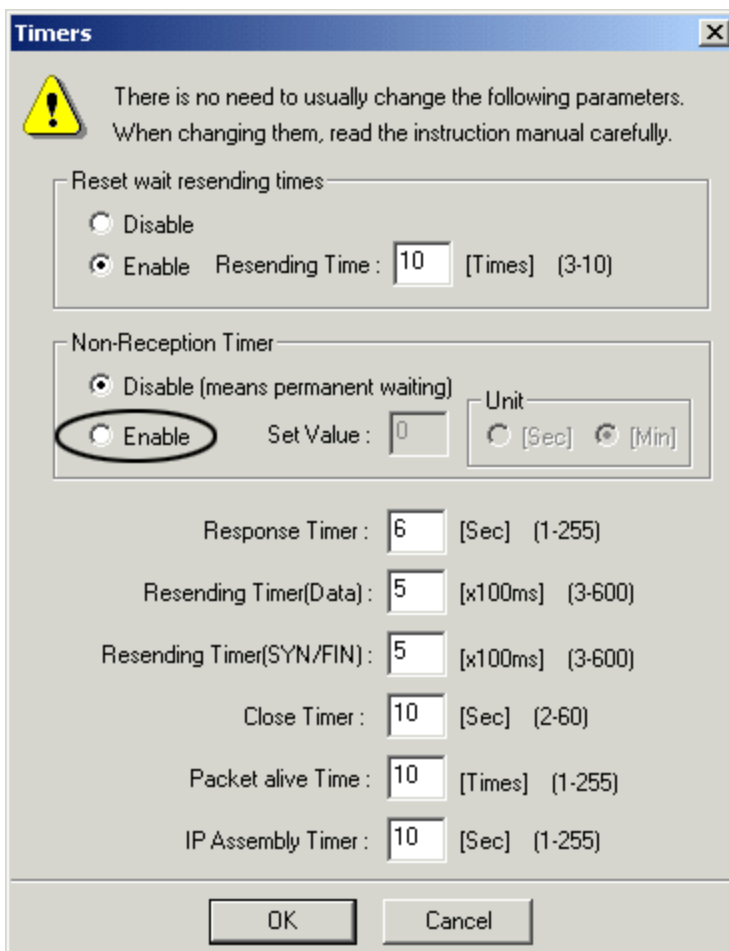


15. Now that the connection is configured, click **Sub-Net Mask and Gateway IP Address**. These values should be set by the IT Manager. For less complex networks, match the sub-net mask and gateway IP address that are configured in the PC's network configuration.

16. Click **OK** when finished.



17. Click on **Timers**. This dialog allows the Ethernet connection to reset if a network error forces a dropped connection between the server and the device. By default, the Non-Reception Timer is set to Disable (which means permanent waiting).



18. Under **Non-Reception Timer**, click **Enable**.

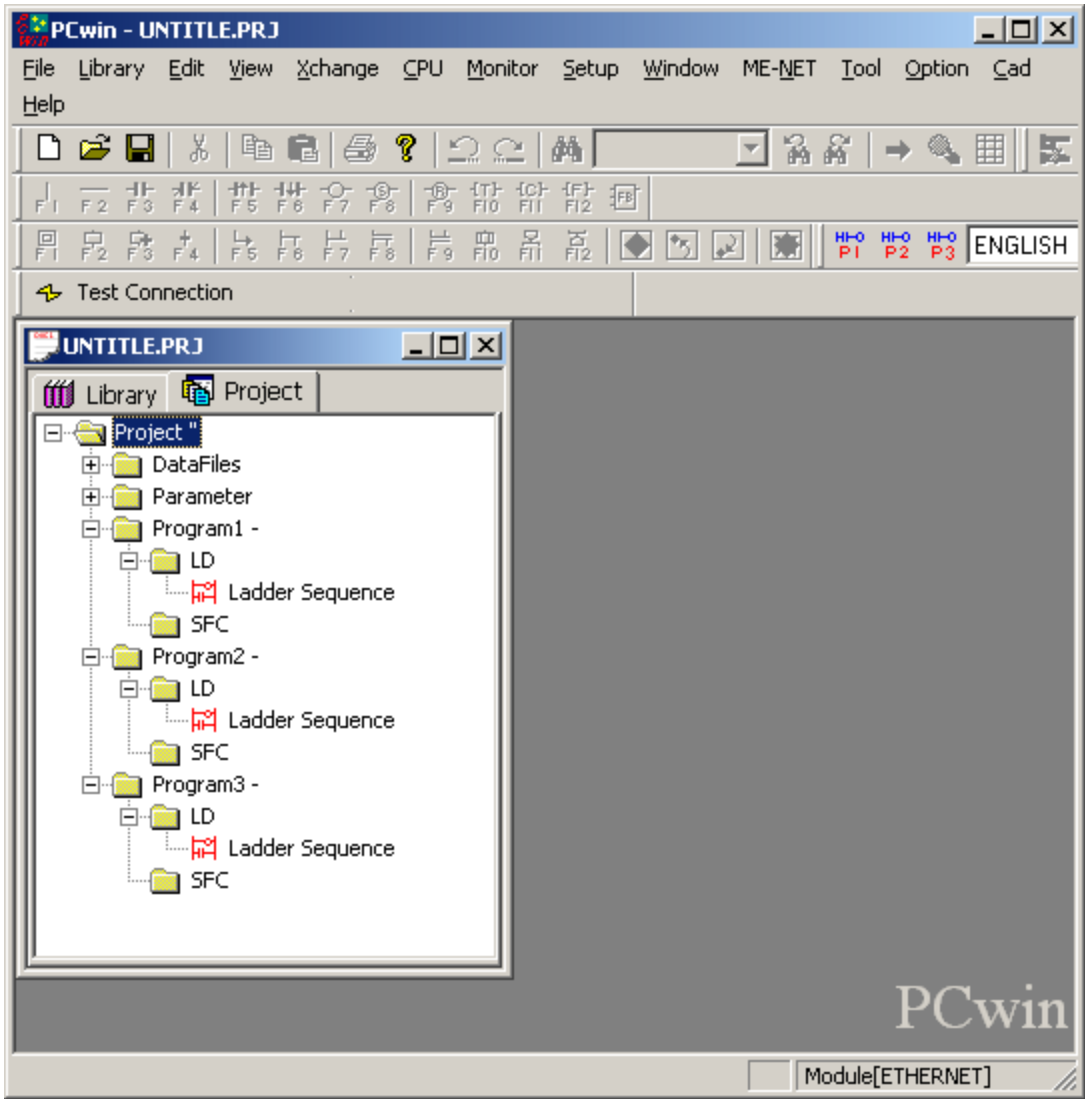
19. To set the timer resolution, enter a value in the **Set Value** field. Under **Unit**, select seconds or minutes. A value of less than a minute is recommended. This setting should not be faster than the poll rate.

20. Click **OK** to finish.

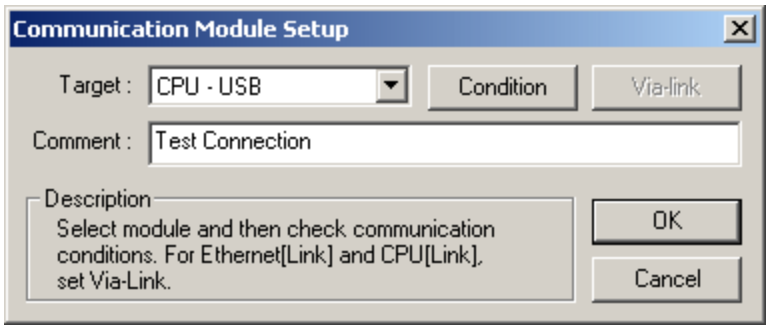
Configuring the PC10G-CPU for Ethernet Communications

Before the PC10G-CPU can be used for Ethernet communications, it must be configured using PCWin version 10 or above. The following example first shows how to configure the built-in Ethernet port L2 and then shows how to connect to the PC with PCWin to the PC10G-CPU using a USB connection.

1. To start, open PCWIN.

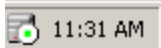


2. To setup the communication between PCwin and PC10G-CPU, click **Setup | Setup Communication Module**. If it is the first time configuring PCwin, select **Addition** and then make the selections as shown below.

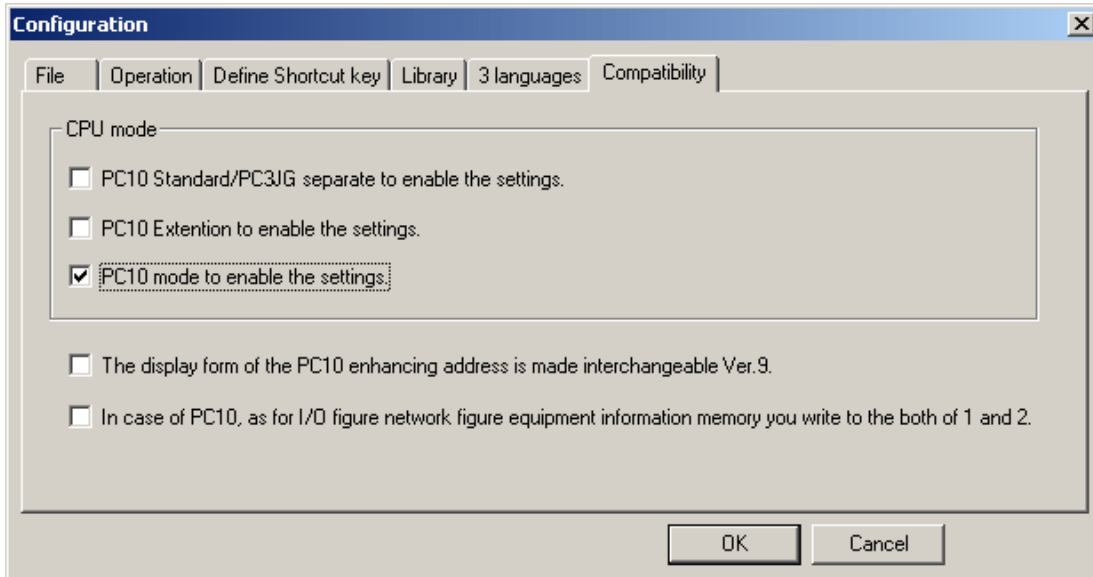


3. Next, make sure that the COM_SERV icon (shown on the bottom right side of the screen) appears as shown below. The red icon indicates that the connection between PCWin and PC10G-CPU hasn't been established yet. There are two possible solutions:

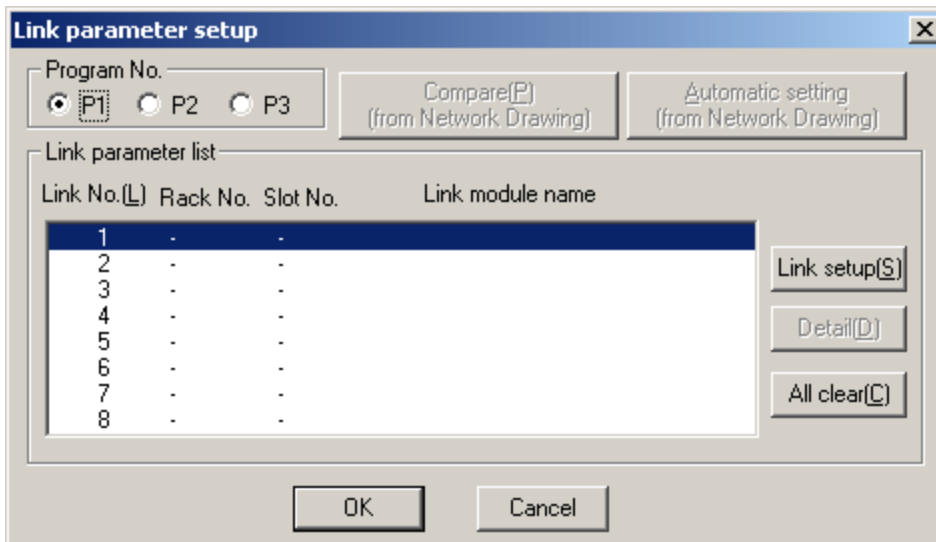
- Check the cable connections.
- Reinstall the USB driver that came with the PCWin setup.



4. **Optional:** To monitor PC10G data from PCWin, go to the menu bar and click **Option | Configuration**. Then, select **Compatibility** and make the selections as shown in the image below.



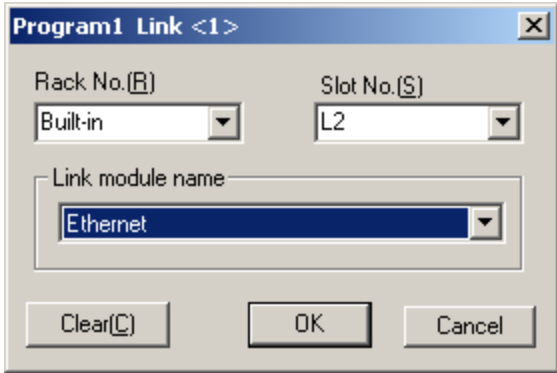
5. Back in the Project Window, select the **Project** tab. Then, click **Parameters | Link Parameter**.



6. Click **Link setup(S)** and make the following selections:

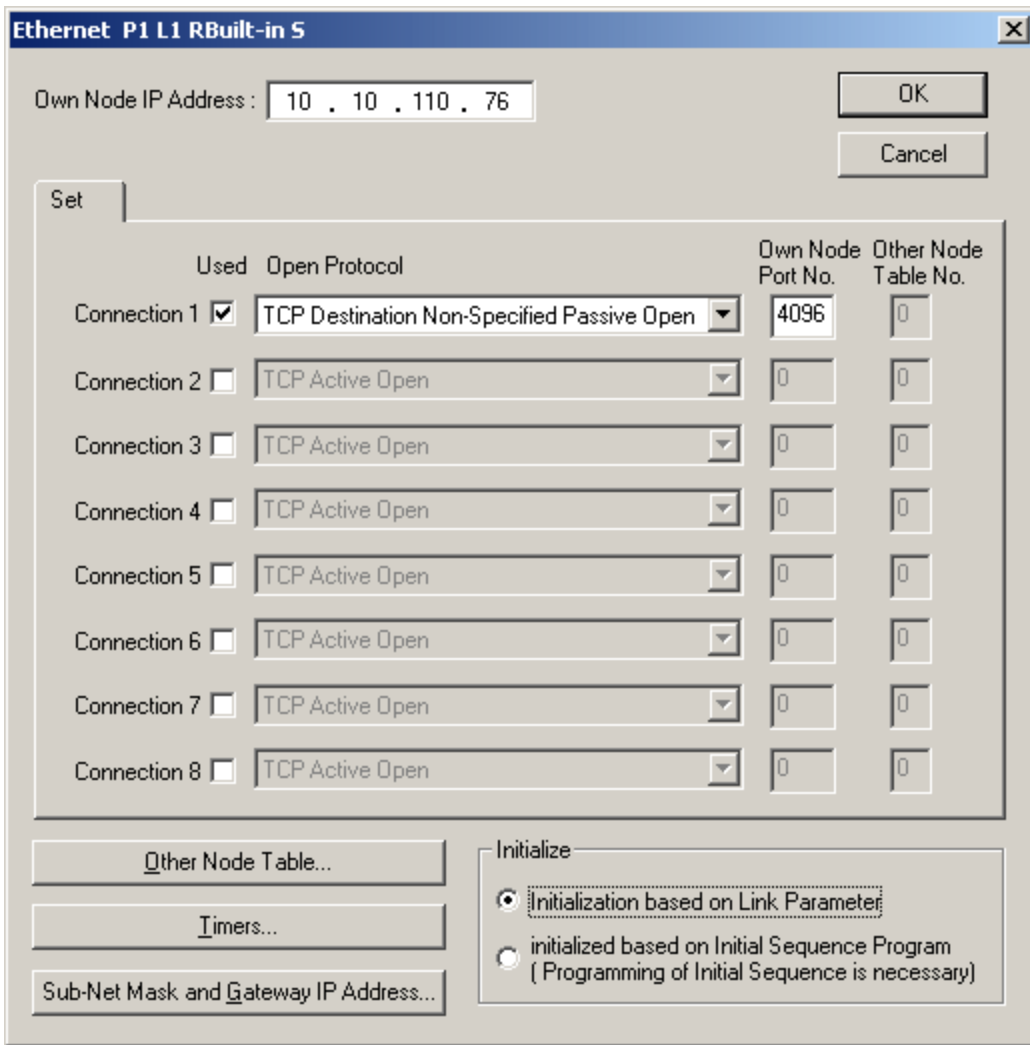
- Rack No.(R) - Built-in
- Slot No. (S) - L2 Link
- Module Name - Ethernet

7. Click **OK**.

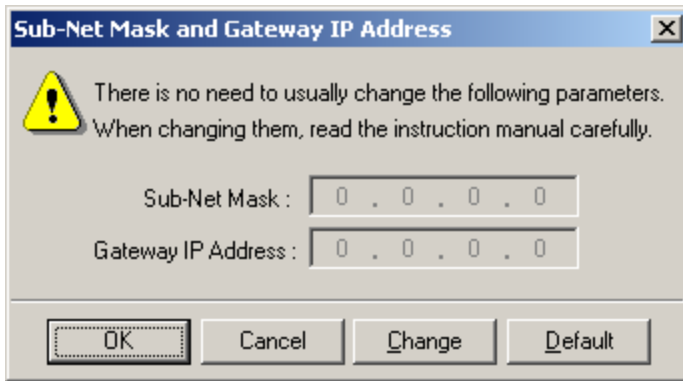


8. Click **Detail(D)**. In this dialog, the following parameters may be specified:

- In **Own Node IP Address**, set the desired IP address of the Ethernet Port.
- In **Own Node Port No.**, set the desired Port Number. In this example, 4096 is used.

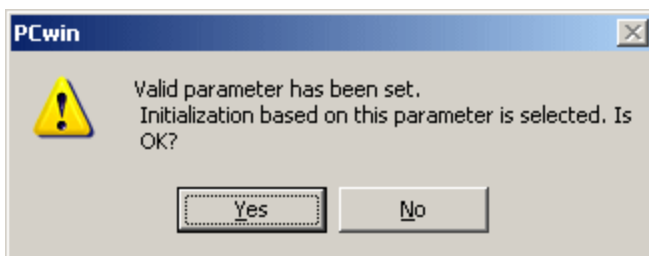


9. Click **Sub-Net Mask and Gateway IP Address** and specify the desired subnet and gateway settings.



10. Once finished, click **OK**.

11. Click **OK** again. Then, click **Yes**.

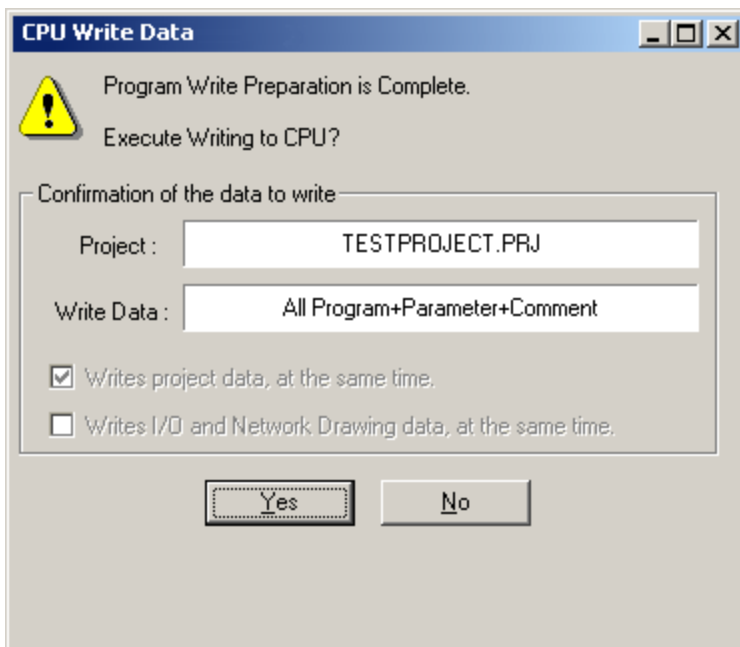


12. Save the project. In this example, the name "TestProject" is used.

Transferring Configuration Settings to the PC10G-CPU

1. Click **CPU | Write Data | All Program+Parameter+Comment**. Alternatively, click **CPU | Write Data | Parameter**. The invoked window should appear as shown below.

Note: If the CPU is in Run Mode, it will need to be stopped. To do so, click **CPU | Stop/Release Stop**.



2. Once the download is complete, the following window should appear.



3. Power cycle the PC10G-CPU for the new settings to take effect.

Data Type Description

Data Type	Description
Boolean	Single bit
Byte	Unsigned 8-bit value bit 0 is the low bit bit 7 is the high bit
Word	Unsigned 16-bit value bit 0 is the low bit bit 15 is the high bit
Short	Signed 16-bit value bit 0 is the low bit bit 14 is the high bit bit 15 is the sign bit
DWord	Unsigned 32-bit value bit 0 is the low bit bit 31 is the high bit
Long	Signed 32-bit value bit 0 is the low bit bit 30 is the high bit bit 31 is the sign bit
BCD	Two byte packed BCD Value range is 0-9999. Behavior is undefined for values beyond this range.
LBCD	Four byte packed BCD Value range is 0-99999999. Behavior is undefined for values beyond this range.

Address Descriptions

The Toyopuc PC3 driver supports the PC2 PLC, PC3 PLC and PC10G PLC. When configuring the OPC Server application, users must choose a PLC model type when defining a device connection. Based on that model selection, two different PLC data addressing modes will be available to access data within the PLC. Select a link from the following list to obtain specific address information for the model of interest.

- [PC2/PC2 Interchange](#)
- [PC3 Device](#)
- [PC10G](#)

PC2/PC2 Interchange Mode Address Descriptions

When the PC2 model has been selected, the Toyopuc Computer Link Protocol supports the following addresses. These address types are only available when using a PC2 PLC or using a PC3 PLC in PC2 Interchange mode. For more information, refer to [Addressing Examples](#).

Note: The valid address range of each memory type depends on the data type being accessed. Please refer to the Syntax and Data Types columns below. The valid range (syntax) is shown on the same line as the data type(s). For example, the valid range for Edge Relay is P0000-P01FF if the data type being accessed is Boolean. If the data type being accessed is byte, word, short or BCD, the valid range is P000-P01F. If the data type is DWord, Long or LBCD, the valid range is P000-P01E. The default data types for dynamically defined tags are shown in **bold**.

Memory Type	Syntax	Data Type	Access
Edge Relay (P)	P0000-P01FF P000-P01F P000-P01E	Boolean Byte*, Word, Short, BCD DWord, Long, LBCD	Read/Write
Keeping Relay (K)	K0000-K02FF K000-K02F K000-K02E	Boolean Byte*, Word, Short, BCD DWord, Long, LBCD	Read/Write
Specific Relay (V)	V0000-V00FF V000-V0F V000-V0E	Boolean Byte*, Word, Short, BCD DWord, Long, LBCD	Read/Write
Timer Bits (T)	T0000-T01FF T000-T01F T000-T01E	Boolean Byte*, Word, Short, BCD DWord, Long, LBCD	Read/Write
Count Bits (C)	C0000-C01FF C000-C01F C000-C01E	Boolean Byte*, Word, Short, BCD DWord, Long, LBCD	Read/Write
Link Relay (L)	L0000-L07FF L000-L07F L000-L07E	Boolean Byte*, Word, Short, BCD DWord, Long, LBCD	Read/Write
I/O Relay (X)	X0000-X07FF X000-X07F X000-X07E	Boolean Byte*, Word, Short, BCD DWord, Long, LBCD	Read/Write
I/O Relay (Y)	Y0000-Y07FF Y000-Y07F Y000-Y07E	Boolean Byte*, Word, Short, BCD DWord, Long, LBCD	Read/Write
Internal Relay (M)	M0000-M07FF M000-M07F M000-M07E	Boolean Byte*, Word, Short, BCD DWord, Long, LBCD	Read/Write
Specific Register (S)	S0000.0...S0000.F-S03FF.0...S03FF.F S0000-S03FF S0000-S03FE	Boolean Byte*, Word , Short, BCD DWord, Long, LBCD	Read/Write
Present Value Register (N)	N0000.0...N0000.F-N01FF.0...N01FF.F N0000-N01FF N0000-N01FE	Boolean Byte*, Word , Short, BCD DWord, Long, LBCD	Read/Write
Link Register (R)	R0000.0...R0000.F-R07FF.0...R07FF.F R0000-R07FF R0000-R07FE	Boolean Byte*, Word , Short, BCD DWord, Long, LBCD	Read/Write
Data Register (D)	D0000.0...D0000.F-D02FFF.0...D2FFF.F D0000-D2FFF D0000-D2FFE	Boolean Byte*, Word , Short, BCD DWord, Long, LBCD	Read/Write

File Register (B)	B0000.0...B0000.F-B01FFF.0...B1FFF.F B0000-B1FFF B0000-B1FFE	Boolean Byte*, Word , Short, BCD DWord, Long, LBCD	Read/Write
-------------------	--	--	------------

*Low/High Byte Modifier

An optional Low (L) or High (H) byte modifier can be appended to any address. This modifier instructs the driver that the low or high byte of the address word is requested. For more information, refer to [Addressing Examples](#).

Note: When adding a static tag with a low/high byte modifier, the data type must be set to Byte. For more information on static vs. dynamic tags consult the OPC Server's online documentation.

Multi-Point Read Support

Multi-point read support allows the Toyopuc Ethernet driver to read data from multiple memory types (based on program number) in a single request. The multi-point read function is available for both the PC3 and PC2 models and can be used across HPC Link or FL-net modules using relay routing. *For more information, refer to [Multi-Point Read Support](#).*

Diagnostics Tags

The Diagnostics Tags provide information on how the Toyopuc Ethernet driver is performing. *For more information, refer to [Diagnostic Tags](#).*

Array Support

All memory types support arrays, which can be of any data type. Only the following exceptions apply:

1. Byte arrays are not supported (this also means that low/high byte modifiers cannot be used with array syntax).
2. Boolean arrays are not supported for bit within word type addresses. For example, addresses like 'S0000.0' cannot be used with array notation. Discrete types support Boolean arrays.
3. Multi-point read is not supported for arrays.

The array size cannot exceed the internal block size of 512 bytes. Array syntax is specified by adding '[r]' (rows) or '[r][c]' at the end of the address string. [r]: rows, [c]: columns.

Addressing Examples

1. Request 'Specific Relay FF' from program 1 --> P1-VFF.
2. Request High Byte of 'Data Register 10' --> D10H.
3. Request 'Data Register 1000' --> D1000.
4. Request Long value (2 consecutive 16 bit registers) starting at 'Link Register 7E' in program 1 --> P1-L7E@LONG (set data type to Long for static tags, or append '@LONG' to address for dynamic tags. For more information on static vs. dynamic tags consult the OPC Server online Help.
5. Request 20 bits starting at 'I/O Relay 256' --> X0256[20](set data type to BOOLEAN for static tags, or append '@BOOLEAN' to address for dynamic tags).
6. Request 24 bits starting at 'Edge Relay 100' --> P0100[4][6](set data type to BOOLEAN for static tags, or append '@BOOLEAN' to address for dynamic tags).
7. Request 16 words starting at 'Specific Register 64' --> S0064[4][4].
8. Request 50 LBCDs starting at 'File Register 6' --> B0006[50](set data type to LBCD for static tags, or append '@LBCD' to address for dynamic tags).

PC3 Address Descriptions

When the PC3 model has been selected, the Toyopuc Computer Link Protocol supports the following addresses. These address types are only available when using a PC3 PLC. For more information, refer to [Addressing Examples](#).

Note: The valid address range of each memory type depends on the data type being accessed. Please refer to the Syntax and Data Types columns below. The valid range (syntax) is shown on the same line as the data type(s). For example, the valid range for Edge Relay is P0000-P01FF if the data type being accessed is Boolean. If the data type being accessed is byte, word, short or BCD, the valid range is P000-P01F. If the data type is DWord, Long or LBCD, the valid range is P000-P01E. The default data types for dynamically defined tags are shown in **bold**.

Memory Type	Syntax*	Data Type	Access
Edge Relay (P)	P0000-P01FF P000-P01F P000-P01E	Boolean Byte**, Word, Short, BCD DWord, Long, LBCD	Read/Write
Keeping Relay (K)	K0000-K02FF K000-K02F K000-K02E	Boolean Byte**, Word, Short, BCD DWord, Long, LBCD	Read/Write
Specific Relay (V)	V0000-V00FF V000-V0F V000-V0E	Boolean Byte**, Word, Short, BCD DWord, Long, LBCD	Read/Write
Timer Bits (T)	T0000-T01FF T000-T01F T000-T01E	Boolean Byte**, Word, Short, BCD DWord, Long, LBCD	Read/Write
Count Bits (C)	C0000-C01FF C000-C01F C000-C01E	Boolean Byte**, Word, Short, BCD DWord, Long, LBCD	Read/Write
Link Relay (L)	L0000-L07FF L000-L07F L000-L07E	Boolean Byte**, Word, Short, BCD DWord, Long, LBCD	Read/Write
I/O Relay (X)	X0000-X07FF X000-X07F X000-X07E	Boolean Byte**, Word, Short, BCD DWord, Long, LBCD	Read/Write
I/O Relay (Y)	Y0000-Y07FF Y000-Y07F Y000-Y07E	Boolean Byte**, Word, Short, BCD DWord, Long, LBCD	Read/Write
Internal Relay (M)	M0000-M07FF M000-M07F M000-M07E	Boolean Byte**, Word, Short, BCD DWord, Long, LBCD	Read/Write
Specific Register (S)	S0000.0...S0000.F-S03FF.0...S03FF.F S0000-S03FF S0000-S03FE	Boolean Byte**, Word , Short, BCD DWord, Long, LBCD	Read/Write
Present Value Register (N)	N0000.0...N0000.F-N01FF.0...N01FF.F N0000-N01FF N0000-N01FE	Boolean Byte**, Word , Short, BCD DWord, Long, LBCD	Read/Write
Link Register (R)	R0000.0...R0000.F-R07FF.0...R07FF.F R0000-R07FF R0000-R07FE	Boolean Byte**, Word , Short, BCD DWord, Long, LBCD	Read/Write
Data Register (D)	D0000.0...D0000.F-D02FFF.0...D2FFF.F D0000-D2FFF D0000-D2FFE	Boolean Byte**, Word , Short, BCD DWord, Long, LBCD	Read/Write
File Register (B)	B0000.0...B0000.F-B01FFF.0...B1FFF.F B0000B1FFF B0000B1FFE	Boolean Byte**, Word , Short, BCD DWord, Long, LBCD	Read/Write

Extended I/O Relay (EX)	EX0000-EX07FF EX000-EX07F EX000-EX07E	Boolean Byte**, Word, Short, BCD DWord, Long, LBCD	Read/Write
Extended I/O Relay (EY)	EY0000-EY07FF EY000-EY07F EY000-EY07E	Boolean Byte**, Word, Short, BCD DWord, Long, LBCD	Read/Write
Extended Internal Relay (EM)	EM0000-EM1FFF EM000-EM1FF EM000-EM1FE	Boolean Byte**, Word, Short, BCD DWord, Long, LBCD	Read/Write
Extended Keep Relay (EK)	EK0000-EK0FFF EK000-EK0FF EK000-EK0FE	Boolean Byte**, Word, Short, BCD DWord, Long, LBCD	Read/Write
Extended Special Relay (EV)	EV0000-EV0FFF EV000-EV0FF EV000-EV0FE	Boolean Byte**, Word, Short, BCD DWord, Long, LBCD	Read/Write
Extended Timer Bits (ET)	ET0000-ET07FF ET000-ET07F ET000-ET07E	Boolean Byte**, Word, Short, BCD DWord, Long, LBCD	Read/Write
Extended Counter Bits (EC)	EC0000-EC07FF EC000-EC07F EC000-EC07E	Boolean Byte**, Word, Short, BCD DWord, Long, LBCD	Read/Write
Extended Link Relay (EL)	EL0000-EL1FFF EL000-EL1FF EL000-EL1FE	Boolean Byte**, Word, Short, BCD DWord, Long, LBCD	Read/Write
Extended Edge Direction (EP)	EP0000-EP0FFF EP000-EP0FF EP000-EP0FE	Boolean Byte**, Word, Short, BCD DWord, Long, LBCD	Read/Write
Extended Data Register (U)	U0000.0...U0000.F -U07FFF.0...U7FFF.F U0000-U7FFF U0000-U7FFE	Boolean Byte**, Word , Short, BCD DWord, Long, LBCD	Read/Write
Extended Timer/Counter Value (EN)	EN0000.0...EN0000.F- EN07FF.0...EN07FF.F EN0000-EN07FF EN0000-EN07FE	Boolean Byte**, Word , Short, BCD DWord, Long, LBCD	Read/Write
Extended Setup Value Register (H)	H0000.0...H0000.F-H07FF.0...H07FF.F H0000-H07FF H0000-H07FE	Boolean Byte**, Word , Short, BCD DWord, Long, LBCD	Read/Write
Extended Special Register (ES)	ES0000.0...ES0000.F- ES07FF.0...ES07FF.F ES0000-ES07FF ES0000-ES07FE	Boolean Byte**, Word , Short, BCD DWord, Long, LBCD	Read/Write
Extended Input Relay (GX)	GX0000-GXFFFF GX000-GX0FFF GX000-GX0FFE	Boolean Byte**, Word, Short, BCD DWord, Long, LBCD	Read/Write
Extended Output Relay (GY)	GY0000-GYFFFF GY000-GY0FFF GY000-GY0FFE	Boolean Byte**, Word, Short, BCD DWord, Long, LBCD	Read/Write
Extended Internal Relay (GM)	GM0000-GMFFFF GM000-GM0FFF GM000-GM0FFE	Boolean Byte**, Word, Short, BCD	Read/Write

DWord, Long, LBCD

***Syntax**

Addresses should be prefixed with "P1-", "P2-" or "P3-" to denote which PLC program in the PC3 contains the desired address. For example, to read data register D10 from program 2 in the PC3, use the following address syntax: P2-D10. If the device is in PC2 Interchange mode, use "P1-" to reference data.

Note: The extended addresses do not use the "P1-", "P2-", or "P3-" program indicator. If that is done, an error message will be generated in the OPC server message window. Extended addresses must be entered without any program number. For example, to request Extended I/O Relay (EX) 6FF, use the following syntax: EX6FF.

****Low/High Byte Modifier**

An optional Low (L) or High (H) byte modifier can be appended to any address. This modifier instructs the driver that the low or high byte of the address word is requested. For more information, refer to [Addressing Examples](#).

Note: When adding a static tag with a low/high byte modifier, the data type must be set to Byte. For more information on static vs. dynamic tags, consult the OPC Server online help.

Multi-Point Read Support

Multi-point read support allows the Toyopuc Ethernet driver to read data from multiple memory types (based on program number) in a single request. The multi-point read function is available for both the PC3 and PC2 models and can be used across HPC Link or FL-net modules using relay routing. *For more information, refer to [Multi-Point Read Support](#).*

Diagnostics Tags

The Diagnostics Tags provide information on how the Toyopuc PC3/PC2 Ethernet driver is performing. For more information, refer to [Diagnostic Tags](#).

Array Support

All memory types support arrays, which can be of any data type. Only the following exceptions apply:

- Byte arrays are not supported (this also means that low/high byte modifiers cannot be used with array syntax).
- Boolean arrays are not supported for bit within word type addresses. For example, addresses like 'S0000.0' cannot be used with array notation. Discrete types support Boolean arrays.
- Multi-point read is not supported for arrays.

The array size cannot exceed the internal block size of 512 bytes. Array syntax is specified by adding '[r]' (rows) or '[r][c]' at the end of the address string. [r]: rows, [c]: columns.

Addressing Examples

1. Request 'Specific Relay FF' from program 1 --> P1-VFF.
2. Request High Byte of 'Data Register 10' from program 2 --> P2-D10H.
3. Request Data Register 1000 from program 3 --> P3-D1000.
4. Request Extended I/O Relay 6FF --> EX6FF.
5. Request Long value (2 consecutive 16 bit registers) starting at 'Link Register 7E' in program 1 --> P1-L7E@LONG (set data type to Long for static tags, or append '@LONG' to address for dynamic tags. For more information on static vs. dynamic tags consult the OPC Server online Help.
6. Request 20 bits starting at 'I/O Relay 256' from program 2 --> P2-X0256[20] (set data type to BOOLEAN for static tags, or append '@BOOLEAN' to address for dynamic tags).
7. Request 24 bits starting at 'Edge Relay 100' from program 1 --> P1-P0100[4][6] (set data type to BOOLEAN for static tags, or append '@BOOLEAN' to address for dynamic tags).
8. Request 16 words starting at 'Specific Register 64' from program 3 --> P3-S0064[4][4].
9. Request 50 LBCDs starting at 'File Register 6' from program 1 --> P1-B0006[50](set data type to LBCD for static tags, or append '@LBCD' to address for dynamic tags).

PC10G Address Descriptions

When the PC10G model has been selected, the Toyopuc Computer Link Protocol supports the following addresses. These address types are only available when using a PC10G PLC. For more information, refer to [Addressing Examples](#).

Note 1: The PC10G model also accepts arrays. For example, U0000[2][2].

Note 2: The valid address range of each memory type depends on the data type being accessed. Please refer to the Syntax and Data Types columns below. The valid range (syntax) is shown on the same line as the data type (s). For example, the valid range for Edge Relay is P0000-P01FF if the data type being accessed is Boolean. If the data type being accessed is byte, word, short or BCD, the valid range is P000-P01F. If the data type is DWord, Long or LBCD, the valid range is P000-P01E. The default data types for dynamically defined tags are shown in **bold**.

Memory Type	Syntax*	Data Type	Access
Edge Relay (P)	P000-P1FF P00-P1F P00-P1E	Boolean Byte**, Word, Short, BCD DWord, Long, LBCD	Read/Write
Edge Relay (P)	P1000-P17FF P100-P17F P100-P17E	Boolean Byte**, Word, Short, BCD DWord, Long, LBCD	Read/Write
Keeping Relay (K)	K000-K2FF K00-K0F K00-K0E	Boolean Byte**, Word, Short, BCD DWord, Long, LBCD	Read/Write
Specific Relay (V)	V00-VFF V0-VF V0-VE	Boolean Byte**, Word, Short, BCD DWord, Long, LBCD	Read/Write
Specific Relay (V)	V1000-V17FF V100-V17F V100-V17E	Boolean Byte**, Word, Short, BCD DWord, Long, LBCD	Read/Write
Timer Bits (T)	T000-T1FF T00-T1F T00-T1E	Boolean Byte**, Word, Short, BCD DWord, Long, LBCD	Read/Write
Timer Bits (T)	T1000-T17FF T100-T17F T100-T17E	Boolean Byte**, Word, Short, BCD DWord, Long, LBCD	Read/Write
Count Bits (C)	C000-C1FF C00-C1F C00-C1E	Boolean Byte**, Word, Short, BCD DWord, Long, LBCD	Read/Write
Count Bits (C)	C1000-C17FF C100-C17F C100-C17E	Boolean Byte**, Word, Short, BCD DWord, Long, LBCD	Read/Write
Link Relay (L)	L000-L7FF L00-L7F L00-L7E	Boolean Byte**, Word, Short, BCD DWord, Long, LBCD	Read/Write
Link Relay (L)	L1000-L2FFF L100-L2FF L100-L2FE	Boolean Byte**, Word, Short, BCD DWord, Long, LBCD	Read/Write
I/O Relay (X)	X000-X7FF X00-X7F X00-X7E	Boolean Byte**, Word, Short, BCD DWord, Long, LBCD	Read/Write
I/O Relay (Y)	Y000-Y7FF Y00-Y7F Y00-Y7E	Boolean Byte**, Word, Short, BCD DWord, Long, LBCD	Read/Write
Internal Relay (M)	M000-M7FF M00-M7F M00-M7E	Boolean Byte**, Word, Short, BCD DWord, Long, LBCD	Read/Write
Internal Relay (M)	M1000-M17FF M100-M17F M100-M17E	Boolean Byte**, Word, Short, BCD DWord, Long, LBCD	Read/Write
Specific Register (S)	S000.0-S3FF.F S000-S3FF	Boolean Byte**, Word , Short, BCD	Read/Write

	S000-S3FE	DWord, Long, LBCD	
Specific Register (S)	S1000.0-S13FF.F S1000-S13FF S1000-S13FE	Boolean Byte**, Word , Short, BCD DWord, Long, LBCD	Read/Write
Present Value Register (N)	N000.0-N1FF.F N000-N1FF N000-N1FE	Boolean Byte**, Word , Short, BCD DWord, Long, LBCD	Read/Write
Present Value Register (N)	N1000.0-N17FF.F N1000-N17FF N1000-N17FE	Boolean Byte**, Word , Short, BCD DWord, Long, LBCD	Read/Write
Link Register (R)	R000.0-R7FF.F R000-R7FF R000-R7FE	Boolean Byte**, Word , Short, BCD DWord, Long, LBCD	Read/Write
Data Register (D)	D0000.0-D2FFF.F D0000-D2FFF D0000-D2FFE	Boolean Byte**, Word , Short, BCD DWord, Long, LBCD	Read/Write
FB Escape Area (JL)	JL0000.0-JL1FFF.F JL0000-JL1FFF JL0000-JL1FFE	Boolean Byte**, Word , Short, BCD DWord, Long, LBCD	Read/Write
SFC (JS)	JS0000.0-JSFFF.F JS0000-JSFFF JS0000-JSFFE	Boolean Byte**, Word , Short, BCD DWord, Long, LBCD	Read/Write
Extended I/O Relay (EX)	EX000-EX7FF EX00-EX7F EX00-EX7E	Boolean Byte**, Word , Short, BCD DWord, Long, LBCD	Read/Write
Extended I/O Relay (EY)	EY000-EY7FF EY00-EY7F EY00-EY7E	Boolean Byte**, Word , Short, BCD DWord, Long, LBCD	Read/Write
Extended Internal Relay (EM)	EM0000-EM1FFF EM000-EM1FF EM000-EM1FE	Boolean Byte**, Word , Short, BCD DWord, Long, LBCD	Read/Write
Extended Keep Relay (EK)	EK000-EKFFF EK00-EKFF EK00-EKFE	Boolean Byte**, Word , Short, BCD DWord, Long, LBCD	Read/Write
Extended Special Relay (EV)	EV000-... EV00-EVFF EV00-EVFE	Boolean Byte**, Word , Short, BCD DWord, Long, LBCD	Read/Write
Extended Timer Bits (ET)	ET000-ET7FF ET00-ET7F ET00-ET7E	Boolean Byte**, Word , Short, BCD DWord, Long, LBCD	Read/Write
Extended Counter Bits (EC)	EC000-EC7FF EC00-EC7F EC00-EC7E	Boolean Byte**, Word , Short, BCD DWord, Long, LBCD	Read/Write
Extended Link Relay (EL)	EL0000-EK1FFF EL000-EK1FF EL000-EK1FE	Boolean Byte**, Word , Short, BCD DWord, Long, LBCD	Read/Write
Extended Edge Direction (EP)	EP000-EPFFF EP00-EPFF EP00-EPFE	Boolean Byte**, Word , Short, BCD DWord, Long, LBCD	Read/Write
Extended Data Register (U)	U000000-U1FFFF.F U00000-U1FFFF U00000-U1FFFE	Boolean Byte**, Word , Short, BCD DWord, Long, LBCD	Read/Write
Extended Timer/Counter Value (EN)	EN0000-EN7FFF EN000-EN7FF EN000-EN7FE	Boolean Byte**, Word , Short, BCD DWord, Long, LBCD	Read/Write
Extended Setup Value Register (H)	H0000-H7FFF H000-H7FF H000-H7FE	Boolean Byte**, Word , Short, BCD DWord, Long, LBCD	Read/Write
Extended Special Register (ES)	ES0000-ES7FFF ES000-ES7FF ES000-ES7FE	Boolean Byte**, Word , Short, BCD DWord, Long, LBCD	Read/Write
Extended Input Relay	GX0000-GXFFFF	Boolean	Read/Write

(GX)	GX000-GXFFF GX000-GXFFE	Byte***, Word, Short, BCD DWord, Long, LBCD	
Extended Output Relay (GY)	GY0000-GYFFFF GY000-GYFFF GY000-GYFFE	Boolean Byte**, Word, Short, BCD DWord, Long, LBCD	Read/Write
Extended Internal Relay (GM)	GM0000-GMFFFF GM000-GMFFF GM000-GMFFE	Boolean Byte**, Word, Short, BCD DWord, Long, LBCD	Read/Write
Extended Buffer Register (EB)	EB00000.0EB3FFFF.F EB00000-EB3FFFF EB00000-EB3FFFE	Boolean Byte**, Word , Short, BCD DWord, Long, LBCD	Read/Write
Extended Flash Register (FR)	FR000000.0FR1FFFFF.F FR000000-FR1FFFFF FR000000-FR1FFFFE	Boolean Byte**, Word , Short, BCD DWord, Long, LBCD	Read/Write

*Syntax

Addresses should be prefixed with "P1-", "P2-" or "P3-" to denote which PLC program in the PC3 contains the desired address. For example, to read data register D10 from program 2 in the PC3, use the following address syntax: P2-D10. If the device is in PC2 Interchange mode, use "P1-" to reference data.

Note: The extended addresses do not use the "P1-", "P2-", or "P3-" program indicator. If that is done, an error message will be generated in the OPC server message window. Extended addresses must be entered without any program number. For example, to request Extended I/O Relay (EX) 6FF, use the following syntax: EX6FF.

**Low/High Byte Modifier

An optional Low (L) or High (H) byte modifier can be appended to any address. This modifier instructs the driver that the low or high byte of the address word is requested. For more information, refer to [Addressing Examples](#).

Note: When adding a static tag with a low/high byte modifier, the data type must be set to Byte. For more information on static vs. dynamic tags, consult the OPC Server's online documentation.

Multi-Point Read Support

Multi-point read support allows the Toyopuc Ethernet driver to read data from multiple memory types (based on program number) in a single request. The multi-point read function is available for the PC10G model and can be used across HPC Link or FL-net modules using relay routing. For more information, refer to [Multi-Point Read Support](#).

Diagnostics Tags

Diagnostics tags provide information on how the Toyopuc PC3/PC2 Ethernet driver is performing. For more information, refer to Diagnostic Tags.

Array Support

All memory types support arrays, which can be of any data type. The following exceptions apply:

- Byte arrays are not supported (this also means that low/high byte modifiers cannot be used with array syntax).
- Boolean arrays are not supported for bit-within-word type addresses. For example, 'S0000.0' cannot be used with array notation. Discrete types support Boolean arrays.
- Multi-point read is not supported for arrays.

The array size cannot exceed the internal block size of 512 bytes. Array syntax is specified by adding '[r]' (rows) or '[r][c]' at the end of the address string. [r]: rows, [c]: columns.

Addressing Examples

1. Request 'Specific Relay 100' from program 1 --> P1-V100.
2. Request 'Edge Relay 1000' from program 2 --> P2-P1000.
3. Request High Byte of 'Data Register 10' from program 2 --> P2-D10H.
4. Request Data Register 1000 from program 3 --> P3-D1000.

5. Request Extended I/O Relay 6FF --> EX6FF.
6. Request Extended Buffer Register 17FFF --> EB17FFF.
7. Request Long Value (2 consecutive 16 bit registers) starting at 'Link Register 7F' in program 1 --> P1-L7F@LONG (set data type to Long for static tags or append '@LONG' to address for dynamic tags).

Note: For more information on static vs. dynamic tags, refer to the OPC Server's help documentation.

Error Descriptions

The following categories of messages may be generated. Click on a link for a list of messages.

[Address Validation](#)

[Device Status Messages](#)

[Device Error Codes](#)

Address Validation

The following error/warning messages may be generated. Click on the link for a description of the message.

[Missing address.](#)

[Device address <address> contains a syntax error.](#)

[Address <address> is out of range for the specified device or register.](#)

[Data Type <type> is not valid for device address <address>.](#)

[Device address <address> is read only.](#)

[Array size is out of range for address <address>.](#)

[Array support is not available for the specified address: <address>.](#)

Missing address.

Error Type:

Warning

Possible Cause:

A tag address that has been specified dynamically has no length.

Solution:

Re-enter the address in the client application.

Device address <address> contains a syntax error.

Error Type:

Warning

Possible Cause:

A tag address that has been specified dynamically contains one or more invalid characters.

Solution:

Re-enter the address in the client application.

Address <address> is out of range for the specified device or register

Error Type:

Warning

Possible Cause:

A tag address that has been specified dynamically references a location that is beyond the range of supported locations for the device.

Solution:

Verify the address is correct; if it is not, re-enter it in the client application.

Data Type <type> is not valid for device address <address>.

Error Type:

Warning

Possible Cause:

A tag address that has been specified dynamically has been assigned an invalid data type.

Solution:

Modify the requested data type in the client application.

Device address <address> is read only.

Error Type:

Warning

Possible Cause:

A tag address that has been specified dynamically has a requested access mode that is not compatible with what the device supports for that address.

Solution:

Change the access mode in the client application.

Array size is out of range for address <address>.

Error Type:

Warning

Possible Cause:

A tag address that has been specified statically is requesting an array size that is too large for the address type or block size of the driver.

Solution:

Re-enter the address in the client application to specify either a smaller value for the array or a different starting point.

Array support is not available for the specified address: <address>.

Error Type:

Warning

Possible Cause:

A tag address that has been specified statically contains an array reference for an address type that doesn't support arrays.

Solution:

Either re-enter the address in the client application to remove the array reference or correct the address type.

Device Status Messages

The following error/warning messages may be generated. Click on the link for a description of the message.

[Device <device name> is not responding.](#)
[Unable to write to <address> on device <device name>.](#)

Device <device name> is not responding.

Error Type:

Serious

Possible Cause:

1. The driver cannot create a socket connection between the device and the Host PC.
2. The response from the device took longer to receive than the amount of time specified in the "Request Timeout" device setting.
3. The IP address for the device is incorrect.
4. The TCP/IP Port specified in device settings is incorrect.

Solution:

1. Verify that the Ethernet connections between the PC and the network are functional.
2. Increase the Request Timeout setting so that the entire response can be handled.

3. Verify that the Ethernet connections between the device and the network are functional.
4. Verify that the specified IP address matches the Device IP.
5. Verify that the specified TCP/IP Port matches the port used by the device.

Unable to write to <address> on device <device name>.

Error Type:

Serious

Possible Cause:

1. The driver cannot create a socket connection between the device and the Host PC.
2. The IP address for the device is incorrect.
3. The TCP/IP Port specified in device settings is incorrect.

Solution:

1. Verify that the Ethernet connections between the PC and the network are functional.
2. Verify that the Ethernet connections between the device and the network are functional.
3. Verify that the specified IP address matches the Device IP.
4. Verify that the specified TCP/IP Port matches the port used by the device.

Device Error Codes

The following error/warning messages may be generated. Click on the link for a description of the message.

Device Error Codes

[Error Response Data: Error Code Table](#)

Error Response Data: Error Code Table

Error Code	Error Description
11	Inability to process data because of faulty CPU Module Hardware.
20	Fixed Data (ENQ) within relay command is not "05."
21	Faulty transfer number (there is erroneous transfer byte number within the relay command).
23	Erroneous command code.
24	Erroneous subcommand code.
25	Erroneous command-format data byte.
26	Erroneous function-call operand number.
31	Attempting to write data into the field where any writing is prohibited during a sequence operation or to use the function call (which is protected from any execution) during a sequence operation.
32	A command that is defeated during a stop continuity is activated during a stop continuity.
33	Attempting to execute a debug function call despite non-debug mode.
34	Access prohibited owing to access-prohibited configuration.
35	Non-executable owing to execution-priority limiting configuration.
36	Non-executable owing to execution-priority limiting configuration by another device.
39	Attempting to start scanning without any reset after writing I/O point-number parameters or I/O allocation point-number parameters.
3C	During a fatal failure, a command has issued that is not executable during a fatal failure.
3D	Non-executable due to competing process while a different-factor command is executed.
3E	Non-executable command due to reset existence.
3F	Non-executable command due to stop duration.
40	Address of a reading/writing command or of "address+data number" of a command is out of range.
41	Word/byte number is out of range.
42	Non-designated data is sent.
43	Erroneous function/call operand.
52	Though any timer or counter is employed, a command for reading/writing the set/recent values is issued.
66	No reply is sent from link module with the link exchange No. specified by a relay command (owing to no existence of specified link module, power OFF, faulty circuit, or etc.).
70	Non-executable module with the link exchange No. specified by a relay command (owing to erroneous link No. designation or faulty link module).
72	No reply is sent from link module with the link exchange No. specified by relay command (owing to no existence of specified link module, power OFF, faulty circuit, or etc.).
73	Multiple relay commands were issued to the same link module from the CPU module and the link module could not process the commands. Send commands again.

Note: Codes taken from Toyopuc document: [TOYOPUC PC3J/PC2J FL/ET-T-V2 Instruction Manual](#).

Index

A

Address <address> is out of range for the specified device or register 29
Address Descriptions 20-21
Address Validation 29
Addressing Examples 27
Array size is out of range for address <address>. 30
Array Support 27
Array support is not available for the specified address: <address>. 30

B

BCD 19
Boolean 19

C

Configuration Ladder for EN-I/F Ethernet Module 8
Configuring the FL/ET-T-V2 Ethernet Module 9
Configuring the PC10G-CPU for Ethernet Communications 14

D

Data Type <type> is not valid for device address <address>. 29
Data Types Description 19
Device <device name> is not responding. 30
Device address <address> contains a syntax error. 29
Device address <address> is read only. 30
Device Error Codes 32
Device ID 4
Device Setup 4
Device Status Messages 30
Diagnostics Tags 5, 27
DWord 19

E

Error Descriptions 29
Error Response Data: Error Code Table 32

L

LBCD 19

Long 19

M

Missing address. 29

Multi-Point Read Support 6

N

Network 4

O

Overview 3

P

PC10G Address Descriptions 25

PC2/PC2 Interchange Mode Address Descriptions 20

S

Short 19

U

Unable to write tag <address> on device <device name>. 31

W

Word 19