

KEPServerEX Client Connectivity Guide

For Iconics Genesis32



KTSM-00004
v. 1.03

KEPWARE END USER LICENSE AGREEMENT AND LIMITED WARRANTY

The software accompanying this license agreement (the Software) is the property of Kepware Inc, and is protected by United States and International Copyright laws and International treaty provisions. No ownership rights are granted by this Agreement or possession of the Software. Therefore, you must treat the Licensed Software like any other copyrighted material (e.g., a book or musical recording), except that you may make a single copy for backup or archival purposes. Your rights and obligations in its use are described as follows:

1. You may use and display this software on a single computer.
2. You may make one copy of the software for archival purposes or you may copy the software onto your hard disk and hold the original for archival purposes.
3. You may not modify or attempt to reverse engineer the software, or make any attempt to change or even examine the source code of the software.
4. You may transfer the software to another computer using the utilities provided. However, the software must be used on only a single computer at one time.
5. You may not give or distribute copies of the software or written materials associated with the software to others.
6. You may not sub-license, sell, or lease the software to any person or business.

Return Policy

The original licensee of the software can return it within sixty (60) days of purchase. Please call us for a Return Material Authorization Number.

Limited Warranty

Kepware does not warrant that the Software will be error free, that it will satisfy your planned applications or that all defects in the Software can be corrected. If Kepware provides information or assistance regarding the use of the Software or otherwise, Kepware is not assuming the role of engineering consultant. Kepware disclaims responsibility for any errors or omissions arising in connection with engineering in which its Software or such information or assistance is used.

The foregoing is the sole and exclusive warranty offered by Kepware.

Kepware disclaims all other warranties, express or implied, including but not limited to the implied warranties of merchantability and fitness for a particular purpose, with regard to the licensed software and all accompanying materials.

In no event shall Kepware be liable for incidental or consequential damages, including lost profit, lost savings, lost opportunities, or other incidental or consequential damages arising out of the use or inability to use the licensed software, even if Kepware has been advised of the possibility of such damages.

Kepware's entire liability shall be, at Kepware's option, either (a) return of the price paid for the Software (or component), or (b) repair or replacement of the Software (or component) that does not meet Kepware's Limited Warranty and which is returned to Kepware within the warranty period. This shall be the sole and exclusive obligation of Kepware and your sole and exclusive remedy with respect to any such failure. The Limited Warranty is void if failure of the Software (or component) has resulted from accident, abuse or misapplication.

Support

Kepware provides *unlimited e-mail* support for all Software whether a demo or registered license. Kepware will provide a total of *two hours* free phone support for all registered Software after paying the applicable license fees. Kepware will provide *unlimited phone* support so long as you have paid Kepware any applicable maintenance or support fees and subject to the terms of those agreements. All corrections and maintenance releases will be made available through Kepware's Internet site. All major product releases of the Software are subject to upgrade fees. At no time will on-site support be provided without advance payment to Kepware for a minimum of two days on-site engineering support services, plus all expenses.

©Kepware Technologies

Kepware Technologies
P.O. Box 579
Portland, Maine 04112
www.kepware.com

Kepware and KEPServerEX are trademarks of Kepware Technologies. Other company and product names mentioned herein are the trademarks or registered trademarks of their respective owners.

Table of Contents

INTRODUCTION TO KEPSERVEREX.....	1
ACCESSING KEPSERVEREX	1
USING KEPSERVEREX DRIVERS.....	2
ICONICS' GENESIS32® AS AN OPC CLIENT	3
CONNECT TO THE SERVER FROM GENESIS32 COMPONENTS	3
<i>Select a Process Point</i>	<i>4</i>
Browse for an Available Server.....	4
Select Tag from Browser	5
<i>Check the OPC Connection and View Server Data.....</i>	<i>8</i>
USING KEPWARE'S OPC QUICK CLIENT	9

Introduction to KEPServerEX

KEPServerEX is a 32 bit windows application that provides a means of bringing data and information from a wide range of industrial devices and systems into client applications on your windows PC. KEPServerEX falls under the category of a "Server" application. It is very common to hear the term "client/server application" in use across many software disciplines and business segments. In the industrial market, it has usually come to mean the sharing of manufacturing or production data between a variety of applications ranging from human machine interface software and data historians, to large MES and ERP applications.

Regardless of the business segment served, client/server applications have one thing in common: a standardized method of sharing data. In the industrial segment, many client/server technologies have been developed over the last ten years. Initially, some of these technologies were proprietary. In many cases these proprietary client/server architectures were in wide use but remained unavailable to third party applications. Early in the development of windows, Microsoft provided a generic client/server technology called DDE or Dynamic Data Exchange. DDE did provide a basic architecture that would allow many windows applications from a wide range of vendors to share data, but there was one problem. DDE was not designed for the industrial market. It lacked much of the speed and robustness desired in an industrial setting. However, this did not stop DDE from becoming a dominant client/server architecture, largely due to its availability in most windows applications. In time, variations on Microsoft's DDE were developed by some of the leading vendors in the market. These variations addressed some of the speed and reliability issues of DDE but many people in the industrial segment agreed that a better system needed to be developed.

With the advent of 32 bit Operating Systems, and the use of Ethernet to provide communications between devices, there was a need for quicker and cleaner data transfer between software applications. This is where OPC saw its birth into the industry.

OPC (OLE for Process and Control) servers provide a standardized method of allowing multiple industrial applications to share data in a quick and robust manner. The OPC server provided in this package has been designed to meet the demanding requirements found in the industrial environment.

This OPC server has been designed as a two-part program. The primary component provides all of the OPC and DDE connectivity as well as the user interface functions. The second part is comprised of plug-in communications drivers. This two-part design allows you to add multiple communications options to your SCADA application while utilizing a single OPC server product thus reducing your learning curve as your project grows.

OPC technology reflects the move from closed proprietary solutions to open architectures that provide more cost-effective solutions based on established standards.

Accessing KEPServerEX

A Windows based client application must be used to view data from the KEPServerEX application. In this section we will cover the basics of connecting a number of common OPC clients to KEPServerEX. While we cannot possibly cover every client application that exists, we believe that after reviewing this document you should be able to deal with most client applications.

The intention of this section is to show connectivity to KEPServerEX. It is assumed that you have already either configured your KEPServerEX application by selecting the appropriate driver and settings or you have run the Simulator demo (Simdemo.opf) which is included with KEPServerEX. For simplicity, the Simdemo project will be used for all examples contained in this section.

Before beginning any of the examples, start the KEPServerEX application by selecting it from your Start Menu or from its desktop icon. Once the server is loaded, use the File|Open command to load the “Simdemo” project. The KEPServerEX application is always active once you have opened an existing project or configured at least one channel and device in a new project. After you have selected a project, in this case the Simdemo project, KEPServerEX will automatically load this project when an OPC client application invokes KEPServerEX’s OPC server component.

Users have always had the ability to create what we refer to as “user defined tags” in their KEPServerEX application. Prior to OPC, defined tags gave a DDE application designer the ability to create a label for device data. Assume register 1000 contained the value of parts made, without defined tags a DDE application would have directly accessed register 1000. Using defined tags a label can be created like “PartsMade”. Now the DDE application could access the data via this new label, removing the machine level knowledge from the client application and keeping it at the server level where it belongs. This label, while useful for DDE is a necessity for OPC clients. For OPC clients, defined tags take on a greater role. Like the DDE example, defined tags allow you to create labels for your device data and keep the configuration of those tags in the server. OPC clients have a major advantage over DDE clients. OPC clients can browse the defined tags you create in your KEPServerEX application, which allows you to simply point and click on a tag to add it to your OPC client project.

OPC Tag Browsing allows you to see a list of the defined tags you have created in your KEPServerEX application, directly within your OPC client application.

For more information on defined tags see the “Designing a Project” section of the KEPServerEX help file, which can be accessed from the Help/Contents menu selection of the KEPServerEX application.

Using KEPServerEX Drivers

Part of the innovative design of Kepware’s OPC/DDE Server Technology is the separation of the Hardware Protocol Driver from the Server Technology. This separation allows the user to use one or more drivers in the server at the same time. Each driver has its own help file which provides information on devices supported, communications parameters, cabling, addressing, and error messages.

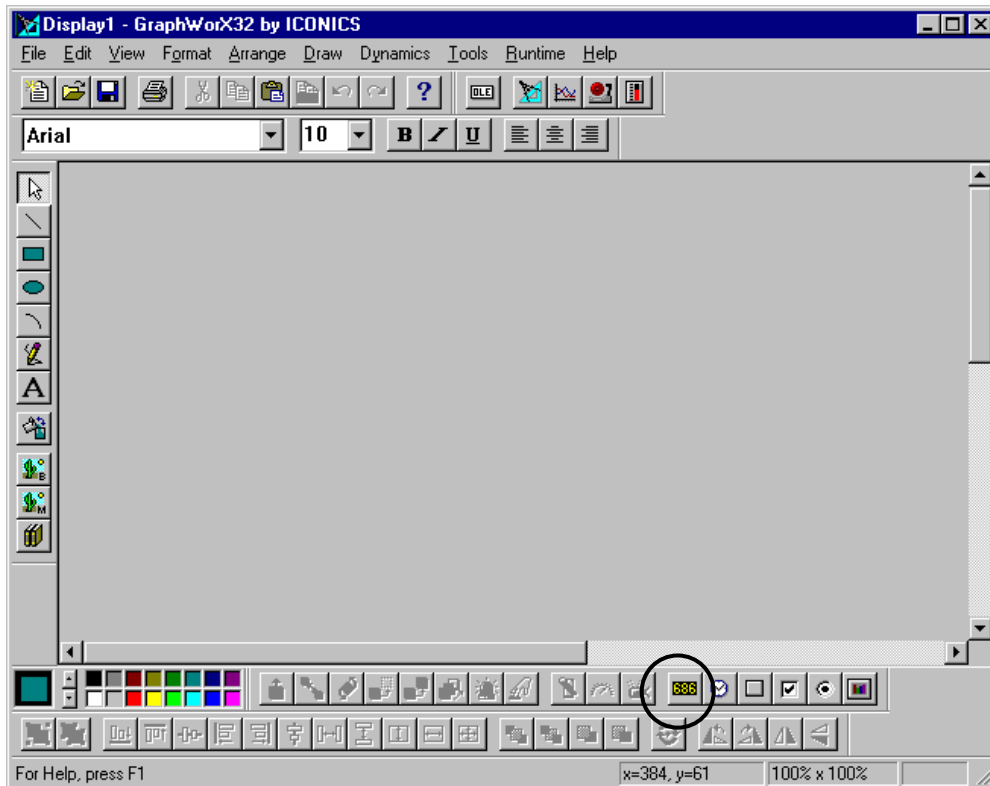
The driver help file should contain all of the information you will need to connect your device to the PC so that we can talk to it. If you do not connect to the device be sure to check the error messages and look up their meaning in the help file.

Iconics' Genesis32® as an OPC Client


Connect to the Server from Genesis32 Components

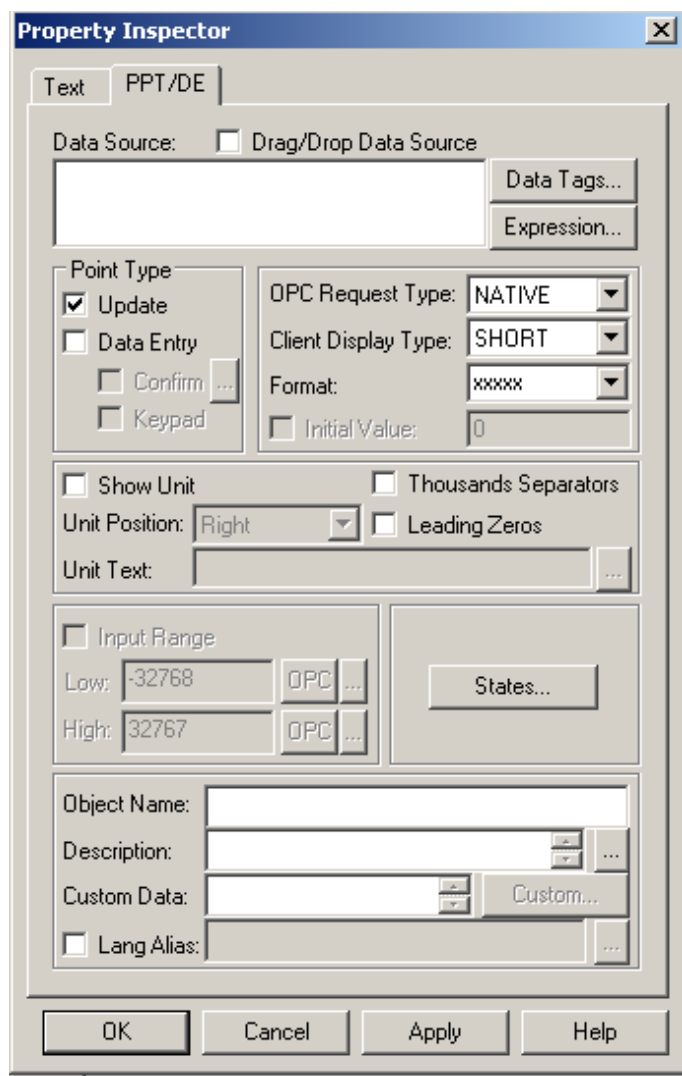
The following steps will show you how to create an OPC connection to KEPServerEX from GraphWorX32. The Genesis Version used in this example is Version 9.

1. Start GraphWorX32 from the start menu.



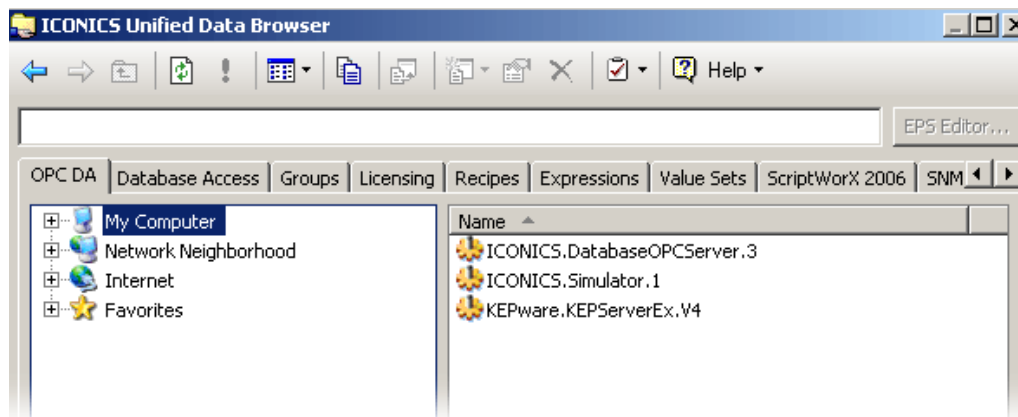
Select a Process Point

2. In the new display window select Process Point  and place it in the window.
3. The Property Inspector for the object will open automatically (shown below).



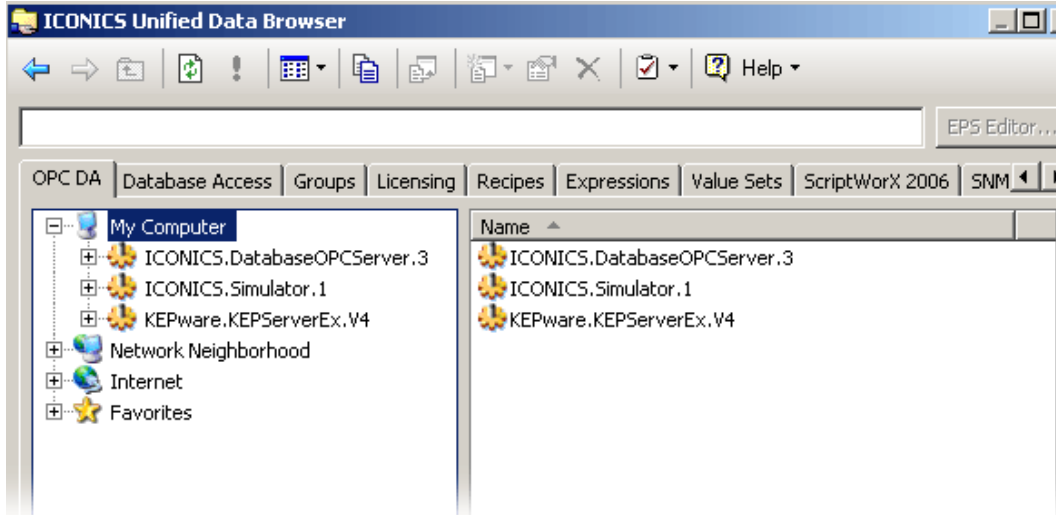
Browse for an Available Server

4. In the Property Inspector click on **Data Tags** to select an OPC tag for the object. The Unified Data Browser will be displayed next.

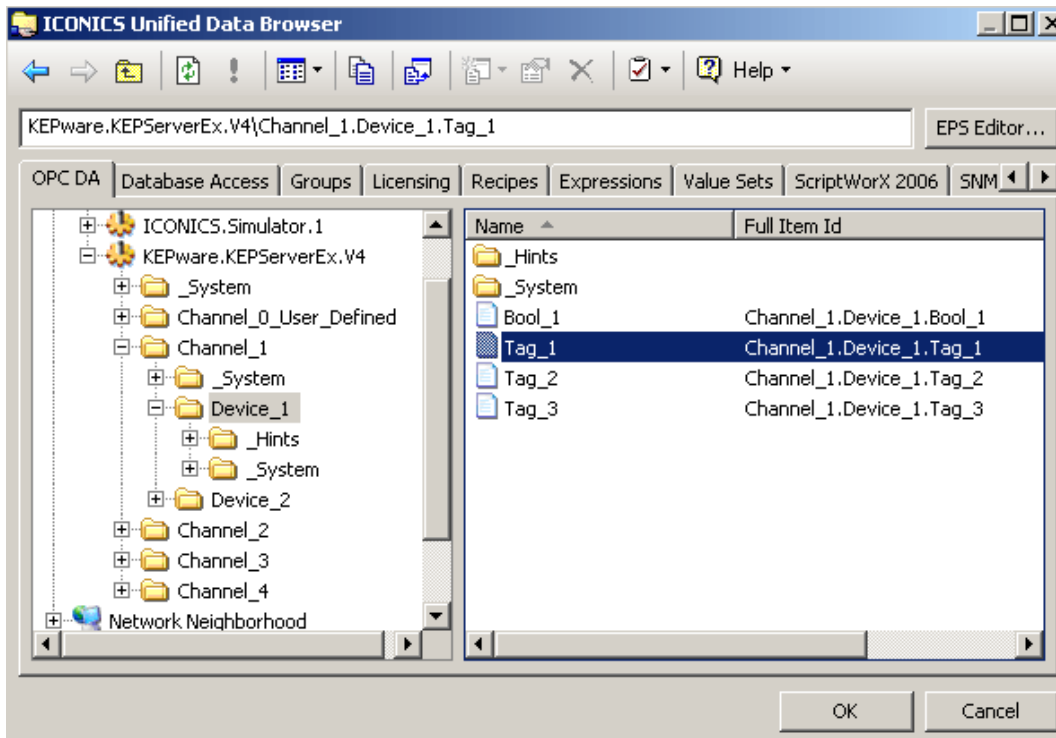


- In the Unified Data Browser window, select and expand the “My Computer“ tree view for a list of the available OPC Servers on your PC.

Note: If you are connecting to a server located on another PC then you would browse through the Network Neighborhood, select the PC running the server and then select the server from the available list. You will need to configure DCOM for the remote connection. See Kepware’s DCOM Configuration Guide (KTSM0010) for details.



- In the OPC Tag Browser tree view expand KEPware.KEPServerEX.V4 and then select Device_1 under Channel_1. A list of the tags available under Device_1 will appear in the right-hand pane of the browser, as shown below.

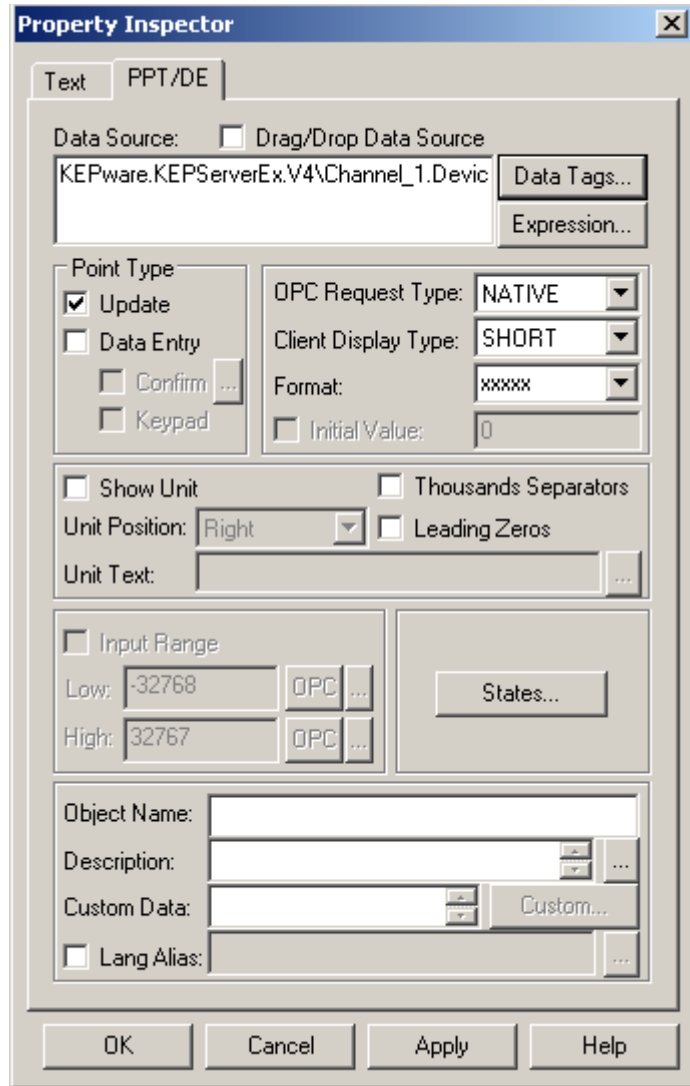


Select Tag from Browser

- Select Tag_1 and click OK to close the browser.

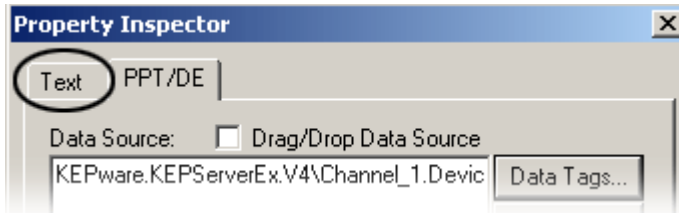
The Item ID for the Tag is KEPware.KEPServerEX.V4\Channel_1.Device_1.Tag_1. If you had browsed to another PC in the network to select the tag the PC name would be included in the Item ID as follows \\Remote_Station\KEPware.KEPServerEX.V4\Channel_1.Device_1.Tag_1.

- In the previous step, you selected Tag_1. The Property Inspector for that tag is displayed. As shown below, the Point Type can be set in this dialog. In this example, we have left the default of Update.

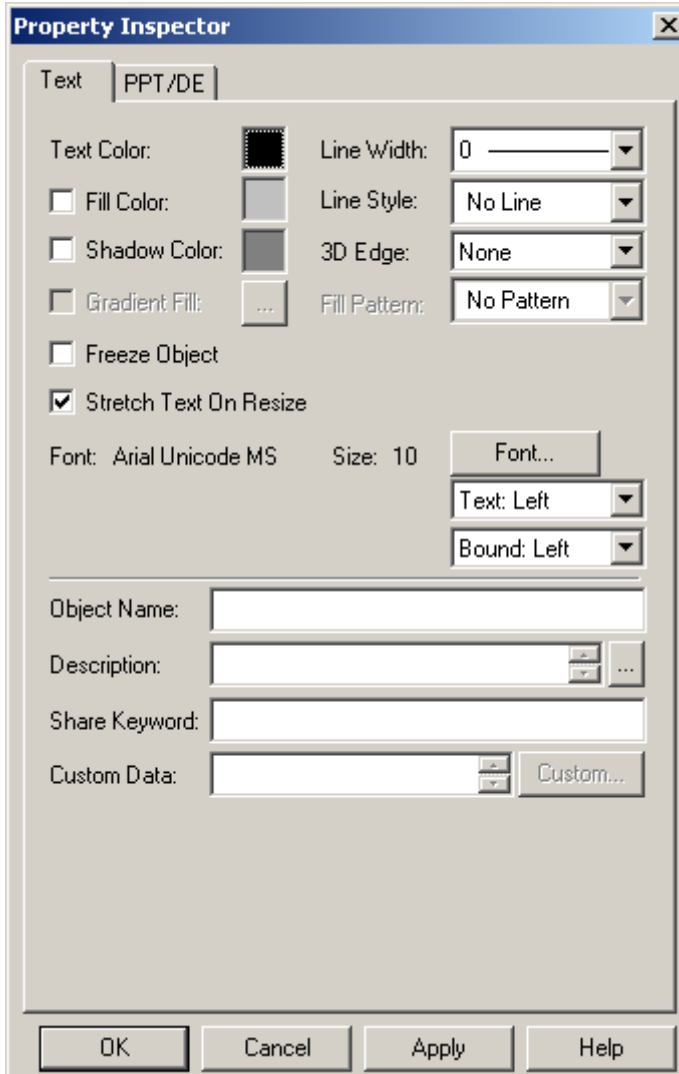


- Review the other fields in this dialog and make any necessary changes.

10. Now click the Text tab to define how you want the point to display.

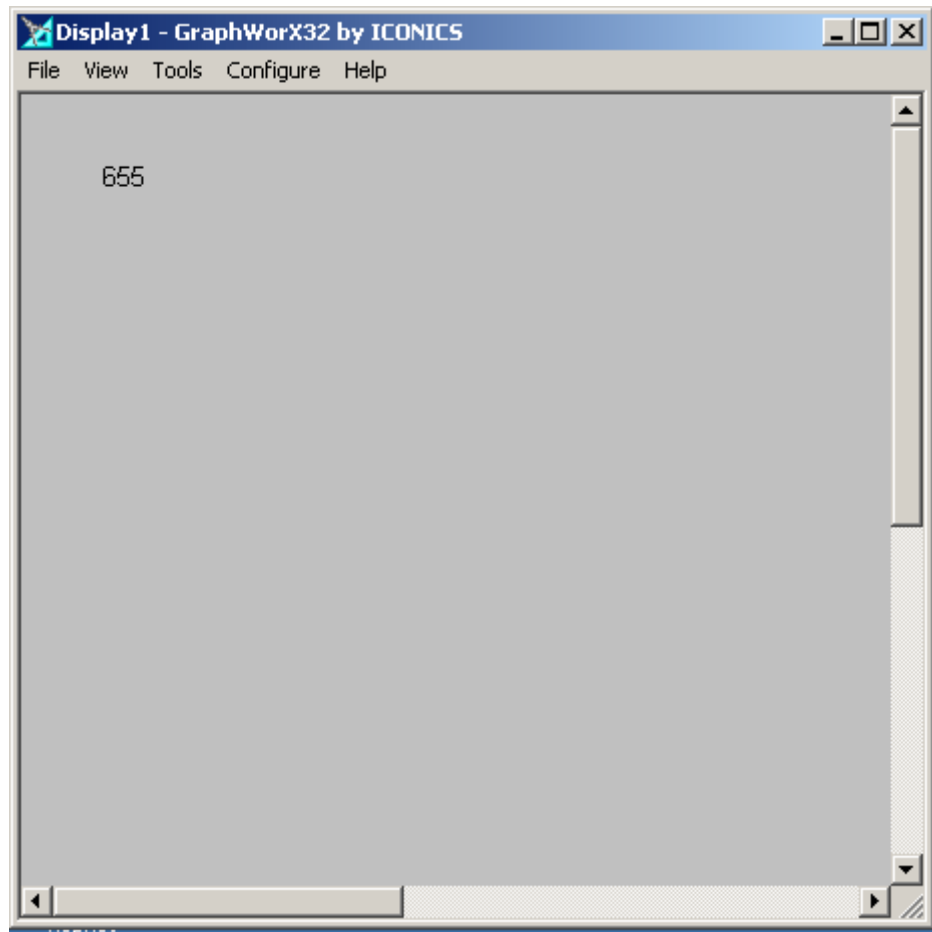


11. On the Text tab, select the properties you want for your object, then click **OK**.



Check the OPC Connection and View Server Data

1. In the GraphWorX32 window you will see the new object on the window. Click Runtime to run the window and connect to the server.
2. At this time you should see a changing number in the display window.



Using Kepware's OPC Quick Client

[Kepware](#) provides an OPC client application for testing purposes with each installation of KEPServerEX. For more information on Kepware's **OPC Quick Client**, please see the OPC Quick Client help file.