

# KEPServerEX Client Connectivity Guide

For Lookout



KTSM-00015  
v. 1.02

Copyright © 2001, Kepware Technologies

## **KEPWARE END USER LICENSE AGREEMENT AND LIMITED WARRANTY**

The software accompanying this license agreement (the Software) is the property of Kepware Inc, and is protected by United States and International Copyright laws and International treaty provisions. No ownership rights are granted by this Agreement or possession of the Software. Therefore, you must treat the Licensed Software like any other copyrighted material (e.g., a book or musical recording), except that you may make a single copy for backup or archival purposes. Your rights and obligations in its use are described as follows:

1. You may use and display this software on a single computer.
2. You may make one copy of the software for archival purposes or you may copy the software onto your hard disk and hold the original for archival purposes.
3. You may not modify or attempt to reverse engineer the software, or make any attempt to change or even examine the source code of the software.
4. You may transfer the software to another computer using the utilities provided. However, the software must be used on only a single computer at one time.
5. You may not give or distribute copies of the software or written materials associated with the software to others.
6. You may not sub-license, sell, or lease the software to any person or business.

### **Return Policy**

The original licensee of the software can return it within sixty (60) days of purchase. Please call us for a Return Material Authorization Number.

### **Limited Warranty**

Kepware does not warrant that the Software will be error free, that it will satisfy your planned applications or that all defects in the Software can be corrected. If Kepware provides information or assistance regarding the use of the Software or otherwise, Kepware is not assuming the role of engineering consultant. Kepware disclaims responsibility for any errors or omissions arising in connection with engineering in which its Software or such information or assistance is used.

The foregoing is the sole and exclusive warranty offered by Kepware.

Kepware disclaims all other warranties, express or implied, including but not limited to the implied warranties of merchantability and fitness for a particular purpose, with regard to the licensed software and all accompanying materials.

In no event shall Kepware be liable for incidental or consequential damages, including lost profit, lost savings, lost opportunities, or other incidental or consequential damages arising out of the use or inability to use the licensed software, even if Kepware has been advised of the possibility of such damages.

Kepware's entire liability shall be, at Kepware's option, either (a) return of the price paid for the Software (or component), or (b) repair or replacement of the Software (or component) that does not meet Kepware's Limited Warranty and which is returned to Kepware within the warranty period. This shall be the sole and exclusive obligation of Kepware and your sole and exclusive remedy with respect to any such failure. The Limited Warranty is void if failure of the Software (or component) has resulted from accident, abuse or misapplication.

### **Support**

Kepware provides *unlimited e-mail* support for all Software whether a demo or registered license. Kepware will provide a total of *two hours* free phone support for all registered Software after paying the applicable license fees. Kepware will provide *unlimited phone* support so long as you have paid Kepware any applicable maintenance or support fees and subject to the terms of those agreements. All corrections and maintenance releases will be made available through Kepware's Internet site. All major product releases of the Software are subject to upgrade fees. At no time will on-site support be provided without advance payment to Kepware for a minimum of two days on-site engineering support services, plus all expenses.

### **Trademarks**

Microsoft® and Microsoft Excel® are registered trademarks, Windows™ is a trademark of Microsoft Corporation.

32 Bit KEPServerEX Connectivity Guide

#### **Kepware Technologies**

P.O. Box 579

Portland, Maine 04112

**Sales:** (207) 775-1660 x208

**Technical Support:** (207) 775-1660 x211

**Fax:** (207) 775-1799

**E-mail:** sales@kepware.com or  
technical.support@kepware.com

**www.Kepware.com**

# Table of Contents

<b>INTRODUCTION TO KEPSERVEREX.....</b>	<b>1</b>
<b>ACCESSING KEPSERVEREX.....</b>	<b>1</b>
USING KEPSERVEREX DRIVERS.....	2
<b>NATIONAL INSTRUMENTS LOOKOUT™ AS AN OPC CLIENT.....</b>	<b>3</b>
CONNECT TO THE SERVER FROM LOOKOUT™.....	3
CREATE A NEW PROCESS .....	3
CREATE AN OPCCLIENT OBJECT .....	5
ADD A DISPLAY OBJECT TO THE PANEL .....	8
VIEW LIVE DATA .....	11
<b>KEPWARE'S OPC QUICKCLIENT AS AN OPC CLIENT .....</b>	<b>13</b>
CONNECT TO KEPSERVEREX FROM KEPWARE'S OPC QUICK CLIENT .....	13
<i>Auto Launch and Generate a Quick Client Project.....</i>	<i>13</i>
<i>Manually Create a Quick Client Project .....</i>	<i>14</i>
Browse for KEPServerEX .....	14
Add a Tag/Item Group.....	15
Set Group Properties.....	15
Add Tags/Items.....	15
<i>Check OPC Connection.....</i>	<i>16</i>



# Introduction to KEPServerEX

KEPServerEX is a 32 bit windows application that provides a means of bringing data and information from a wide range of industrial devices and systems into client applications on your windows PC. KEPServerEX falls under the category of a "Server" application. It is very common to hear the term "client/server application" in use across many software disciplines and business segments. In the industrial market, it has usually come to mean the sharing of manufacturing or production data between a variety of applications ranging from human machine interface software and data historians, to large MES and ERP applications.

Regardless of the business segment served, client/server applications have one thing in common: a standardized method of sharing data. In the industrial segment, many client/server technologies have been developed over the last ten years. Initially, some of these technologies were proprietary. In many cases these proprietary client/server architectures were in wide use but remained unavailable to third party applications. Early in the development of windows, Microsoft provided a generic client/server technology called DDE or Dynamic Data Exchange. DDE did provide a basic architecture that would allow many windows applications from a wide range of vendors to share data, but there was one problem. DDE was not designed for the industrial market. It lacked much of the speed and robustness desired in an industrial setting. However, this did not stop DDE from becoming a dominant client/server architecture, largely due to its availability in most windows applications. In time, variations on Microsoft's DDE were developed by some of the leading vendors in the market. These variations addressed some of the speed and reliability issues of DDE but many people in the industrial segment agreed that a better system needed to be developed.

With the advent of 32 bit Operating Systems, and the use of Ethernet to provide communications between devices, there was a need for quicker and cleaner data transfer between software applications. This is where OPC saw its birth into the industry.

OPC (OLE for Process and Control) servers provide a standardized method of allowing multiple industrial applications to share data in a quick and robust manner. The OPC server provided in this package has been designed to meet the demanding requirements found in the industrial environment.

This OPC server has been designed as a two-part program. The primary component provides all of the OPC and DDE connectivity as well as the user interface functions. The second part is comprised of plug-in communications drivers. This two-part design allows you to add multiple communications options to your SCADA application while utilizing a single OPC server product thus reducing your learning curve as your project grows.

OPC technology reflects the move from closed proprietary solutions to open architectures that provide more cost-effective solutions based on established standards.

## Accessing KEPServerEX

A Windows based client application must be used to view data from the KEPServerEX application. In this section we will cover the basics of connecting a number of common OPC clients to KEPServerEX. While we cannot possibly cover every client application that exists, we believe that after reviewing this document you should be able to deal with most client applications.

The intention of this section is to show connectivity to KEPServerEX. It is assumed that you have already either configured your KEPServerEX application by selecting the appropriate driver and settings or you have run the Simulator demo (Simdemo.opf) which is included with KEPServerEX. For simplicity, the Simdemo project will be used for all examples contained in this section.

Before beginning any of the examples, start the KEPServerEX application by selecting it from your Start Menu or from its desktop icon. Once the server is loaded, use the File|Open command to load the “Simdemo” project. The KEPServerEX application is always active once you have opened an existing project or configured at least one channel and device in a new project. After you have selected a project, in this case the Simdemo project, KEPServerEX will automatically load this project when an OPC client application invokes KEPServerEX’s OPC server component.

Users have always had the ability to create what we refer to as “user defined tags” in their KEPServerEX application. Prior to OPC, defined tags gave a DDE application designer the ability to create a label for device data. Assume register 1000 contained the value of parts made, without defined tags a DDE application would have directly accessed register 1000. Using defined tags a label can be created like “PartsMade”. Now the DDE application could access the data via this new label, removing the machine level knowledge from the client application and keeping it at the server level where it belongs. This label, while useful for DDE is a necessity for OPC clients. For OPC clients, defined tags take on a greater role. Like the DDE example, defined tags allow you to create labels for your device data and keep the configuration of those tags in the server. OPC clients have a major advantage over DDE clients. OPC clients can browse the defined tags you create in your KEPServerEX application, which allows you to simply point and click on a tag to add it to your OPC client project.

*OPC Tag Browsing allows you to see a list of the defined tags you have created in your KEPServerEX application, directly within your OPC client application.*

For more information on defined tags see the “Designing a Project” section of the KEPServerEX help file, which can be accessed from the Help/Contents menu selection of the KEPServerEX application.

## Using KEPServerEX Drivers

Part of the innovative design of Kepware’s OPC/DDE Server Technology is the separation of the Hardware Protocol Driver from the Server Technology. This separation allows the user to use one or more drivers in the server at the same time. Each driver has its own help file which provides information on devices supported, communications parameters, cabling, addressing, and error messages.

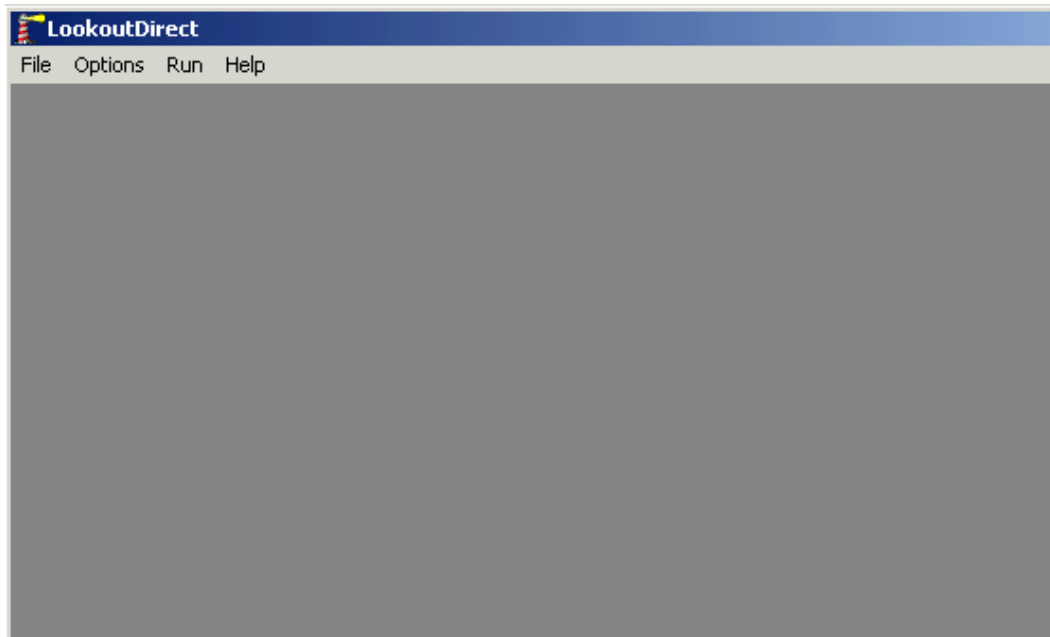
The driver help file should contain all of the information you will need to connect your device to the PC so that you can talk to it via the KEPServerEX. If you do not connect to the device be sure to check the error messages and look up their meaning in the help file.

# National Instruments Lookout™ as an OPC Client

## Connect to the Server from Lookout™

National Instruments Lookout as an OPC client is one of many HMI's that can be used to connect to KEPServerEX. The Lookout version used for this example was version 4.5.1 Build 18. The following steps will show you how to create an OPC connection to the Server from Lookout.

First you will need to open your copy of Lookout and click on File|New to start a new process in Lookout.

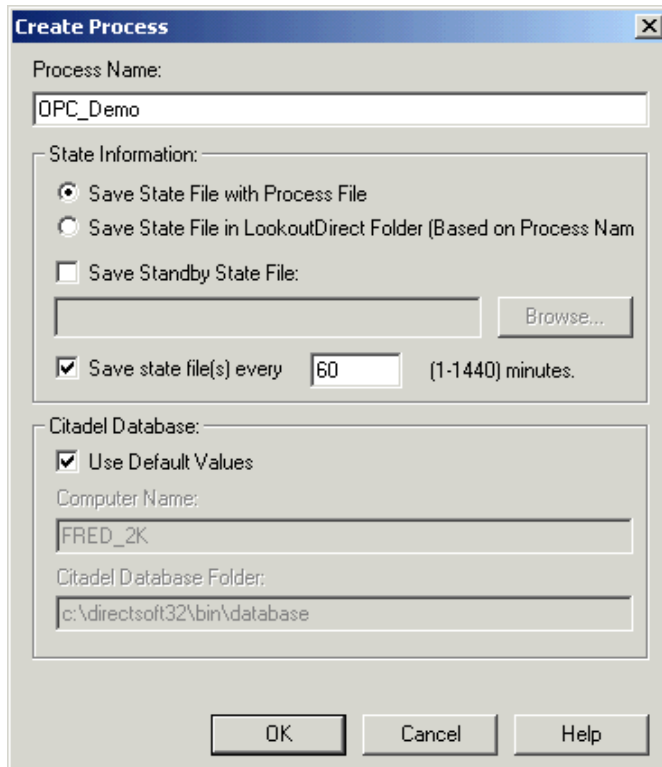


*KEPServerEX is capable of being an OPC or DDE server to Lookout. If you define an OPCClient object in Lookout, then KEPServerEX will be an OPC server to it. Likewise, if you define a DDE object in Lookout, KEPServerEX will be a DDE server*

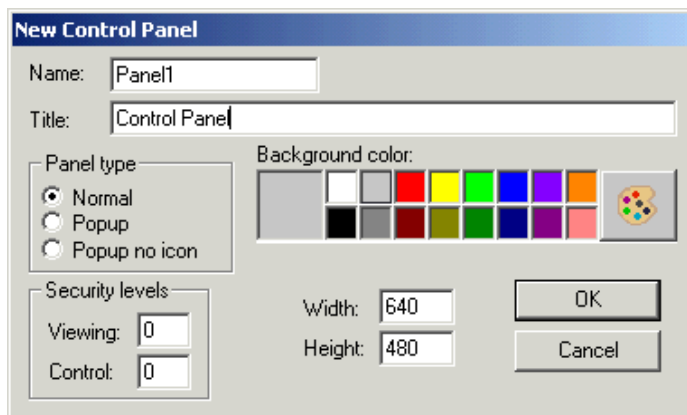
## Create a New Process

You will now see a Create Process dialog box. Enter a name for your process in the Process Name field. We named ours "OPC\_Demo" and accepted the defaults for the rest of the parameters. For more information on the other parameters in the Create Process dialog box see the Lookout Users manual.

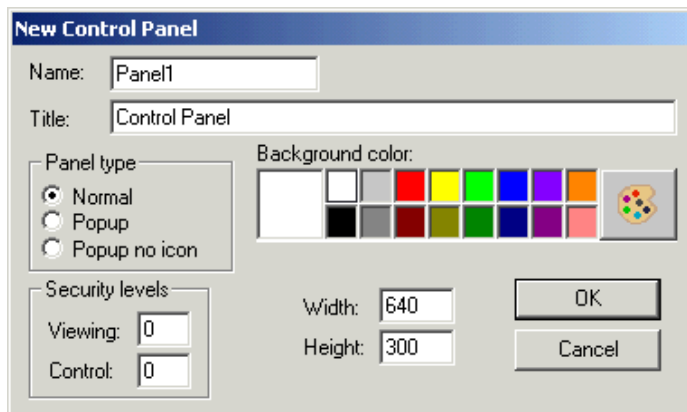
Lastly, click OK to finish.



Next, Lookout will prompt you to create a new control Panel.

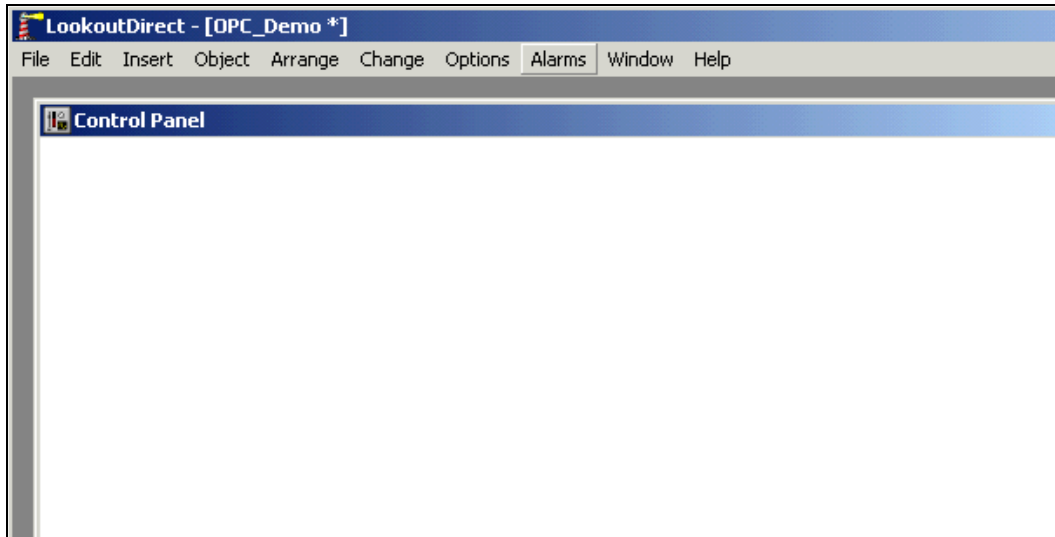


For instruction purposes you can accept the defaults. If you are not creating a full screen project you may wish to change the panel size, we changed ours to 640 by 300.



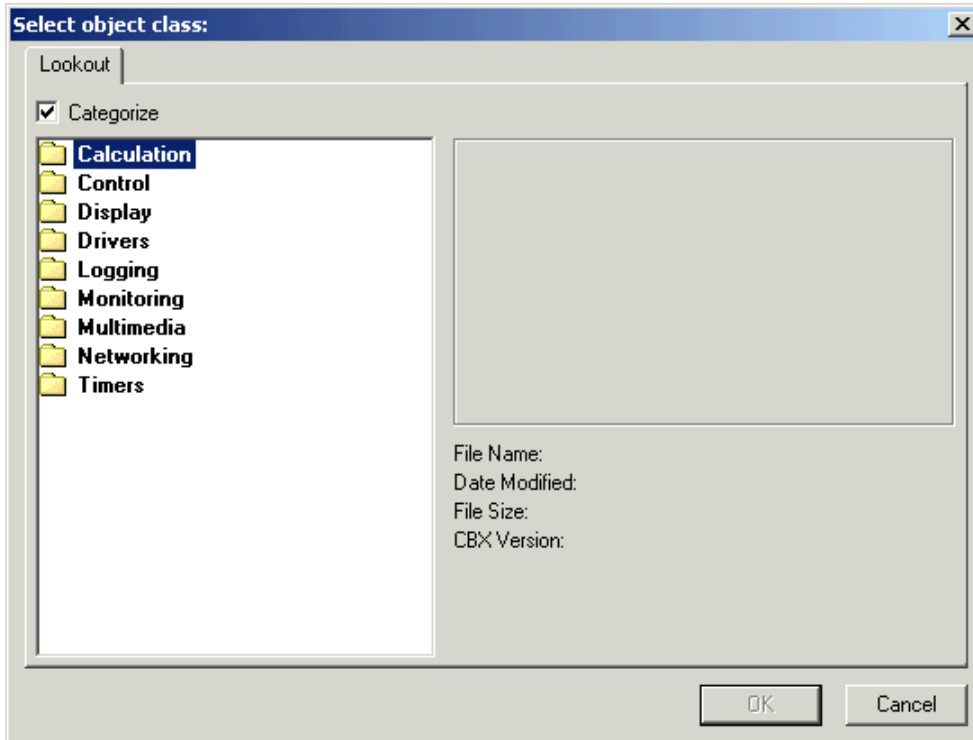


Click OK to accept the changes that were made to the panel and create it as an object in the process.

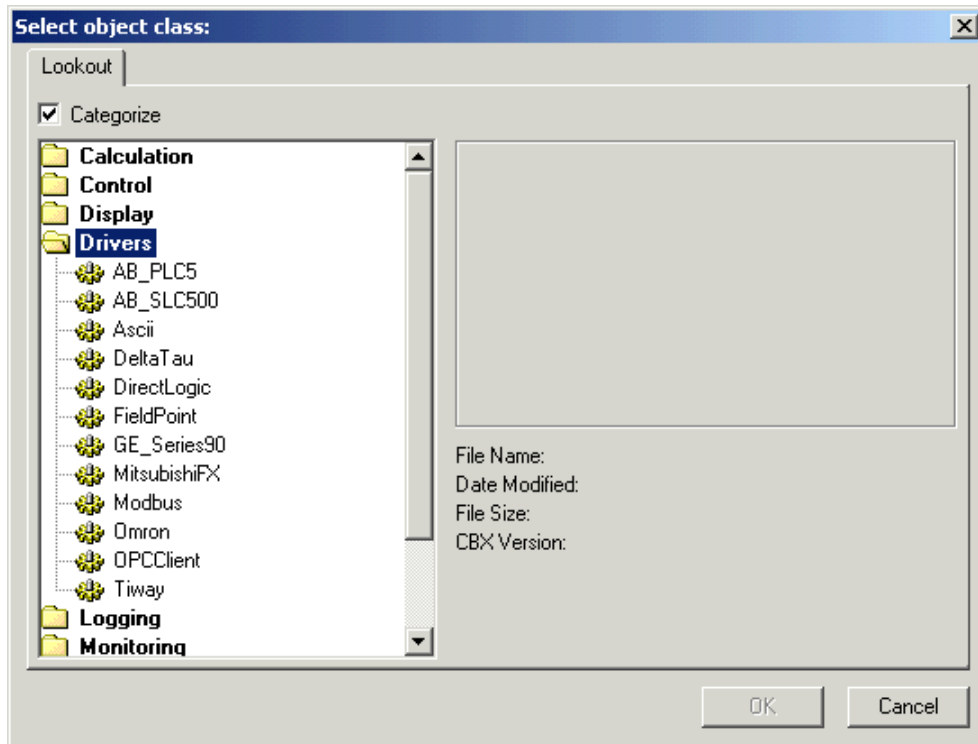


## Create an OPCClient Object

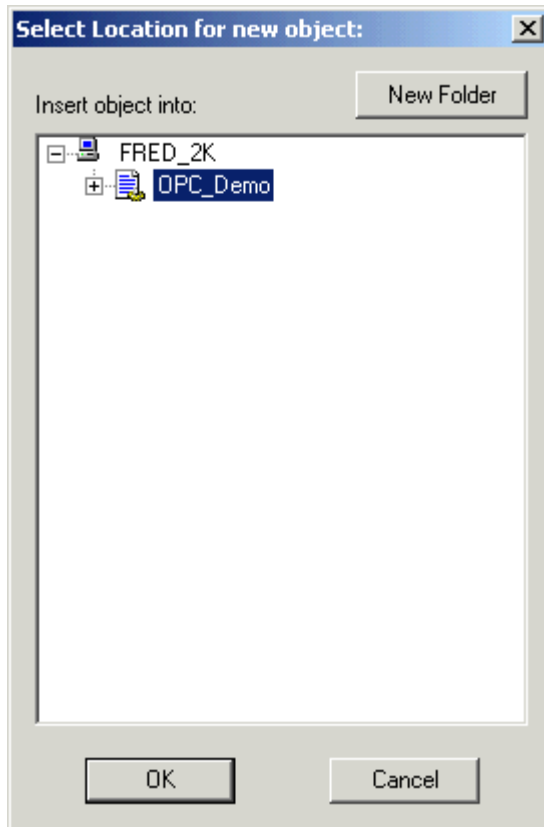
Now that you have a process started you will need to get data into it for display and control. To do this in Lookout you first need to create an object class to handle the communications between KEPServerEX and Lookout. To do this select Object|Create... from the Lookout Main Menu.



In the Select Object Class dialog double click on the Drivers Folder and then select the OPCClient and click OK to accept it.



Next you will get a Select Location for new object dialog box. Select the process that you created earlier and then click OK to finish.



Now you will get a Create OPC Client dialog. You can accept the default Name or you can create your own. In the OPC Server Settings section you are going to use the drop down list to select

KEPServerEX. If you have more than one OPC server installed on your PC the Server Name you will select is "KEPware.KEPServerEX.V4".

**Create OPC Client**

Name:

OPC Server Settings

Server Name:

In-Process Server  
 Local Server  
 Remote Server

Browsing

Disabled  Flat  Hierarchical

Use Asynchronous I/O  
 Force Refresh after Write

OPC Group Settings

Update Rate:  milliseconds  
Deadband:  percent  
Poll Device =  (optional)  
Default Access Path:  (optional)

Communication alarm priority:

*If you are going to connect to KEPServerEX running on another PC then you would select the Remote Server radio button and type the name or IP address of the PC that is running the server. Unlike NetDDE connections you do not use backslashes in the name. You will also need to properly configure DCOM on all PC's involved in the connection. For details on Configuring DCOM for KEPServerEX see the DCOM configuration guide which is on your installation CD or available for download at [www.kepware.com/support](http://www.kepware.com/support).*

For now we will assume that you are connecting to a local server so you should be able to click on OK to accept the client settings. Look in your Lookout Help for an explanation of the other fields in the OPCClient dialog.

**Create OPC Client**

Name:

OPC Server Settings

Server Name:

In-Process Server  
 Local Server  
 Remote Server

Browsing

Disabled  Flat  Hierarchical

Use Asynchronous I/O  
 Force Refresh after Write

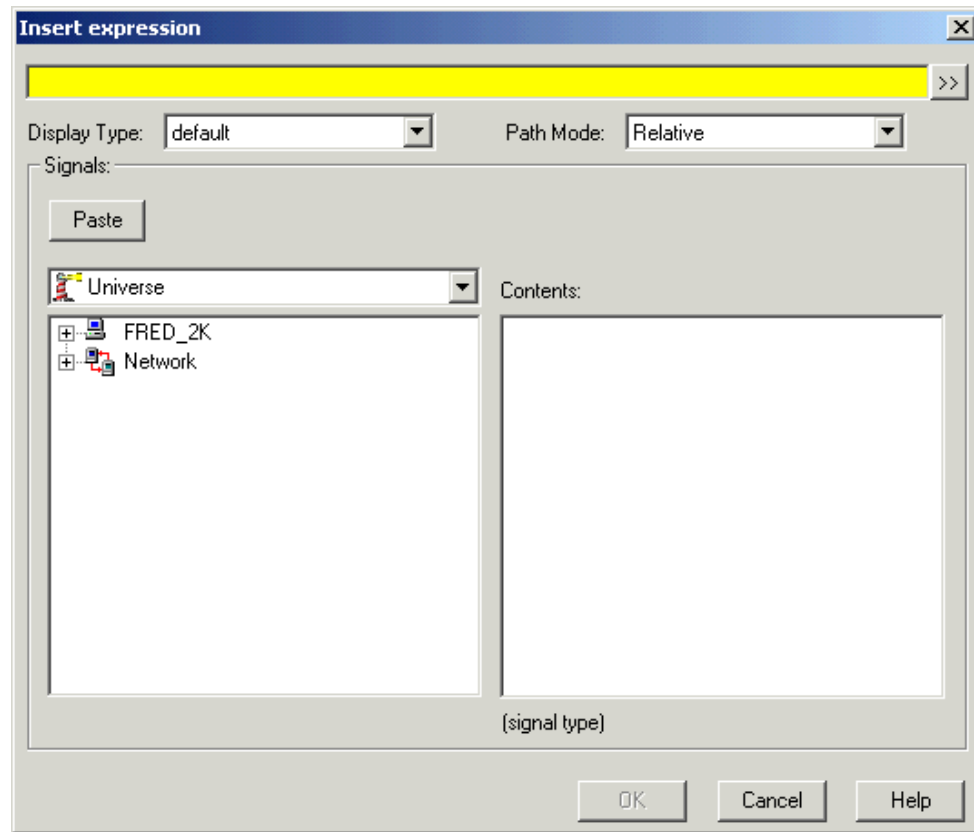
OPC Group Settings

Update Rate:  milliseconds  
Deadband:  percent  
Poll Device =  (optional)  
Default Access Path:  (optional)

Communication alarm priority:

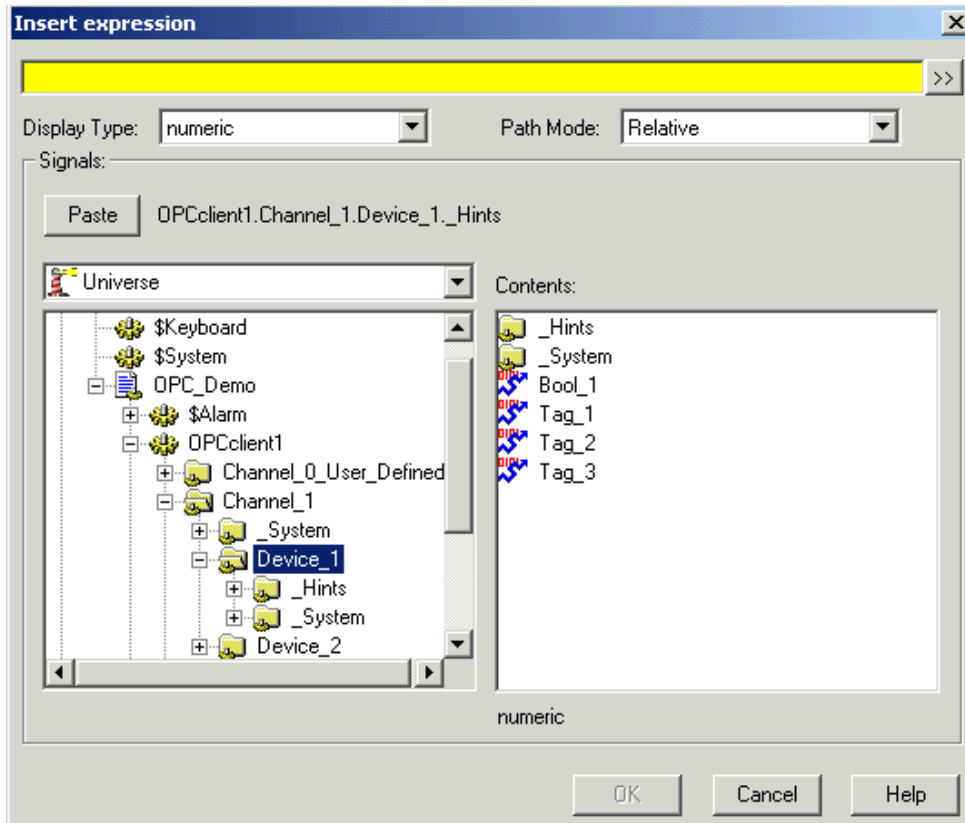
## Add a Display Object to the Panel

Next, you need to display a value from the server in the Control Panel. To do this you will click on Insert|Expression... in the Lookout Main Menu.

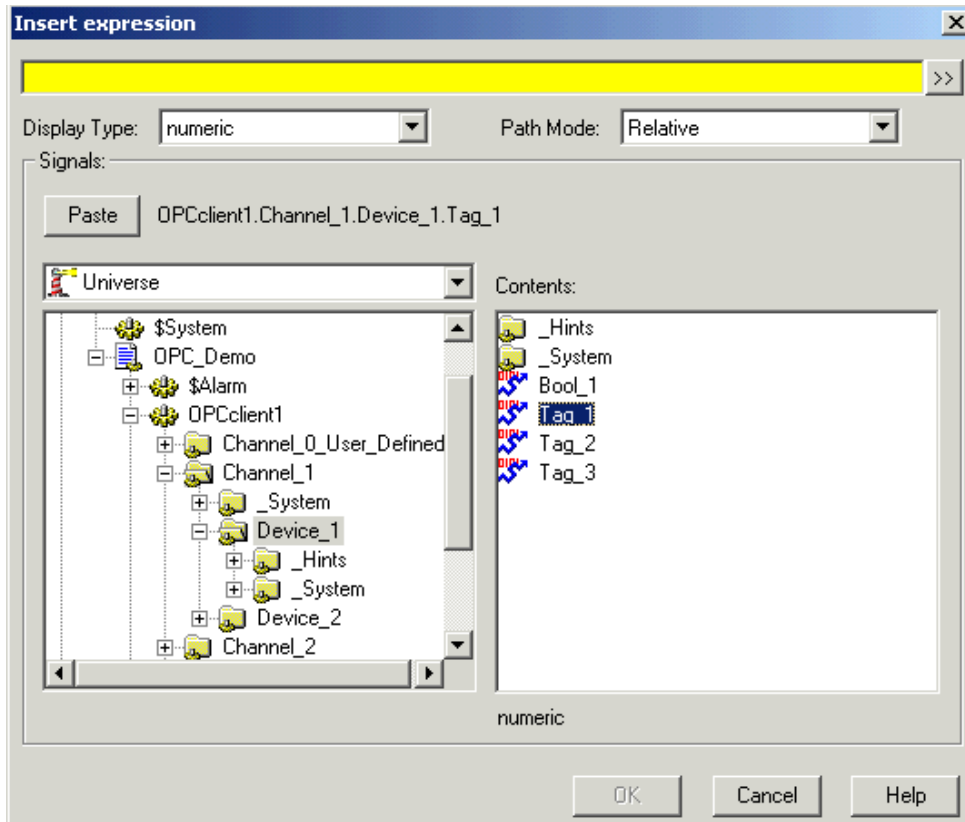


In the Signals section of the Insert Expression dialog you are going to expand the Objects in the left hand pane until you can see the folders under the OPCClient Object that you created. These folders are the Channels and Devices that were created in the KEPServerEX project.

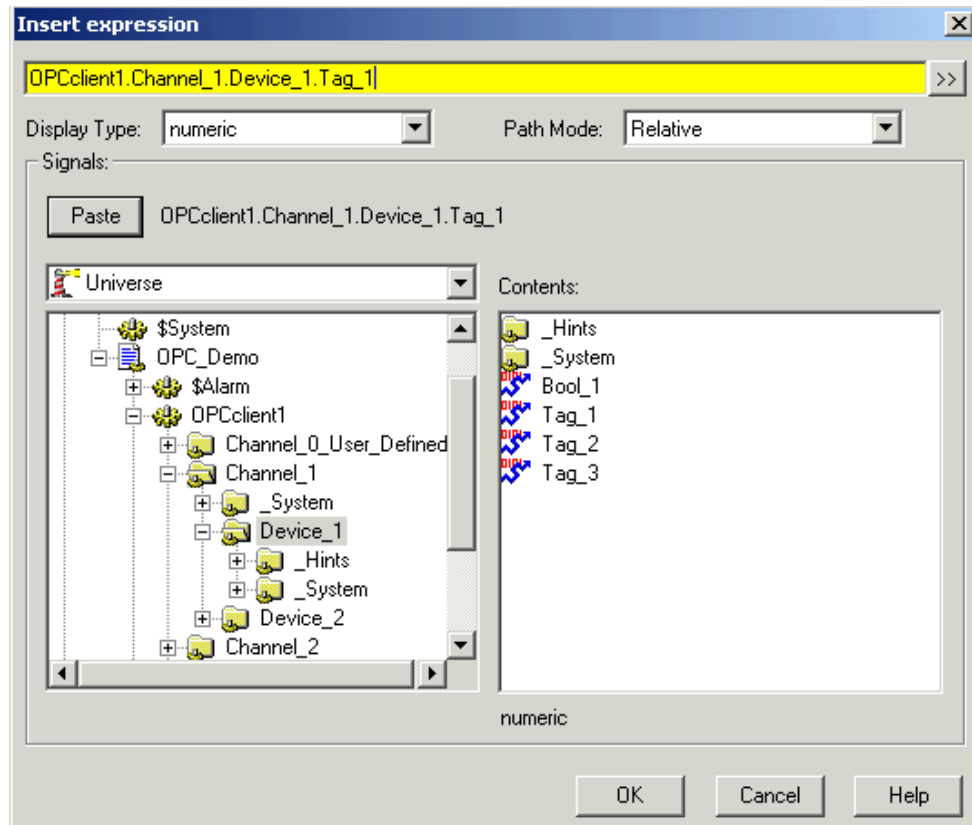
Select the Device Folder that contains the tag you wish to display in the control panel. In the Right Hand pane of the dialog you will see folders for internal tags specific to the device and you will see the tags that were added to the device in the KEPServerEX.



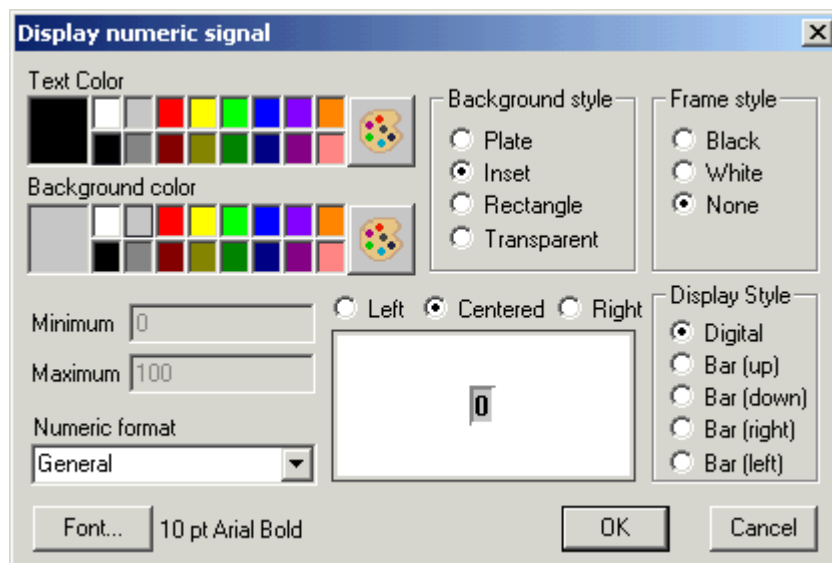
Select the tag you wish to display in the panel and click on the Paste button in the dialog to add the tag to the Expression field at the top of dialog box.



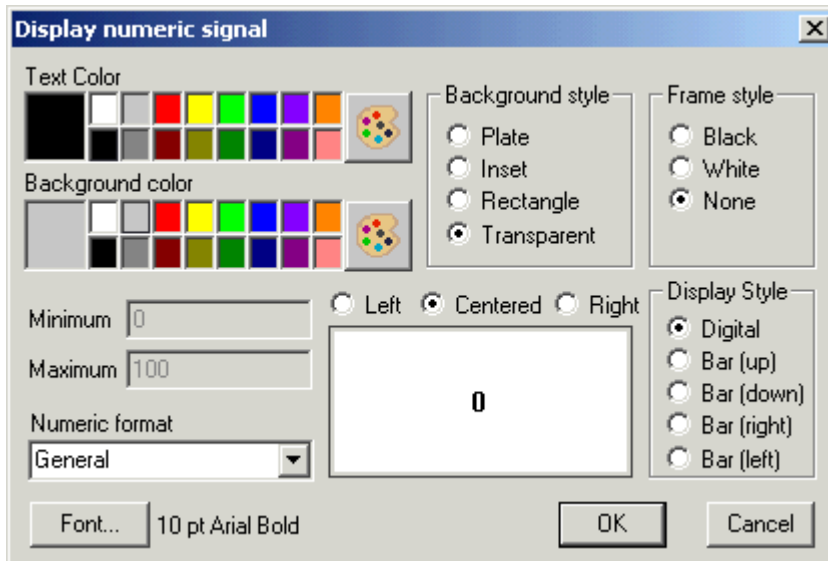
Click OK to accept the expression.



In the Display Numeric Signal dialog you will determine how the tag you selected will be displayed. In our example we select a tag that is a Word so we will accept the defaults except for the Background Style which we will change to Transparent.

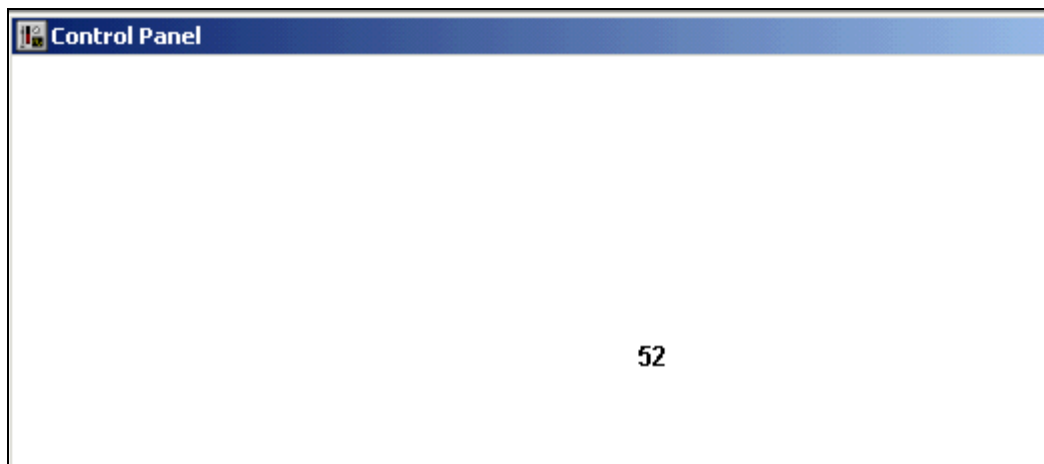


Click OK to accept.



## View Live Data

At this time you should be seeing data displayed in the Control Panel.








# Kepware's OPC QuickClient as an OPC Client

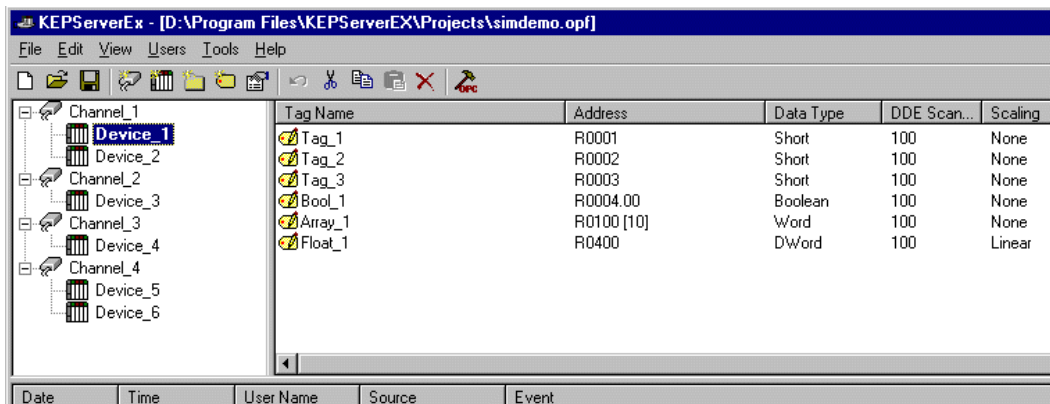
## Connect to KEPServerEX from Kepware's OPC Quick Client

Kepware's OPC Quick Client is an interface that can be used to connect to KEPServerEX. For this example, the OPC Server Version used is V4.41.163 and the OPC client version used is version 4.20.66. The following steps will show you how to create an OPC connection to the KEPServerEX from the Test Client either by using the auto project launch form the server or by manually starting the client and creating a project. Both examples use the "SimDemo.opf" project provided with the server install.

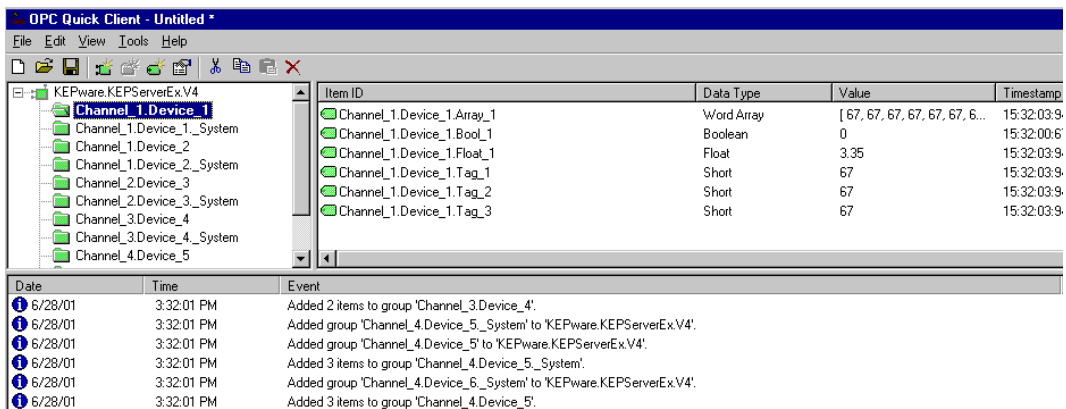
### Auto Launch and Generate a Quick Client Project

In most cases when you are using the Quick Client you are testing to see if you can see all of the tags you have defined in the server. To aid in this process we provide the ability to launch the client from the server and automatically generate the client project.

1. In the Server, once you have added all of the tags you currently want, click on the Launch button  or select "Tools|Launch OPC Quick Client".

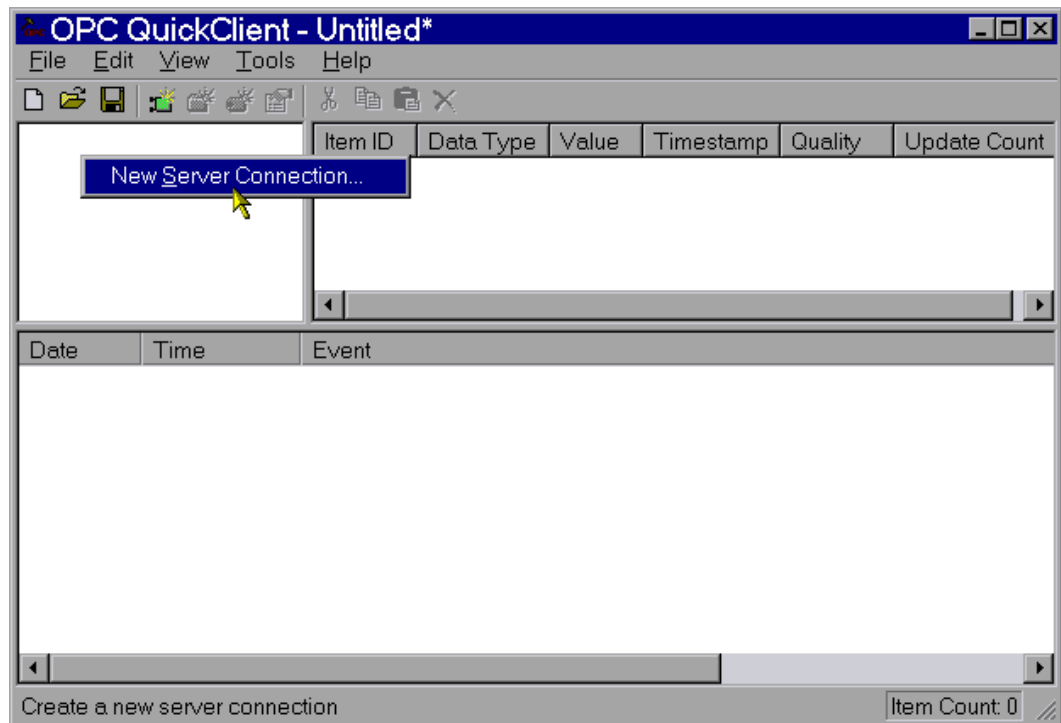


2. You will notice that the client project automatically opens to display the tags in the first Device group.



## Manually Create a Quick Client Project

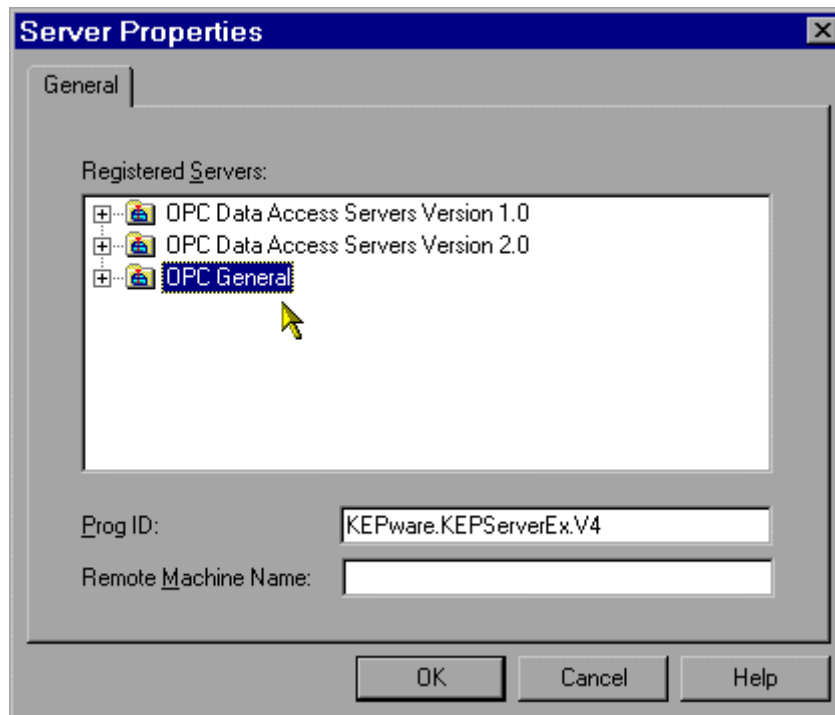
1. To start a new project, select **New Server Connection...** from the **Edit** menu or right click in the upper left display box and select **New Server Connection...**(shown below).



### *Browse for KEPServerEX*

2. In the Server Properties window, click OK because the KEPServerEX is set as the default server. If you were going to connect to the server running on another PC then you would enter the name of that PC in the Remote Machine Name field of the Server Properties window without any back slashes "\\".

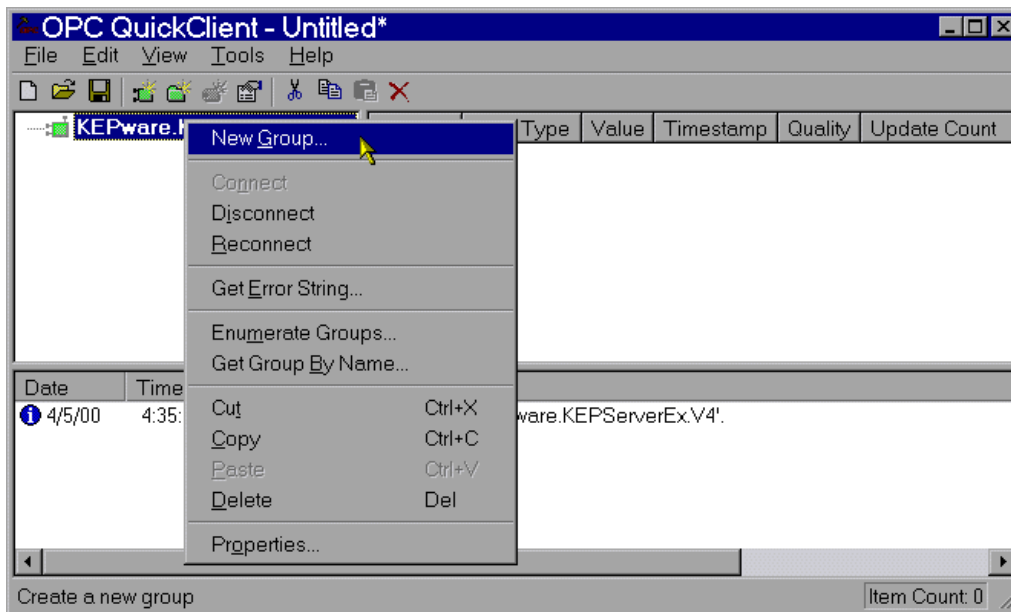
*For remote connections you have to be sure that you have DCOM properly configured. For information on how to configure DCOM see the two guides located either on the installation CD or at the Kepware web site.*



### Add a Tag/Item Group

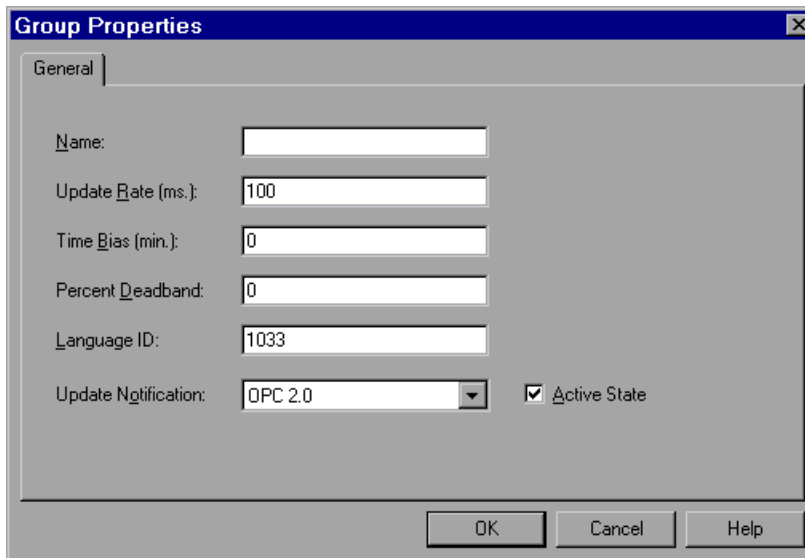
After choosing KEPServerEX, there should be a visual representation of the client connection to the server provided in the upper left-hand display.

3. Right click on this connection and choose New Group or select New Group from the Edit menu.



### Set Group Properties

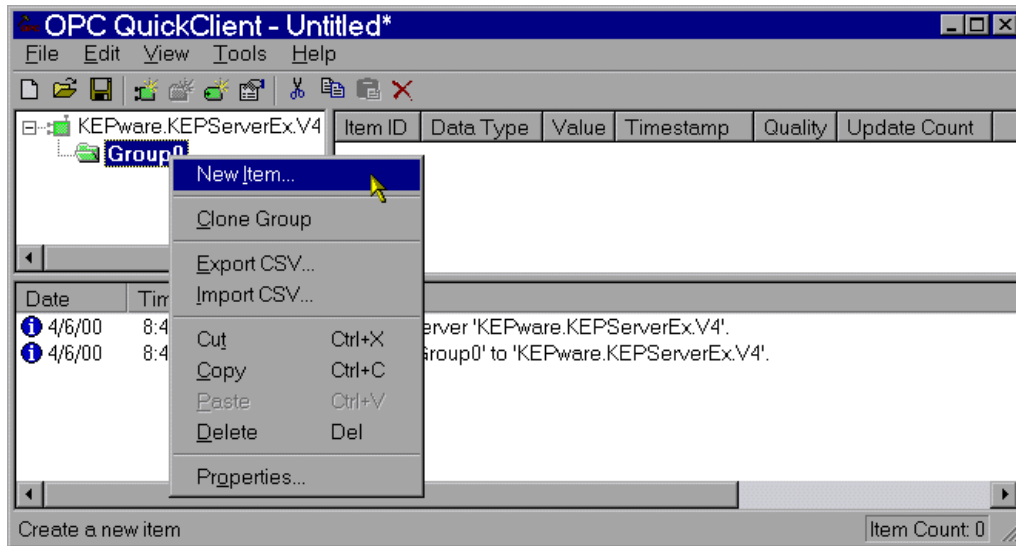
4. In the Group Properties window, enter a Name to identify the group. If no group name is entered, the server will generate a unique name for you. Also, make sure the Active State is enabled so the client will show active items for the group. Finally, click OK.



### Add Tags/Items

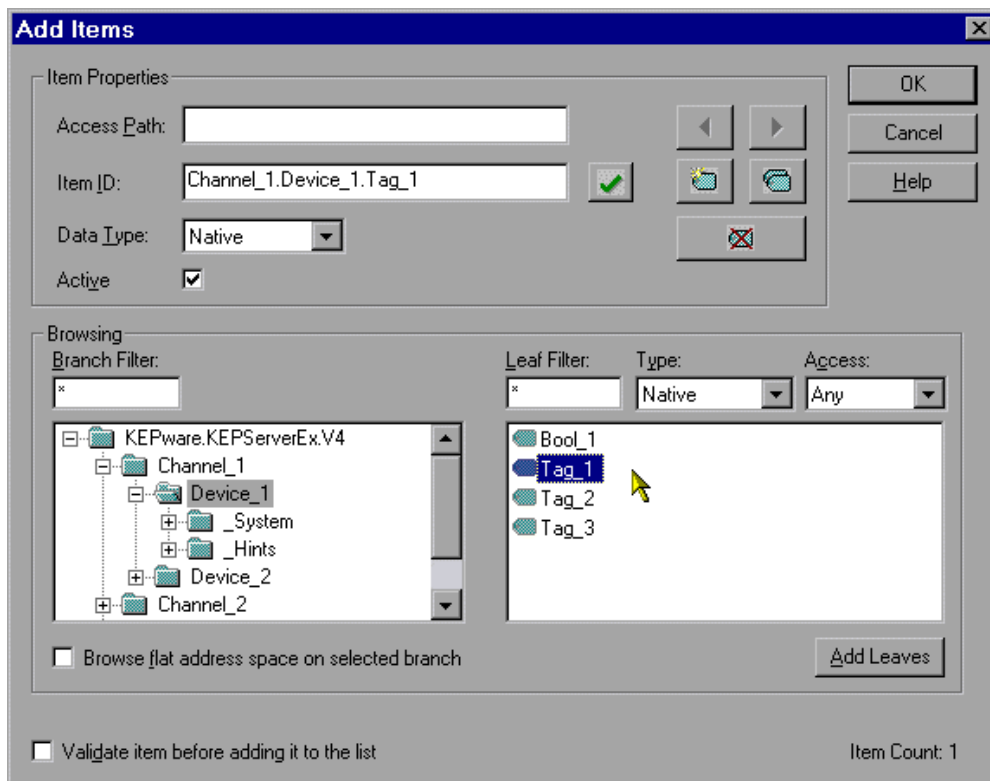
Now that a group has been created it is possible to add items.

5. Right click over the Group Name in the left display or select New Item from the Edit menu to open the Add Items window.



To learn more about using Kepware's OPC QuickClient with KEPServerEX, see the KEPServerEX help file "Designing a Project (Saving and Testing the Project)".

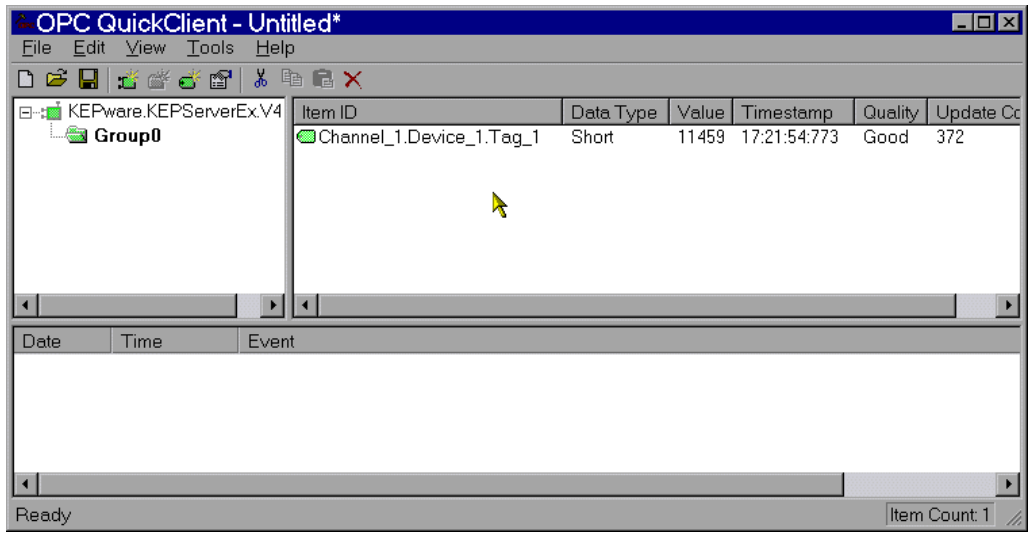
- Using the tree view in the left display of the OPC Address Browser, select the Device or Group from which you wish to select Address items/tags. In the right hand pane, double click to add an item. In this example, Tag\_1 in Device\_1 on Channel\_1 has been selected. Remember that these are items that have already been created in our Server Demo Project (Simdemo.opf). Also, you can view all possible address types and create a dynamic item by choosing "\_Hints" under the device name in the tree menu.



- Once you have selected all of the items to be displayed by the client, click OK

## Check OPC Connection

- Next we are going to verify that we are getting data from KEPServerEX. You should see a Quality of "Good" in the Tag Monitor window for the tag and a Value that is ramping or incrementing very quickly.



9. You now have a good OPC connection to the Server from the OPC Quick Client.