



# Kepware Technologies

Accessing the UI of an Application  
that is running as a System  
Service under a Vista or Higher  
Operating System

# Table of Contents

- 1. Overview ..... 1
  - 1.1 Applies To the Following Kepware Products ..... 1
- 2. How to Access the Session 0 window ..... 1

## 1. Overview

Beginning with Vista, Microsoft introduced Session 0 Isolation as a security measure. This means that when starting up a Vista, Windows7, or Server 2008 machine you no longer login to Session 0 but into Session 1. Unfortunately the interactive Windows services of pre-Vista applications are only available on Session 0. The UIs of legacy apps thus become "in-accessible" when the apps are run as system services.

The following instructions will show you how to access the UI of any system service when it is running on Vista, Win7, or Server 2008. For example, this would bring up the UI for KEPServerEX V4 running as a system service but not for KEPServerEX V5 (in version 5 the Configuration UI and the Runtime service have been separated).

We are going to use the Interactive Services Detection service which comes with Vista, Windows7, and Server 2008. Interactive Services Detection will allow you access to Session 0 so that any interactive services running on that session will become visible.

### 1.1 Applies To the Following Kepware Products

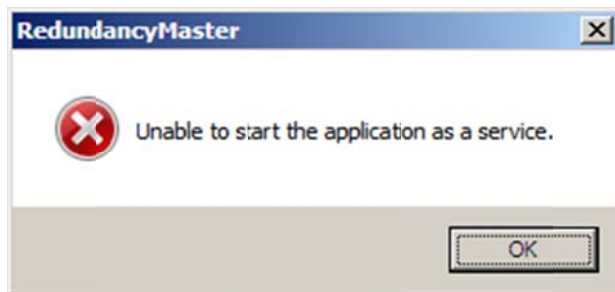
- KEPServerEX V4
- LinkMaster
- RedundancyMaster

## 2. How to Access the Session 0 window

The following instructions deal specifically with an installation of RedundancyMaster on Windows Server 2008 where a user has selected **Tools | Install as NT Service** thus putting the application into System service mode.

To access Redundancy Master's UI follow the instructions below.

1. Login to Windows Server 2008 as an Administrator.
2. Following login, it is necessary that at least one attempt has been made to start Redundancy Master. Make sure that the following error message has been displayed.

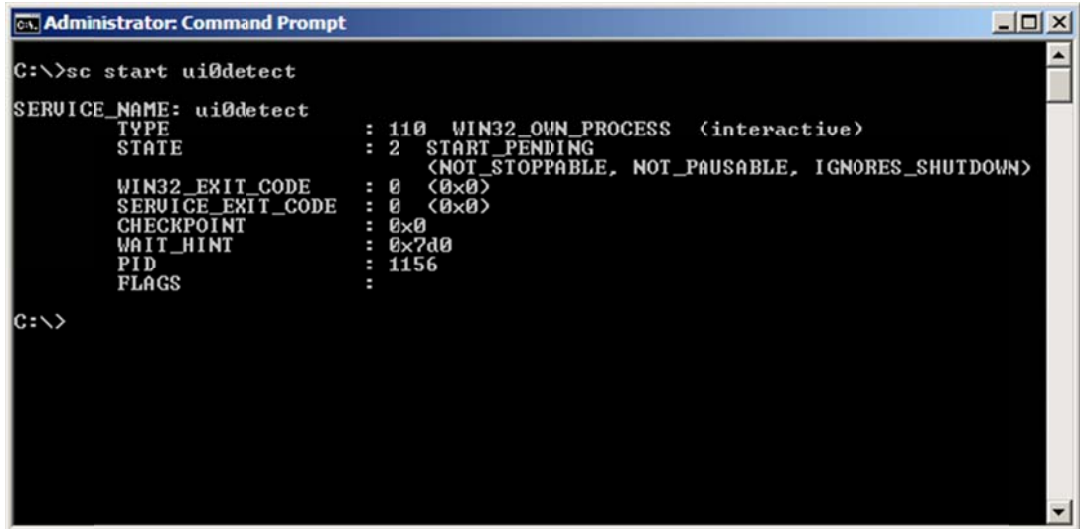


- Next, open up a Command Prompt window. At the prompt, type in the following command...

```
sc start ui0detect
```

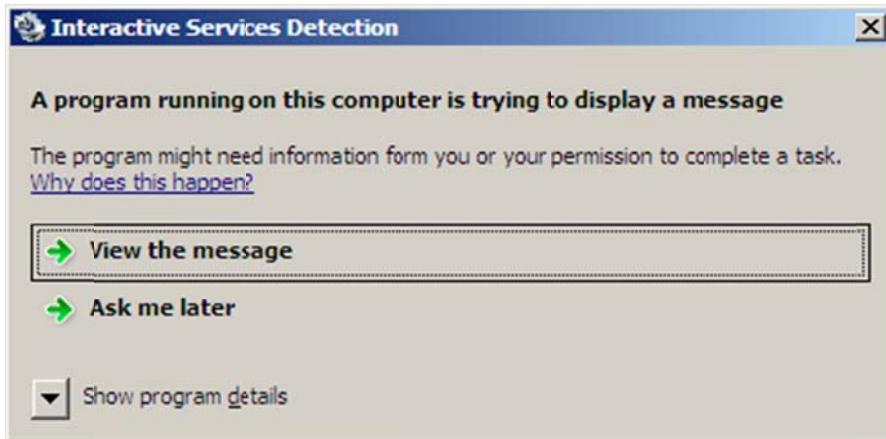
Then press **Enter**.

- Status information will then appear: the Command Prompt window should appear as follows...



```
Administrator: Command Prompt
C:\>sc start ui0detect
SERVICE_NAME: ui0detect
        TYPE               : 110  WIN32_OWN_PROCESS (interactive)
        STATE                : 2    START_PENDING
                        (NOT_STOPPABLE, NOT_PAUSABLE, IGNORES_SHUTDOWN)
        WIN32_EXIT_CODE       : 0    (0x0)
        SERVICE_EXIT_CODE   : 0    (0x0)
        CHECKPOINT           : 0x0
        WAIT_HINT            : 0x7d0
        PID                  : 1156
        FLAGS                 :
```

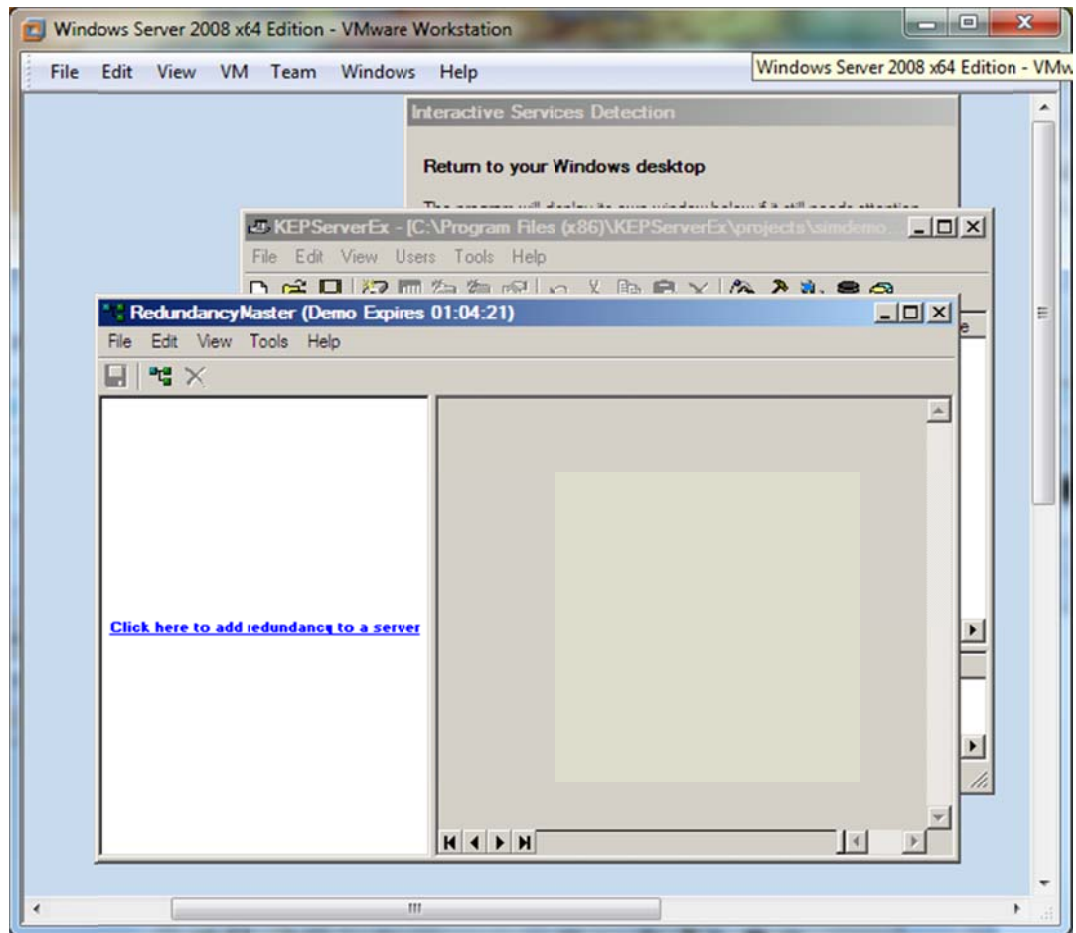
- An icon titled "Interactive Services Detection" will have appeared in the Task Bar. Click on the icon to open the pop-up dialog. In the dialog, click on **View the message**.



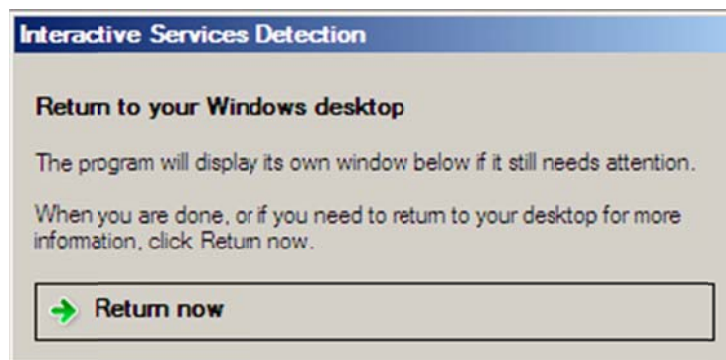
Note: If the "Interactive Services Detection" icon does not appear, enter the following command at the Command Prompt....

```
rundll32 winsta.dll,WinStationSwitchToServicesSession
```

The Session 0 window will then appear on your screen. The Session 0 window will display the UI for Redundancy Master and that of any other system service that is running.



6. It will now be possible to use the UI to perform any normal configuration operation including putting the application back into Interactive mode.
7. When done using the UI, return to the Session 1, Windows desktop by clicking on **Return Now** in the **Interactive Services Detection** dialog appearing at the top of the Session 0 window.



8. Once back to Session 1, turn off Interactive Services Detection by entering the following command at the Command Prompt...

*sc stop ui0detect*